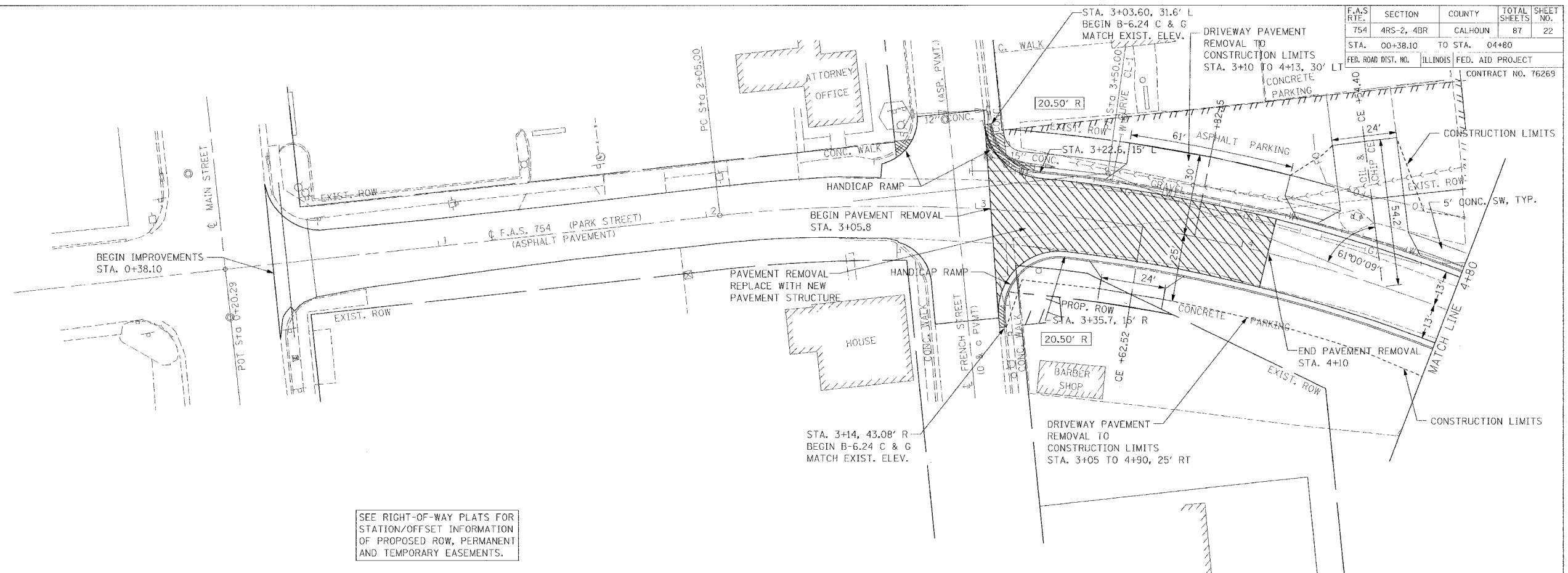


F.A.S. RTE.	SECTION	COUNTY	TOTAL SHEETS	SHEET NO.
754	4RS-2, 4BR	CALHOUN	87	22
STA. 00+38.10 TO STA. 04+80		ILLINOIS FED. AID PROJECT		
FED. ROAD DIST. NO.		CONTRACT NO. 76269		



SEE RIGHT-OF-WAY PLATS FOR STATION/OFFSET INFORMATION OF PROPOSED ROW, PERMANENT AND TEMPORARY EASEMENTS.

