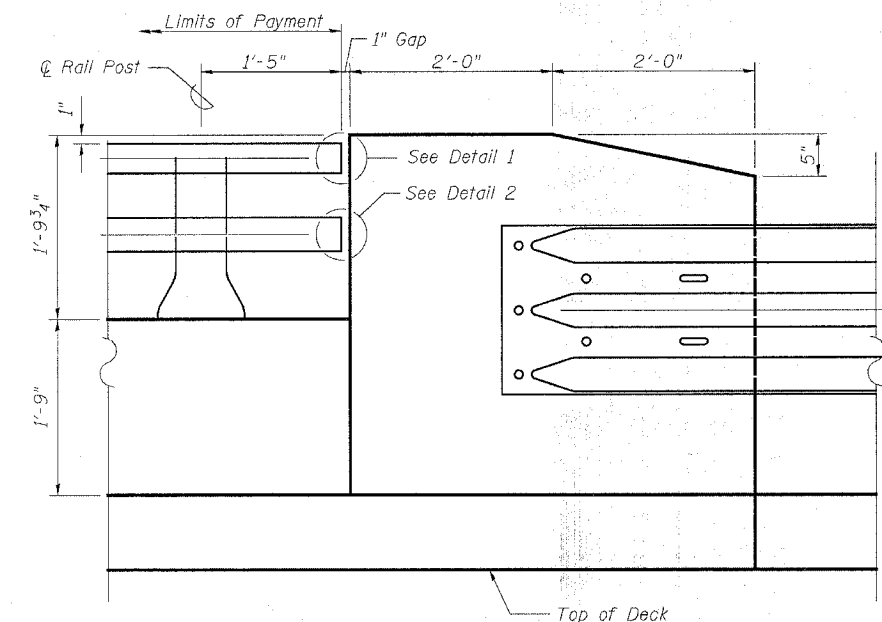
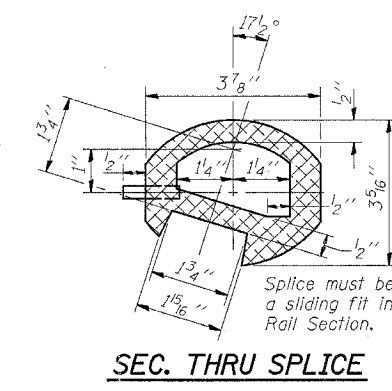
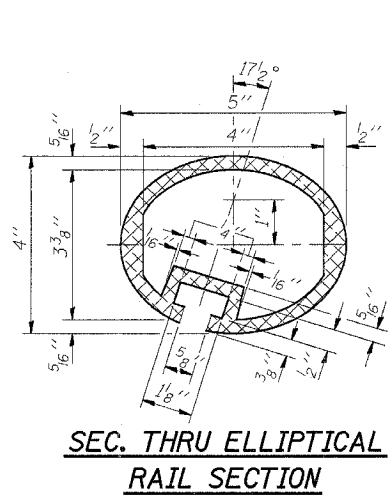
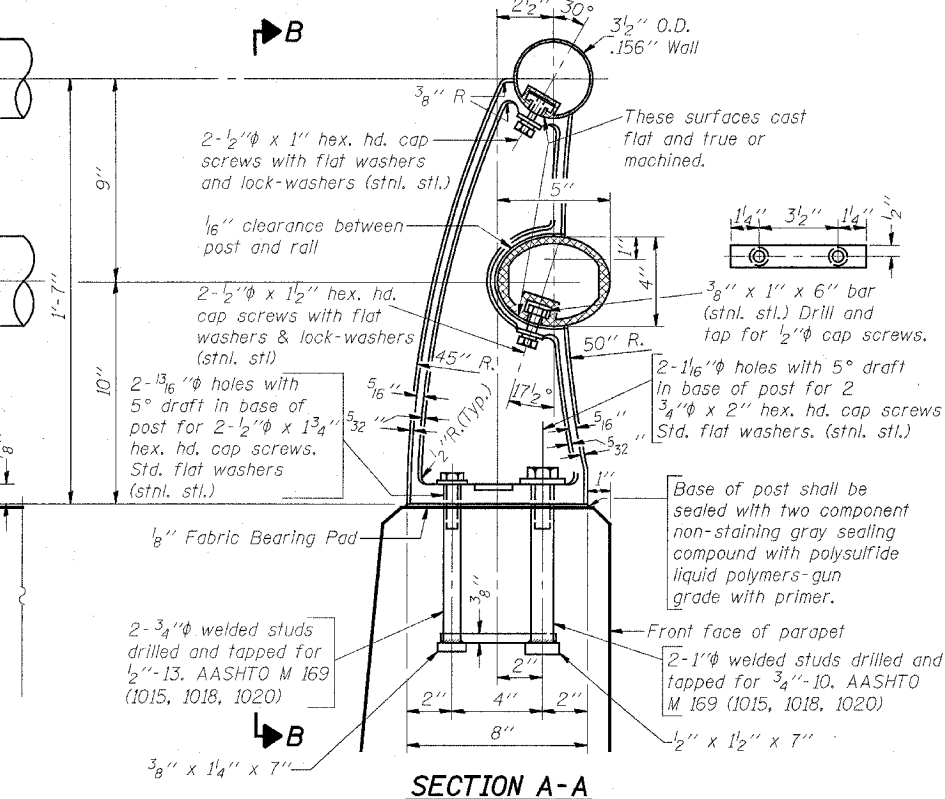
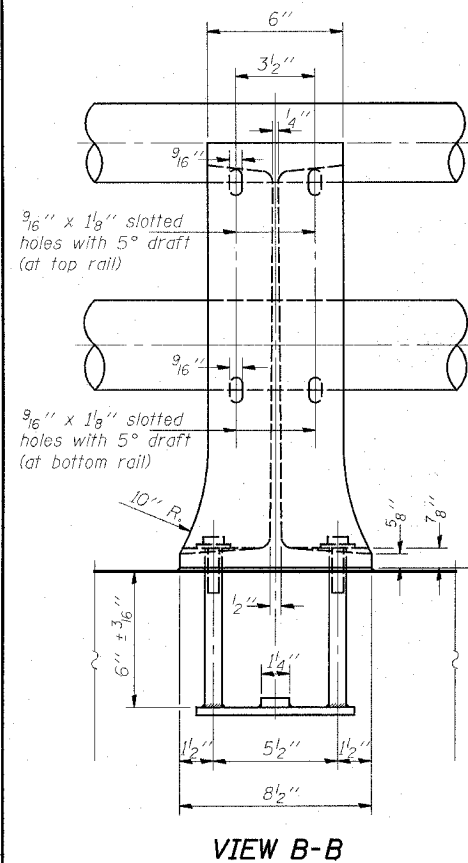
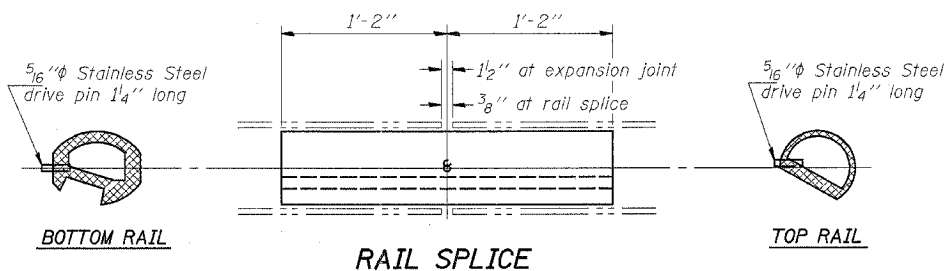
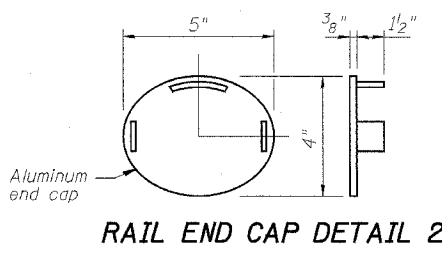
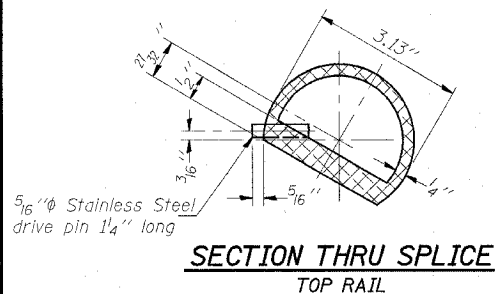
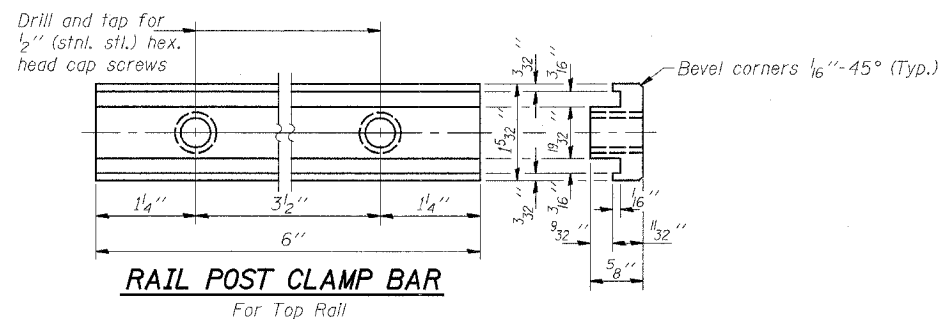
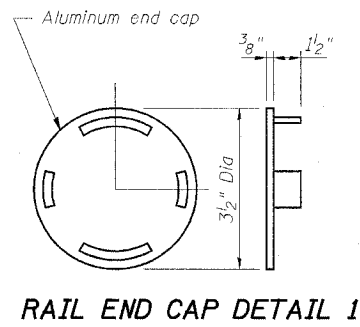
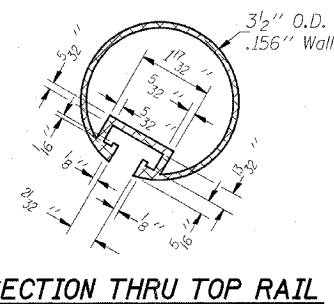


STATE OF ILLINOIS
DEPARTMENT OF TRANSPORTATION

ROUTE NO.	SECTION	COUNTY	TOTAL SHEETS	SHEET NO.	SHEET NO. 11 20 SHEETS
F.A.S. 754	4RS-2, 4BR	CALHOUN	87	45	
FED. ROAD DIST. NO. 7		ILLINOIS		FED. AID PROJECT	

CONTRACT NO. 76269

Notes: All Posts shall be normal to parapet.
All Aluminum Alloy Extruded Rail shall be supplied in modular lengths of 30 feet, except at the end of bridge or over open joints in bridge deck where the rail shall be attached to a minimum of 2 posts. If the rail is on a horizontal curve of 2300 foot radius or less, the modular lengths may be reduced but shall be attached to a minimum of 2 posts.
All joints in rail shall be spliced per detail.
Provide 1- $\frac{1}{8}$ " and 2- $\frac{1}{16}$ " Aluminum Shims for 25% of the Posts.
Rail elements shall be parallel to Grade-high spots will be ground and low spots shimmed.
Railing shall be according to Section 509 of the Standard Specifications, except as noted, and will be paid for at the contract unit price per foot for ALUMINUM RAILING, TYPE L.
Aluminum alloy rail shall conform to ASTM B 221 alloy 6061-T6 or 6351-T5 with min. yield 35 ksi, min. tensile 38 ksi, and elongation of 10% in 2 inches.
The cost of the aluminum end caps shall be included in the cost of the Type L Aluminum Railing.



ELEVATION-RAIL TERMINAL SECTION

BILL OF MATERIAL

Item	Unit	Quantity
Aluminum Railing, Type L	Foot	75

TYPE L ALUMINUM RAILING
PARK STREET OVER
AN UNNAMED CREEK
F.A.S. ROUTE 754
SECTION 4RS-2, 4BR
CALHOUN COUNTY
ROADWAY STATION 6+08.50
STRUCTURE NO. 007-0026

Benton & Associates, Inc.
Consulting Engineers / Land Surveyors
1970 West Lafayette Avenue Jacksonville, Illinois 62650
Phone : 217-245-4146 Fax : 217-245-4149
IL Design Firm Registration No. 184-000852

DESIGNED	- L.E.L.
CHECKED	- REG
DRAWN	- M.T.L.
CHECKED	- L.E.L.