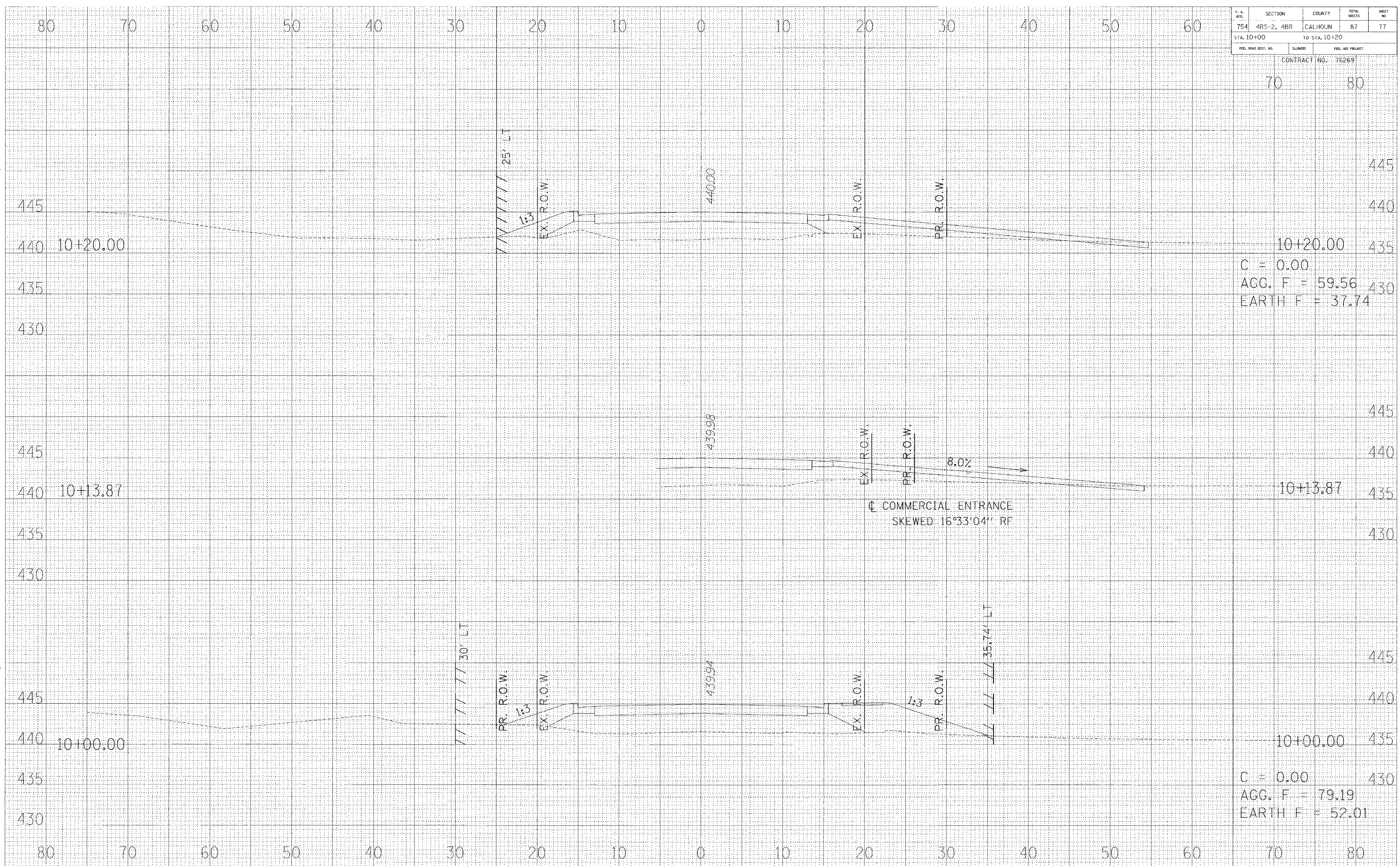


F. A. MILE	SECTION	COUNTY	TOTAL SHEETS	SHEET NO.
754	4R5-2, 4BR	CALHOUN	87	77
STA. 10+00		TO STA. 10+20		
FED. ROAD DIST. NO.	LENGTH	FED. AID PROJECT		

CONTRACT NO. 76269

70 80



445
440
435
430

10+20.00

C = 0.00
AGG. F = 59.56
EARTH F = 37.74

445
440
435
430

10+13.87

8.0%

COMMERCIAL ENTRANCE
SKEWED: 16°33'04" RF

445
440
435
430

10+00.00

C = 0.00
AGG. F = 79.19
EARTH F = 52.01