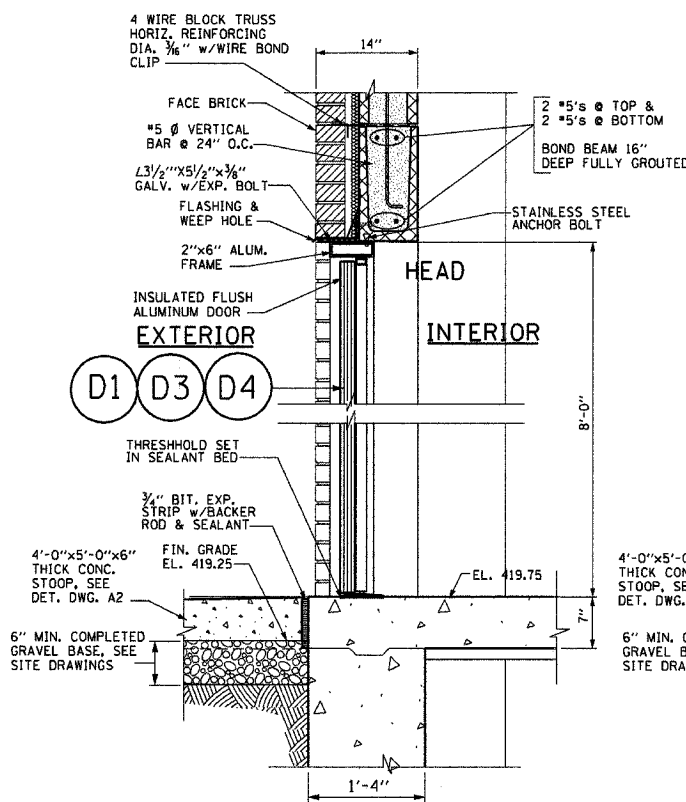
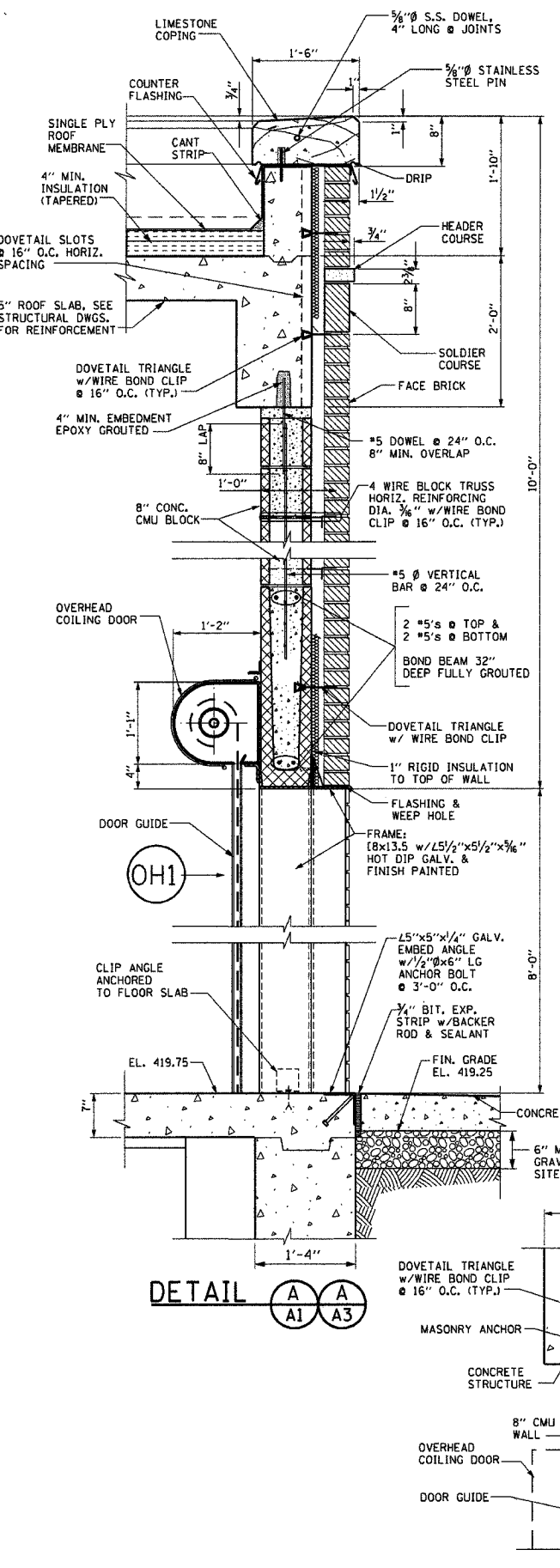
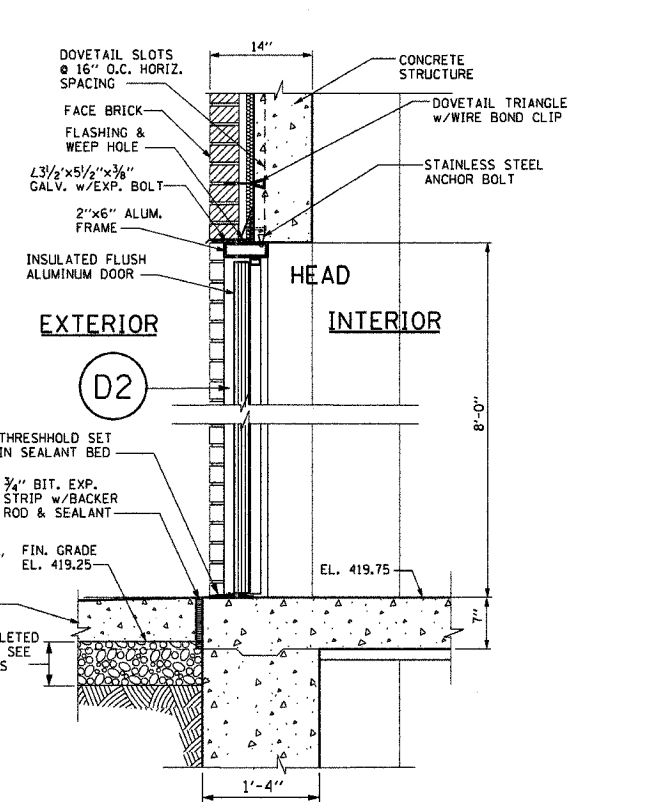


F.A.I. RTE.	SECTION	COUNTY	TOTAL SHEETS	SHEET NO.
70	82-1,217-17	ST. CLAIR	77	15
FED. ROAD DIST. NO.	ILLINOIS	FED. AID PROJECT		

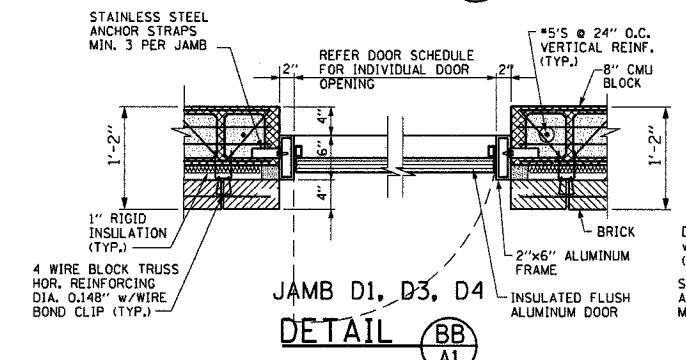
DATE  
BY  
PROJECT  
PLOTTED  
NOTE BOOK  
NO.  
NO. CHECKED  
BY  
LADD FILE NAME



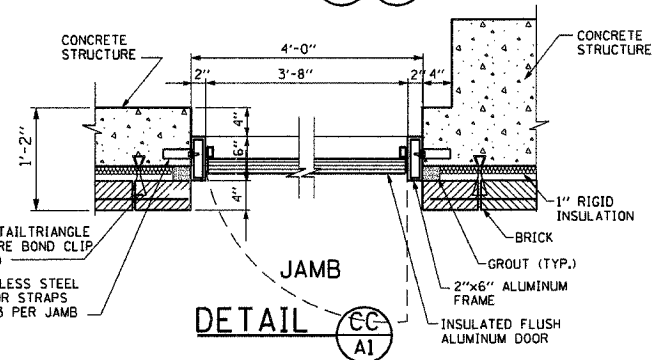
DOOR D1, D3, D4  
DETAIL B A1



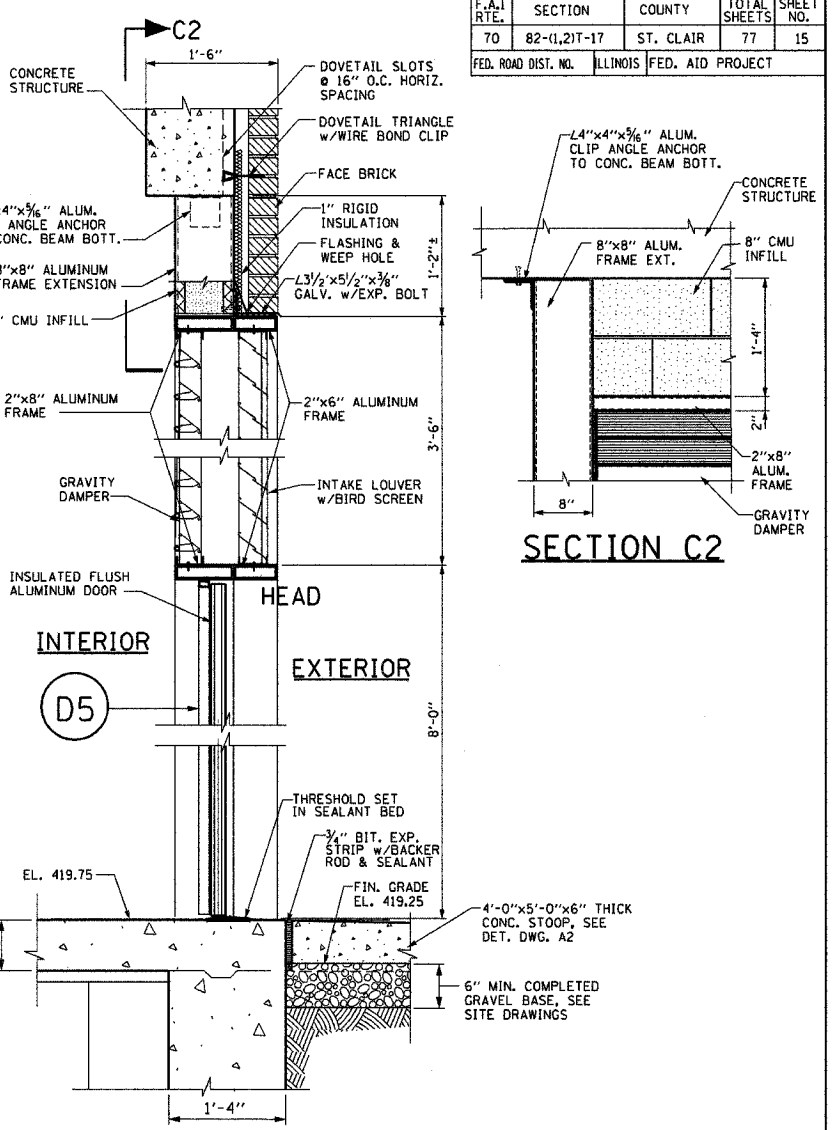
DETAIL C A1 A3



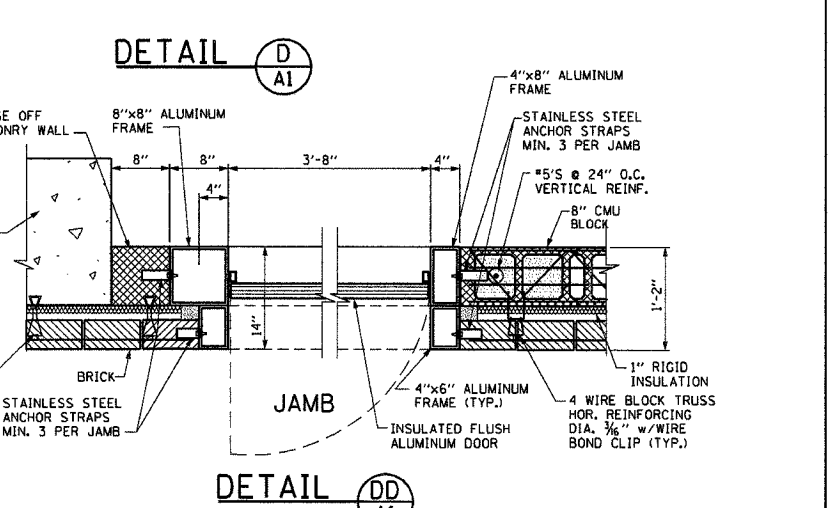
JAMB D1, D3, D4  
DETAIL BB A1



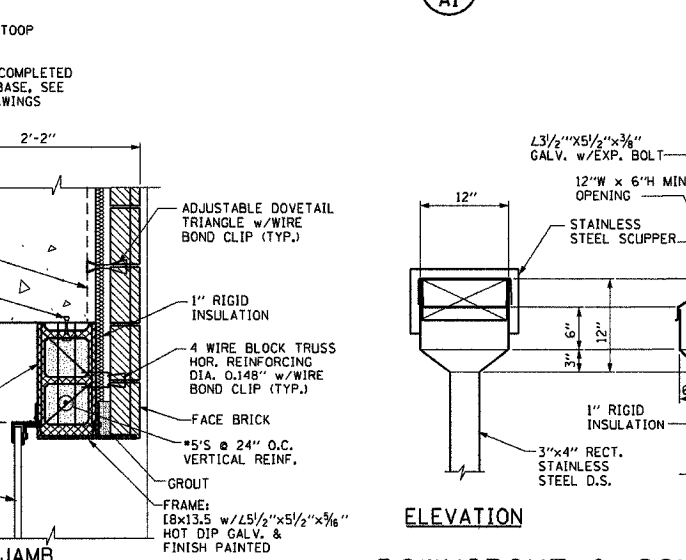
JAMB  
DETAIL CC A1



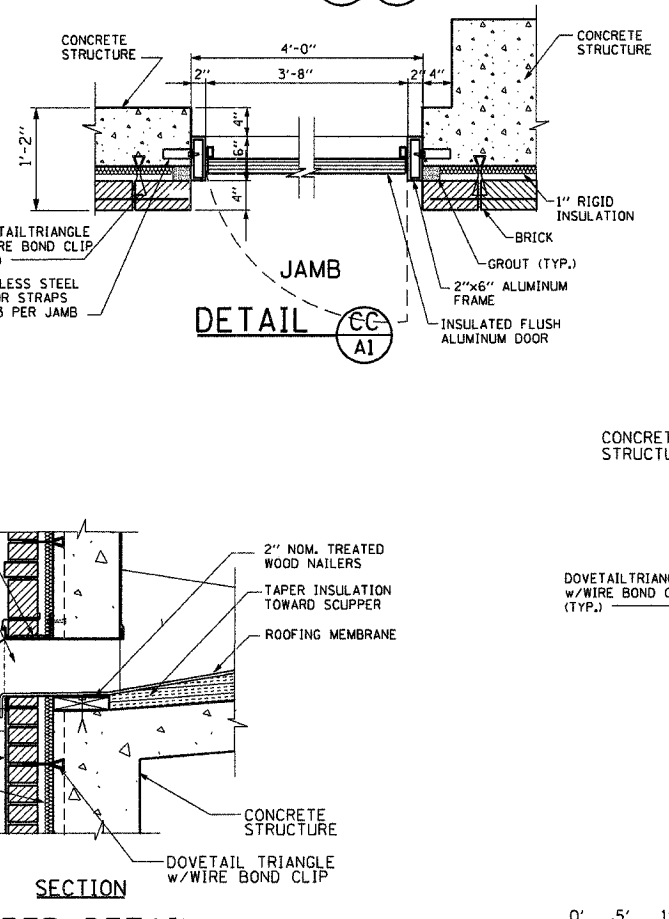
DETAIL D A1



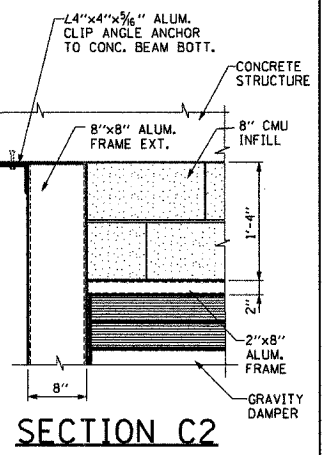
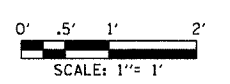
JAMB  
DETAIL DD A1



JAMB  
DETAIL AA A1



ELEVATION  
SECTION  
DOWNSPOUT & SCUPPER DETAIL



SECTION C2

**ALVORD, BURDICK & HOWSON, L.L.C.**  
ENGINEERS CHICAGO

**A5**

REVISIONS	
NAME	DATE

ILLINOIS DEPARTMENT OF TRANSPORTATION  
**BOWMAN AVENUE PUMP STATION  
REHABILITATION**  
ARCHITECTURAL DETAILS

SCALE: AS SHOWN  
DATE: 09-12-05  
DRAWN BY: CM  
CHECKED BY: MW  
PLOT DATE: DATE-TIME

SCALE: 1" = 1'  
DATE: 09-12-05  
DRAWN BY: CM  
CHECKED BY: MW