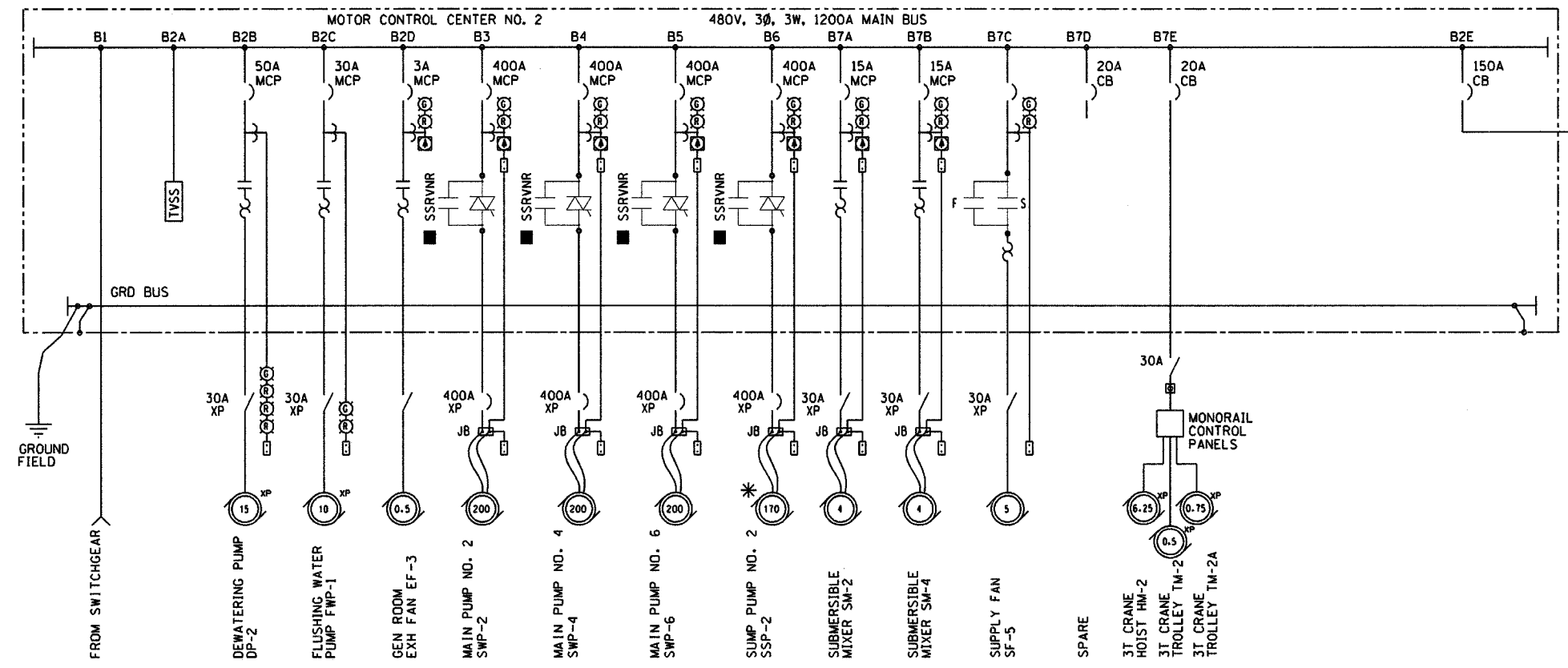
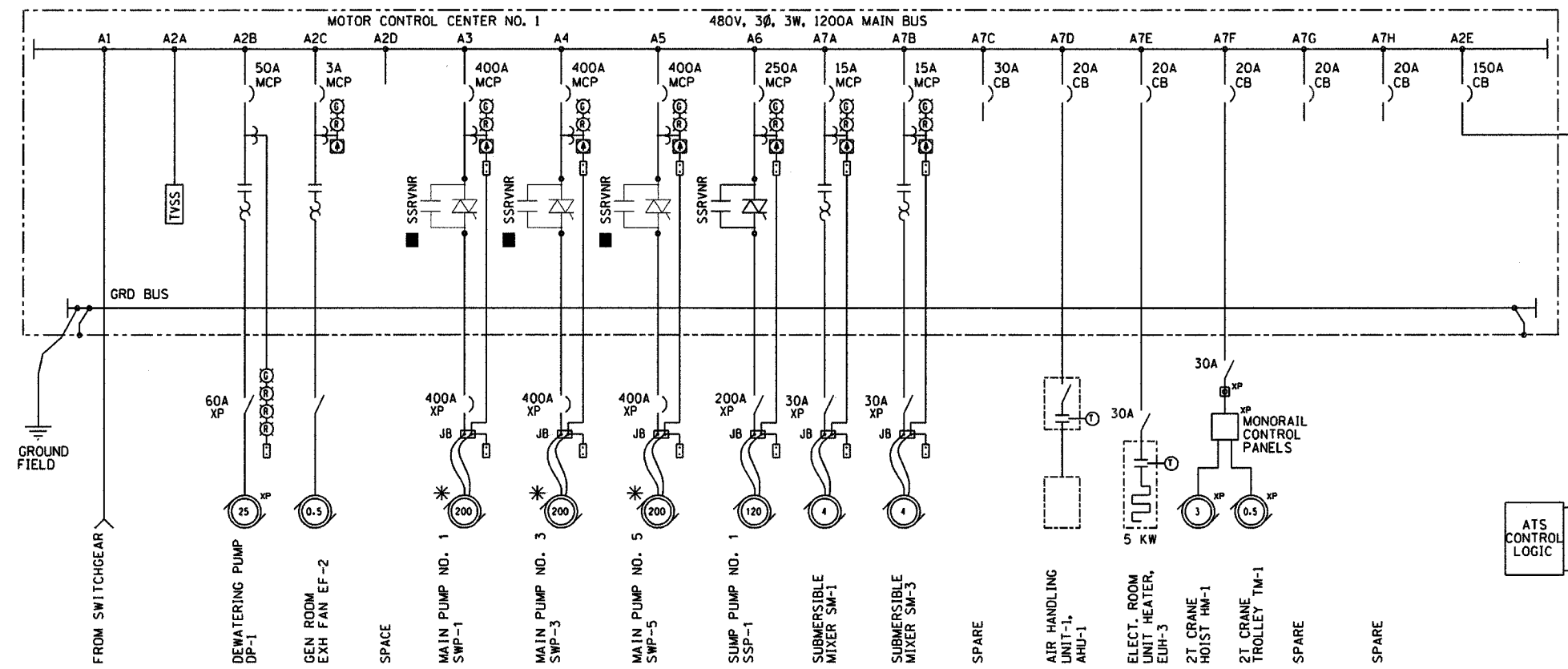


PLAN	DATE
BY	
CHECKED	
APPROVED	
NO. _____	



- - EXISTING BENSCHAW MODEL RM BG SOLID STATE STARTERS RELOCATED FROM EXISTING MOTOR CONTROL CENTERS
- * - EXISTING PUMPS & MOTORS TO REMAIN

ALVORD, BURDICK & HOWSON, L.L.C.
ENGINEERS CHICAGO

E9

REVISIONS	
NAME	DATE

ILLINOIS DEPARTMENT OF TRANSPORTATION
**BOWMAN AVENUE PUMP STATION
REHABILITATION**
MCC ONE LINE DIAGRAMS

SCALE: AS SHOWN
DATE: 09-12-05
DRAWN BY: LMJ
CHECKED BY: KCC