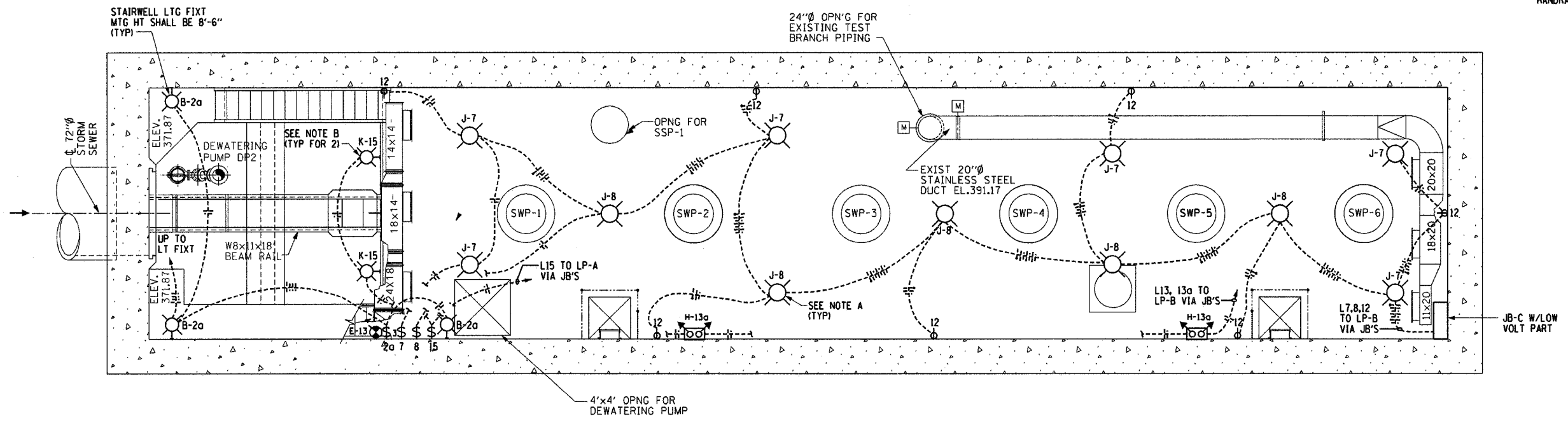


**DISCHARGE FLOOR  
PLAN @ EL. 393.7**

GENERAL NOTES:  
1. SEE GENERAL NOTES ON DWG E24

NOTES:  
A. UNLESS OTHERWISE NOTED LTG FIXTS IN DISCHARGE FLOOR & INTERMEDIATE FLOOR SHALL HAVE A 10'-0" MOUNTING HEIGHT  
B. LIGHTING FIXTURES SHALL BE MTD ADJACENT TO EXISTING HANDRAIL ON A UNISTRUT FRAMING SYSTEM



**INTERMEDIATE FLOOR  
PLAN @ EL. 380.0**

0' 2' 4' 8'  
SCALE: 1" = 4'

E25

REVISIONS	
NAME	DATE

ILLINOIS DEPARTMENT OF TRANSPORTATION  
BOWMAN AVENUE PUMP STATION  
REHABILITATION  
LIGHTING PLANS SHEET 2  
SCALE: AS SHOWN  
DATE: 09-12-05  
DRAWN BY: RRA  
CHECKED BY: KCC

**ALVORD, BURDICK & HOWSON, L.L.C.**  
ENGINEERS CHICAGO

DATE: \_\_\_\_\_  
BY: \_\_\_\_\_  
CHECKED: \_\_\_\_\_  
DATE: \_\_\_\_\_  
NOTE BOOK NO. \_\_\_\_\_  
DRAWING FILE NAME: \_\_\_\_\_

SCALE: AS SHOWN  
DATE: 09-12-05  
DRAWN BY: RRA  
CHECKED BY: KCC