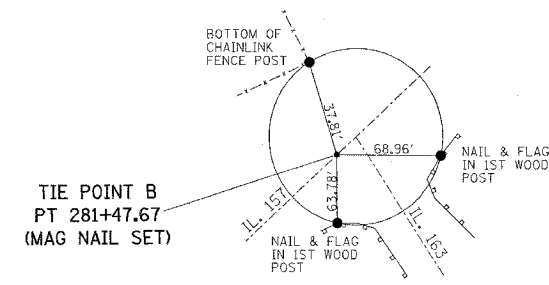
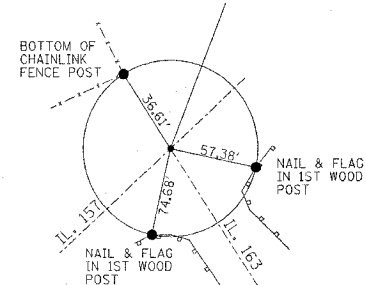


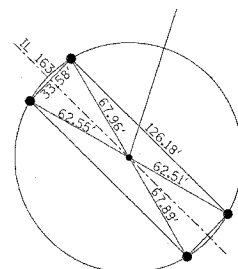
FAP ROUTE	SECTION	COUNTY	TOTAL SHEETS	SHEET NO.
609	76-1BR-1	ST. CLAIR	13	5
STA.		TO STA.		
CONTRACT NO. 76862				

PLAN	SURVEYED	DATE
NOTE BOOK	ALIGNMENT CHECKED	BY
NO.	PLANS CHECKED	
	FILED	
	FILE NAME	

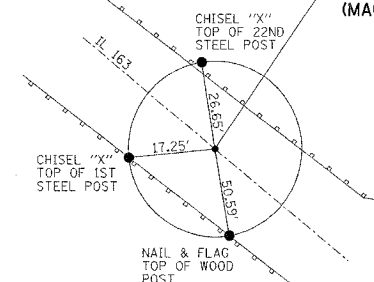
TIE POINT A
STA. 281+63.20 IL 157
STA. 9+80.08 IL 163
(MAG NAIL SET)



CHISEL "X"
CENTER OF
BRIDGE
STA. 11+18.44



TIE POINT
POT STA 17+80.00
(MAG NAIL SET)



RESURFACING SCHEDULE

LOCATION	BITUMINOUS CONCRETE SURFACE COARSE, SUPERPAVE MIX "C", N70	BITUMINOUS MATERIALS (PRIME COAT)	LEVELING BINDER SUPERPAVE, IL-19.0 N70
	TON	TON	TON
STA. 10+09.68 TO STA. 10+55.03	6	0.1	6
STA. 11+82.45 TO STA. 12+99.45	14	0.1	14
TOTALS	20	0.2	20

REVISIONS	
NAME	DATE

ILLINOIS DEPARTMENT OF TRANSPORTATION
**TIE POINTS &
SCHEDULE**
FAP ROUTE 609 (IL ROUTE 163)
SECTION 76-1BR-2
ST. CLAIR COUNTY

DRAWN BY:

PLOT DATE: *DATE-TIME*

DATE-TIME
DATE-TIME
DATE-TIME
DATE-TIME