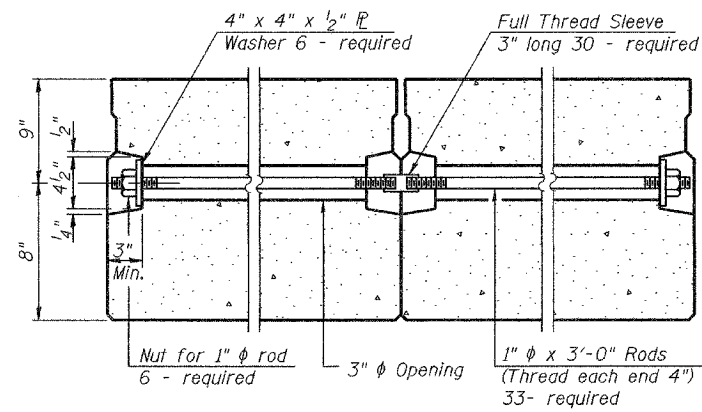
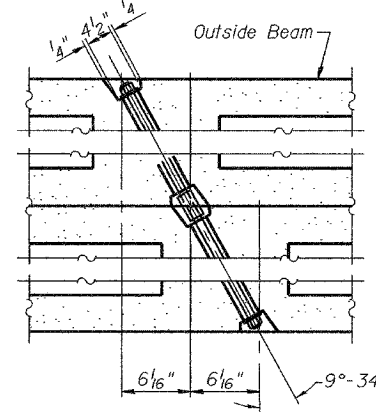
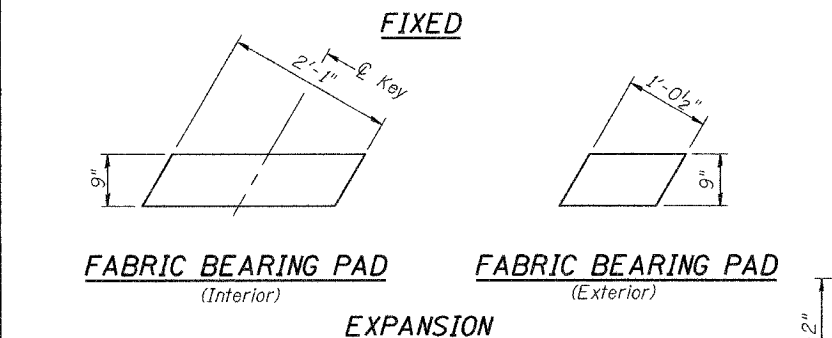
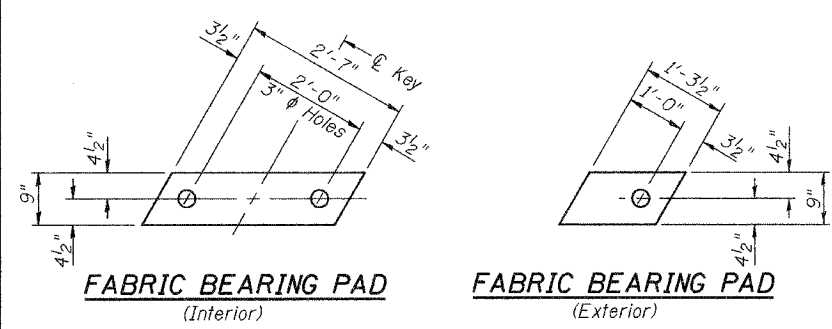


STATE OF ILLINOIS
DEPARTMENT OF TRANSPORTATION

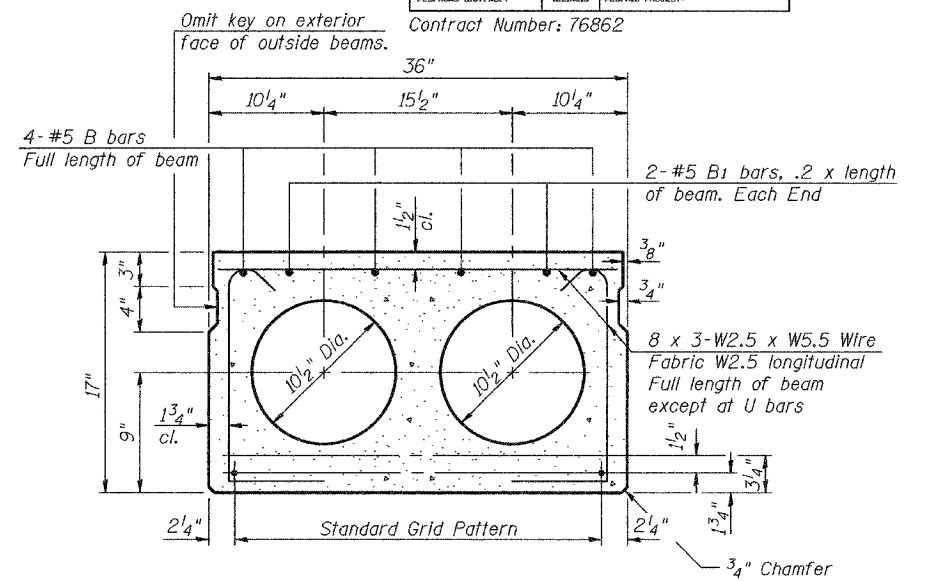
ROUTE NO.	SECTION	COUNTY	TOTAL SHEETS	SHEET NO.
		St. Clair	11	11
FED. ROAD DIST. NO. 7		BLANKET	FED. AID PROJECT	

SHEET NO. 3
5 SHEETS

Contract Number: 76862

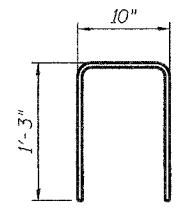
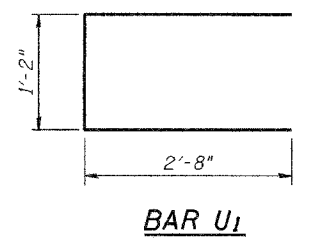


TYPICAL TRANSVERSE TIE ASSEMBLY

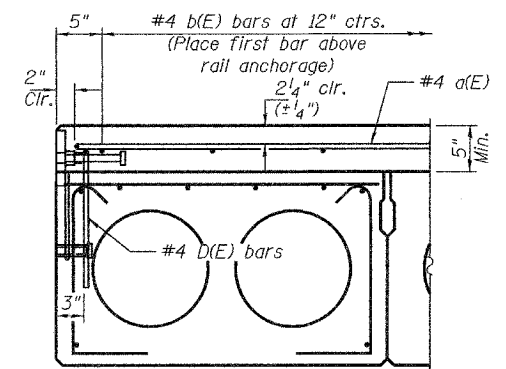


TYPICAL SECTION

1/2" ϕ Strands, Each Strand Stressed to 30,900 Lbs.
9-Strands 1 3/4" up, 4-Strands 3/4" up, 2-Strands 12" up
Note: Place strands symmetrically about ϕ of beam.

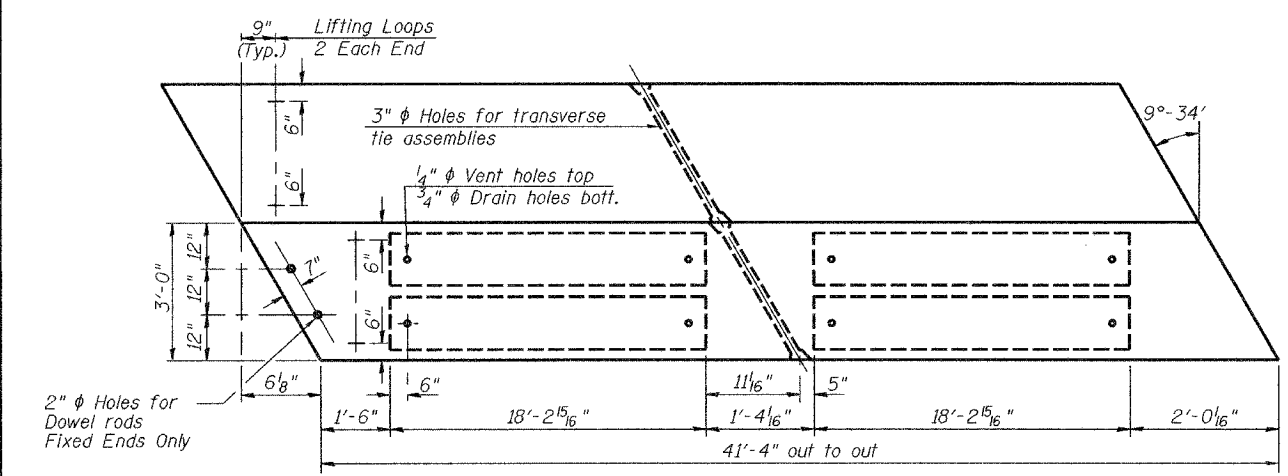


BAR D(E)

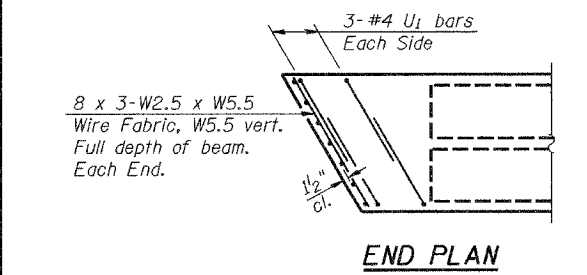


TYPICAL SECTION AT FASCIA BEAM

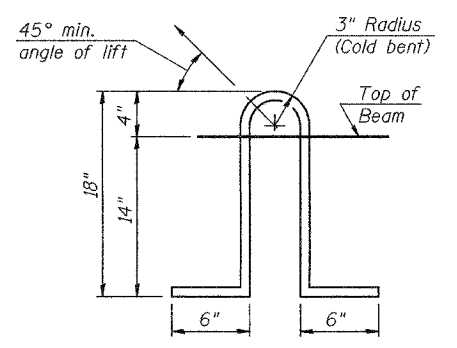
See section thru Interior Beams for strand pattern, dimensions and bar call outs.
Bridge rail inserts shall be cast in precast beams.



PLAN



END PLAN



LIFTING LOOP DETAIL

NOTES

Prestressing steel shall be uncoated high strength, low relaxation 7-wire strand, Grade 270. The nominal diameter shall be 1/2" and the nominal cross-sectional area shall be 0.153 sq. in. Lifting loops shall be 2-1/2" ϕ -270 ksi strands, as shown. The 1" ϕ rods in the transverse tie assembly shall be tightened to a snug fit and the threads set. Pockets that receive transverse tie bar on outside shall be filled with grout after transverse tie assembly is in place. Non prestressing steel shall conform to AASHTO M-31 or M-322 Grade 60. The bearing seat surfaces shall be adjusted by shimming to assure firm and even bearing. Two 1/8" fabric adjusting shims of the dimensions of the Exterior Bearing Pad shall be provided for each bearing. Keyway surfaces shall be cleaned to remove form oil or other bond breaking material prior to shipment of the beams. Cleaning shall be done by sandblasting the keyway areas between top of the beam and the bottom edge of the key. Corrosion Inhibitor, as covered in the Special Provisions, shall be used in the concrete for precast prestressed concrete deck beams. Required Release Strength, f'ci, shall be 4000 p.s.i.

BILL OF MATERIAL

Bar	No.	Size	Length	Shape
Precast Prestressed Conc. Deck Bms. (17")	Sq. Ft.		4,092	

BEAM DETAILS
F.A.P. RT. 609
ST. CLAIR COUNTY
SN 082-0213

DESIGNED	P.S.J.
CHECKED	A.T.H.
DRAWN	Drew Christopher
CHECKED	P.S.J. A.T.H.

September 20, 2005
EXAMINED John A. Morris ENGINEER OF STRUCTURAL SERVICES
PASSED Ralph E. Anderson ENGINEER OF BRIDGES AND STRUCTURES