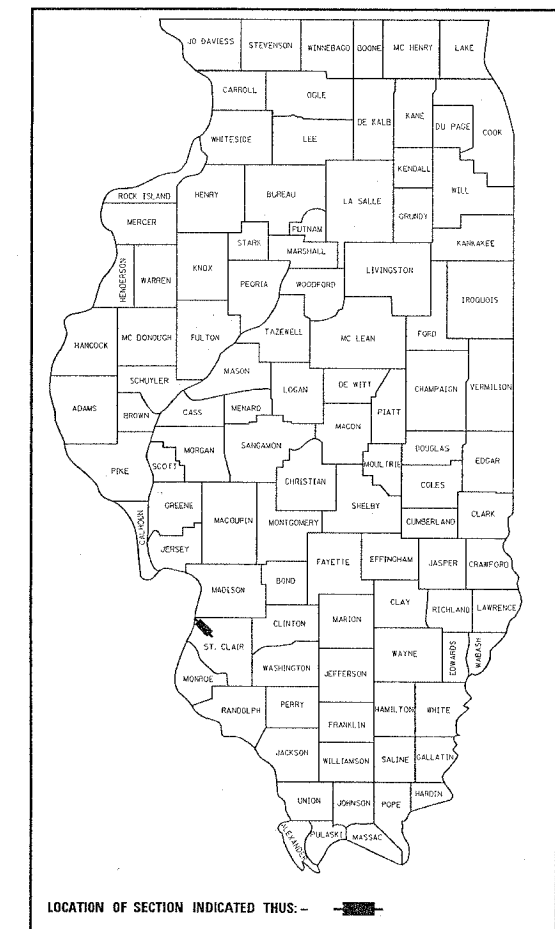


76889

FAP ROUTE	SECTION	COUNTY	TOTAL SHEETS	SHEET NO.
*	**	ST. CLAIR	8	1

- VARIOUS
- DIST 8 DEEP WELLS 2005-2

D-98-027-05



STATE OF ILLINOIS
DEPARTMENT OF TRANSPORTATION
DIVISION OF HIGHWAYS

**PROPOSED
HIGHWAY PLANS**

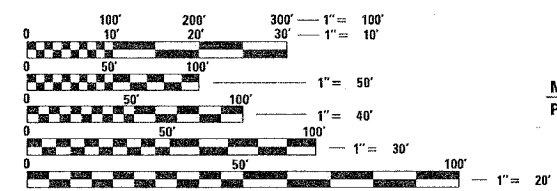
**VARIOUS ROUTES (MISSOURI AVE. PUMP STATION)
SECTION DIST 8 DEEP WELLS 2005-2**

**PROJECT: --
ST. CLAIR COUNTY
DEEP WELL INSTALLATION
C-98-047-05**

FOR INDEX OF SHEETS, SEE SHEET NO. 2

PROJECT ENGINEER: WENDA SOUTHERLAND (618) 346-3159
SQUAD LEADER: GREG HANCOCK (618) 346-3195

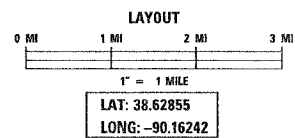
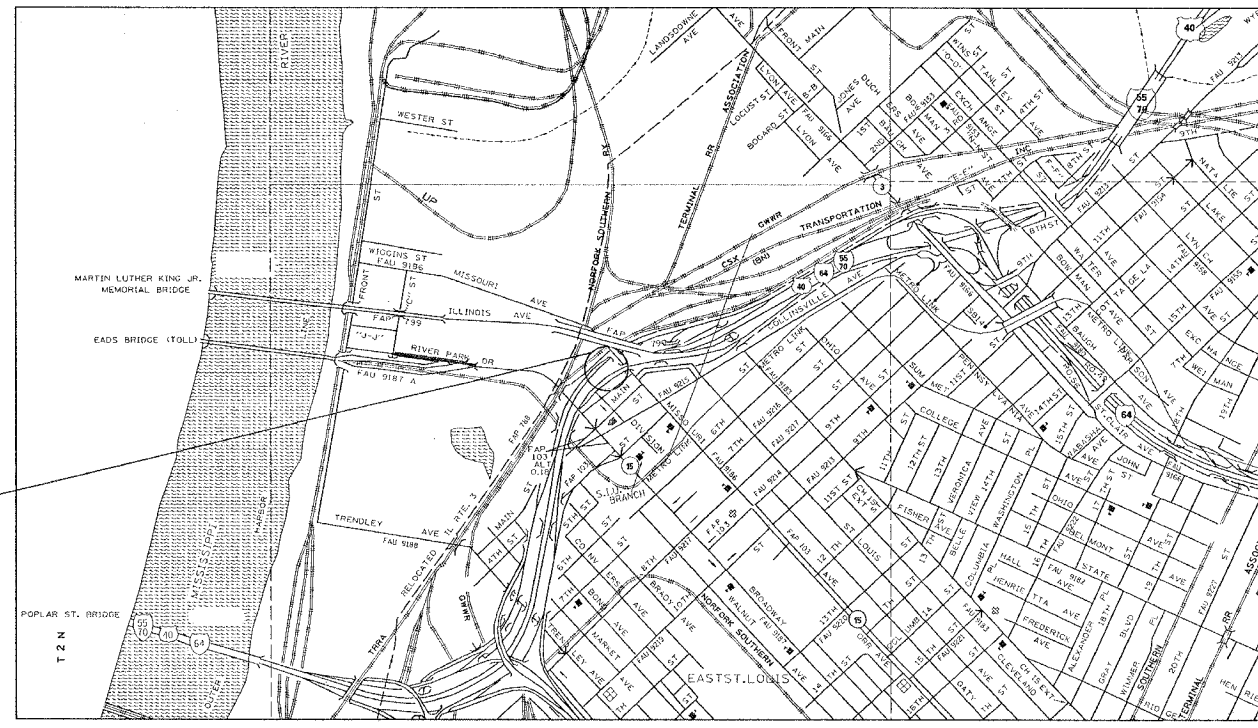
MICROFILMED _____
REEL NUMBER _____
AWARDED _____
RESIDENT ENGINEER _____
AS BUILT CHANGES WERE MADE
ON THE FOLLOWING SHEETS



FULL SIZE PLANS HAVE BEEN PREPARED USING STANDARD
ENGINEERING SCALES. REDUCED SIZED PLANS WILL NOT
CONFORM TO STANDARD SCALES. IN MAKING MEASUREMENTS
ON REDUCED PLANS, THE ABOVE SCALES MAY BE USED.

J.U.L.I.E.
JOINT UTILITY LOCATION INFORMATION FOR EXCAVATION
1-800-892-0123

CONTRACT NO. 76889



STATE OF ILLINOIS
DEPARTMENT OF TRANSPORTATION
DIVISION OF HIGHWAYS

SUBMITTED March 31 2005
Mary C. Lami
DEPUTY DIRECTOR OF HIGHWAYS
REGION FIVE ENGINEER

May 13 2005
Mike Hine
ENGINEER OF DESIGN AND ENVIRONMENT

May 30 2005
Victor Madorsky
DIRECTOR, DIVISION OF HIGHWAYS

**PRINTED BY THE AUTHORITY
OF THE STATE OF ILLINOIS**

F&P ROUTE	SECTION	COUNTY	TOTAL SHEETS	SHEET NO.
#	**	ST. CLAIR	8	2
STA.		TO STA.		
CONTRACT NO.: 76889				

* VARIOUS
 ** DIST 8 DEEP WELLS 2005-2

INDEX OF SHEETS

- 1 COVER SHEET
- 2 INDEX OF SHEETS, HIGHWAY STANDARDS, AND GENERAL NOTES
- 3 SUMMARY OF QUANTITIES
- 4 SITE PLAN MISSOURI WELLS
- 5 SITE PLAN (MAGNIFIED) AND DETAILS
- 6-7 TYPICAL WELL DETAILS
- 8 SOIL BORING LOGS

GENERAL NOTES

1. THE STANDARDS AND REVISION NUMBERS LISTED SHALL APPLY TO THIS PROJECT.
2. ILLINOIS STATE LAW REQUIRES A 48-HOUR NOTICE BE GIVEN TO UTILITIES BEFORE DIGGING. FIELD MARKING OF FACILITIES MAY BE OBTAINED BY CONTACTING J.U.L.I.E. OR FOR NON-MEMBERS, THE UTILITY COMPANY DIRECTLY. AGENCIES KNOWN TO HAVE FACILITIES WITHIN THE PROJECT AREA ARE AS FOLLOWS:
 - * AMERENIP (GAS)
 - * AMEREN-UE (ELECTRIC)
 - * CHARTER COMMUNICATIONS, INC. (CABLE TV)
 - * ILLINOIS AMERICAN WATER CO. (WATER)
 - * LACLEDE PIPELINE CORP. (GAS TRANSMISSION)
 - * MCI NETWORK SERVICES, INC. (COMMUNICATIONS)
 - * MCLEOD USA TELECOMMUNICATIONS, INC. (COMMUNICATIONS)
 - * NETWORKS, 360 (COMMUNICATIONS)
 - * QWEST COMMUNICATIONS (COMMUNICATIONS)
 - * SBC (COMMUNICATIONS)
 - * SPRINT COMMUNICATIONS CO. (COMMUNICATIONS)
- (MEMBERS OF J.U.L.I.E. (800) 892-0123 ARE INDICATED BY *. NON-J.U.L.I.E. MEMBERS MUST BE NOTIFIED INDIVIDUALLY.)
3. THE RESIDENT ENGINEER SHALL LOCATE AND MARK THE EXACT LOCATIONS FOR ALL PROPOSED ITEMS PRIOR TO INSTALLATION BY THE CONTRACTOR.
4. WHERE SECTION OR SUB-SECTION MONUMENTS ARE ENCOUNTERED THE ENGINEER SHALL BE NOTIFIED BEFORE SUCH MONUMENTS ARE DISTURBED. THE CONTRACTOR SHALL PROTECT AND CAREFULLY PRESERVE ALL PROPERTY MARKERS AND MONUMENTS UNTIL THE OWNER, AN AUTHORIZED SURVEYOR OR AGENT HAS WITNESSED OR OTHERWISE REFERENCED THE LOCATION.
5. EXCEPT WHERE DESIGNATED OTHERWISE, THE LOCATIONS AND/OR DEPTHS OF UNDERGROUND UTILITIES SHOWN HAVE BEEN TAKEN FROM OFFICE RECORD INFORMATION FURNISHED BY THE UTILITY OWNERS AND MUST BE CONSIDERED APPROXIMATE.
6. THE CONTRACTOR SHALL VERIFY ALL DIMENSIONS AND CONDITIONS IN THE FIELD PRIOR TO CONSTRUCTION AND ORDERING OF MATERIALS.
7. FOR EXACT SITE LOCATION CONTACT DAVE WALKER AT THE ILLINOIS DEPARTMENT OF TRANSPORTATION (618) 346-3274.

PLAN	SURVEYED	DATE
NOTE BOOK	PLOTTED	BY
NO.	PL. OF	
	FILE	
	NAME	

HIGHWAY STANDARDS

701301-02
 702001-05
 814001
 000001-04
 001006

COMMITMENTS

NONE

REVISIONS	
NAME	DATE

ILLINOIS DEPARTMENT OF TRANSPORTATION
**INDEX OF SHEETS, HIGHWAY
 STANDARDS AND GENERAL NOTES**
 VARIOUS ROUTES
 SECTION DIST 8 DEEP WELLS 2005-2
 ST. CLAIR COUNTY

DRAWN BY:

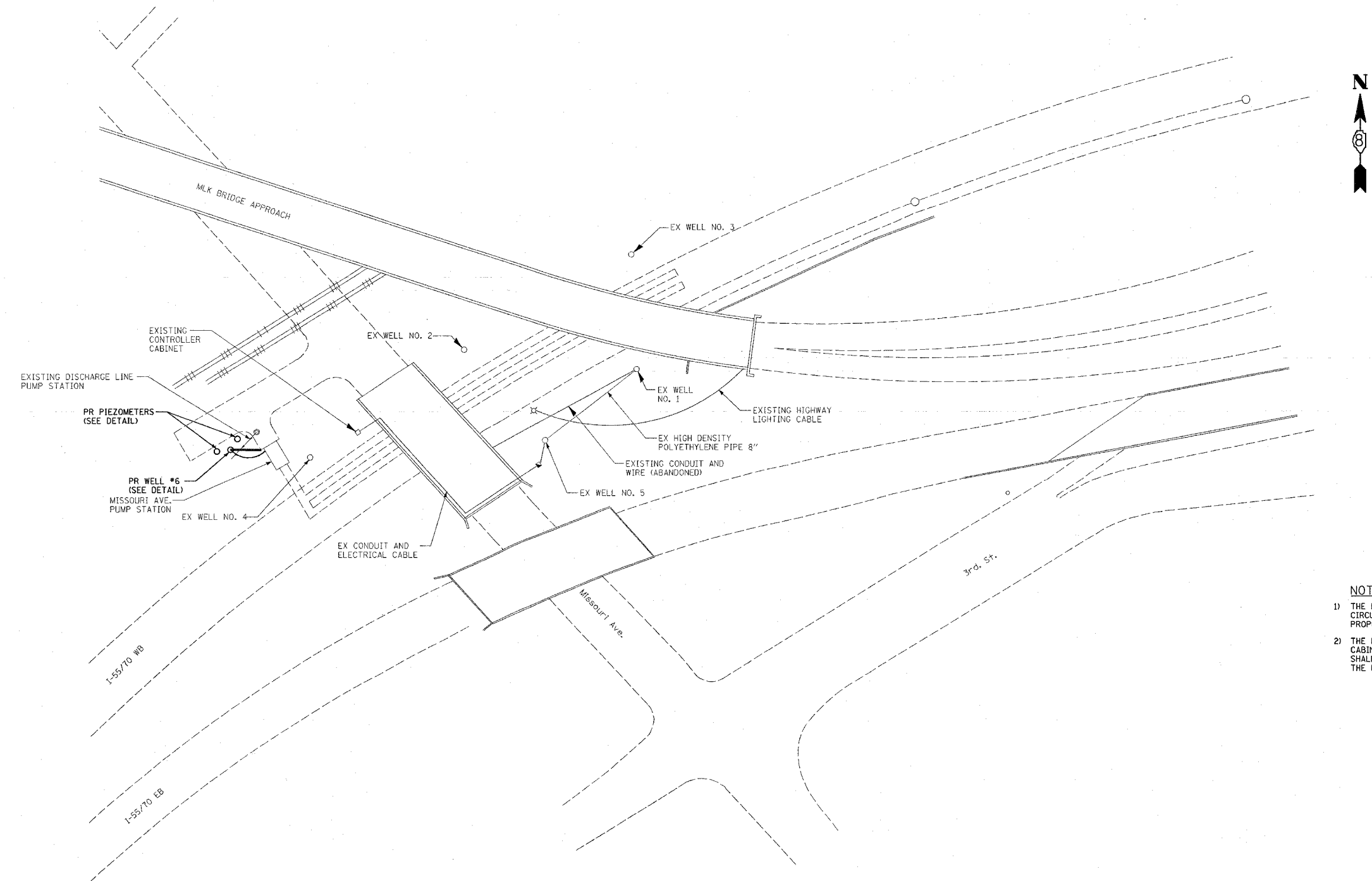
PLOT DATE: 3/31/2005

3/31/2005
 on:\projects\05\plans\plan\02705.dgn
 -REF-

FAP ROUTE	SECTION	COUNTY	TOTAL SHEETS	SHEET NO
*	**	ST. CLAIR	8	4
STA. TO STA.				
CONTRACT NO.: 76889				

- * VARIOUS
- ** DIST 8 DEEP WELLS 2005-2

PLAN	DATE
SURVEYED	BY
ALIGNED	CHECKED
NOTE BOOK	NO.
CADD FILE NAME	



NOTES

- 1) THE ENGINEER SHALL IDENTIFY SOURCE OF EXISTING ELECTRICAL CIRCUIT FOR SHUT OFF PRIOR TO THE CONNECTION OF THE PROPOSED CIRCUIT.
- 2) THE PROPOSED CONNECTION THE EXISTING CONTROLLER CABINET AND PROPOSED STAINLESS STEEL WELL HEAD SHALL BE APPROVED BY THE ENGINEER AND INCLUDED IN THE PRICE OF ELECTRICAL CABLE IN CONDUIT.

REVISIONS	
NAME	DATE

ILLINOIS DEPARTMENT OF TRANSPORTATION
SITE PLAN
MISSOURI WELLS
 VARIOUS ROUTES
 SECTION DIST 8 DEEP WELLS 2005-2
 ST. CLAIR COUNTY

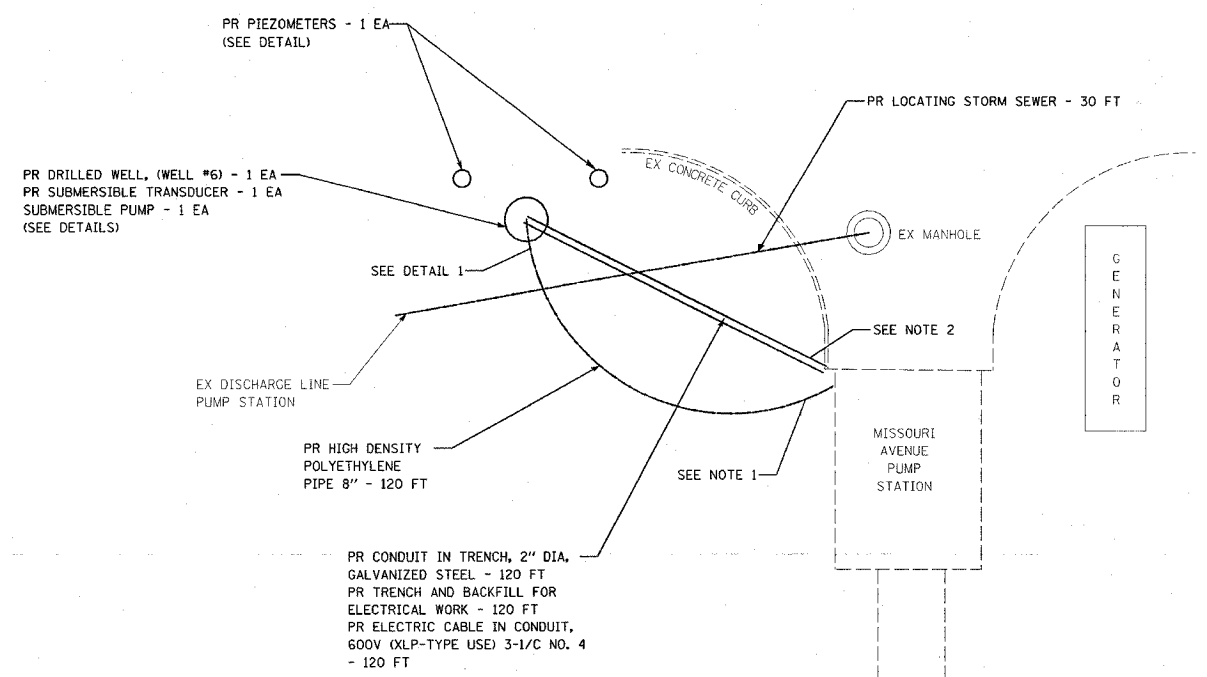
DRAWN BY:

PLOT DATE: 3/31/2005

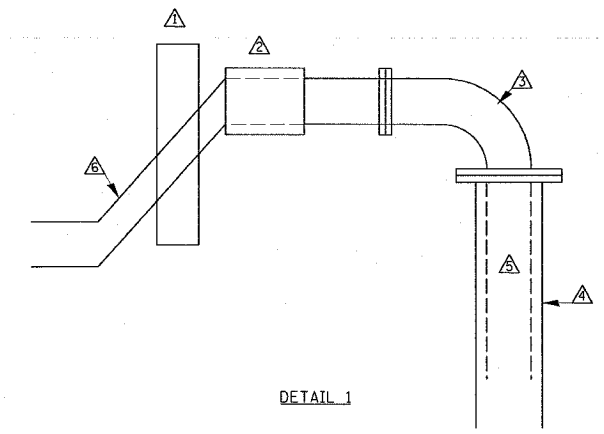
#D:\IT&S
 3/31/2005
 c:\pro\p\cta\ed02705\plan\plan02705.dgn
 *REF-
 *REF-

FAP ROUTE	SECTION	COUNTY	TOTAL SHEETS	SHEET NO.
	**	ST. CLAIR	8	5
STA.	TO STA.			
CONTRACT NO.: 76889				

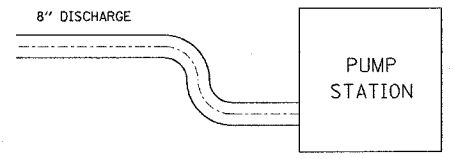
- * VARIOUS
- ** DIST 8 DEEP WELLS 2005-2



- △ CONCRETE THRUST BLOCK
- △ SS COUPLING
- △ SS 90° ELBOW
- △ SS WELL CASTING
- △ SS FLANGE COLUMN PIPE
- △ HDPE FORCE MAIN



NOTE 1



CORE DRILL HOLE THRU WALL INTO PUMP STATION DISCHARGE. INSTALL NON-SHRINK GROUT AROUND PIPE. COST WILL BE CONSIDERED AS INCLUDED IN THE INSTALLATION OF THE HDPE PIPE AND NO ADDITIONAL COMPENSATION ALLOWED.

NOTE 2

INSTALL PROPOSED 2" CONDUIT IN GROUND AND ATTACHED TO EXISTING 2" CONDUIT ON SIDE OF PUMP STATION.

PLAN	DATE
SUBMITTED	BY
PLOTTED	
ALIGNED	
REVISIONS CHECKED	
CAD FILE NAME	
NO.	

8401E88
3/31/2005
c:\projects\482705\plan\plan02705.dgn
REF

REVISIONS	
NAME	DATE

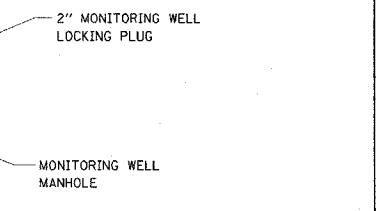
ILLINOIS DEPARTMENT OF TRANSPORTATION
**SITE PLAN (MAGNIFIED)
AND DETAILS**
VARIOUS ROUTES
SECTION DIST 8 DEEP WELLS 2005-2
ST. CLAIR COUNTY

DRAWN BY:

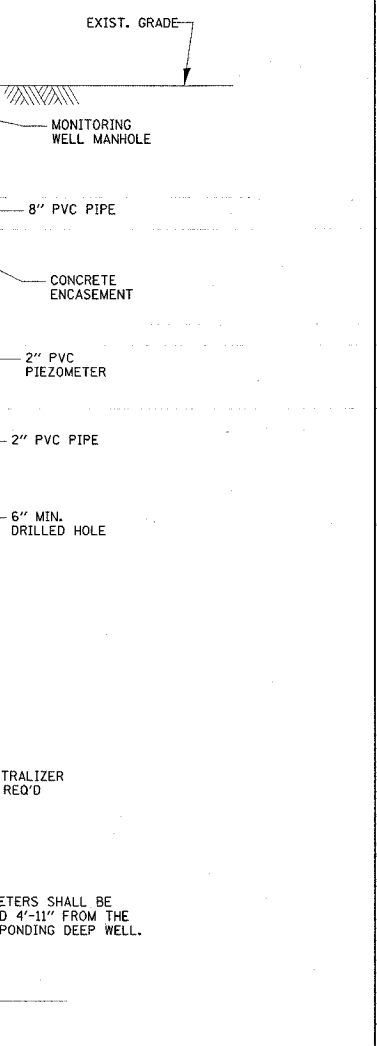
PLOT DATE: 3/31/2005

FAP ROUTE	SECTION	COUNTY	TOTAL SHEETS	SHEET NO.
**	**	ST. CLAIR	8	6
STA. TO STA.				
CONTRACT NO.: 76889				

* VARIOUS
** DIST 8 DEEP WELLS 2005-2



PLAN



PROFILE
DETAIL OF NEW PIEZOMETER
N.T.S.

ILLINOIS DEPARTMENT OF TRANSPORTATION
TYPICAL WELL DETAILS

VARIOUS ROUTES
SECTION DIST 8 DEEP WELLS 2005-2
ST. CLAIR COUNTY

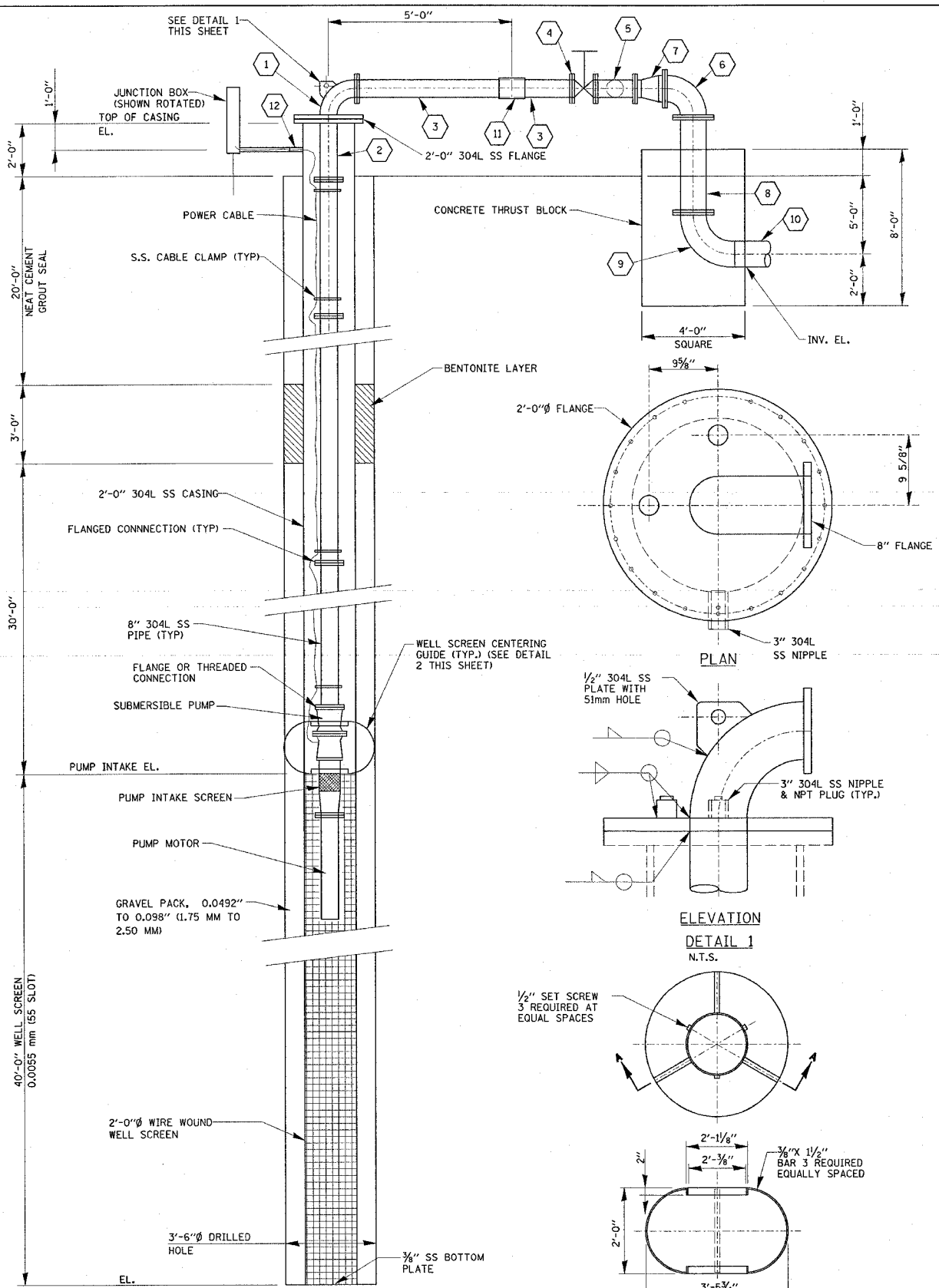
DRAWN BY:

PLOT DATE: 3/31/2005

REVISIONS	
NAME	DATE

- LEGEND**
- 1 8" 304 L SS 90° ELBOW W/2'-0" FLANGE AND 8" FLANGE
 - 2 8" 304 L SS PIPE FLANGE x PE. WELD PE TO 2'-0" FLANGE FOR ITEM 1
 - 3 8" 304 L SS PIPE, FLANGE x PE
 - 4 8" KNIFE GATE VALVE.
 - 5 8" 304 L SS TEE, FLANGE
 - 6 1'-0" 304 L SS 90° ELBOW FLANGED.
 - 7 8"x1'-0" 304 L SS REDUCER, FLANGED
 - 8 1'-0" 304 L SS PIPE, FLANGED
 - 9 1'-0" SDR 17 HDPE 90° ELBOW, FLANGE x PE
 - 10 1'-0" SDR 17 HDPE PIPE
 - 11 SS COUPLING, 8"x1'-0 1/2"
 - 12 3" 304 L SS NIPPLE, WELD TO CASING (SHOWN ROTATED) ORIENT PER ELECTRICAL DRAWINGS.

NOTE:
ALL NUTS, BOLTS & WASHERS SHALL BE 304 STAINLESS STEEL.



SECTION THRU WELL NO.4
N.T.S.

SECTION A-A
DETAIL 2
N.T.S.

WELL SCREEN CENTERING GUIDE

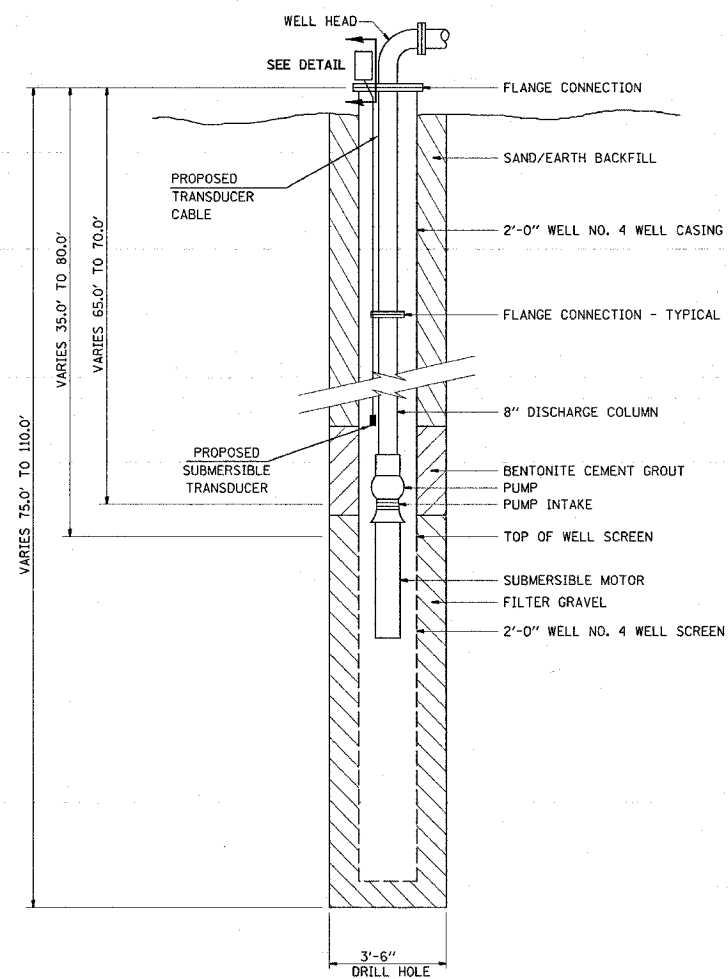
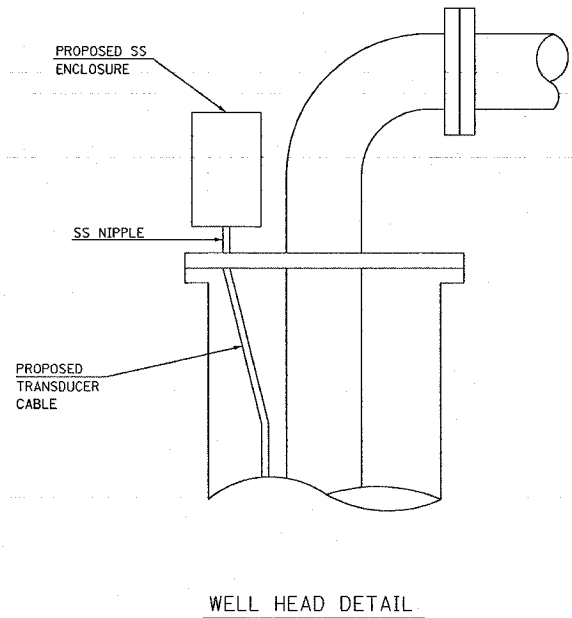
DATE	
BY	
CHECKED	
DESIGNED	
PLANNED	
NOTED	
NO.	

4:00 PM
3/31/2005
c:\prow\ecsa\wells\plan\p1a-02765.dgn
#REF-
#REF-

FIP ROUTE	SECTION	COUNTY	TOTAL SHEETS	SHEET NO.
**	**	ST. CLAIR	8	7
STA. _____ TO STA. _____				
CONTRACT NO.: 76889				

- * VARIOUS
- ** DIST 8 DEEP WELLS 2005-2

PLAN	DATE
SURVEYED	BY
PLOTTED	BY
PROCESSED	BY
REVISIONS CHECKED	BY
NO. _____	CADD FILE NAME



#DATE: 44
 3/31/2005
 c:\projects\1402705\plan\p1402705a.dgn
 REF:

REVISIONS	
NAME	DATE

ILLINOIS DEPARTMENT OF TRANSPORTATION
TYPICAL WELL DETAILS

VARIOUS ROUTES
 SECTION DIST 8 DEEP WELLS 2005-2
 ST. CLAIR COUNTY

DRAWN BY: _____

PLOT DATE: 3/31/2005

