

SECTION	COUNTY	TOTAL SHEETS	SHEET NO.
02-00090-00-BT	DUPAGE	117	14
STA. TO STA.			
IDOT PROJECT NO. M-8003(222)			
SALT CREEK GREENWAY TRAIL			

CONTRACT NO. 83713

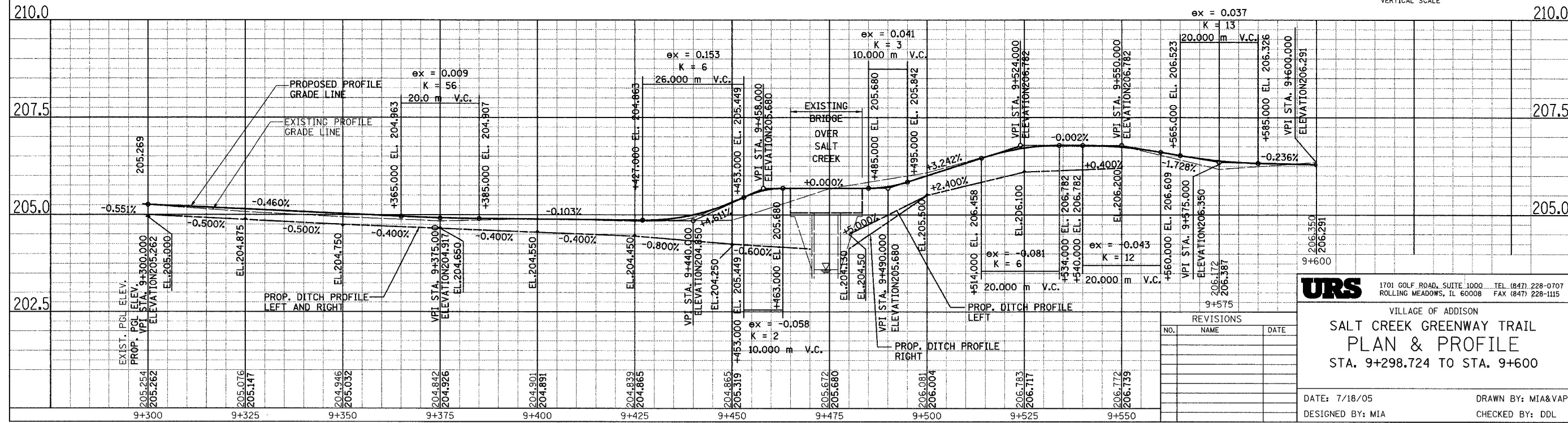
**PROP. CURVE CL1-1**  
 PI STA = 9+353.415  
 N = 51,358.169  
 E = 5,190.869  
 $\Delta = 22^\circ 53' 00''$  (LT)  
 R = 60.000 m  
 T = 12.144 m  
 L = 23.963 m  
 E = 1.217 m

**PROP. CURVE CL1-2**  
 PI STA = 9+408.843  
 N = 51,355.334  
 E = 5,135.189  
 $\Delta = 32^\circ 08' 41''$  (LT)  
 R = 40.000 m  
 T = 8.643 m  
 L = 16.831 m  
 E = 1.220 m

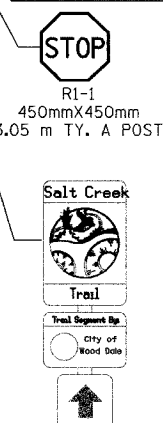
**PROP. CURVE CL1-4**  
 PI STA = 9+596.580  
 N = 51,238.497  
 E = 5,012.787  
 $\Delta = 5^\circ 48' 30''$  (LT)  
 R = 40.000 m  
 T = 2.029 m  
 L = 4.055 m  
 E = 0.051 m

BEGIN PROJECT  
 STA. 9+298.724  
 N = 51,338.492  
 E = 5,242.272

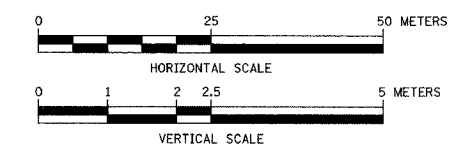
- LEGEND**
- +— SWALE TIP
  - +— DITCH SUMMIT
  - +— DITCH CHECK
  - +— PROPOSED CULVERT
  - +— EXISTING CULVERT
  - EXISTING MANHOLE
  - +— EXISTING FENCE
  - ▲ FLARED END SECTION
  - ⊗ INLET AND PIPE PROTECTION
  - ⊗ TREE REMOVAL
  - +— PERIMETER EROSION BARRIER
  - TTTTTT CHAIN LINK FENCE REMOVAL



PROPOSED BICYCLE TRAIL  
 AGGREGATE BASE COURSE, TYPE B, 150 mm  
 BITUMINOUS SURFACE COURSE 50 mm  
 SOLID YELLOW LINE 100 mm, ALONG  $\phi$   
 STA. 9+553.800 TO STA. 9+600.000



SIGN PANELS TYPE 1  
 WITH ALUMINUM  
 SIGN POST, SPECIAL  
 (SEE DETAIL)



**URS**  
 1701 GOLF ROAD, SUITE 1000 TEL (847) 228-0707  
 ROLLING MEADOWS, IL 60008 FAX (847) 228-1115

VILLAGE OF ADDISON  
**SALT CREEK GREENWAY TRAIL  
 PLAN & PROFILE**  
 STA. 9+298.724 TO STA. 9+600

DATE: 7/18/05  
 DESIGNED BY: MIA  
 DRAWN BY: MIA&VAP  
 CHECKED BY: DDL

REVISIONS

NO.	NAME	DATE