

PROP. CURVE CL1.RE-52
 PI STA = 11+089.914
 N = 49756.023
 E = 4988.273
 $\Delta = 1^\circ 44' 58''$ (RT)
 R = 100.000 m
 T = 1.527 m
 L = 3.053 m
 E = 0.012 m

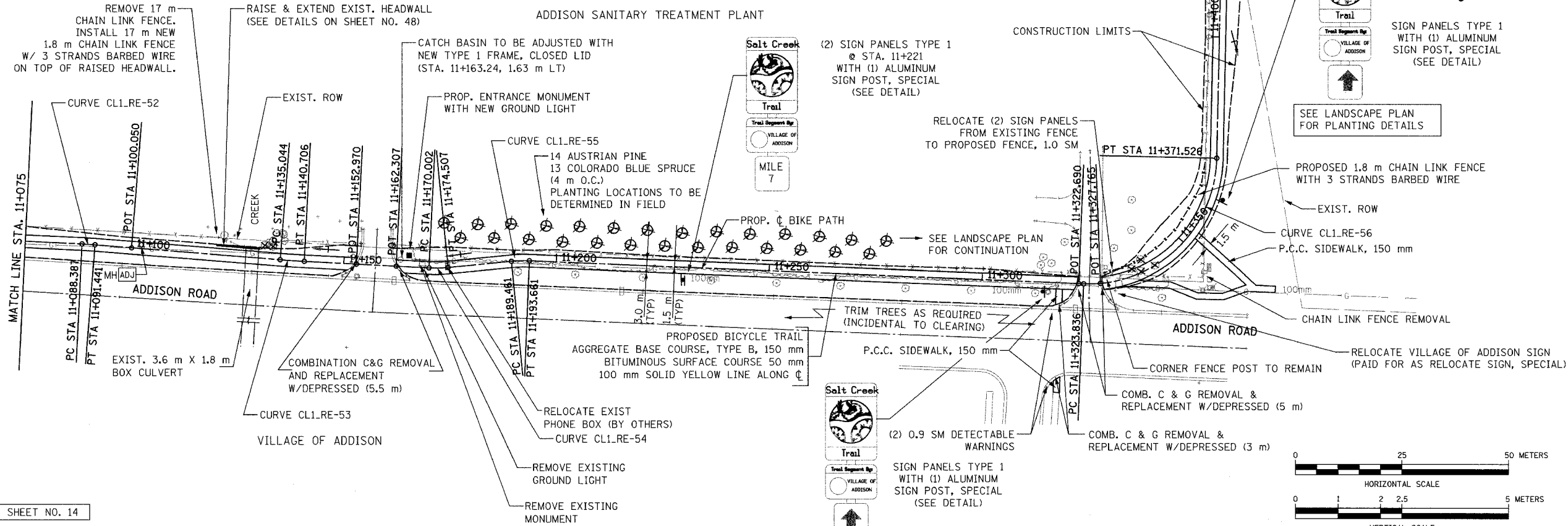
PROP. CURVE CL1.RE-53
 PI STA = 11+137.875
 N = 49708.214
 E = 4984.456
 $\Delta = 1^\circ 37' 19''$ (LT)
 R = 200.000 m
 T = 2.831 m
 L = 5.662 m
 E = 0.020 m

PROP. CURVE CL1.RE-54
 PI STA = 11+172.259
 N = 49673.875
 E = 4982.691
 $\Delta = 8^\circ 36' 11''$ (LT)
 R = 30.000 m
 T = 2.257 m
 L = 4.505 m
 E = 0.085 m

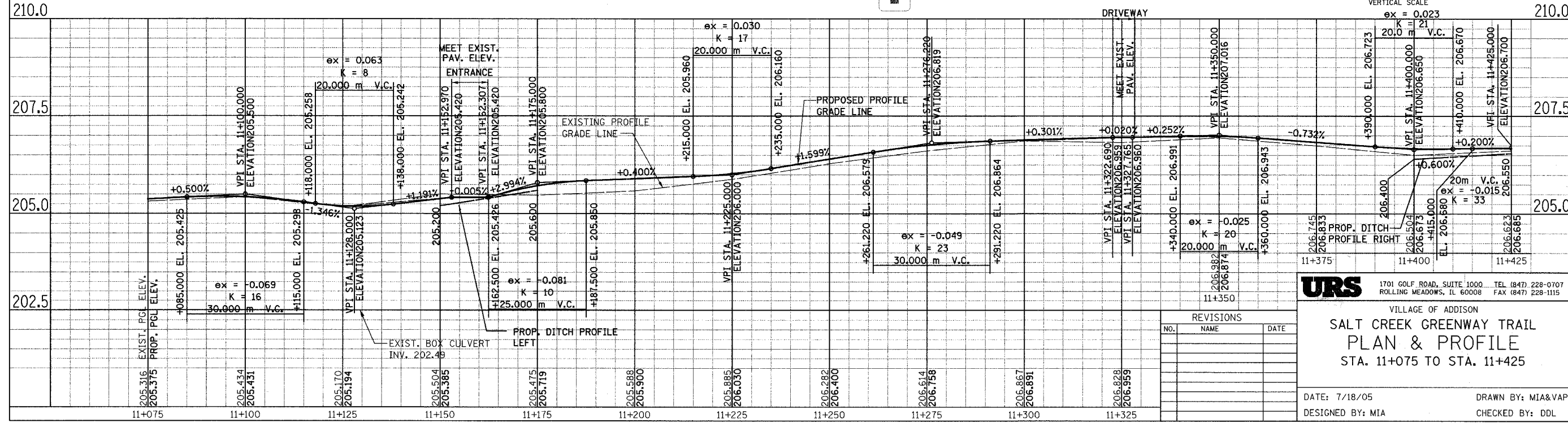
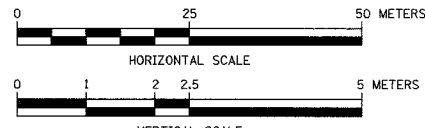
PROP. CURVE CL1.RE-55
 PI STA = 11+191.564
 N = 49654.655
 E = 4984.596
 $\Delta = 8^\circ 01' 23''$ (RT)
 R = 30.000 m
 T = 2.104 m
 L = 4.201 m
 E = 0.074 m

PROP. CURVE CL1.RE-56
 PI STA = 11+354.407
 N = 49491.944
 E = 4977.882
 $\Delta = 91^\circ 04' 47''$ (LT)
 R = 30.000 m
 T = 30.571 m
 L = 47.689 m
 E = 12.832 m

SECTION	COUNTY	TOTAL SHEETS	SHEET NO.
02-00090-00-BT	DUPAGE	117	19
STA. TO STA.			
IDOT PROJECT NO. M-8003(222)			
SALT CREEK GREENWAY TRAIL			
CONTRACT NO. 83713			



FOR LEGEND SEE SHEET NO. 14



URS
 1701 GOLF ROAD, SUITE 1000 TEL (847) 228-0707
 ROLLING MEADOWS, IL 60008 FAX (847) 228-1115

VILLAGE OF ADDISON
**SALT CREEK GREENWAY TRAIL
 PLAN & PROFILE
 STA. 11+075 TO STA. 11+425**

DATE: 7/18/05
 DESIGNED BY: MIA
 DRAWN BY: MIA&VAP
 CHECKED BY: DDL

REVISIONS		
NO.	NAME	DATE