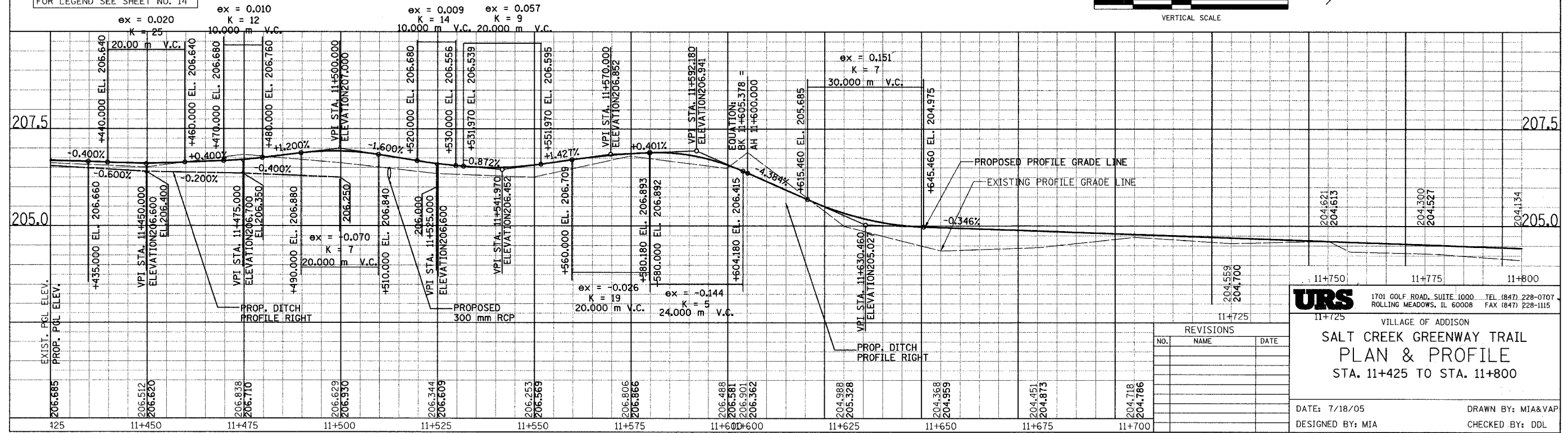
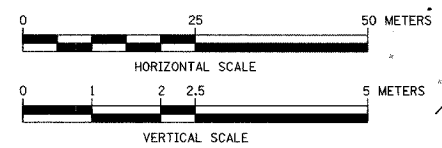


SECTION	COUNTY	TOTAL SHEETS	SHEET NO.
02-00090-00-BT	DUPAGE	117	20
STA. TO STA.			
IDOT PROJECT NO. M-8003(222)			
SALT CREEK GREENWAY TRAIL			
CONTRACT NO. 83713			

PROP. CURVE CL1-60	PROP. CURVE CL1-62	PROP. CURVE CL1-64
PI STA = 11+613.577 N = 49,424.590 E = 5,218.207 $\Delta = 34^\circ 32' 35''$ (LT) R = 30,000 m T = 9.328 m L = 18,087 m E = 1.417 m	PI STA = 11+652.487 N = 49,391.497 E = 5,237.964 $\Delta = 42^\circ 51' 42''$ (LT) R = 30,000 m T = 11.776 m L = 22.442 m E = 2.228 m	PI STA = 11+739.532 N = 49,332.584 E = 5,299.572 $\Delta = 7^\circ 20' 16''$ (LT) R = 30,000 m T = 1.924 m L = 3,842 m E = 0.062 m

PROP. CURVE CL1-RE-57	PROP. CURVE CL1-RE-58	PROP. CURVE CL1-RE-59	PROP. CURVE CL1-61	PROP. CURVE CL1-62	PROP. CURVE CL1-63	PROP. CURVE CL1-65
PI STA = 11+512.336 N = 49488.107 E = 5149.221 $\Delta = 3^\circ 42' 52''$ (RT) R = 30,000 m T = 0.973 m L = 1.945 m E = 0.016 m	PI STA = 11+557.752 N = 49484.151 E = 5194.465 $\Delta = 59^\circ 49' 00''$ (RT) R = 30,000 m T = 17.257 m L = 31.320 m E = 4.609 m	PI STA = 11+601.054 N = 494423.076 E = 5214.251 $\Delta = 12^\circ 26' 34''$ (RT) R = 30,000 m T = 3.270 m L = 6.515 m E = 0.178 m	PI STA = 11+630.561 N = 49,412.685 E = 5,231.104 $\Delta = 29^\circ 21' 04''$ (RT) R = 30,000 m T = 7.857 m L = 15.368 m E = 1.012 m	PI STA = 11+699.317 N = 49,368.111 E = 5,279.811 $\Delta = 31^\circ 43' 02''$ (RT) R = 30,000 m T = 8.522 m L = 16.607 m E = 1.187 m	PI STA = 11+767.973 N = 49,309.694 E = 5,316.461 $\Delta = 28^\circ 32' 45''$ (RT) R = 30,000 m T = 7.632 m L = 14.947 m E = 0.956 m	

FOR LEGEND SEE SHEET NO. 14



**URS**  
1701 GOLF ROAD, SUITE 1000 TEL (847) 228-0707  
ROLLING MEADOWS, IL 60008 FAX (847) 228-1115

VILLAGE OF ADDISON  
**SALT CREEK GREENWAY TRAIL  
PLAN & PROFILE  
STA. 11+425 TO STA. 11+800**

DATE: 7/18/05  
DESIGNED BY: MIA  
DRAWN BY: MIA&VAP  
CHECKED BY: DDL

REVISIONS		
NO.	NAME	DATE