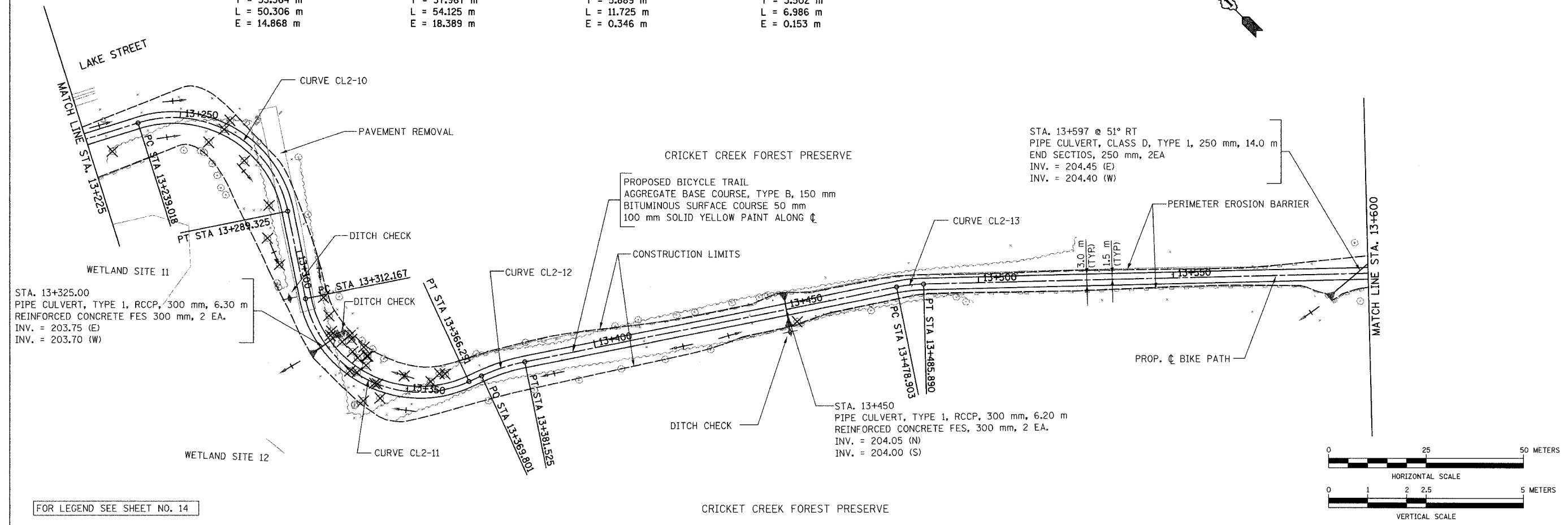
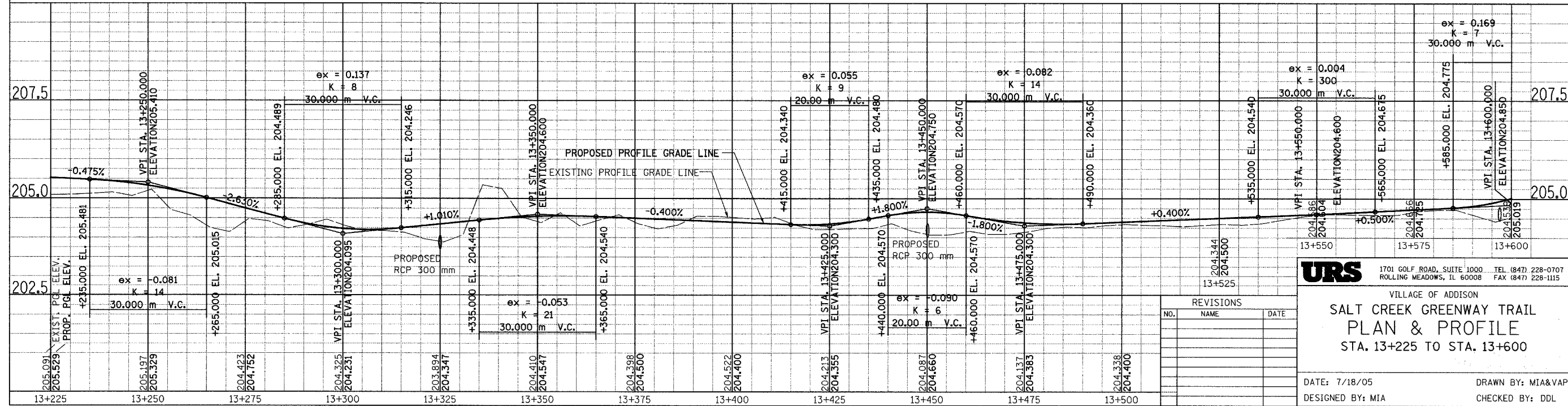


SECTION	COUNTY	TOTAL SHEETS	SHEET NO.
02-0090-00-BT	DUPAGE	117	25
STA. TO STA.			
IDOT PROJECT NO. M-8003(222)			
SALT CREEK GREENWAY TRAIL			
CONTRACT NO. 83713			

PROP. CURVE CL2-10 PI STA = 13+272.382 N = 48,362.456 E = 5,904.720 Δ = 96° 04' 42" (RT) R = 30.000 m T = 33.364 m L = 50.306 m E = 14.868 m	PROP. CURVE CL2-11 PI STA = 13+350.133 N = 48,283.945 E = 5,852.714 Δ = 103° 22' 15" (LT) R = 30.000 m T = 37.967 m L = 54.125 m E = 18.389 m	PROP. CURVE CL2-12 PI STA = 13+375.690 N = 48,267.629 E = 5,897.181 Δ = 13° 26' 08" (RT) R = 50.000 m T = 5.889 m L = 11.725 m E = 0.346 m	PROP. CURVE CL2-13 PI STA = 13+482.405 N = 48,208.567 E = 5,986.127 Δ = 10° 00' 27" (RT) R = 40.000 m T = 3.502 m L = 6.986 m E = 0.153 m
---	--	---	--



FOR LEGEND SEE SHEET NO. 14



URS 1701 GOLF ROAD, SUITE 1000 TEL (847) 228-0707
ROLLING MEADOWS, IL 60008 FAX (847) 228-1115

VILLAGE OF ADDISON
SALT CREEK GREENWAY TRAIL
PLAN & PROFILE
STA. 13+225 TO STA. 13+600

REVISIONS		
NO.	NAME	DATE

DATE: 7/18/05 DRAWN BY: MIA&VAP
DESIGNED BY: MIA CHECKED BY: DDL