

PROP. CURVE CL2-21
 PI STA = 13+981.797
 N = 47,830.267
 E = 6,195.983
 $\Delta = 16^\circ 30' 57''$ (LT)
 R = 45.000 m
 T = 6.528 m
 L = 12.966 m
 E = 0.471 m

PROP. CURVE CL2-22
 PI STA = 14+020.102
 N = 47,796.856
 E = 6,214.901
 $\Delta = 57^\circ 44' 22''$ (LT)
 R = 55.000 m
 T = 30.324 m
 L = 55.426 m
 E = 7.805 m

PROP. CURVE CL2-24
 PI STA = 14+148.616
 N = 47,735.751
 E = 6,295.075
 $\Delta = 7^\circ 05' 49''$ (RT)
 R = 80.000 m
 T = 4.961 m
 L = 9.909 m
 E = 0.154 m

PROP. CURVE CL2-23
 PI STA = 14+106.431
 N = 47,792.477
 E = 6,306.347
 $\Delta = 98^\circ 29' 52''$ (RT)
 R = 26.000 m
 T = 30.173 m
 L = 44.697 m
 E = 13.830 m

PROP. CURVE CL2-25
 PI STA = 14+179.604
 N = 47,707.881
 E = 6,285.838
 $\Delta = 18^\circ 49' 10''$ (LT)
 R = 40.000 m
 T = 6.629 m
 L = 13.139 m
 E = 0.546 m

PROP. CURVE CL2-26
 PI STA = 14+289.020
 N = 47,596.710
 E = 6,286.776
 $\Delta = 25^\circ 53' 38''$ (RT)
 R = 30.000 m
 T = 6.897 m
 L = 13.558 m
 E = 0.783 m

SECTION	COUNTY	TOTAL SHEETS	SHEET NO.
02-00090-00-BT	DUPAGE	117	27
STA. TO STA.			
IDOT PROJECT NO. M-8003(222)			
SALT CREEK GREENWAY TRAIL			

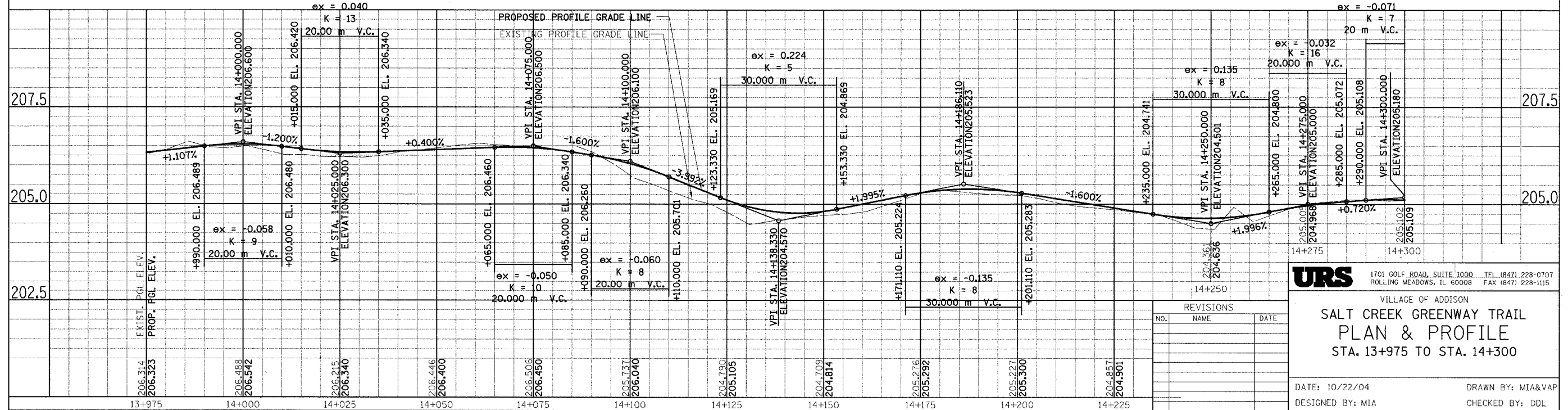
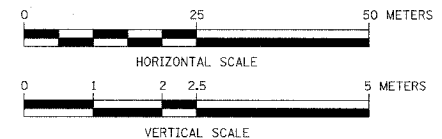
CONTRACT NO. 83713

CRICKET CREEK FOREST PRESERVE

CRICKET CREEK FOREST PRESERVE

CRICKET CREEK FOREST PRESERVE

FOR LEGEND SEE SHEET NO. 14



URS
 1701 GOLF ROAD, SUITE 1000 TEL (847) 228-0707
 ROLLING MEADOWS, IL 60008 FAX (847) 228-1115

VILLAGE OF ADDISON
**SALT CREEK GREENWAY TRAIL
 PLAN & PROFILE
 STA. 13+975 TO STA. 14+300**

DATE: 10/22/04
 DESIGNED BY: MIA
 DRAWN BY: MIA&VAP
 CHECKED BY: DDL