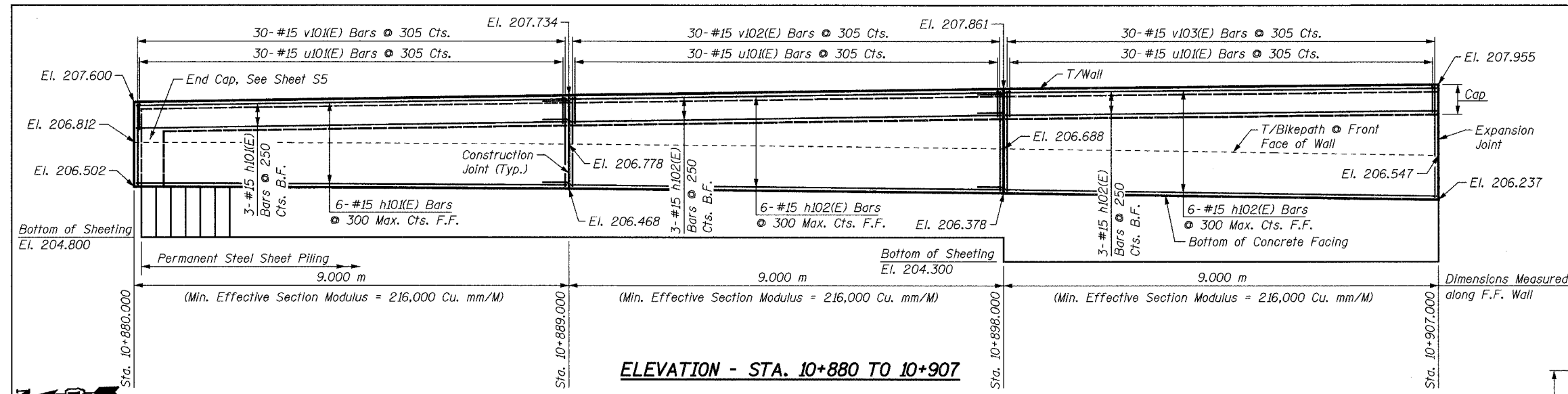
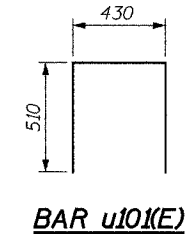
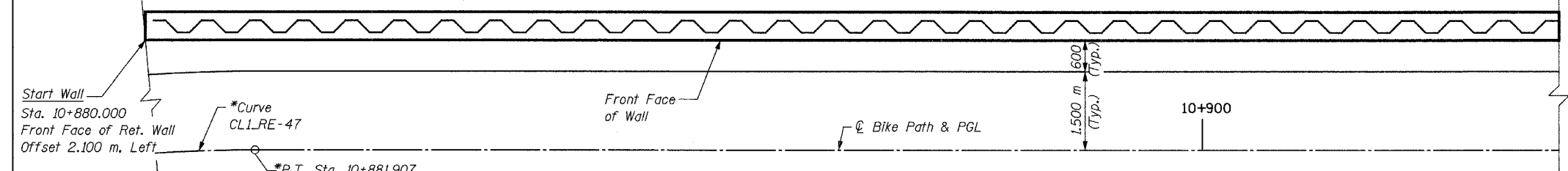


**BILL OF MATERIAL**

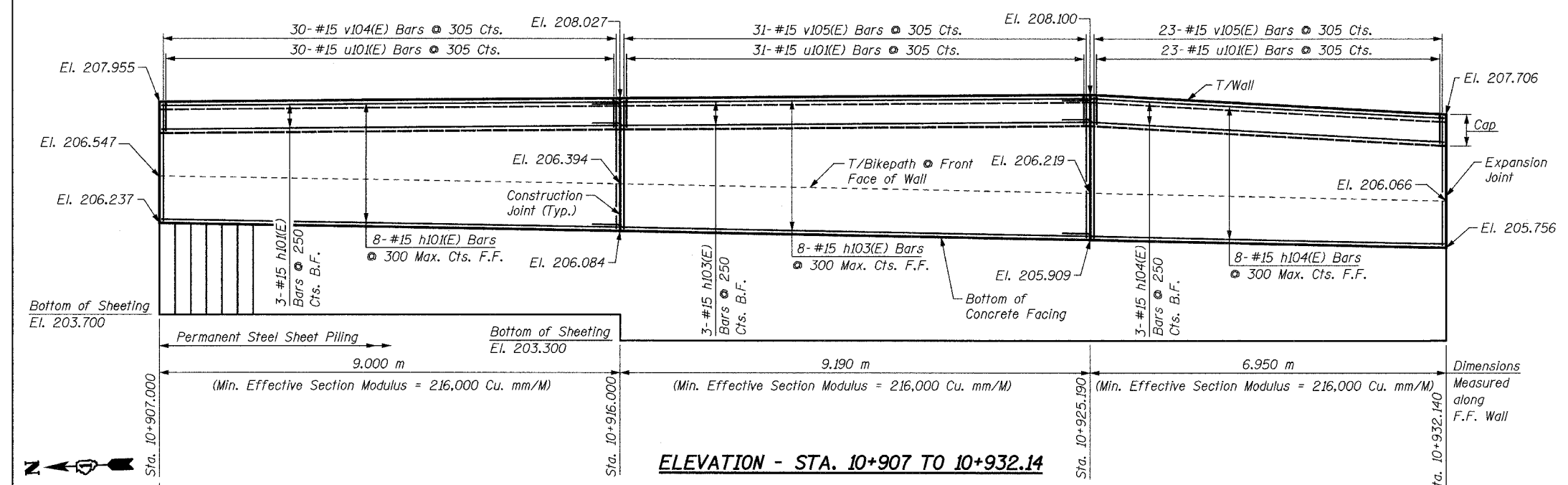
Bar	No.	Size	Length	Shape
h10(E)	20	#15	8.90 m	—
h102(E)	18	#15	9.54 m	—
h103(E)	11	#15	9.73 m	—
h104(E)	11	#15	7.49 m	—
h105(E)	10	#15	7.77 m	—
h106(E)	10	#15	8.62 m	—
h107(E)	8	#15	5.85 m	—
h108(E)	8	#15	6.54 m	—
u10(E)	278	#15	1.45 m	□
v10(E)	32	#15	1.17 m	—
v102(E)	30	#15	1.38 m	—
v103(E)	57	#15	1.62 m	—
v104(E)	56	#15	1.94 m	—
v105(E)	54	#15	2.09 m	—
v106(E)	20	#15	1.29 m	—
v107(E)	22	#15	1.04 m	—
Concrete Structures		Cu. M	46.6	
Reinforcement Bars, Epoxy Coated		kg	2,590	
Structure Excavation		Cu. M	15.1	
Permanent Steel Sheet Piling		Sq. M	284	



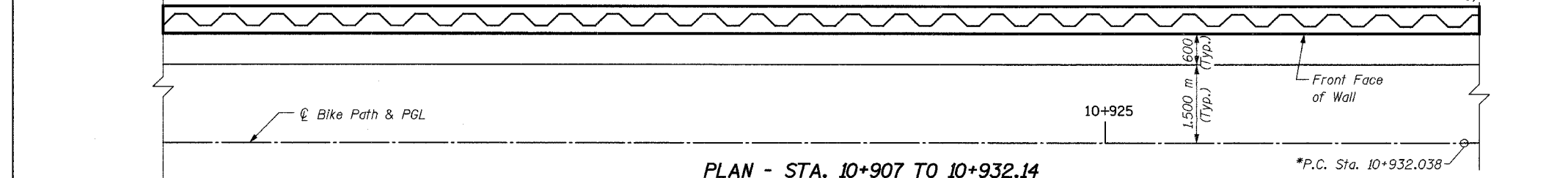
**ELEVATION - STA. 10+880 TO 10+907**



**PLAN - STA. 10+880 TO 10+907**  
(Reinforcement Omitted for Clarity)



**ELEVATION - STA. 10+907 TO 10+932.14**



**PLAN - STA. 10+907 TO 10+932.14**  
(Reinforcement Omitted for Clarity)

**\*NOTE:**

For horizontal curve and alignment information, see Plan & Profile drawings.

**LEGEND**

F.F. = Front Face  
B.F. = Back Face

**NOTES:**

- Fan h(E) bars for even distribution over face of wall.
- Cut v(E) bars as necessary in field to fit.
- Minimum lap for #15 bar = 640 mm.
- All exposed edges of concrete shall have a 20 mm chamfer unless shown otherwise.
- For minimum effective section modulus properties for sheet piling sections, refer to special provision for Permanent Steel Sheet Piling.
- Work this sheet with Sheet S3 & S5.
- Bars designated (E) shall be epoxy coated.
- All dimensions are in millimeters (mm) unless otherwise noted.
- For Typical Section thru Wall, see Sheet S5.

REVISIONS		NAME	DATE
NO.	DESCRIPTION		

**URS**

1701 GOLF ROAD, SUITE 1000  
ROLLING MEADOWS, IL 60008

TEL (847) 228-0707  
FAX (847) 228-1115

VILLAGE OF ADDISON

**SALT CREEK GREENWAY TRAIL**

RET. WALL, STA. 10+880 TO 10+960

PLAN AND ELEVATION

DATE: 06/30/05

DRAWN BY: MDS

DESIGNED BY: MDS

CHECKED BY: GAT