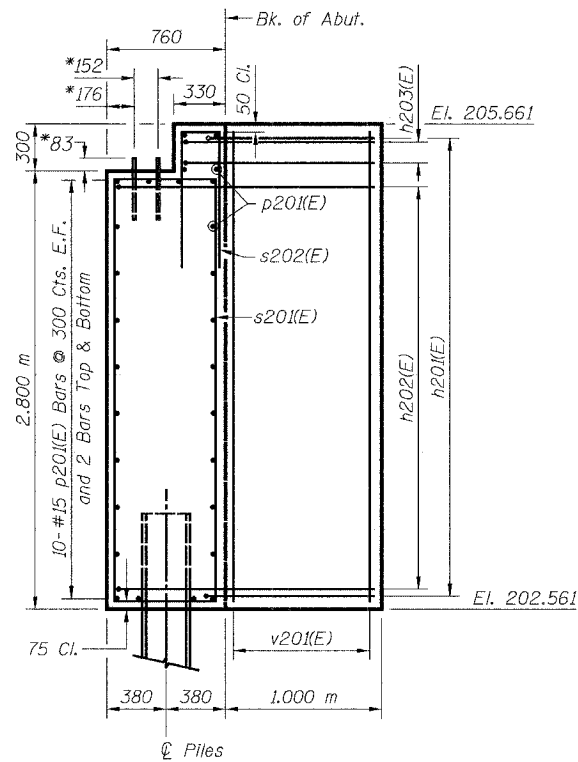


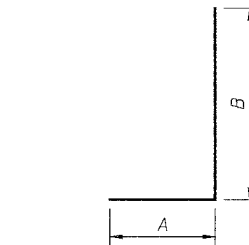
ELEVATION
(East Abutment)



SIDE VIEW

*Anchor bolt size and locations shall be checked against the Bridge Fabricator's requirements prior to setting them.

Bar	A	B
h201(E)	0.890 m	1.000 m
h202(E)	0.890 m	1.660 m
h203(E)	0.890 m	1.230 m



BAR h201(E) THRU h203(E)

BILL OF MATERIAL

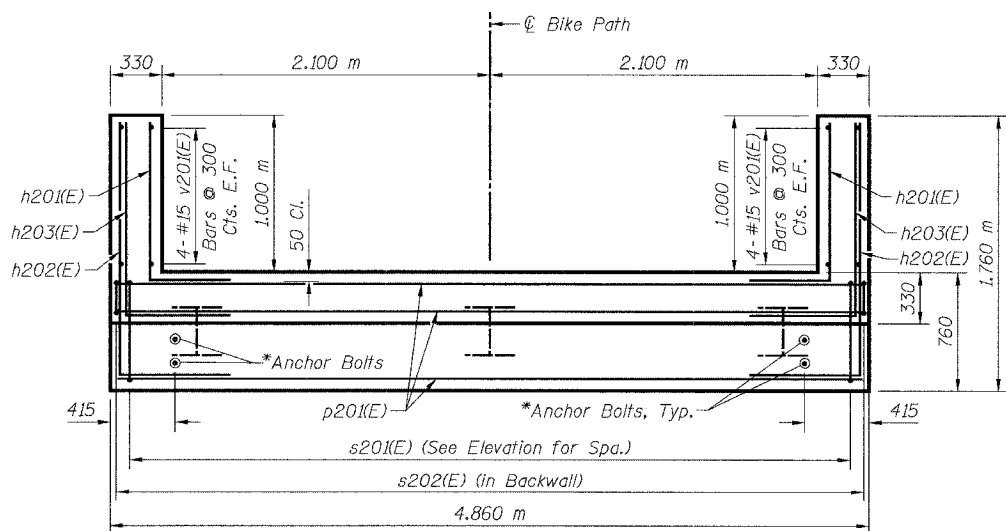
Bar	No.	Size	Length	Shape
h201(E)	22	#15	1.89 m	┌
h202(E)	20	#15	2.55 m	┌
h203(E)	4	#15	2.12 m	┌
p201(E)	28	#15	4.76 m	—
s201(E)	14	#15	6.94 m	└
s202(E)	17	#15	2.53 m	└
v201(E)	16	#15	2.97 m	—
Concrete Structures			Cu. M	12.9
Reinforcement Bars, Epoxy Coated			kg	670
Furnishing Steel Piles HP310x79			Meter	57
Driving Steel Piles			Meter	57
Metal Shoes			Each	3
Structure Excavation			Cu. M	7.6

LEGEND

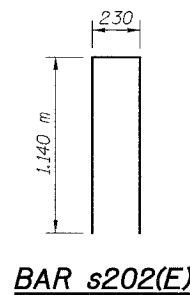
E.F. = Each Face

MIN. BAR LAP

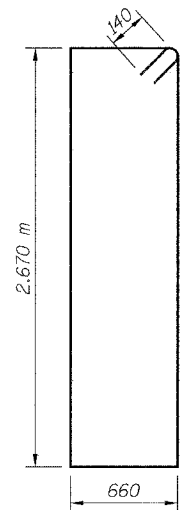
#15 = 890



PLAN
(East Abutment)



BAR s202(E)



BAR s201(E)

PILE DATA:

Type: HP310x79
Capacity: Driven to Refusal
Est. Length: 19.0 m
No. Required: 3

NOTES:

Space reinforcement in cap to miss anchor bolts.

All edges shall have standard 20 mm chamfers except as noted.

For Anchor Bolt Details, see Sheet S27.

There shall be no splicing of longitudinal bars. Bars shall be ordered full length.

Bars designated (E) shall be epoxy coated.

SHEET S10 of S28

REVISIONS		NAME	DATE

URS

1701 GOLF ROAD, SUITE 1000
ROLLING MEADOWS, IL 60008

TEL (847) 228-0707
FAX (847) 228-1115

VILLAGE OF ADDISON

SALT CREEK GREENWAY TRAIL

PEDESTRIAN BRIDGE, STA. 12+535.5

EAST ABUTMENT DETAILS

DATE: 11/03/04	DRAWN BY: MDS
DESIGNED BY: MDS	CHECKED BY: GAT