

**BILL OF MATERIAL**

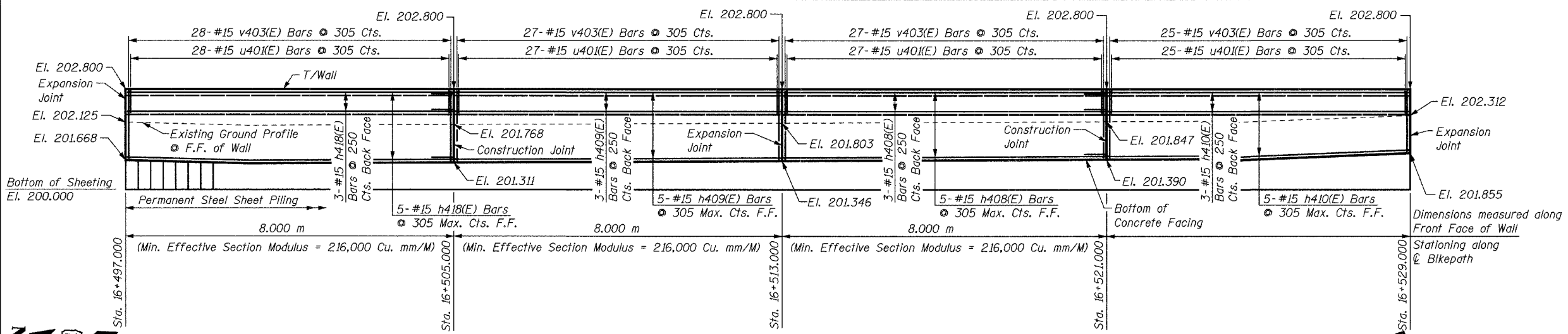
Bar	No.	Size	Length	Shape
h408(E)	15	#15	7.90 m	—
h409(E)	15	#15	8.60 m	—
h410(E)	8	#15	8.20 m	—
h411(E)	7	#15	9.15 m	—
h418(E)	8	#15	8.99 m	—
h419(E)	7	#15	8.34 m	—
u401(E)	215	#15	1.53 m	□
v403(E)	107	#15	1.37 m	—
v442(E)	108	#15	0.87 m	—
Concrete Structures			Cu. M	34.3
Reinforcement Bars, Epoxy Coated			kg	1,700
Structure Excavation			Cu. M	27.0
Permanent Steel Sheet Piling			Sq. M	145
Pipe Handrail			Mefer	32

**NOTE:**  
Pipe Handrail present & mounted to the top of East Wall only

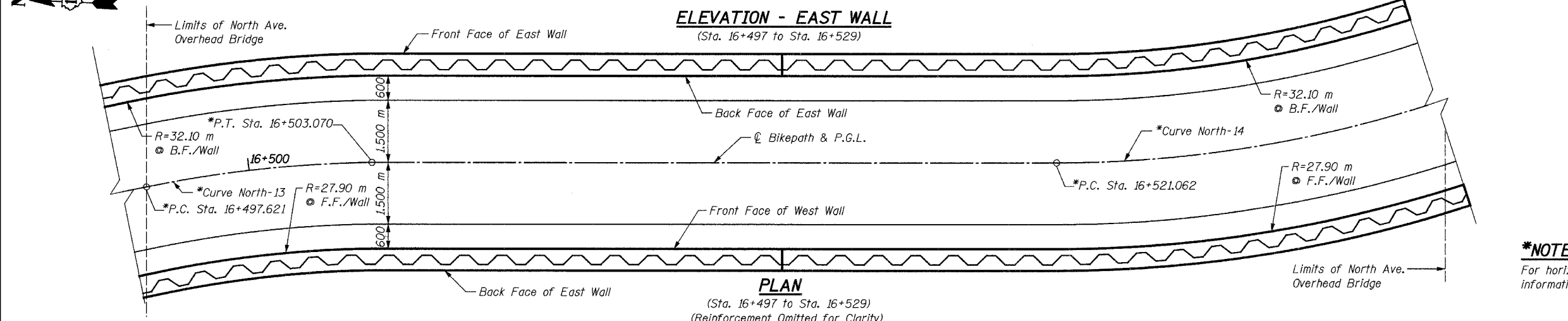
**\*NOTE:**  
For horizontal curve and alignment information, see Plan & Profile drawings.

**NOTES:**  
See Sheet S16 for Notes.

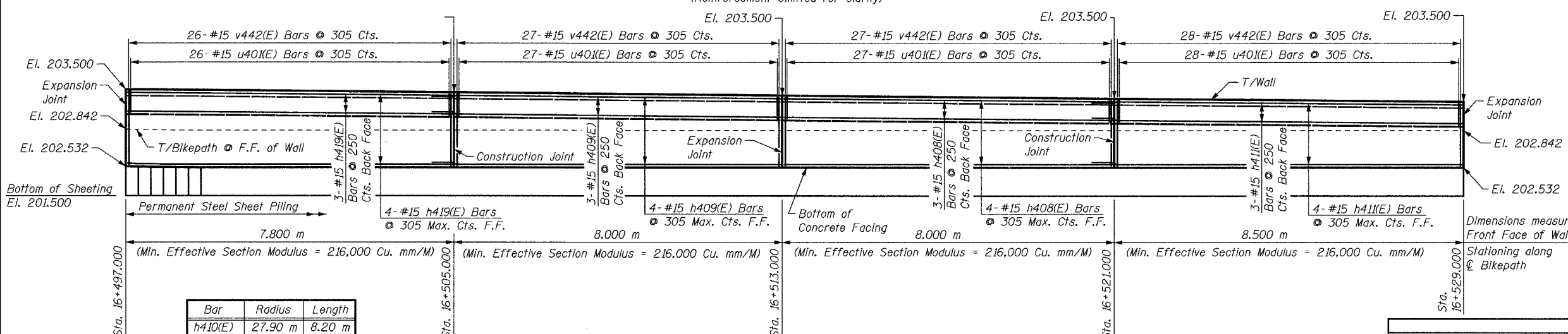
SHEET S19 of S28



**ELEVATION - EAST WALL**  
(Sta. 16+497 to Sta. 16+529)

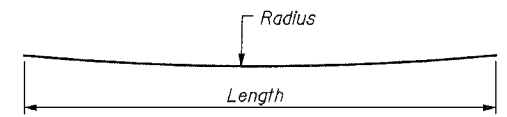


**PLAN**  
(Sta. 16+497 to Sta. 16+529)  
(Reinforcement Omitted for Clarity)

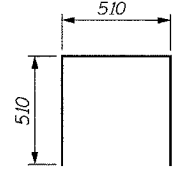


**ELEVATION - WEST WALL**  
(Sta. 16+497 to Sta. 16+529)

Bar	Radius	Length
h410(E)	27.90 m	8.20 m
h411(E)	32.10 m	9.15 m
h418(E)	27.90 m	8.99 m
h419(E)	27.90 m	8.34 m



**BAR h410(E) AND h411(E)**



**BAR u401(E)**

REVISIONS		NAME	DATE
NO.	DESCRIPTION		

**URS** 1701 GOLF ROAD, SUITE 1000 TEL (847) 228-0707  
ROLLING MEADOWS, IL 60008 FAX (847) 228-1115

VILLAGE OF ADDISON  
**MULTI-CREEK GREENWAY TRAIL**  
RET. WALL STA. 16+497 TO 16+529  
PLAN & ELEVATION

DATE: 06/30/05 DRAWN BY: MDS  
DESIGNED BY: MDS CHECKED BY: GAT