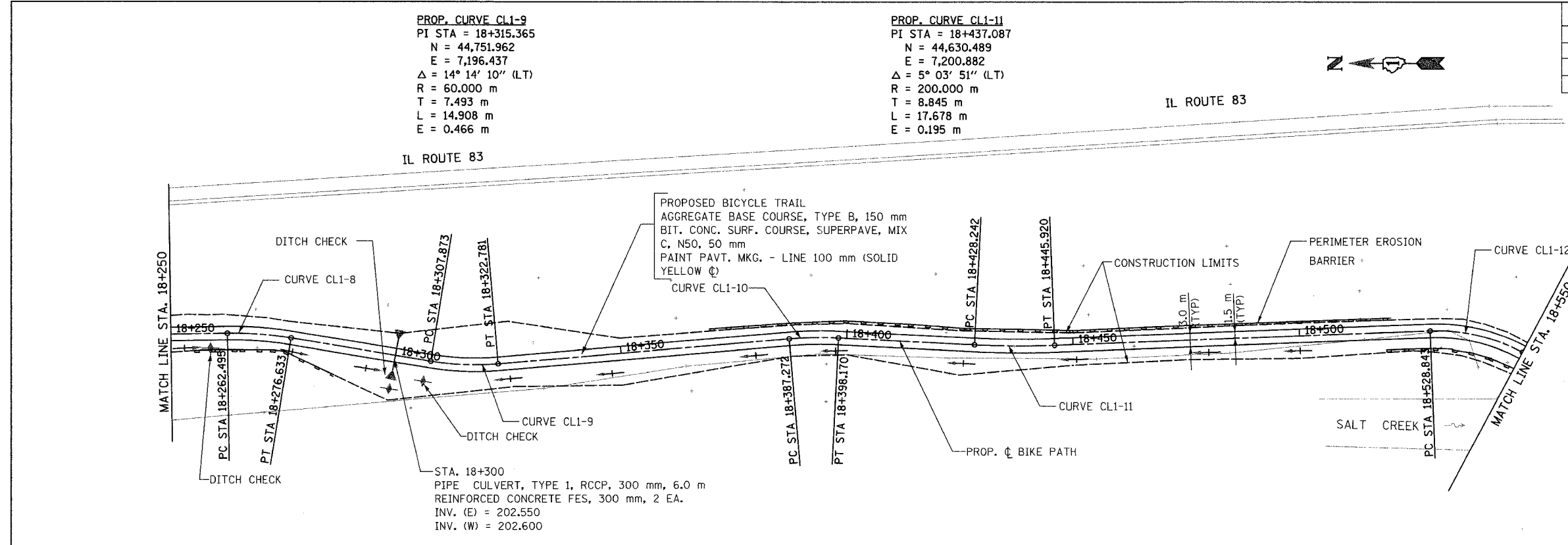


|                              |        |              |           |
|------------------------------|--------|--------------|-----------|
| SECTION                      | COUNTY | TOTAL SHEETS | SHEET NO. |
| 02-00034-00-BT               | DUPAGE | 108          | 11        |
| STA. TO STA.                 |        |              |           |
| IDOT PROJECT NO. M-8003(216) |        |              |           |
| SALT CREEK GREENWAY TRAIL    |        |              |           |
| CONTRACT NO. 83714           |        |              |           |



**PROP. CURVE CL1-9**  
 PI STA = 18+315.365  
 N = 44,751.962  
 E = 7,196.437  
 $\Delta = 14^\circ 14' 10''$  (LT)  
 R = 60.000 m  
 T = 7.493 m  
 L = 14.908 m  
 E = 0.466 m

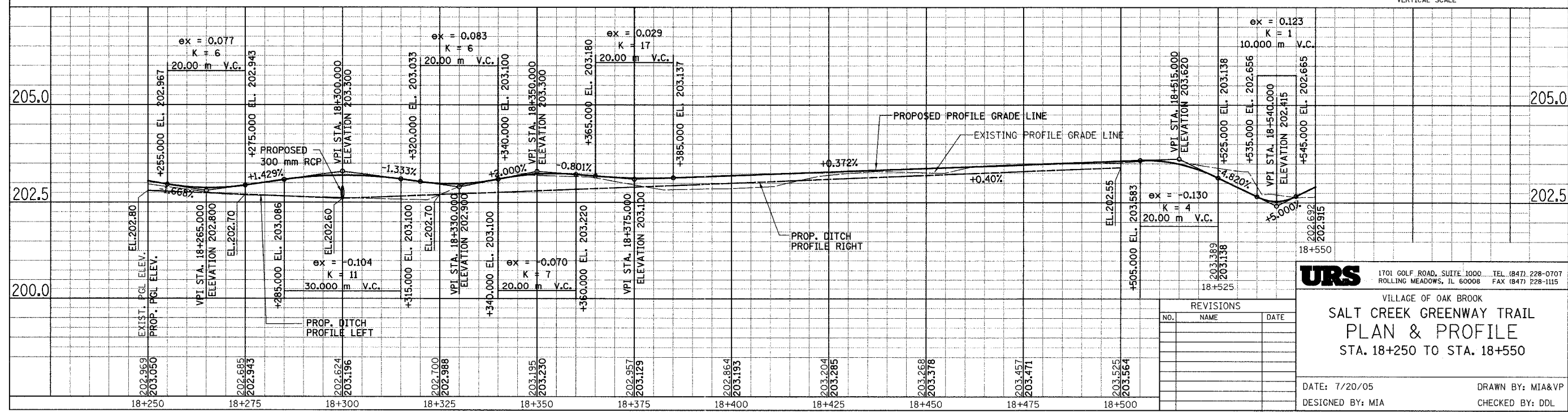
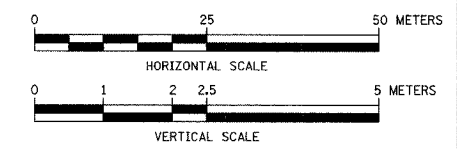
**PROP. CURVE CL1-11**  
 PI STA = 18+437.087  
 N = 44,630.489  
 E = 7,200.882  
 $\Delta = 5^\circ 03' 51''$  (LT)  
 R = 200.000 m  
 T = 8.845 m  
 L = 17.678 m  
 E = 0.195 m

**PROP. CURVE CL1-8**  
 PI STA = 18+269.583  
 N = 44,797.180  
 E = 7,203.841  
 $\Delta = 10^\circ 07' 32''$  (RT)  
 R = 80.000 m  
 T = 7.087 m  
 L = 14.138 m  
 E = 0.313 m

**PROP. CURVE CL1-10**  
 PI STA = 18+392.729  
 N = 44,674.808  
 E = 7,203.102  
 $\Delta = 7^\circ 48' 17''$  (RT)  
 R = 80.000 m  
 T = 5.457 m  
 L = 10.898 m  
 E = 0.186 m

**PROP. CURVE CL1-12**  
 PI STA = 18+539.684  
 N = 44,527.957  
 E = 7,204.815  
 $\Delta = 30^\circ 19' 39''$  (RT)  
 R = 40.000 m  
 T = 10.841 m  
 L = 21.173 m  
 E = 1.443 m

FOR LEGEND SEE SHEET NO. 10



| REVISIONS |      |      |
|-----------|------|------|
| NO.       | NAME | DATE |
|           |      |      |
|           |      |      |
|           |      |      |
|           |      |      |

**URS**  
 1701 GOLF ROAD, SUITE 1000 TEL (847) 228-0707  
 ROLLING MEADOWS, IL 60008 FAX (847) 228-1115

VILLAGE OF OAK BROOK  
**SALT CREEK GREENWAY TRAIL  
 PLAN & PROFILE**  
 STA. 18+250 TO STA. 18+550

DATE: 7/20/05  
 DESIGNED BY: MIA  
 DRAWN BY: MIA&VP  
 CHECKED BY: DDL