

SECTION	COUNTY	TOTAL SHEETS	SHEET NO.
02-00034-00-BT	DUPAGE	108	12
STA. TO STA.			
IDOT PROJECT NO. M-8003(216)			
SALT CREEK GREENWAY TRAIL			

CONTRACT NO. 83714

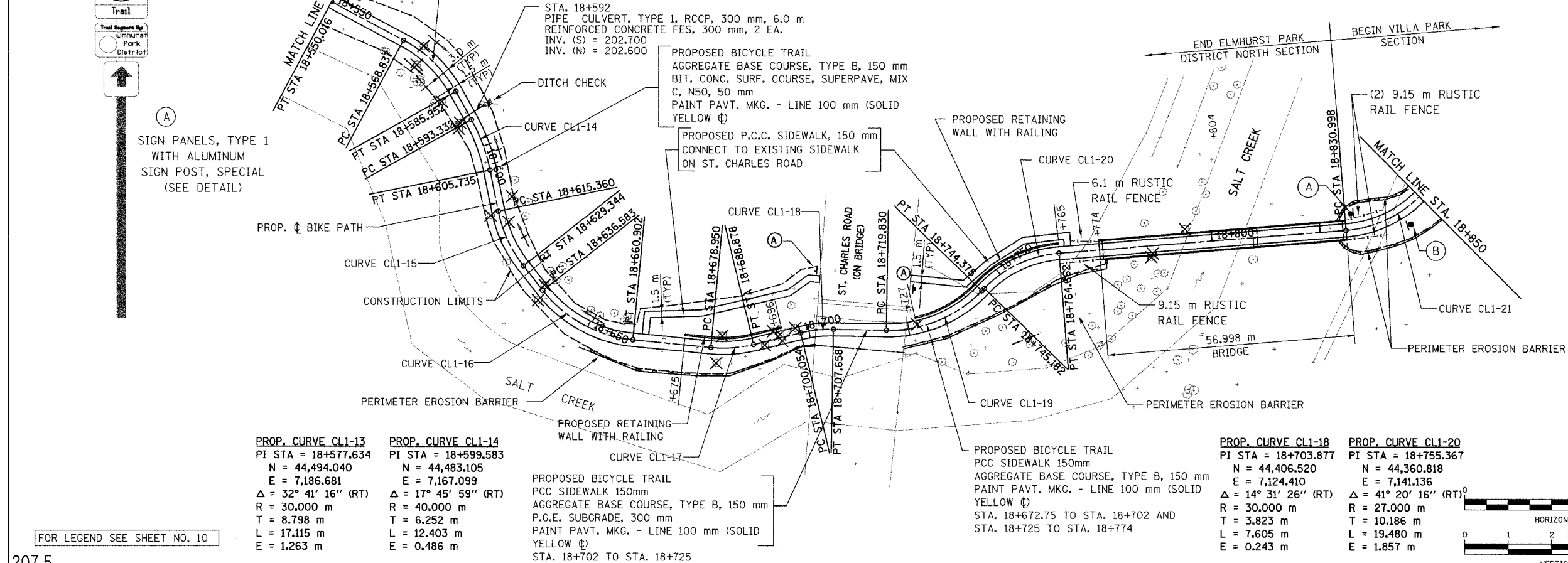


SIGN PANELS, TYPE 1 WITH ALUMINUM SIGN POST, SPECIAL (SEE DETAIL)



SIGN PANELS, TYPE 1 WITH ALUMINUM SIGN POST, SPECIAL (SEE DETAIL)

PROP. CURVE CL1-15 PI STA = 18+622.481 N = 44,478.553 E = 7,144.556 $\Delta = 26^\circ 42' 21''$ (LT) R = 30,000 m T = 7.121 m L = 13.983 m E = 0.834 m	PROP. CURVE CL1-16 PI STA = 18+649.455 N = 44,461.742 E = 7,123.132 $\Delta = 46^\circ 26' 47''$ (LT) R = 30,000 m T = 12.872 m L = 24,319 m E = 2.645 m	PROP. CURVE CL1-17 PI STA = 18+683.973 N = 44,425.973 E = 7,119.730 $\Delta = 18^\circ 57' 42''$ (LT) R = 30,000 m T = 5.010 m L = 9.928 m E = 0.415 m	PROP. CURVE CL1-19 PI STA = 18+732.836 N = 44,377.524 E = 7,123.907 $\Delta = 46^\circ 52' 42''$ (LT) R = 30,000 m T = 13.007 m L = 24,545 m E = 2.698 m	PROP. CURVE CL1-21 PI STA = 18+847.089 N = 44,268.495 E = 7,148.476 $\Delta = 61^\circ 35' 14''$ (LT) R = 27,000 m T = 16.091 m L = 29.022 m E = 4.431 m
--	---	---	---	---

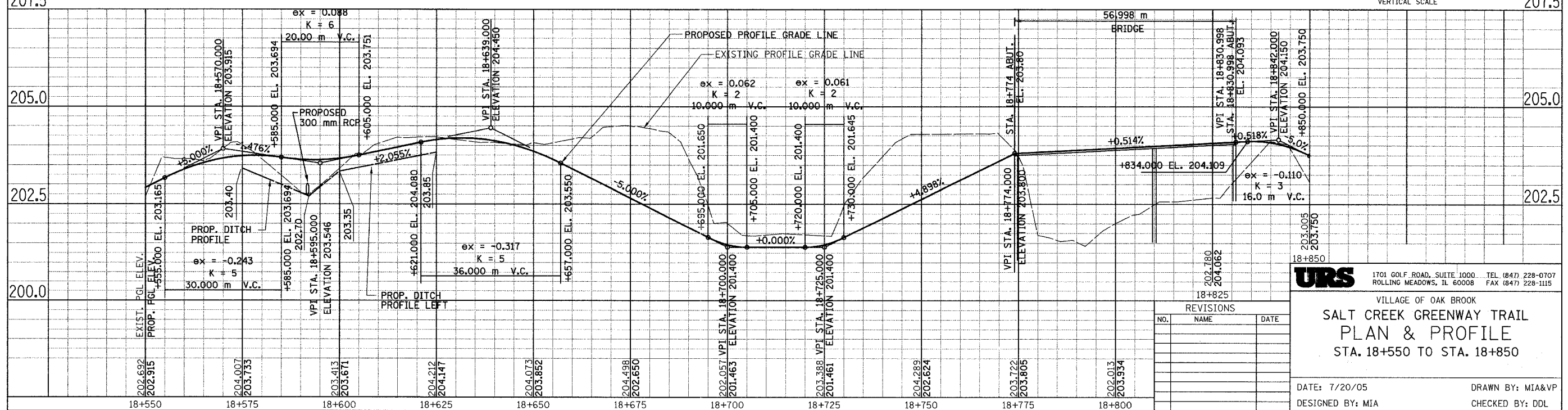
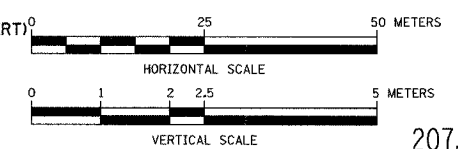


PROP. CURVE CL1-13 PI STA = 18+577.634 N = 44,494.040 E = 7,186.681 $\Delta = 32^\circ 41' 16''$ (RT) R = 30,000 m T = 8.798 m L = 17.115 m E = 1.263 m	PROP. CURVE CL1-14 PI STA = 18+599.583 N = 44,483.105 E = 7,167.099 $\Delta = 17^\circ 45' 59''$ (RT) R = 40,000 m T = 6.252 m L = 12.403 m E = 0.486 m
--	--

PROPOSED BICYCLE TRAIL
 PCC SIDEWALK 150mm
 AGGREGATE BASE COURSE, TYPE B, 150 mm
 P.G.E. SUBGRADE, 300 mm
 PAINT PAVT. MKG. - LINE 100 mm (SOLID YELLOW \square)
 STA. 18+702 TO STA. 18+725

PROPOSED BICYCLE TRAIL
 PCC SIDEWALK 150mm
 AGGREGATE BASE COURSE, TYPE B, 150 mm
 PAINT PAVT. MKG. - LINE 100 mm (SOLID YELLOW \square)
 STA. 18+725 TO STA. 18+774

PROP. CURVE CL1-18 PI STA = 18+703.877 N = 44,406.520 E = 7,124.410 $\Delta = 14^\circ 31' 26''$ (RT) R = 30,000 m T = 3.823 m L = 7.605 m E = 0.243 m	PROP. CURVE CL1-20 PI STA = 18+755.367 N = 44,360.818 E = 7,141.136 $\Delta = 41^\circ 20' 16''$ (RT) R = 27,000 m T = 10.186 m L = 19.480 m E = 1.857 m
---	---



REVISIONS		
NO.	NAME	DATE

URS 1701 GOLF ROAD, SUITE 1000 TEL (847) 228-0707
 ROLLING MEADOWS, IL 60008 FAX (847) 228-1115

VILLAGE OF OAK BROOK
SALT CREEK GREENWAY TRAIL
PLAN & PROFILE
 STA. 18+550 TO STA. 18+850

DATE: 7/20/05 DRAWN BY: MIA&VP
 DESIGNED BY: MIA CHECKED BY: DDL