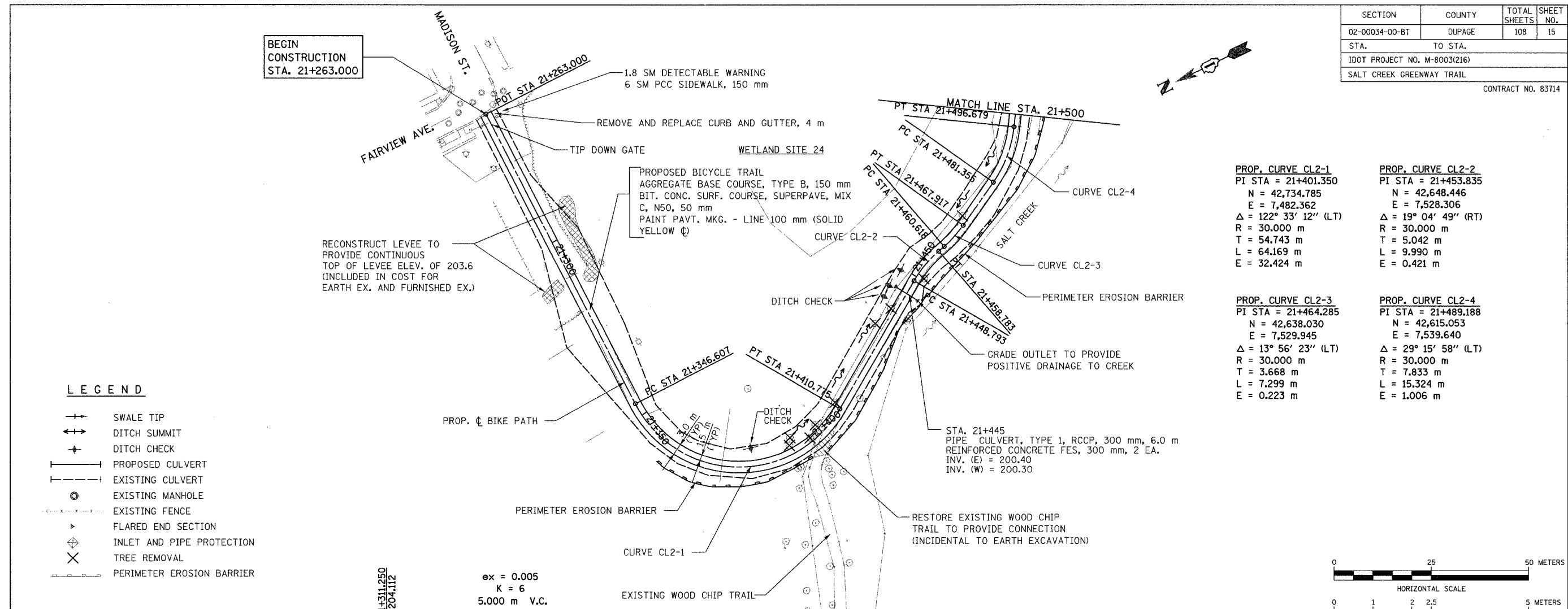


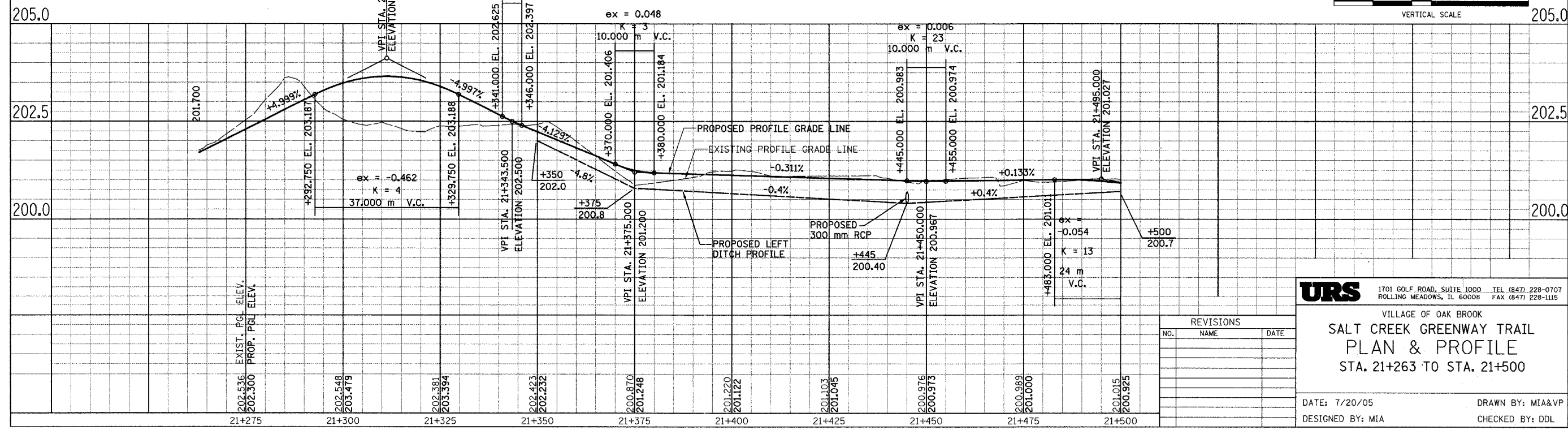
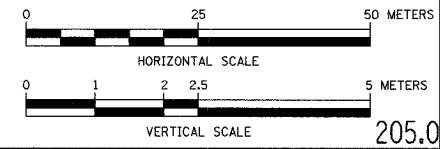
SECTION	COUNTY	TOTAL SHEETS	SHEET NO.
02-00034-00-BT	DUPAGE	108	15
STA.	TO STA.		
IDOT PROJECT NO. M-8003(216)			
SALT CREEK GREENWAY TRAIL			
CONTRACT NO. 83714			

BEGIN CONSTRUCTION STA. 21+263.000



- LEGEND**
- +— SWALE TIP
 - +— DITCH SUMMIT
 - + DITCH CHECK
 - +— PROPOSED CULVERT
 - +— EXISTING CULVERT
 - EXISTING MANHOLE
 - +— EXISTING FENCE
 - ▶ FLARED END SECTION
 - ⊕ INLET AND PIPE PROTECTION
 - ✕ TREE REMOVAL
 - +— PERIMETER EROSION BARRIER

PROP. CURVE CL2-1 PI STA = 21+401.350 N = 42,734.785 E = 7,482.362 $\Delta = 122^\circ 33' 12''$ (LT) R = 30.000 m T = 54.743 m L = 64.169 m E = 32.424 m	PROP. CURVE CL2-2 PI STA = 21+453.835 N = 42,648.446 E = 7,528.306 $\Delta = 19^\circ 04' 49''$ (RT) R = 30.000 m T = 5.042 m L = 9.990 m E = 0.421 m
PROP. CURVE CL2-3 PI STA = 21+464.285 N = 42,638.030 E = 7,529.945 $\Delta = 13^\circ 56' 23''$ (LT) R = 30.000 m T = 3.668 m L = 7.299 m E = 0.223 m	PROP. CURVE CL2-4 PI STA = 21+489.188 N = 42,615.053 E = 7,539.640 $\Delta = 29^\circ 15' 58''$ (LT) R = 30.000 m T = 7.833 m L = 15.324 m E = 1.006 m



URS 1701 GOLF ROAD, SUITE 1000 TEL (847) 228-0707
 ROLLING MEADOWS, IL 60008 FAX (847) 228-1115

VILLAGE OF OAK BROOK
**SALT CREEK GREENWAY TRAIL
 PLAN & PROFILE
 STA. 21+263 TO STA. 21+500**

NO.	NAME	DATE

DATE: 7/20/05 DRAWN BY: MIA&VP
 DESIGNED BY: MIA CHECKED BY: DDL