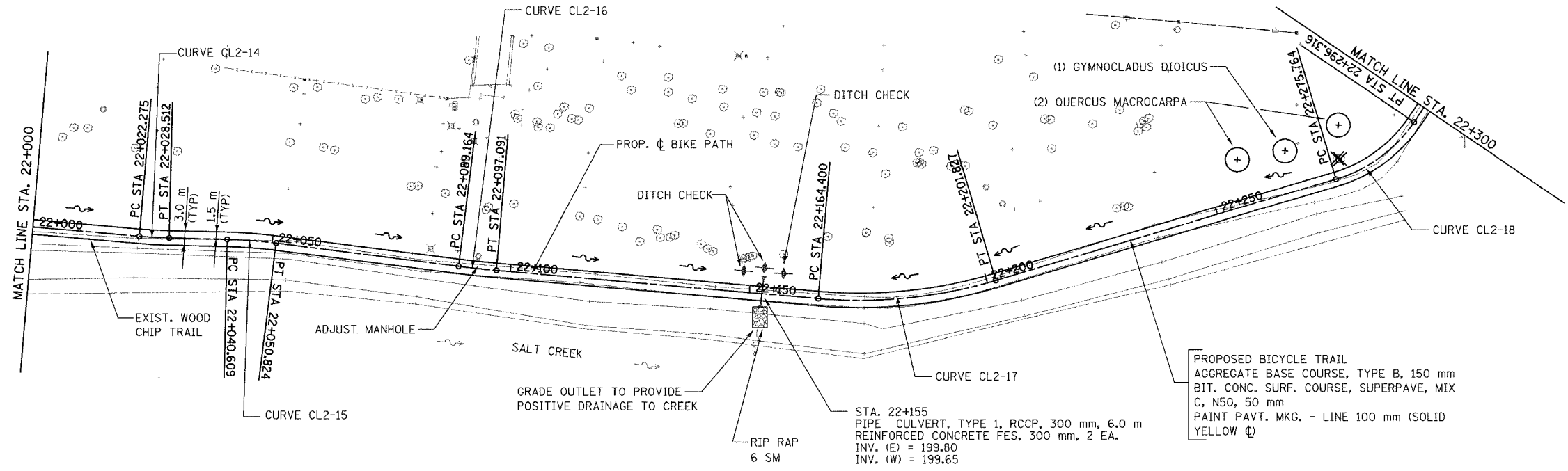


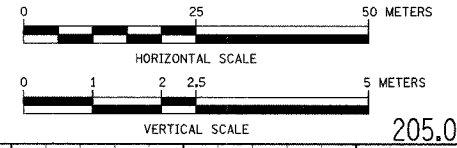
PROP. CURVE CL2-14	PROP. CURVE CL2-15	PROP. CURVE CL2-16	PROP. CURVE CL2-17	PROP. CURVE CL2-18
PI STA = 22+025.394	PI STA = 22+045.721	PI STA = 22+093.128	PI STA = 22+183.335	PI STA = 22+286.462
N = 42,176.348	N = 42,156.019	N = 42,108.866	N = 42,018.853	N = 41,920.173
E = 7,671.463	E = 7,671.398	E = 7,666.411	E = 7,660.484	E = 7,691.933
$\Delta = 3^\circ 34' 24''$ (LT)	$\Delta = 5^\circ 51' 12''$ (RT)	$\Delta = 2^\circ 16' 16''$ (LT)	$\Delta = 21^\circ 26' 37''$ (LT)	$\Delta = 39^\circ 15' 01''$ (LT)
R = 100,000 m	R = 100,000 m	R = 200,000 m	R = 100,000 m	R = 30,000 m
T = 3.119 m	T = 5.112 m	T = 3.964 m	T = 18.935 m	T = 10.697 m
L = 6.237 m	L = 10.216 m	L = 7.927 m	L = 37.426 m	L = 20.551 m
E = 0.049 m	E = 0.131 m	E = 0.039 m	E = 1.777 m	E = 1.850 m

SECTION	COUNTY	TOTAL SHEETS	SHEET NO.
02-00034-00-BT	DUPAGE	108	18
STA. TO STA.			
IDOT PROJECT NO. M-8003(216)			
SALT CREEK GREENWAY TRAIL			

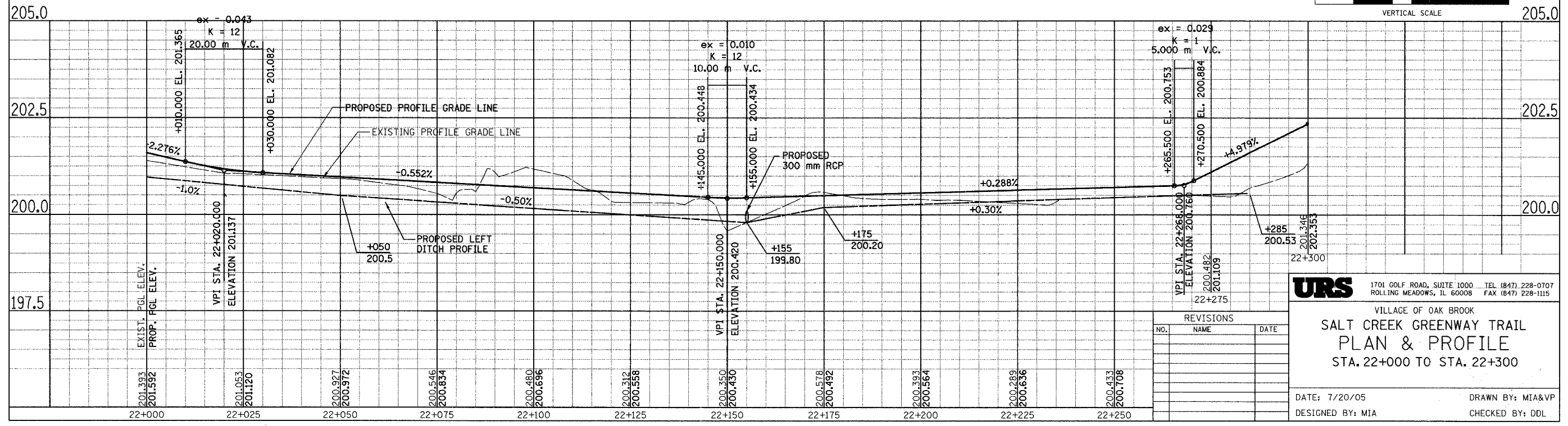
CONTRACT NO. 83714



PROPOSED BICYCLE TRAIL
 AGGREGATE BASE COURSE, TYPE B, 150 mm
 BIT. CONC. SURF. COURSE, SUPERPAVE, MIX
 C, N50, 50 mm
 PAINT PAVT. MKG. - LINE 100 mm (SOLID
 YELLOW ☐)



FOR LEGEND SEE SHEET NO. 15



REVISIONS		
NO.	NAME	DATE

URS 1701 GOLF ROAD, SUITE 1000 TEL (847) 228-0707
 ROLLING MEADOWS, IL 60008 FAX (847) 228-1115

VILLAGE OF OAK BROOK
**SALT CREEK GREENWAY TRAIL
 PLAN & PROFILE
 STA. 22+000 TO STA. 22+300**

DATE: 7/20/05 DRAWN BY: MIA&VP
 DESIGNED BY: MIA CHECKED BY: DDL