

PROP. CURVE OAK\_CL-19  
 PI STA = 24+286.458  
 N = 40,924.556  
 E = 8,782.686  
 $\Delta = 2^\circ 16' 46''$  (LT)  
 R = 300.000 m  
 T = 5.968 m  
 L = 11.935 m  
 E = 0.059 m

PROP. CURVE OAK\_CL-20  
 PI STA = 24+366.780  
 N = 40,920.124  
 E = 8,862.888  
 $\Delta = 54^\circ 48' 24''$  (RT)  
 R = 30.000 m  
 T = 15.553 m  
 L = 28.697 m  
 E = 3.792 m

PROP. PIPE CULVERT, TYPE 1, RCCP,  
 300 mm, 5.5 m, STA. +373

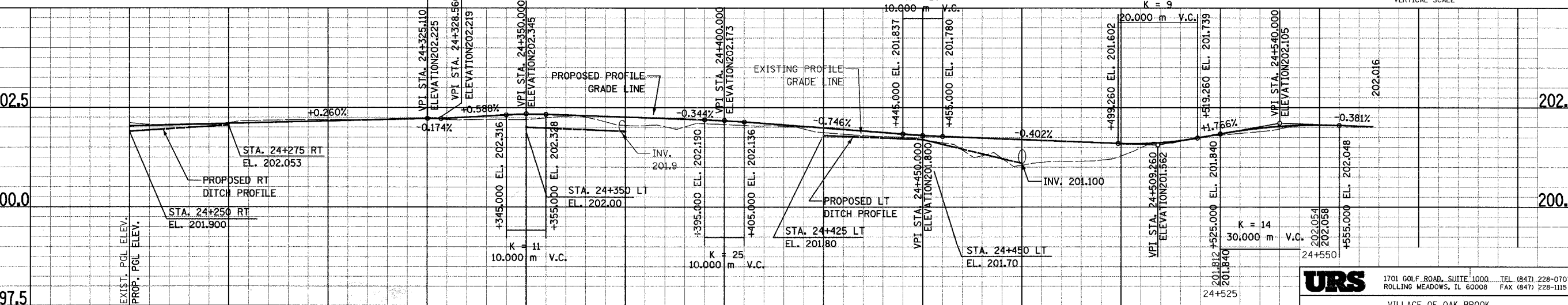
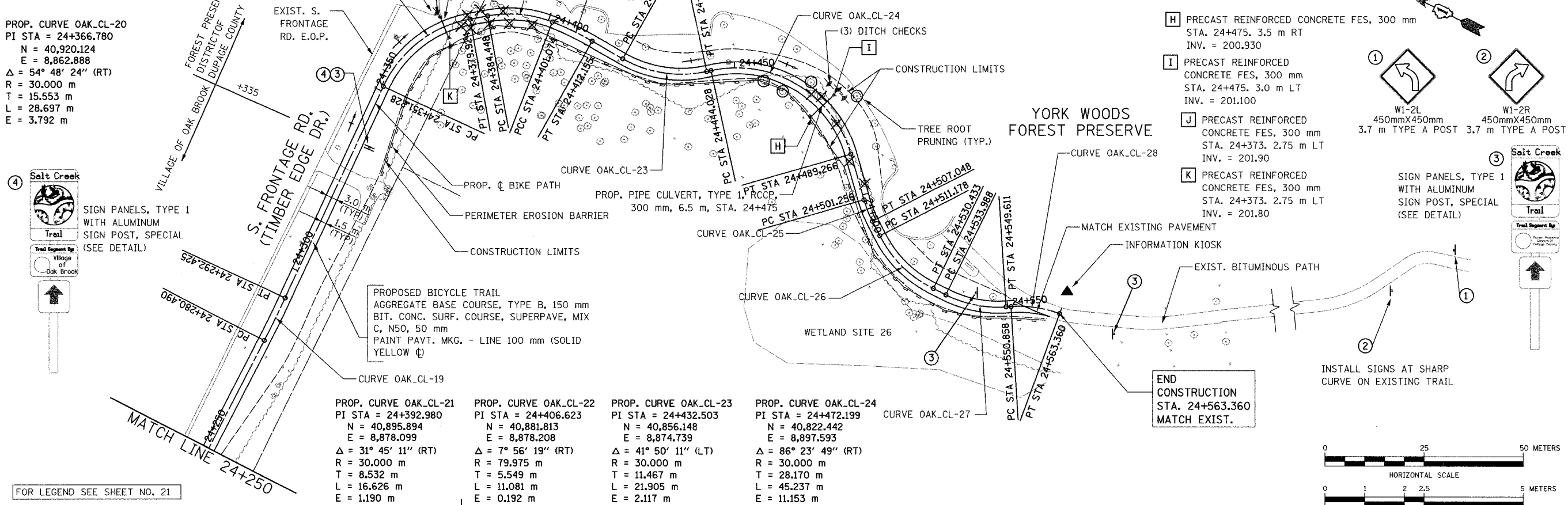
PROP. CURVE OAK\_CL-25  
 PI STA = 24+504.161  
 N = 40,796.081  
 E = 8,863.538  
 $\Delta = 11^\circ 03' 46''$  (LT)  
 R = 30.000 m  
 T = 2.905 m  
 L = 5.793 m  
 E = 0.140 m

PROP. CURVE OAK\_CL-26  
 PI STA = 24+521.150  
 N = 40,783.284  
 E = 8,852.337  
 $\Delta = 36^\circ 46' 27''$  (LT)  
 R = 30.000 m  
 T = 9.972 m  
 L = 19.255 m  
 E = 1.614 m

PROP. CURVE OAK\_CL-27  
 PI STA = 24+541.980  
 N = 40,761.828  
 E = 8,850.678  
 $\Delta = 29^\circ 50' 13''$  (LT)  
 R = 30.000 m  
 T = 7.993 m  
 L = 15.623 m  
 E = 1.046 m

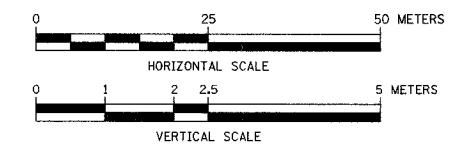
PROP. CURVE OAK\_CL-28  
 PI STA = 24+557.201  
 N = 40,747.753  
 E = 8,857.366  
 $\Delta = 23^\circ 52' 35''$  (RT)  
 R = 30.000 m  
 T = 6.343 m  
 L = 12.502 m  
 E = 0.663 m

SECTION	COUNTY	TOTAL SHEETS	SHEET NO.
02-00034-00-BT	DUPAGE	108	24
STA. TO STA.			
IDOT PROJECT NO. M-8003(216)			
SALT CREEK GREENWAY TRAIL			
CONTRACT NO. 83714			



FOR LEGEND SEE SHEET NO. 21

- H PRECAST REINFORCED CONCRETE FES, 300 mm  
 STA. 24+475. 3.5 m RT  
 INV. = 200.930
  - I PRECAST REINFORCED CONCRETE FES, 300 mm  
 STA. 24+475. 3.0 m LT  
 INV. = 201.100
  - J PRECAST REINFORCED CONCRETE FES, 300 mm  
 STA. 24+373. 2.75 m LT  
 INV. = 201.90
  - K PRECAST REINFORCED CONCRETE FES, 300 mm  
 STA. 24+373. 2.75 m LT  
 INV. = 201.80
- W1-2L 450mmX450mm 3.7 m TYPE A POST 3.7 m TYPE A POST
- W1-2R 450mmX450mm 3.7 m TYPE A POST 3.7 m TYPE A POST
- SIGN PANELS, TYPE 1 WITH ALUMINUM SIGN POST, SPECIAL (SEE DETAIL)
- INSTALL SIGNS AT SHARP CURVE ON EXISTING TRAIL
- END CONSTRUCTION STA. 24+563.360 MATCH EXIST.



**URS**  
 1701 GOLF ROAD, SUITE 1000 TEL (847) 228-0707  
 ROLLING MEADOWS, IL 60008 FAX (847) 228-1115

VILLAGE OF OAK BROOK  
**SALT CREEK GREENWAY TRAIL  
 PLAN & PROFILE**  
 STA. 24+250 TO STA. 24+563.360

REVISIONS		
NO.	NAME	DATE

DATE: 09/10/04 DRAWN BY: KLM  
 DESIGNED BY: KLM CHECKED BY: DDL