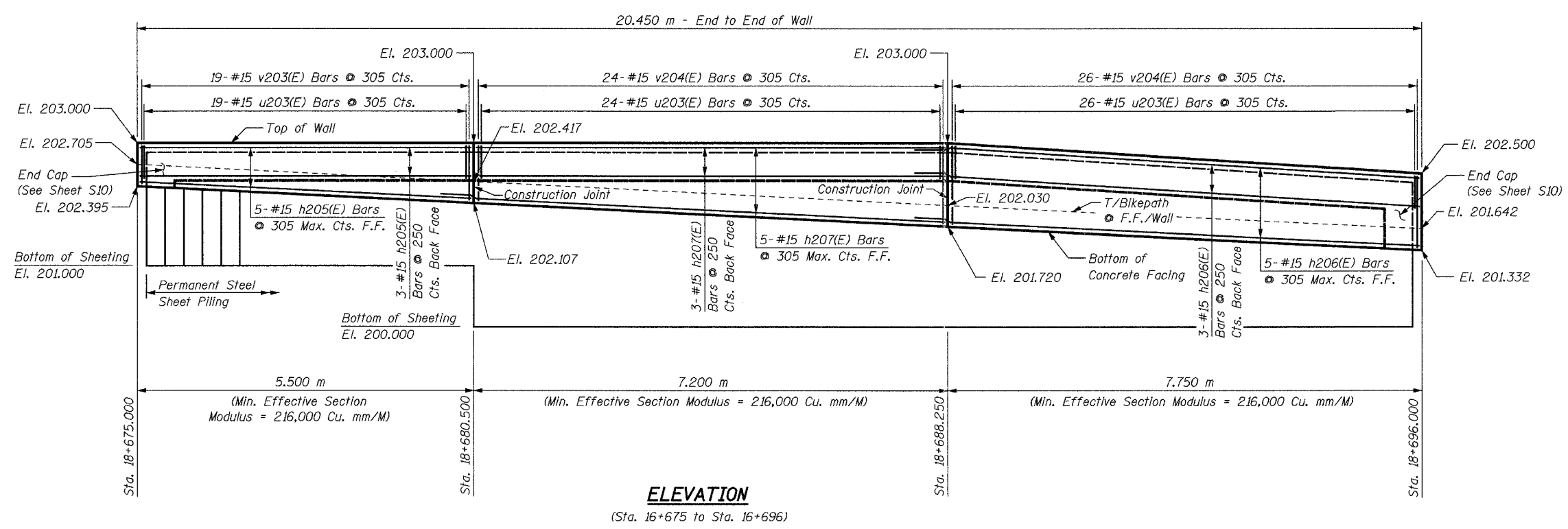


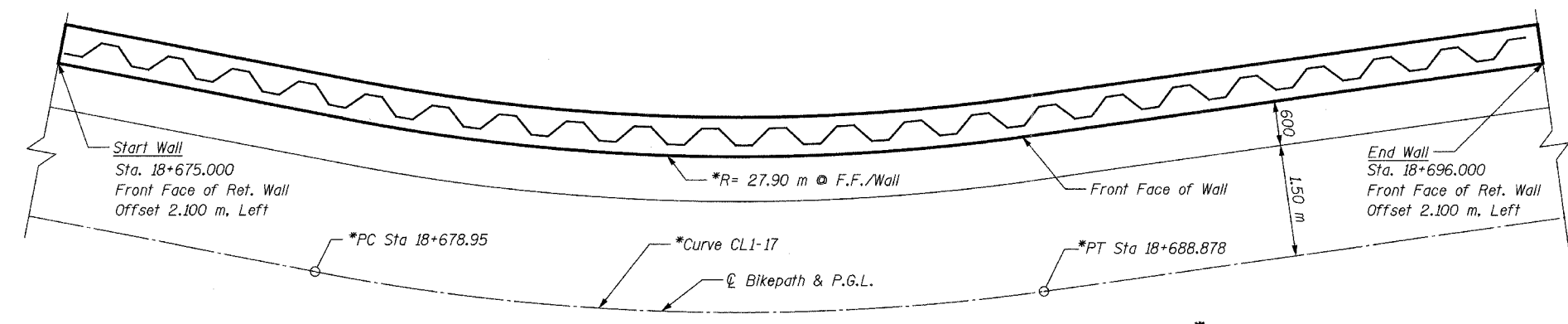
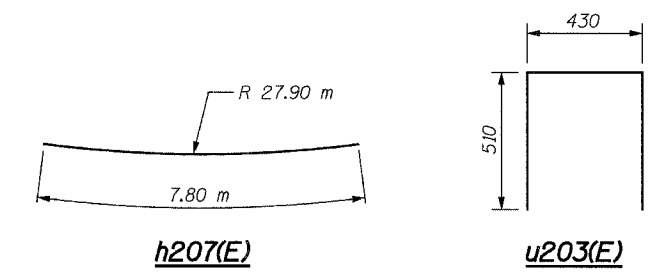
**BILL OF MATERIAL**

Bar	No.	Size	Length	Shape
h205(E)	8	#15	5.40 m	—
h206(E)	8	#15	8.40 m	—
h207(E)	8	#15	7.80 m	—
u203(E)	79	#15	1.45 m	⊏
v203(E)	21	#15	0.79 m	—
v204(E)	52	#15	1.18 m	—
Concrete Structures		Cu. M	9.0	
Reinforcement Bars, Epoxy Coated		kg	580	
Structure Excavation		Cu. M	11.5	
Permanent Steel Sheet Piling		Sq. M	51	
Pipe Handrail		Meter	21	



**ELEVATION**

(Sta. 16+675 to Sta. 16+696)



**PLAN**

(Sta. 16+675 to Sta. 16+696)  
(Reinforcement Omitted for Clarity)

**\*NOTE:**  
For horizontal curve and alignment information, see Plan & Profile drawings.

**NOTES:**

- Cut h(E) and v(E) bars as necessary in field to fit.
- Minimum lap for #15 bar - 640 mm
- All exposed edges of concrete shall have a 20 mm chamfer unless shown otherwise.
- For minimum effective section modulus properties for sheet piling sections, refer to special provision for Permanent Steel Sheet Piling.
- Work this sheet with Sheet S6 thru S10.
- Bars designated (E) shall be epoxy coated.
- All dimensions are in millimeters (mm) except as noted.
- For Typical Section thru Wall, see Sheet S10.

SHEET S7 of S33

REVISIONS		NAME	DATE	<b>URS</b> 1701 GOLF ROAD, SUITE 1000 ROLLING MEADOWS, IL 60008 TEL (847) 228-0707 FAX (847) 228-1115
NO.	DESCRIPTION			
				<b>VILLAGE OF OAKBROOK</b> <b>SALT CREEK GREENWAY TRAIL</b> <b>RET. WALL STA. 18+665 TO 18+696</b> <b>PLAN &amp; ELEVATION</b>
DATE: 06/30/05		DESIGNED BY: MDS		DRAWN BY: MDS CHECKED BY: GAT