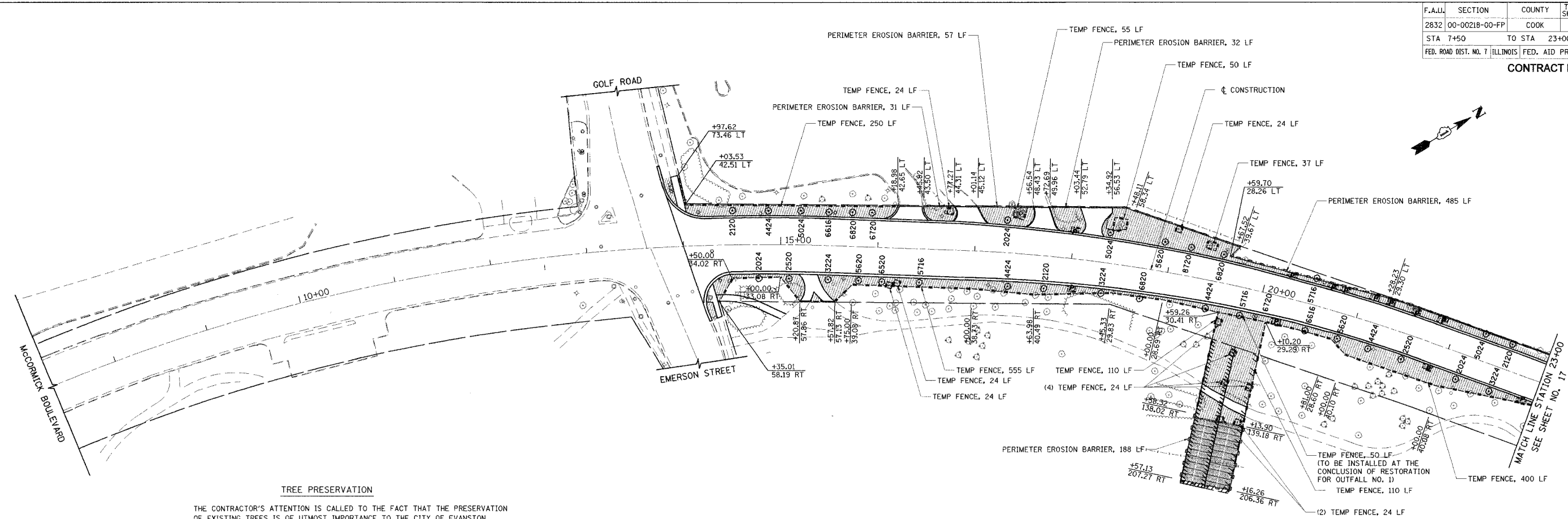


F.A.U.	SECTION	COUNTY	TOTAL SHEET NO.
2832	00-00218-00-FP	COOK	108 16
STA 7+50	TO STA 23+00		
FED. ROAD DIST. NO. 7 ILLINOIS		FED. AID PROJECT	

CONTRACT NO. 83773



TREE PRESERVATION

THE CONTRACTOR'S ATTENTION IS CALLED TO THE FACT THAT THE PRESERVATION OF EXISTING TREES IS OF UTMOST IMPORTANCE TO THE CITY OF EVANSTON. ALL TREE PROTECTION, TREE REMOVAL, PRUNING AND ROOT PRUNING SHALL BE COMPLETED BEFORE CONSTRUCTION OPERATIONS COMMENCE IN ANY AREA. AT NO TIME SHALL THE CONTRACTOR PRUNE OR REMOVE ANY TREES UNLESS SPECIFICALLY DIRECTED BY THE ENGINEER.

THE PROPOSED LOCATION OF TREES DEPICTED IN THE LANDSCAPING PLAN IS PRELIMINARY. THE FINAL LOCATION OF ALL TREE PLANTINGS MUST BE COORDINATED WITH AND APPROVED BY THE CITY OF EVANSTON BEFORE ANY MATERIALS ARE ORDERED OR BEFORE ANY TREES ARE PLANTED. ALL TREES SHALL BE PLANTED A MINIMUM DISTANCE OF FOUR (4) FEET FROM THE FACE OF CURB. NO ADDITIONAL COMPENSATION WILL BE ALLOWED FOR REVISIONS TO THE PROPOSED LOCATIONS OF THE TREES.

THE CONTRACTOR SHALL TAKE EXTRA CARE IN GRADING AND EXCAVATING NEAR TREES WHICH ARE NOT MARKED FOR REMOVAL SO AS NOT TO CAUSE INJURY TO THE ROOT SYSTEM OR TRUNKS. HAND EXCAVATION SHALL BE PERFORMED IF MAJOR ROOTS ARE PRESENT. MAJOR ROOTS OF A TREE THAT ARE TO REMAIN IN PLACE EXTENDING INTO THE EXCAVATION AREA AT AN ELEVATION THAT WOULD INTERFERE WITH ANY PORTION OF THE PLANNED CONSTRUCTION SHALL BE SEVERED AT A POINT IMMEDIATELY OUTSIDE OF THE EXCAVATION AREA IN A MANNER THAT WILL CAUSE THE LEAST AMOUNT OF SYSTEMIC TO THE REMAINING TREE STRUCTURE. THE EXPENSE OF ANY REQUIRED HAND EXCAVATION AND/OR THE CUTTING OF MAJOR TREE ROOTS, AS DESCRIBED ABOVE, SHALL BE CONSIDERED INCIDENTAL TO THE CONTRACT LINE ITEM BEING REMOVED OR INSTALLED AT THAT LOCATION.

TREE LEGEND

IDOT CODE	TREE CODE	SCIENTIFIC NAME	COMMON NAME	SIZE/ROOT
A2002024	2024	AESCULUS GLABRA	OHIO BUCKEYE	3" CALIPER/B&B
A2002120	2120	AESCULUS HIPPOCASTANUM	COMMON HORSECHESTNUT	2 1/2" CALIPER/B&B
A2002520	2520	CARPINUS CAROLINIANA	AMERICAN HORNBEAM	2 1/4" CALIPER/B&B
A2003224	3224	CORYLUS COLURNA	TURKISH FILBERT	3" CALIPER/B&B
A2004424	4424	GINKO BILOBA	GINKGO	3" CALIPER/B&B
A2005024	5024	GYMNOCLADUS DIOICUS	KENTUCKYCOFFEETREE	3" CALIPER/B&B
A2005620	5620	OSTRYA VIRGINIANA	AMERICAN HOPHORNBEAM	2 1/2" CALIPER/B&B
A2005716	5716	PHELLDENDRON AMURENSE	AMUR CORKTREE	2" CALIPER/B&B
A2006520	6520	QUERCUS BICOLOR	SWAMP WHITE OAK	2 1/4" CALIPER /B&B
A2006616	6616	QUERCUS IMBRICARIA	SHINGLE OAK	2" CALIPER/B&B
A2006720	6720	QUERCUS MACROCARPA	BUR OAK	2 1/2" CALIPER /B&B
A2006820	6820	QUERCUS MUEHLENGERII	CHINKAPIN OAK	2 1/2" CALIPER/B&B
A2018720	8720	ULMUS CARPINIFOLIA "MORTON"	ACCOLADE ELM	2 1/2" CALIPER /B&B
A2007628	7628	TAXODIUM DISTICHUM	COMMON BALD CYPRESS	3 1/2" CALIPER/B&B
A2006070	6070	SYRINGA PEKINENSIS	PEKING LILAC	8' HT CLUMP/B&B
A2010066	0066	CHIONANTHUS VIRGINICUS	WHITE FRINGETREE	6' HT CLUMP/B&B
A2002166	2166	AESCULUS PAVIA	RED BUCKEYE	6' HT CLUMP/B&B
A2005520	5520	NYSSA SYLVATICA	BLACK TUPELO	2 1/2" CALIPER/B&B

LANDSCAPING LEGEND

- [Hatched Box] SOD - SALT TOLERANT TOPSOIL FURNISH AND PLACE, 4" NITROGEN, PHOSPHORUS, AND POTASSIUM FERTILIZER
- [Dotted Box] SEEDING - CLASS 4 NATIVE GRASS EROSION CONTROL BLANKET COMPOST FURNISH AND PLACE, 4"

EROSION CONTROL LEGEND

- [Dashed Line] PERIMETER EROSION BARRIER
- [Dotted Line] TEMPORARY FENCE
- [P in Circle] TREE TRUNK PROTECTION, PRUNING, AND ROOT PRUNING

PERENNIAL PLANTS, PRAIRIE TYPE (MATERIAL ONLY)

IDOT CODE	QUANTITY (1 UNIT = 100 PLUGS)	SCIENTIFIC NAME	COMMON NAME	LOCATION
K1004469	2 UNITS	ANDROPOGON GERNADI	BIG BLUE STEM	20+00, 140'-200' RT
K1004469	2 UNITS	SORGHASTRUM NOTONS	INDIAN GRASS	20+00, 140'-200' RT
K1004469	2 UNITS	PANICUM VIRGATUM	SWITCH GRASS	20+00, 140'-200' RT

REVISIONS

NAME	DATE
CEC/PAS	5/23/05

ILLINOIS DEPARTMENT OF TRANSPORTATION

LANDSCAPING AND EROSION CONTROL

MCCORMICK BOULEVARD
STATION 7+50 TO STATION 23+00

DATE 9/03/04
DRAWN BY GEW
CHECKED BY PAS

