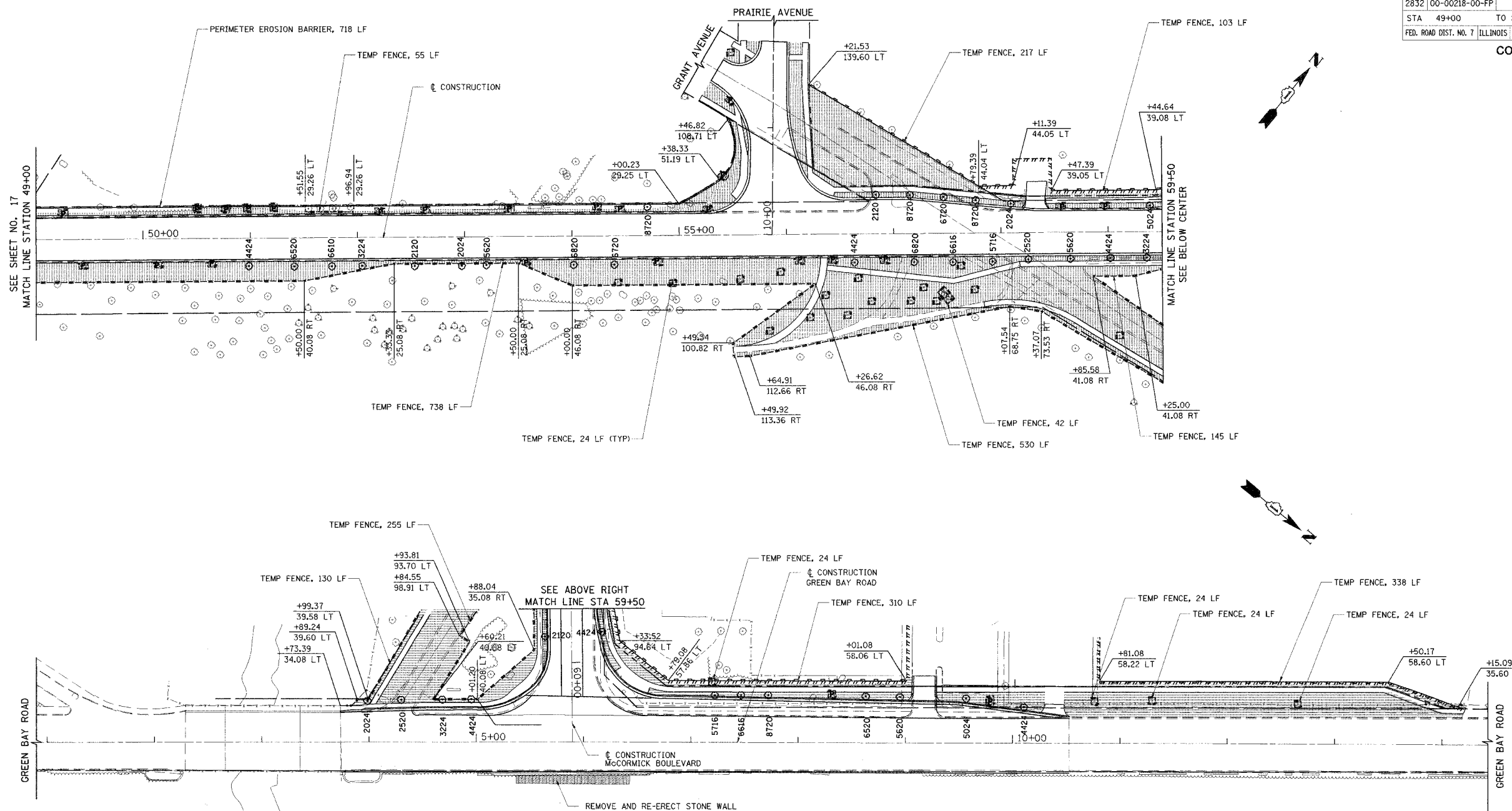


F.A.U.	SECTION	COUNTY	TOTAL SHEETS	SHEET NO.
2832	00-00218-00-FP	COOK	108	18
STA 49+00	TO STA 60+75			
FED. ROAD DIST. NO. 7 ILLINOIS FED. AID PROJECT				

CONTRACT NO. 83773



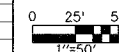
TREE LEGEND

IDOT CODE	TREE CODE	SCIENTIFIC NAME	COMMON NAME	SIZE/ROOT
A2002024	2024	AESCULUS GLABRA	OHIO BUCKEYE	3" CALIPER/B&B
A2002120	2120	AESCULUS HIPPOCASTANUM	COMMON HORSECHESTNUT	2 1/2" CALIPER/B&B
A2002520	2520	CARPINUS CAROLINIANA	AMERICAN HORNBEAM	2 1/2" CALIPER/B&B
A2003224	3224	CORYLUS COLURNA	TURKISH FILBERT	3" CALIPER/B&B
A2004424	4424	GINKO BILOBA	GINKGO	3" CALIPER/B&B
A2005024	5024	GYMNOCLADUS DIOICUS	KENTUCKYCOFFEETREE	3" CALIPER/B&B
A2005620	5620	OSTRYA VIRGINIANA	AMERICAN HOPHORNBEAM	2 1/2" CALIPER/B&B
A2005716	5716	PHELLODENDRON AMURENSE	AMUR CORKTREE	2" CALIPER/B&B
A2006520	6520	QUERCUS BICOLOR	SWAMP WHITE OAK	2 1/2" CALIPER /B&B
A2006616	6616	QUERCUS IMBRICARIA	SHINGLE OAK	2" CALIPER/B&B
A2006720	6720	QUERCUS MACROCARPA	BUR OAK	2 1/2" CALIPER /B&B
A2006820	6820	QUERCUS MUEHLENGERII	CHINKAPIN OAK	2 1/2" CALIPER/B&B
A2018720	8720	ULMUS CARPINIFOLIA "MORTON"	ACCOLADE ELM	2 1/2" CALIPER /B&B
A2007628	7628	TAXODIUM DISTICHUM	COMMON BALD CYPRESS	3 1/2" CALIPER/B&B
A2006070	6070	SYRINGA PEKINENSIS	PEKING LILAC	8' HT CLUMP/B&B
A2010066	0066	CHIONANTHUS VIRGINICUS	WHITE FRINGETREE	6' HT CLUMP/B&B
A2002166	2166	AESCULUS PAVIA	RED BUCKEYE	6' HT CLUMP/B&B
A2005520	5520	NYSSA SYLVATICA	BLACK TUPELO	2 1/2" CALIPER/B&B

NOTE:
SEE SHEET NO. 16 FOR NOTES AND LEGEND

REVISIONS	
NAME	DATE
CEC/PAS	5/23/05

ILLINOIS DEPARTMENT OF TRANSPORTATION
**LANDSCAPING
AND EROSION CONTROL**
McCORMICK BOULEVARD
STATION 49+00 TO STATION 60+75
AND GREEN BAY ROAD



DATE 9/03/04
DRAWN BY GEM
CHECKED BY PAS