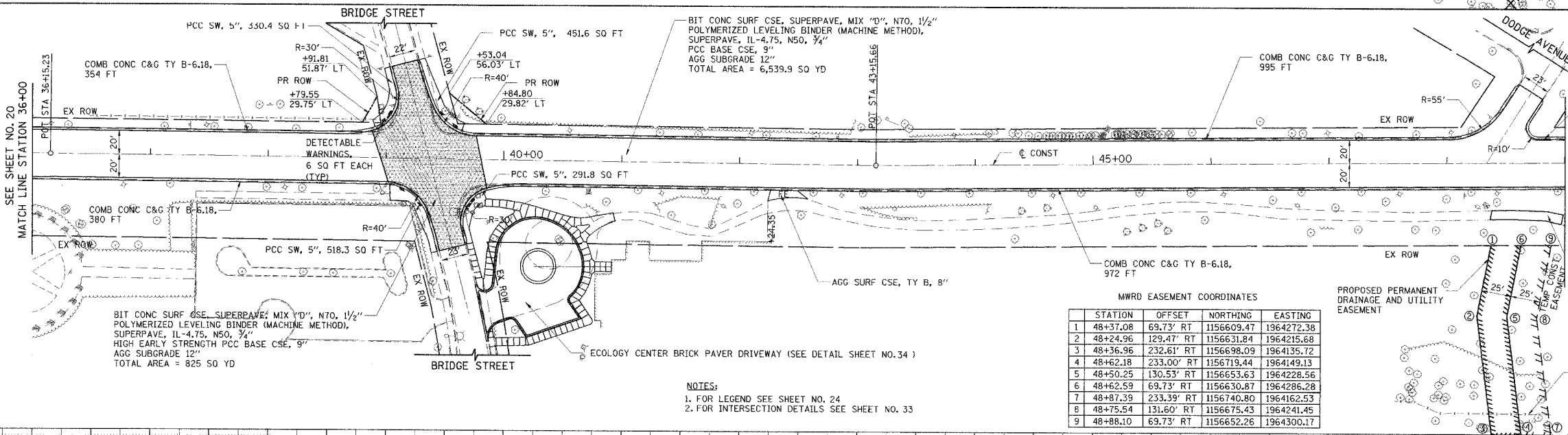
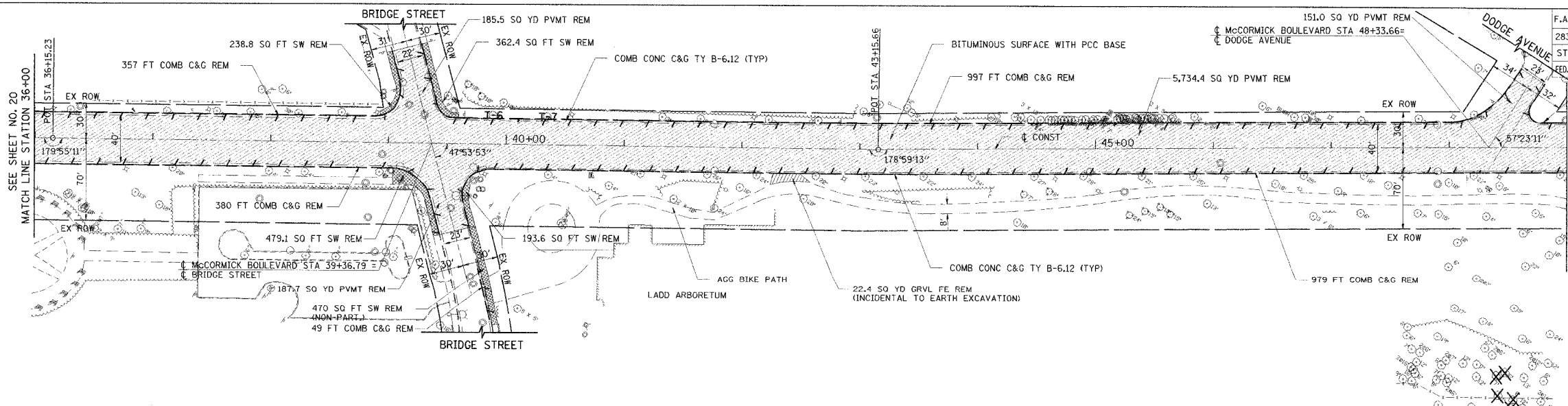


F.A.U.	SECTION	COUNTY	TOTAL SHEETS	SHEET NO.
2832	00-00218-00-FP	COOK	108	21
STA 36+00	TO STA 49+00			
FED. ROAD DIST. NO. 7	ILLINOIS FED. AID PROJECT			

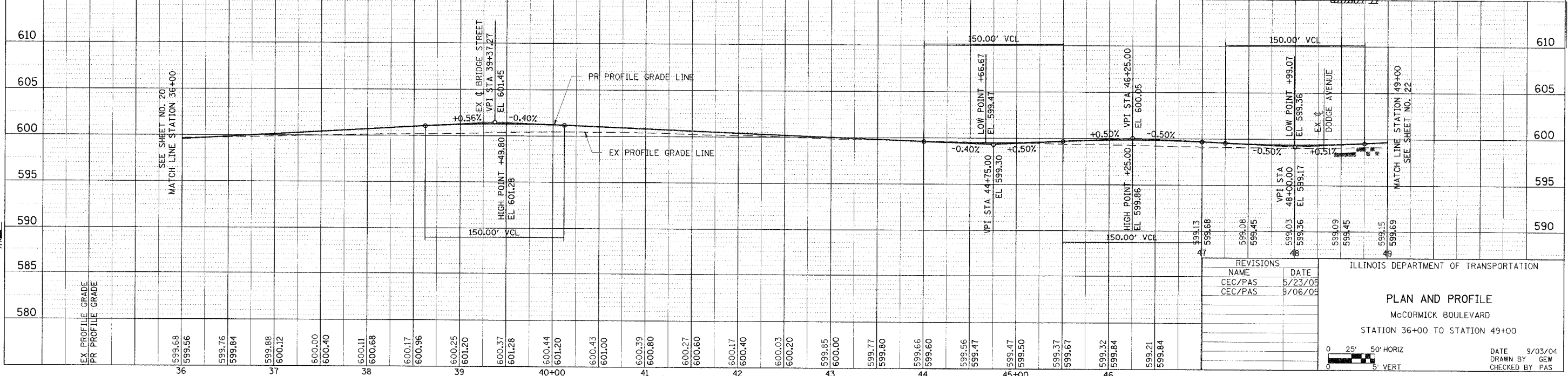
CONTRACT NO. 83773



MWRD EASEMENT COORDINATES

STATION	OFFSET	NORTHING	EASTING	
1	48+37.08	69.73' RT	1156609.47	1964272.38
2	48+24.96	129.47' RT	1156631.84	1964215.68
3	48+36.96	232.61' RT	1156698.09	1964135.72
4	48+62.18	233.00' RT	1156719.44	1964149.13
5	48+50.25	130.53' RT	1156653.63	1964228.56
6	48+62.59	69.73' RT	1156630.87	1964286.28
7	48+87.39	233.39' RT	1156740.80	1964162.53
8	48+75.54	131.60' RT	1156675.43	1964241.45
9	48+88.10	69.73' RT	1156652.26	1964300.17

NOTES:
 1. FOR LEGEND SEE SHEET NO. 24
 2. FOR INTERSECTION DETAILS SEE SHEET NO. 33



REVISIONS

NAME	DATE
CEC/PAS	5/23/09
CEC/PAS	9/06/09

ILLINOIS DEPARTMENT OF TRANSPORTATION

PLAN AND PROFILE
 McCormick Boulevard
 STATION 36+00 TO STATION 49+00

DATE 9/03/04
 DRAWN BY GEW
 CHECKED BY PAS

TRANS SYSTEMS CORPORATION