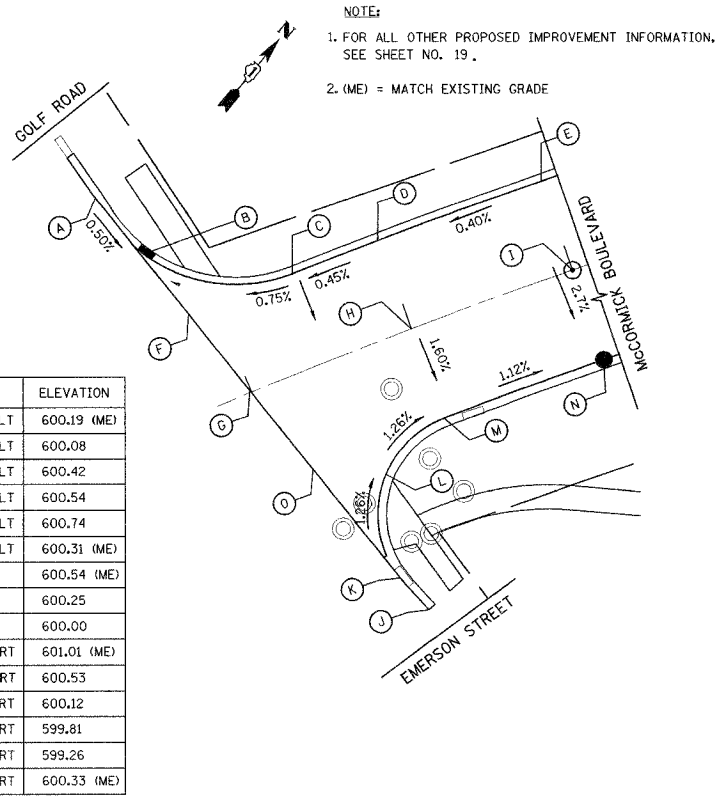


F.A.U.	SECTION	COUNTY	TOTAL SHEETS	SHEET NO.
2832	00-00218-00-FP	COOK	108	33
STA	TO STA			
FED. ROAD DIST. NO. 7		ILLINOIS	FED. AID PROJECT	

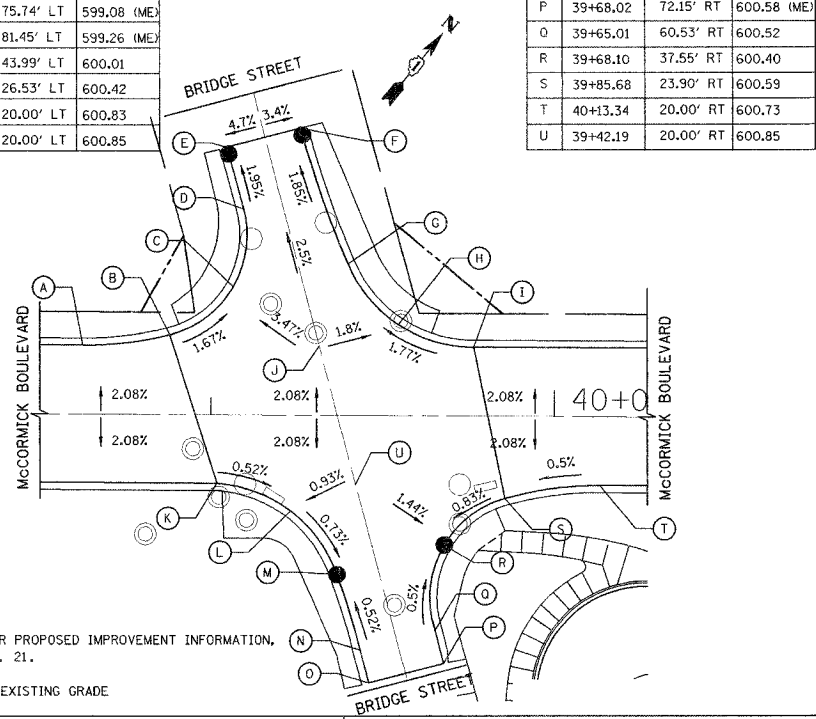
CONTRACT NO. 83773



STATION	OFFSET	ELEVATION
A	13+79.89	69.44' LT 600.19 (ME)
B	13+86.63	48.80' LT 600.08
C	14+23.71	27.50' LT 600.42
D	14+50.00	27.50' LT 600.54
E	15+00.00	27.50' LT 600.74
F	13+91.73	27.50' LT 600.31 (ME)
G	14+00.00	0.00' 600.54 (ME)
H	14+50.00	0.00' 600.25
I	15+00.00	0.00' 600.00
J	14+24.70	78.06' RT 601.01 (ME)
K	14+20.38	66.80' RT 600.53
L	14+27.60	36.73' RT 600.12
M	14+50.00	27.50' RT 599.81
N	15+00.00	27.50' RT 599.26
O	14+08.08	27.50' RT 600.33 (ME)

NOTE:
 1. FOR ALL OTHER PROPOSED IMPROVEMENT INFORMATION, SEE SHEET NO. 19.
 2. (ME) = MATCH EXISTING GRADE

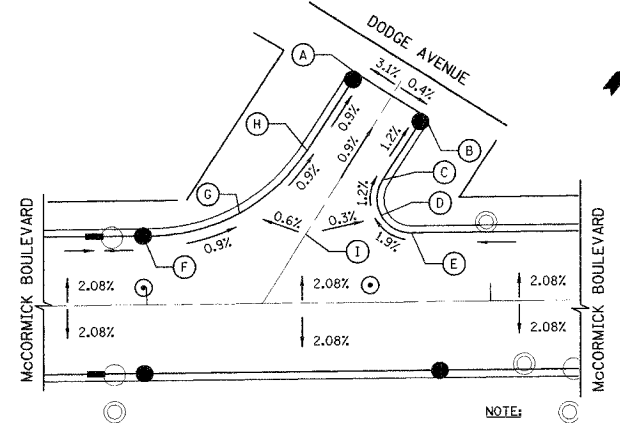
STATION	OFFSET	ELEVATION
A	38+62.62	20.00' LT 600.61
B	38+87.82	23.23' LT 600.19
C	39+06.31	37.37' LT 599.79
D	39+09.29	59.82' LT 599.39
E	39+04.77	75.74' LT 599.08 (ME)
F	39+26.22	81.45' LT 599.26 (ME)
G	39+39.70	43.99' LT 600.01
H	39+54.45	26.53' LT 600.42
I	39+76.35	20.00' LT 600.83
J	39+31.48	20.00' LT 600.85



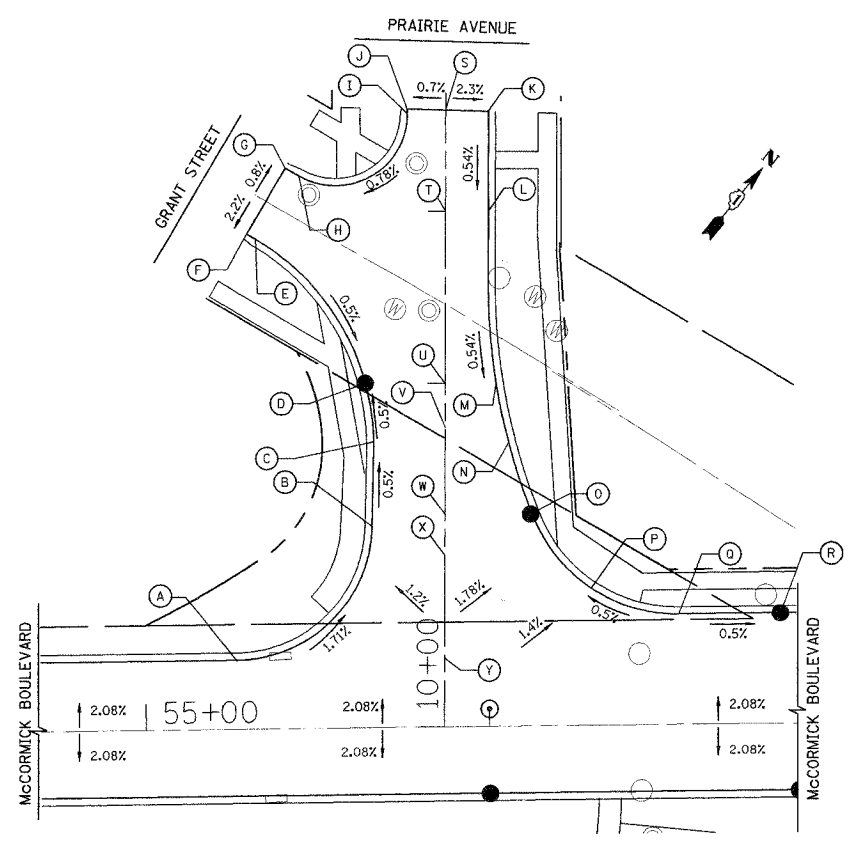
STATION	OFFSET	ELEVATION
K	39+01.87	20.00' RT 600.78
L	39+23.31	27.93' RT 600.66
M	39+36.90	46.31' RT 600.49
N	39+43.35	66.29' RT 600.61
O	39+46.36	77.91' RT 600.66 (ME)
P	39+68.02	72.15' RT 600.58 (ME)
Q	39+65.01	60.53' RT 600.52
R	39+68.10	37.55' RT 600.40
S	39+85.68	23.90' RT 600.59
T	40+13.34	20.00' RT 600.73
U	39+42.19	20.00' RT 600.85

NOTE:
 1. FOR ALL OTHER PROPOSED IMPROVEMENT INFORMATION, SEE SHEET NO. 21.
 2. (ME) = MATCH EXISTING GRADE

STATION	OFFSET	ELEVATION
A	48+61.91	66.51' LT 598.21 (ME)
B	48+81.32	54.09' LT 598.54 (ME)
C	48+68.96	35.55' LT 598.82
D	48+68.46	25.28' LT 598.95
E	48+77.28	20.00' LT 599.15
F	48+01.40	20.00' LT 598.94
G	48+27.31	26.48' LT 598.70
H	48+47.11	44.40' LT 598.46
I	48+46.46	20.00' LT 599.02



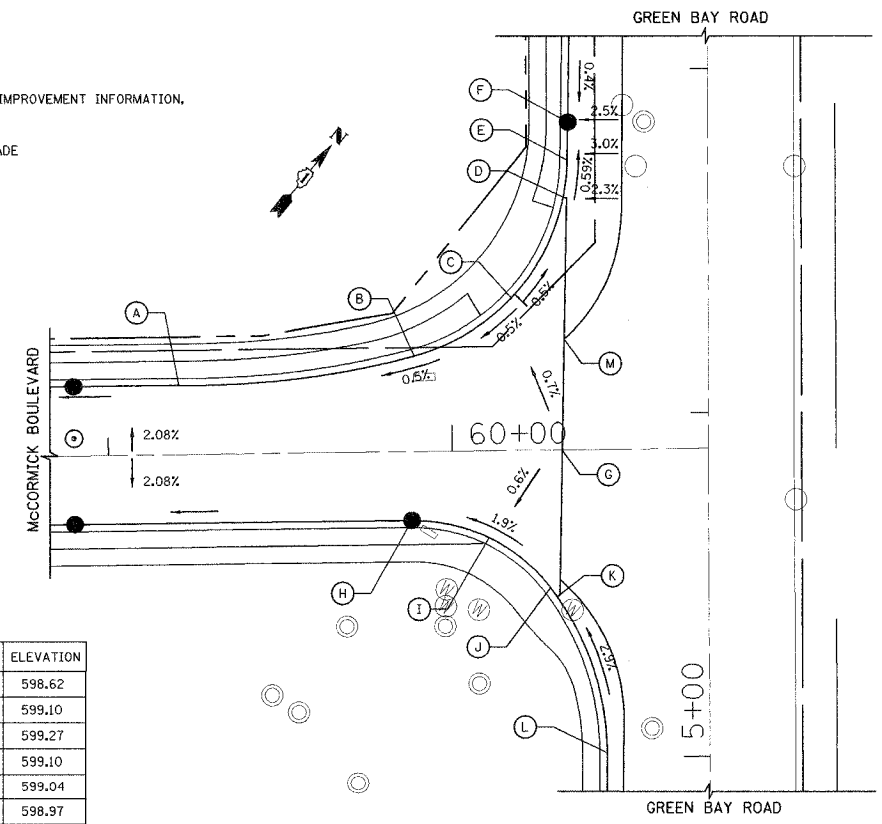
NOTE:
 1. FOR ALL OTHER PROPOSED IMPROVEMENT INFORMATION, SEE SHEET NO. 21.
 2. (ME) = MATCH EXISTING GRADE



STATION	OFFSET	ELEVATION
A	55+26.48	20.00' LT 599.15
B	55+66.45	58.65' LT 598.10
C	55+67.18	80.34' LT 597.99
D	55+64.97	100.33' LT 597.89
E	55+33.47	142.58' LT 598.18
F	55+30.91	144.13' LT 598.19 (ME)
G	55+42.45	163.19' LT 598.34 (ME)
H	55+46.37	160.83' LT 598.35
I	55+78.21	178.61' LT 598.80
J	55+78.22	179.81' LT 598.81 (ME)
K	56+01.88	178.88' LT 598.60 (ME)
L	56+01.46	149.80' LT 598.44
M	56+03.09	99.77' LT 598.17
N	56+06.49	82.62' LT 598.06
O	56+12.68	61.68' LT 597.95
P	56+30.06	39.83' LT 598.10
Q	56+55.42	32.00' LT 598.25
R	56+85.00	32.00' LT 598.10
S	55+89.39	179.37' LT 598.89
T	55+88.96	150.00' LT 598.74
U	55+88.23	100.00' LT 598.52
V	55+88.04	87.22' LT 598.36
W	55+87.68	62.00' LT 598.50
X	55+87.50	50.00' LT 598.61
Y	55+87.07	20.00' LT 598.84

NOTE:
 1. FOR ALL OTHER PROPOSED IMPROVEMENT INFORMATION, SEE SHEET NO. 22 AND 24.
 2. FOR GENERAL PROFILE INFORMATION ALONG GRANT STREET/PRAIRIE AVENUE, SEE SHEET NO. 24.
 3. (ME) = MATCH EXISTING GRADE

NOTE:
 1. FOR ALL OTHER PROPOSED IMPROVEMENT INFORMATION, SEE SHEET NO. 23.
 2. (ME) = MATCH EXISTING GRADE



STATION	OFFSET	ELEVATION
A	59+20.70	20.00' LT 598.62
B	59+89.36	27.75' LT 599.10
C	60+17.73	44.32' LT 599.27
D	60+33.14	73.40' LT 599.10
E	60+34.33	84.18' LT 599.04
F	60+34.75	95.29' LT 598.97
G	60+32.05	0.00' LT 599.59
H	59+88.04	20.00' RT 598.95
I	60+10.47	25.31' RT 599.39
J	60+28.13	40.12' RT 599.83
K	60+30.03	42.78' RT 599.90
L	60+43.98	88.39' RT 601.30
M	60+32.96	32.18' LT 599.41

REVISIONS	
NAME	DATE
PAS/CEC	5/23/05

ILLINOIS DEPARTMENT OF TRANSPORTATION
INTERSECTION DETAILS
 McCormick Boulevard
 SCALE: NTS
 DATE 9/03/04
 DRAWN BY GEW
 CHECKED BY PAS

TYPICAL.SHT
 300 PERIMETER DRIVE
 SUITE 1025
 SCHMIDT, L. 60173
TRANS SYSTEMS CORPORATION