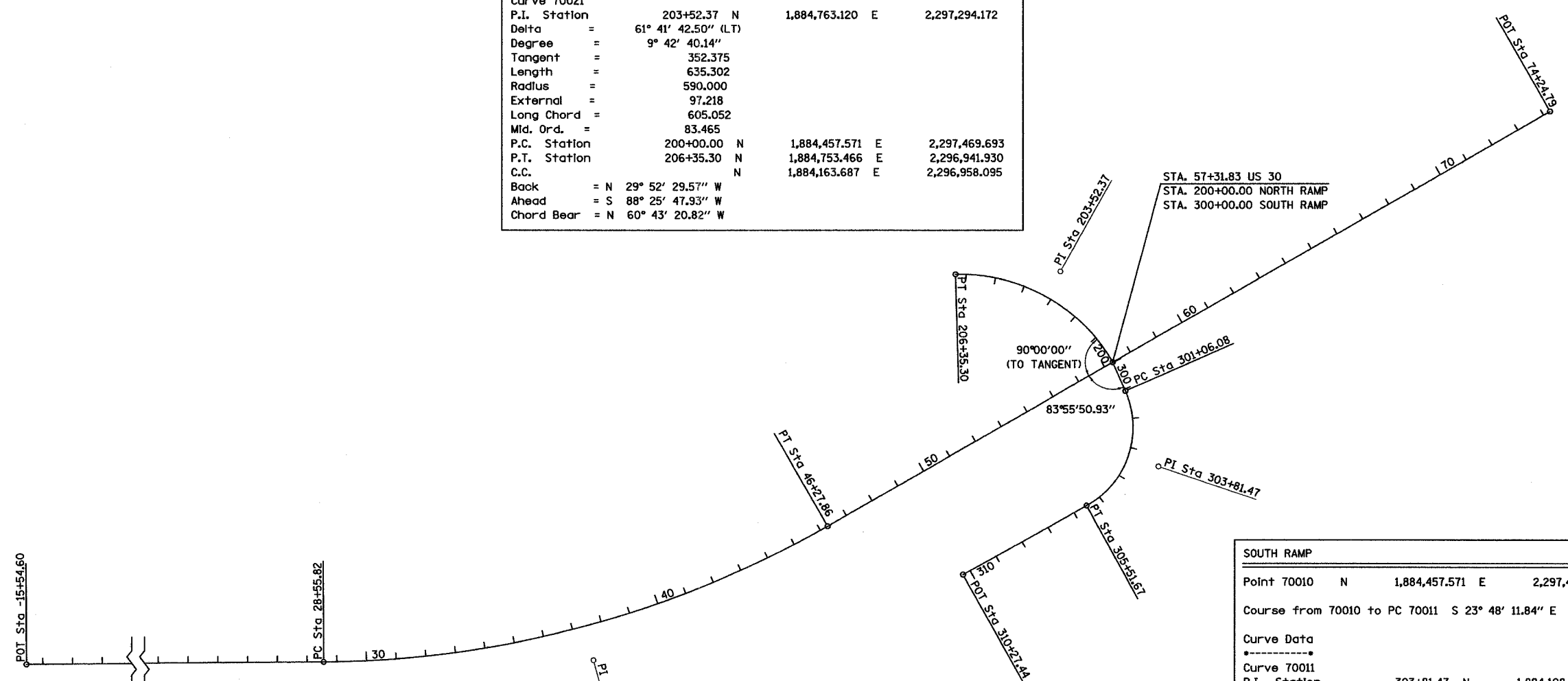


F.A.P. RTE.	SECTION	COUNTY	TOTAL SHEETS	SHEET NO.
309	7VBR-1&7HR	WHITESIDE	146	11
STA.		TO STA.		
FED. ROAD DIST. NO.		ILLINOIS	FED. AID PROJECT	
CONTRACT #84883				

NORTH RAMP				
Curve Data				

Curve 70021				
P.I. Station	203+52.37	N	1,884,763.120	E
Delta =	61° 41' 42.50"	(LT)		
Degree =	9° 42' 40.14"			
Tangent =	352.375			
Length =	635.302			
Radius =	590.000			
External =	97.218			
Long Chord =	605.052			
Mld. Ord. =	83.465			
P.C. Station	200+00.00	N	1,884,457.571	E
P.T. Station	206+35.30	N	1,884,753.466	E
C.C.		N	1,884,163.687	E
Back =	N 29° 52' 29.57"	W		
Ahead =	S 88° 25' 47.93"	W		
Chord Bear =	N 60° 43' 20.82"	W		



US 30				
Point 112	N	1,883,421.380	E	2,290,410.279
Sta				-15+54.60
Course from 112 to PC 70000 N 89° 37' 24.22" E Dist 4,410.418				
Curve Data				

Curve 70000				
P.I. Station	37+61.94	N	1,883,456.325	E
Delta =	29° 29' 53.79"	(LT)		
Degree =	1° 39' 52.74"			
Tangent =	906.124			
Length =	1,772.040			
Radius =	3,441.910			
External =	117.276			
Long Chord =	1,752.534			
Mld. Ord. =	113.412			
P.C. Station	28+55.82	N	1,883,450.369	E
P.T. Station	46+27.86	N	1,883,907.673	E
C.C.		N	1,886,892.205	E
Back =	N 89° 37' 24.22"	E		
Ahead =	N 60° 07' 30.43"	E		
Chord Bear =	N 74° 52' 27.32"	E		
Course from PT 70000 to 115 N 60° 07' 30.43" E Dist 2,796.938				
Point 115	N	1,885,300.849	E	2,298,937.688
Sta				74+24.79

SOUTH RAMP				
Point 70010	N	1,884,457.571	E	2,297,469.693
Sta				300+00.00
Course from 70010 to PC 70011 S 23° 48' 11.84" E Dist 106.081				
Curve Data				

Curve 70011				
P.I. Station	303+81.47	N	1,884,108.559	E
Delta =	85° 06' 03.57"	(RT)		
Degree =	19° 05' 54.94"			
Tangent =	275.386			
Length =	445.588			
Radius =	300.000			
External =	107.232			
Long Chord =	405.744			
Mld. Ord. =	78.996			
P.C. Station	301+06.08	N	1,884,360.513	E
P.T. Station	305+51.67	N	1,883,976.288	E
C.C.		N	1,884,239.418	E
Back =	S 23° 48' 23.84"	E		
Ahead =	S 61° 17' 39.73"	W		
Chord Bear =	S 18° 44' 37.95"	W		
Course from PT 70011 to 3111 S 60° 42' 57.91" W Dist 475.768				
Point 3111	N	1,883,743.572	E	2,296,967.158
Sta				310+27.44

REVISIONS	
NAME	DATE

ILLINOIS DEPARTMENT OF TRANSPORTATION

HORIZONTAL CONTROL

SCALE: VERT. _____
HORIZ. _____

DATE 08/25/2005

DRAWN BY SWEET
CHECKED BY ZELINSKAS