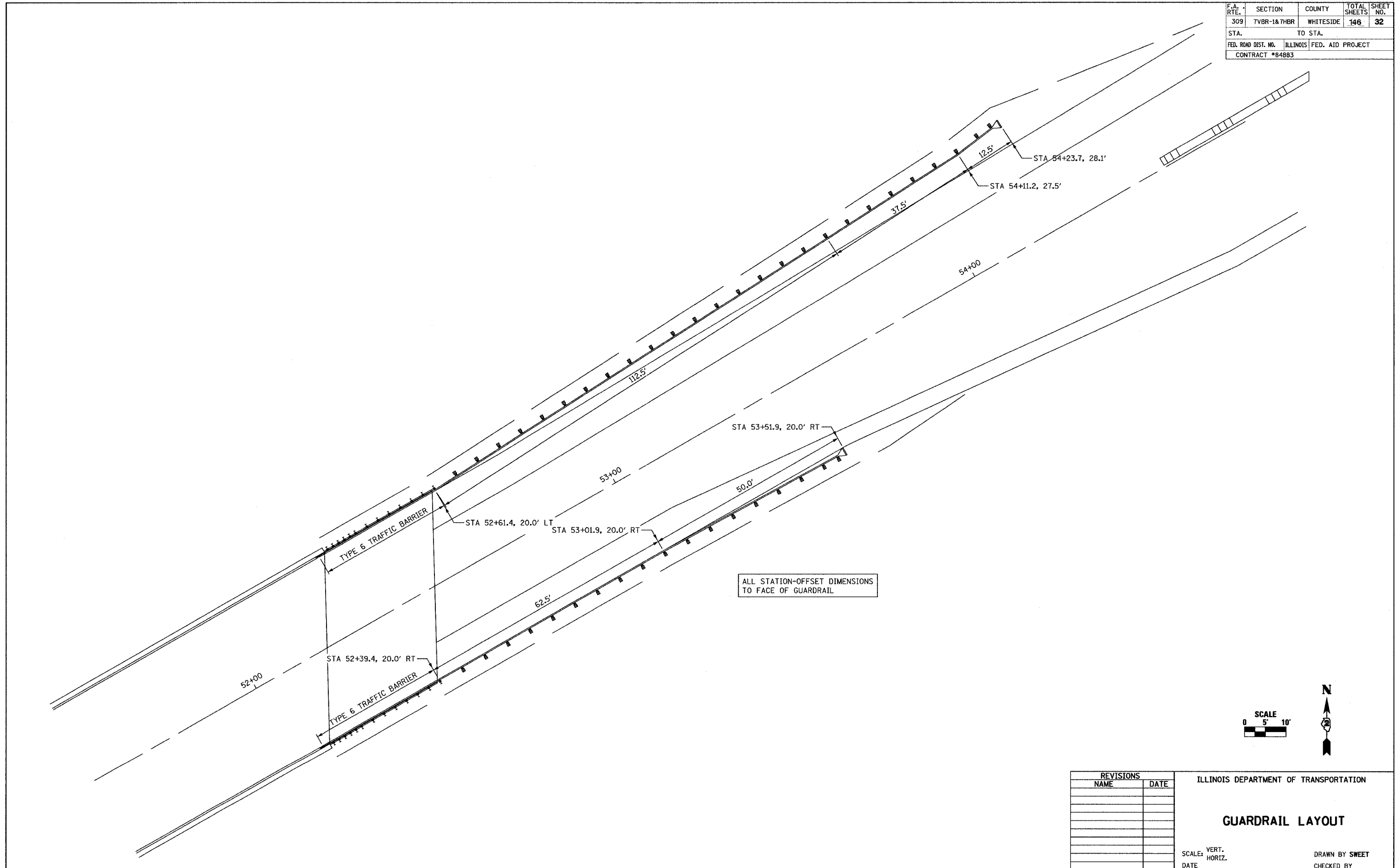
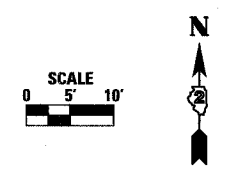


F.A. RTE.	SECTION	COUNTY	TOTAL SHEETS	SHEET NO.
309	TVBR-1&7HR	WHITESIDE	146	32
STA.		TO STA.		
FED. ROAD DIST. NO.		ILLINOIS	FED. AID PROJECT	
CONTRACT #84883				



ALL STATION-OFFSET DIMENSIONS TO FACE OF GUARDRAIL



REVISIONS	
NAME	DATE

ILLINOIS DEPARTMENT OF TRANSPORTATION

**GUARDRAIL LAYOUT**

SCALE: VERT. HORIZ.  
DATE

DRAWN BY SWEET  
CHECKED BY