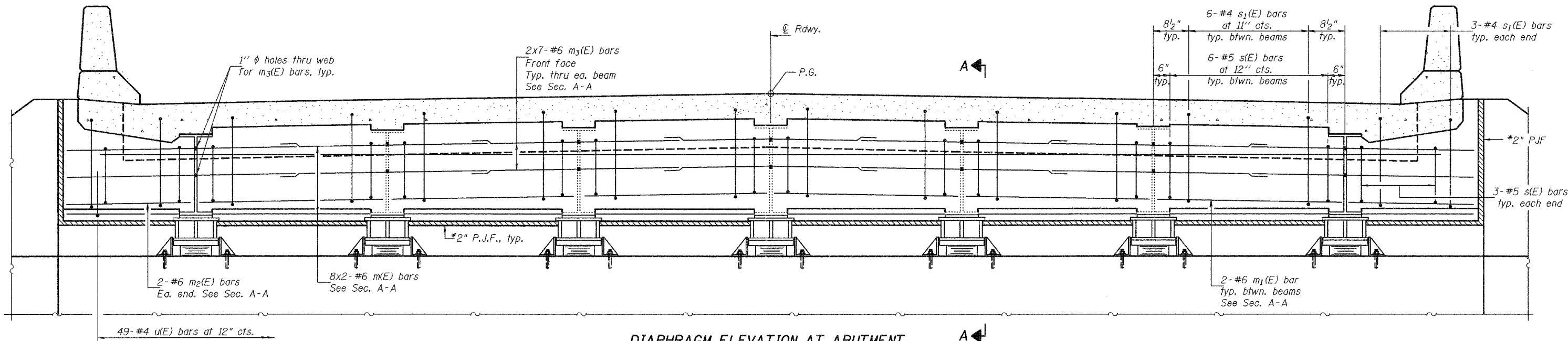


STATE OF ILLINOIS  
DEPARTMENT OF TRANSPORTATION

ROUTE NO.	SECTION	COUNTY	TOTAL SHEETS	SHEET NO.	SHEET NO.
F.A.P. 309	7HBR-1	WHITESIDE	46	44	23 SHEETS
FED. ROAD DIST. NO. 7	ILLINOIS	FED. AID PROJECT			

Contract #84883



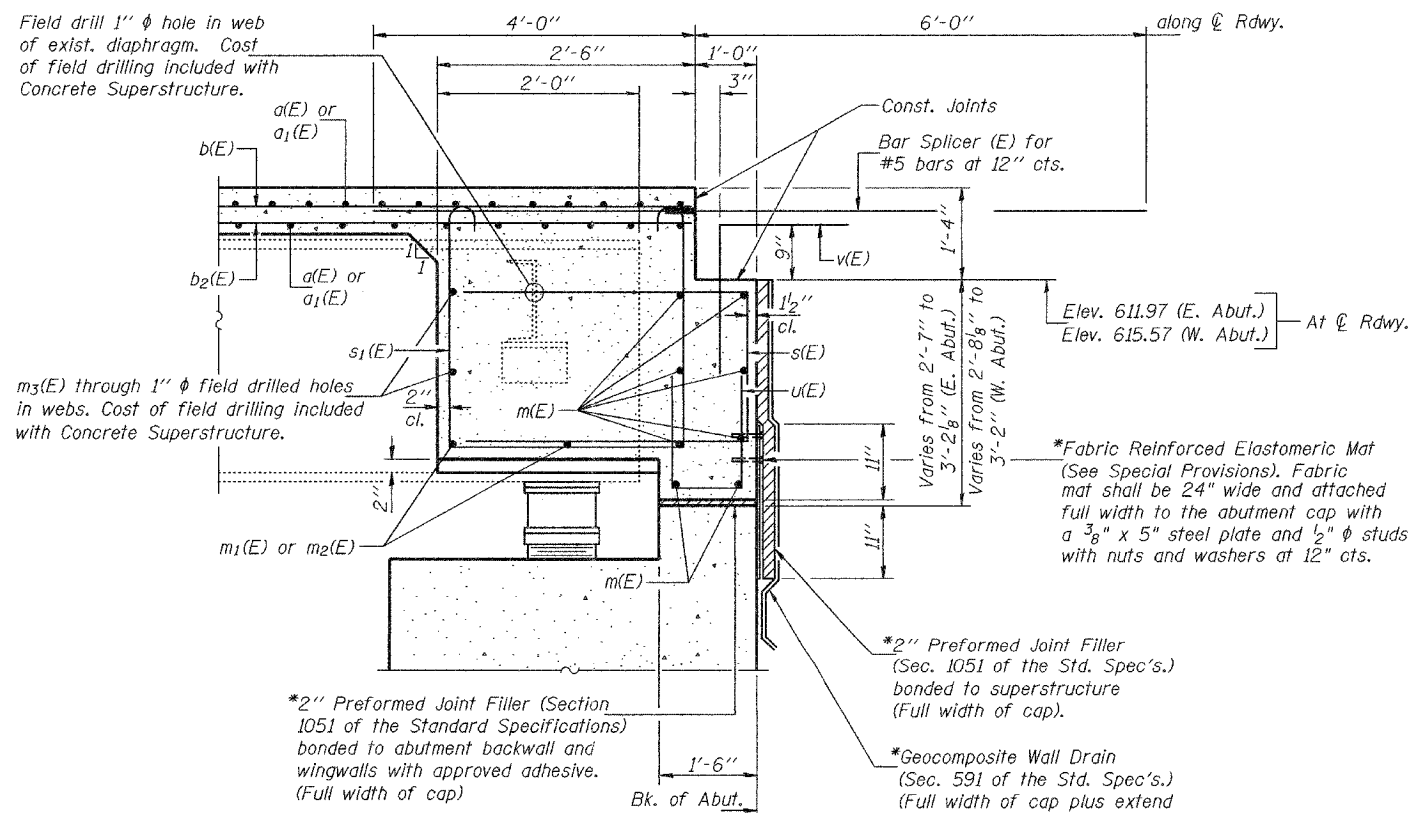
**DIAPHRAGM ELEVATION AT ABUTMENT**

(Dimensions are perpendicular to the  $\varnothing$  Rdwy.)  
(Existing & proposed steel end diaphragms not shown)

**MIN. BAR LAP**

#6 bar = 2'-9"

Notes: Reinforcement bars in diaphragm are billed with superstructure on sheet 6 of 23.  
Concrete in diaphragm is included with Concrete Superstructure on sheet 6 of 23.  
For details of bars s(E), s<sub>1</sub>(E), v(E) & u(E), see sheet 6 of 23.  
The s(E) and s<sub>1</sub>(E) bars shall be placed parallel to the beams. Spacing for these bars shall be at right angles to the beams.  
For anchor bolt details see sheet 13 of 23.  
See sheet 20 of 23 for bar splicer detail.



**SECTION A-A**

(Dimensions at Rt. L's unless otherwise shown)

DESIGNED	CCC
CHECKED	DPN
DRAWN	h.t. duong
CHECKED	CCC/DPN

Oct. 11, 2005  
EXAMINED *Thomas J. Donagabadi*  
ENGINEER OF BRIDGES DESIGN  
PASSED *Rolab E. Anderson*  
ENGINEER OF BRIDGES AND STRUCTURES

**DIAPHRAGM DETAILS**  
F.A.P. RTE. 309 - SEC. 7HBR-1  
WHITESIDE COUNTY  
STATION 51+17.83  
STRUCTURE NO. 098-6000