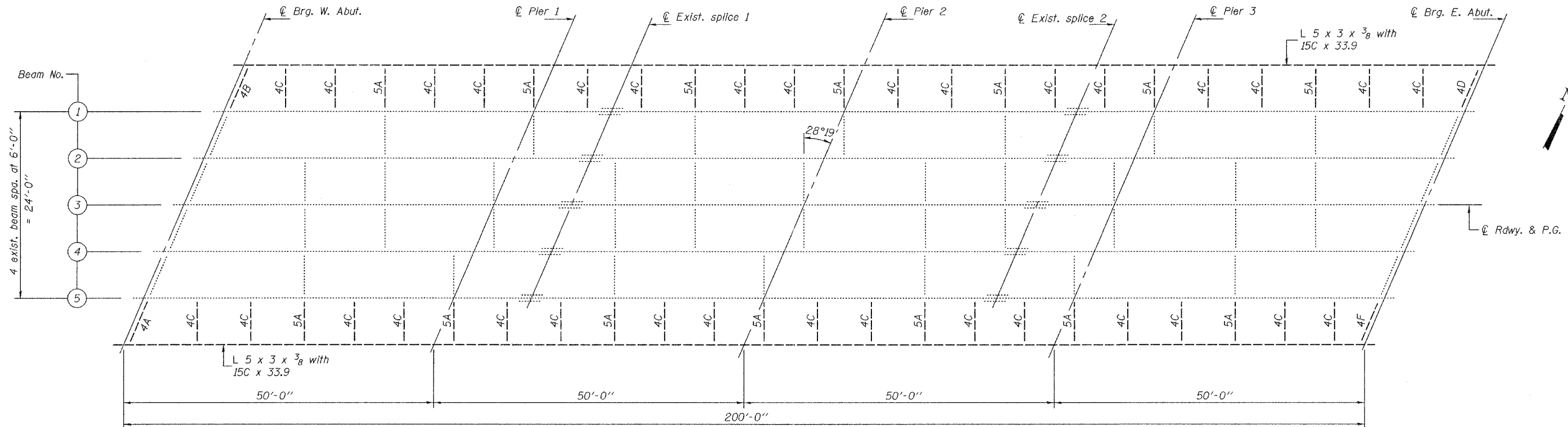


STATE OF ILLINOIS
DEPARTMENT OF TRANSPORTATION

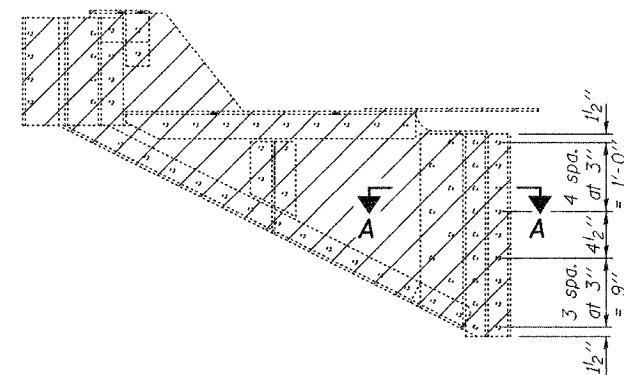
| | | | | |
|-----------------------|----------|------------------|--------------|-----------|
| ROUTE NO. | SECTION | COUNTY | TOTAL SHEETS | SHEET NO. |
| F.A.P. 309 | 7HBR-1 | WHITESIDE | 146 | 45 |
| FED. ROAD DIST. NO. 7 | ILLINOIS | FED. AID PROJECT | | |

SHEET NO. 8
23 SHEETS

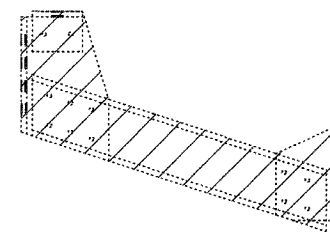
Contract #84883



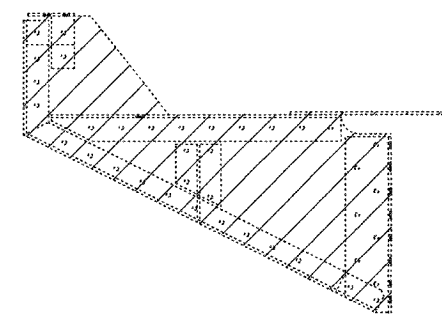
FRAMING PLAN



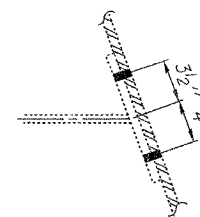
BRACKETS 4A, 4B, 4D & 4F
(1 Each - 4 Total)



BRACKET 4C
(26 total)



BRACKET 5A
(26 total)



SECTION A-A

Existing 7/8" ϕ rivets shall be removed by grinding the head off. Cost included with Structural Steel Removal.

Notes: Rivet that connect brackets 4C and 5A to existing beams 1 & 5 need not be removed. Brackets may be removed by flame cutting outstanding leg of brackets 1/2" from web of existing beams. Cost include with Structural Steel Removal.
For structural steel repair, see sheet 10 of 23.
Hatched area indicates removal of existing structural steel.

BILL OF MATERIAL

| Item | Unit | Total |
|--------------------------|-------|-------|
| Structural Steel Removal | Pound | 32875 |
| Structural Steel Repair | Pound | 1040 |

STRUCTURAL STEEL REMOVAL
F.A.P. RTE. 309 - SEC. 7HBR-1
WHITESIDE COUNTY
STATION 51+17.83
STRUCTURE NO. 09B-6000

| | |
|----------|------------|
| DESIGNED | CCC |
| CHECKED | DPN |
| DRAWN | h.t. duong |
| CHECKED | CCC/DPN |

Oct. 11, 2005
EXAMINED *Thomas J. Damagala*
ENGINEER OF BRIDGE DESIGN
PASSED *Ralph E. Anderson*
ENGINEER OF BRIDGES AND STRUCTURES