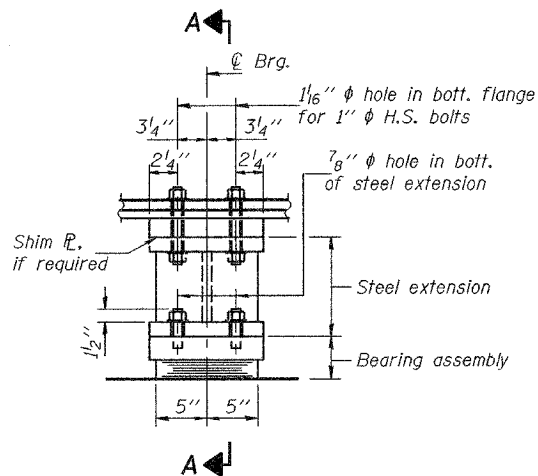


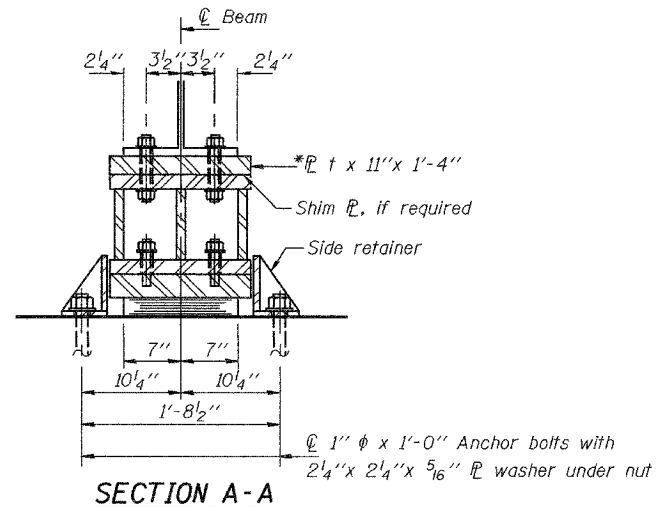
STATE OF ILLINOIS
DEPARTMENT OF TRANSPORTATION

ROUTE NO.	SECTION	COUNTY	STATES	SHEET	SHEET NO. 12 23 SHEETS
F.A.P. 309	7HBR-1	WHITESIDE	146	49	
FED. ROAD DIST. NO. 7	ILLINOIS	FED. AID PROJECT-			

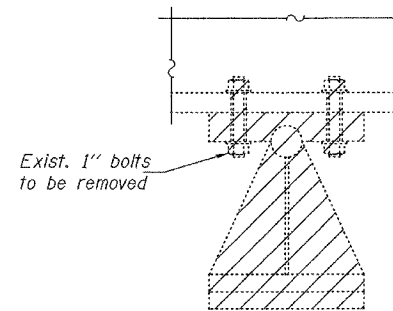
Contract #84883



ELEVATION AT PIERS 1 & 3



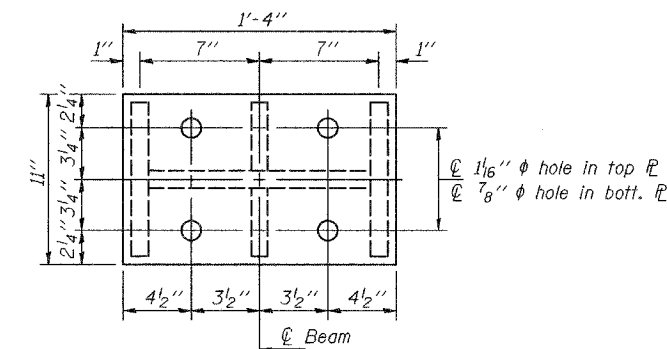
SECTION A-A



EXISTING BEARING REMOVAL

At Piers 1 & 3

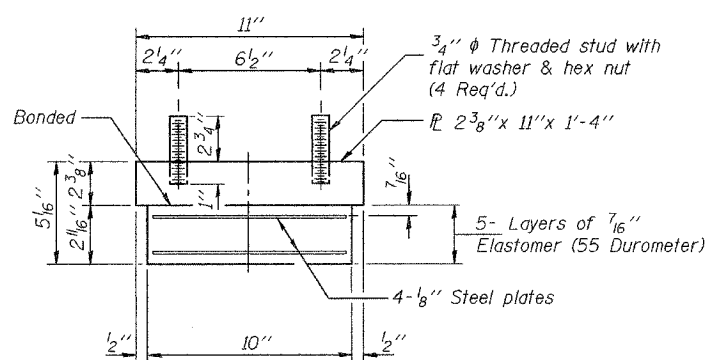
Notes: Hatched area indicates existing bearing to be removed. Cost included with Jack and Remove Existing Bearings.



PLAN-TOP & BOTTOM PLATE

TYPE I ELASTOMERIC EXP. BRG.

Beams 1A & 5A shown, existing beams 1 thru 5 similar.

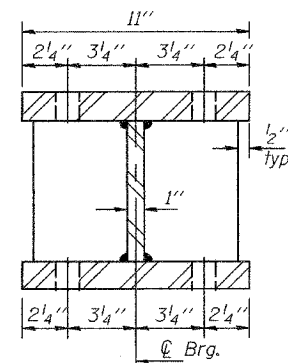


BEARING ASSEMBLY

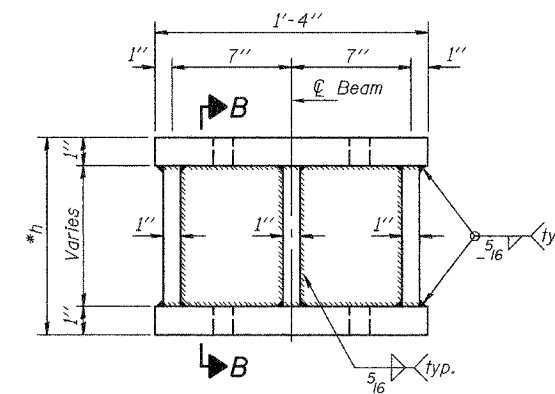
Note: Shim plates shall not be placed under Bearing Assembly.

JACK AND REMOVE EXISTING BEARING PROCEDURE

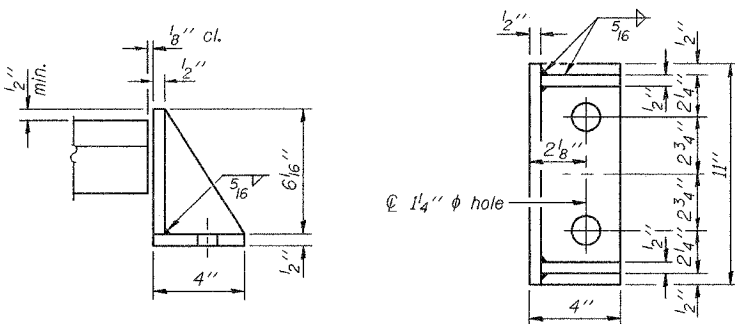
1. The Contractor shall submit for approval by the Engineer, plans for jacking prior to commencing any work at the bearings.
2. Jacking and removing existing bearings shall be done after existing deck removal is completed and before a new deck is poured. Cost included with Jack and Remove Existing Bearing.
3. Jacking shall be limited to a maximum of 1/8 inch.
4. The maximum dead load reaction with deck removed (per bearing) at each abutment is 3.0 k, 8.6 k at Piers 1 & 3 and 7.0 k at Pier 2. Min. jack capacity at the abutments is 4.5 k and 12.9 k at the piers.
5. The new bearings and steel extensions shall be in place and the jacks shall be lowered before the new concrete deck is poured.



SECTION B-B



STEEL EXTENSION DETAIL



SIDE RETAINER

Equivalent rolled angle with stiffeners will be allowed in lieu of welded plates. Weight included with Structural Steel.

***h & t DIMENSIONS**

Pier 1							
Dimension	Beam 1A	Beam 1	Beam 2	Beam 3	Beam 4	Beam 5	Beam 5A
h	7 3/16"	7 3/16"	7 3/16"	9 5/8"	9 5/8"	9 5/8"	9 5/8"
t			1 5/8"	3 1/16"	7 1/16"		

Pier 3							
Dimension	Beam 1A	Beam 1	Beam 2	Beam 3	Beam 4	Beam 5	Beam 5A
h	7 3/16"	7 3/16"	7 3/16"	9 5/8"	9 5/8"	9 5/8"	9 5/8"
t			1 13/16"	9 1/16"	1"	3 1/4"	3 1/4"

BILL OF MATERIAL

Item	Unit	Total
Elastomeric Bearing Assembly Type I	Each	14
Jack and Remove Existing Bearings	Each	10

BEARING DETAILS

F.A.P. RTE. 309 - SEC. 7HBR-1
WHITESIDE COUNTY
STATION 51+17.83
STRUCTURE NO. 098-6000

DESIGNED	CCC
CHECKED	DPN
DRAWN	h.t. duong
CHECKED	CCC/DPN

Oct. 11, 2005
EXAMINED *Thomas J. Domagala*
PASSED *Ralph E. Carlson*
ENGINEER OF BRIDGE DESIGN
ENGINEER OF BRIDGES AND STRUCTURES