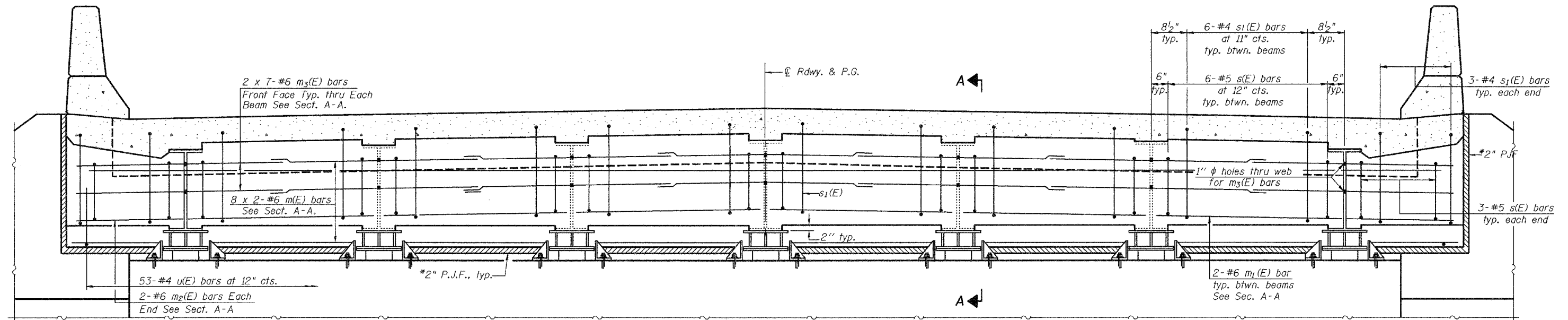


STATE OF ILLINOIS
DEPARTMENT OF TRANSPORTATION

ROUTE NO.	SECTION	COUNTY	POST MILES	SHEET	SHEET NO. 7
F.A.P. 309	7VBR	WHITESIDE	146	67	22 SHEETS
FED. ROAD DIST. NO. 7	ILLINOIS	FED. AID PROJECT			

Contract #84883



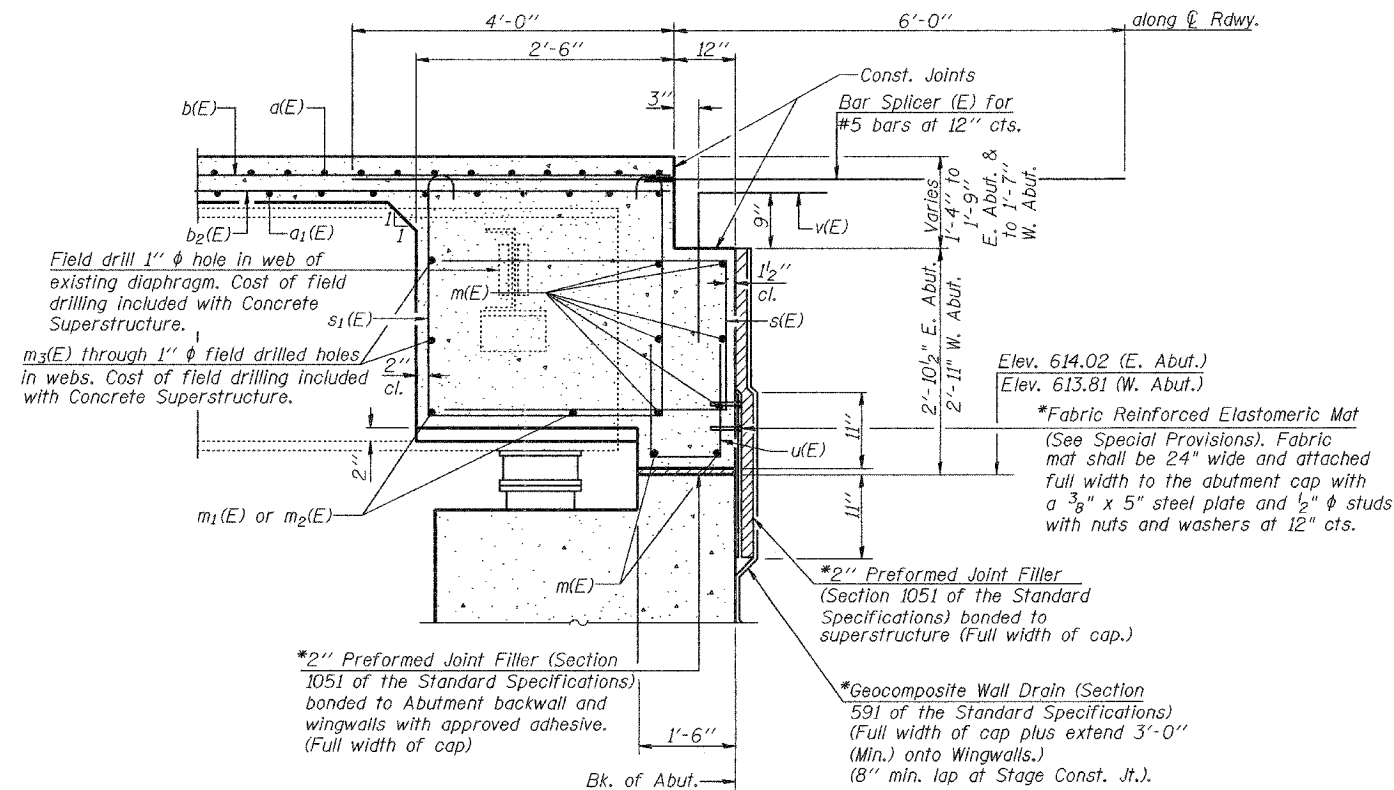
DIAPHRAGM AT ABUTMENTS

(Dimensions are perpendicular to the \varnothing Rdwy.)
(Existing steel end diaphragms are not shown.)

MIN. BAR LAP

#6 bar = 2'-9"

Notes: Reinforcement bars in diaphragm are billed with superstructure on sheet 6 of 22.
Concrete in diaphragm is included with Concrete Superstructure on sheet 6 of 22.
For details of bars s(E), s₁(E), v(E) & u(E) see sheet 6 of 22.
For anchor bolt details see sheet 18 of 22.
The s(E) and s₁(E) bars shall be placed parallel to the beams.
Spacing for these bars shall be at right angles to the beams.
See sheet 17 of 22 for Bar Splicer Detail.



SECTION A-A

(Dimensions at Rt. L's unless otherwise shown)

*Included in the cost of Concrete Superstructure.

DESIGNED	Patrick M. Petrone
CHECKED	Stephen M. Ryan
DRAWN	R. Sommer
CHECKED	P.M.P./S.M.R.

October 11, 2005
EXAMINED *Thomas J. Demagala*
ENGINEER OF BRIDGE DESIGN
PASSED *Ralph E. Anderson*
ENGINEER OF BRIDGES AND STRUCTURES

DIAPHRAGM DETAILS
F.A.P. RT. 309 SEC. 7VBR
WHITESIDE COUNTY
STATION 47+18.53
STRUCTURE No. 098-6001