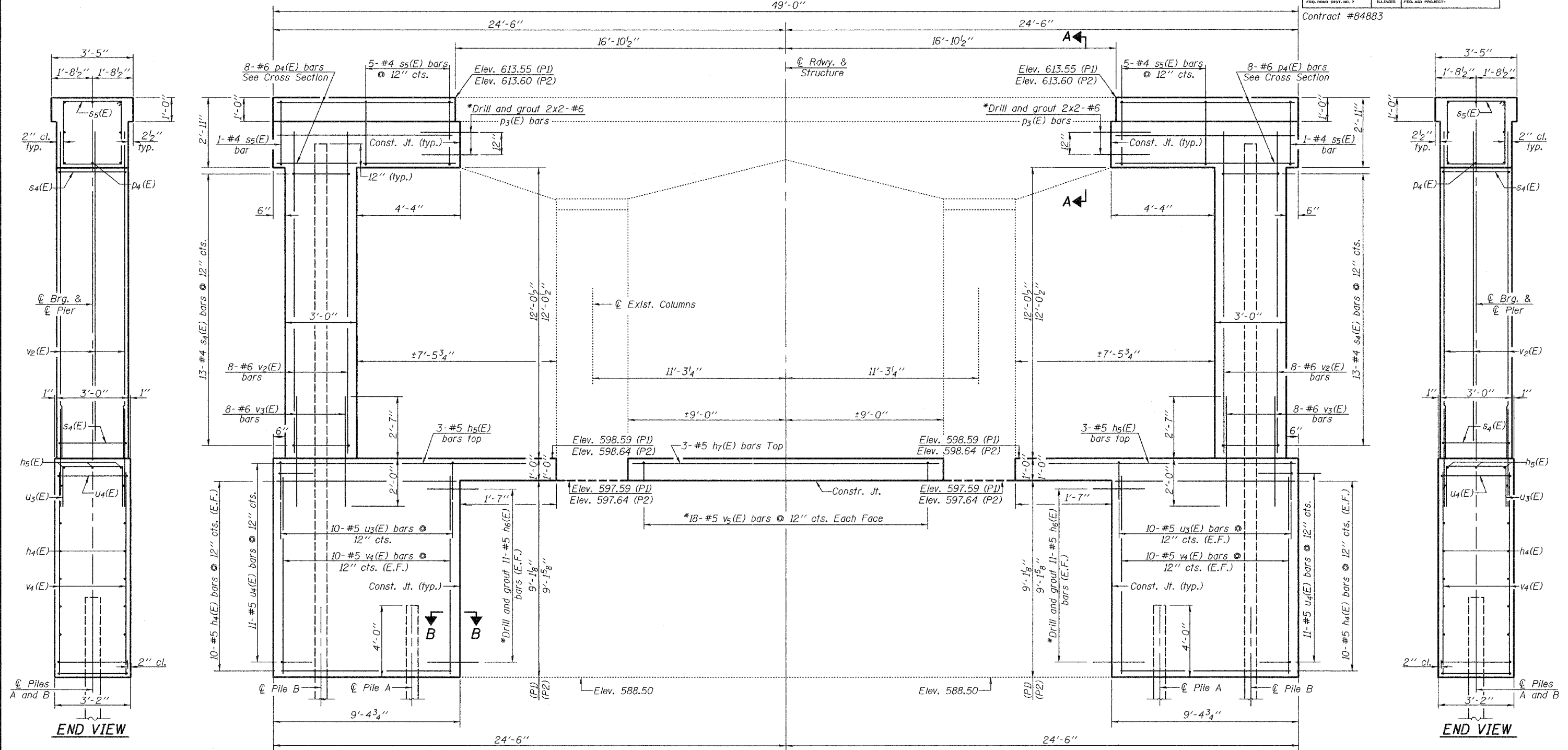


STATE OF ILLINOIS
DEPARTMENT OF TRANSPORTATION
49'-0"

ROUTE NO.	SECTION	COUNTY	TOTAL SHEETS	SHEET NO.	SHEET NO. 15
F.A.P. 309	TVBR	WHITESIDE	146	75	22 SHEETS
FED. ROAD DIST. NO. 7		BALANCES	FED. AID PROJECT-		

Contract #84883



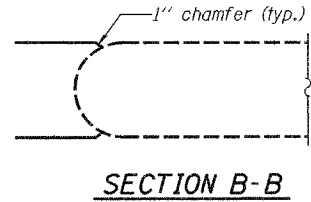
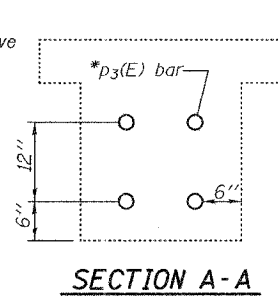
ELEVATION Note: No field splicing of HPI2x53 piles are allowed above Elevation 577.5.

*Bars shall be grouted into 9" deep holes according to Section 584 of the Standard Specifications.

PILE DATA

Type: Steel HPI2x53
Capacity: 55 Tons Driven to 82.5 Ton
No. Req'd.: 8
Est. Length:

Location	Pile A	Pile B
Pier 1	51'	70'
Pier 2	52'	71'



ELEVATION

Notes: Space reinforcement in cap to miss anchor bolts.
All edges shall have standard 3/4" chamfers except as noted.
For anchor bolt installation details see sheet 18 of 22.

DESIGNED	Patrick M. Petrone
CHECKED	Stephen M. Ryan
DRAWN	R. Sommer
CHECKED	P.M.P./S.M.R.

October 11, 2005
EXAMINED *Thomas J. Demagala*
PASSED *Ralph E. Anderson*
ENGINEER OF BRIDGES AND STRUCTURES

PIER DETAILS
F.A.P. RT. 309 SEC. 7VBR
WHITESIDE COUNTY
STATION 47+18.53
STRUCTURE No. 098-6001