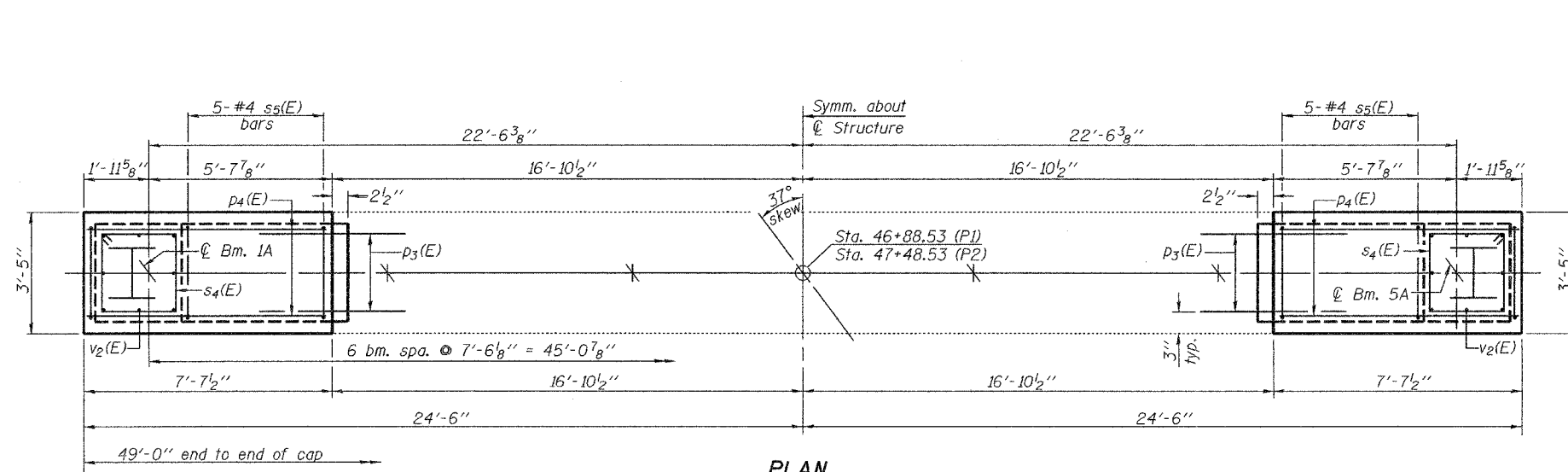


STATE OF ILLINOIS  
DEPARTMENT OF TRANSPORTATION

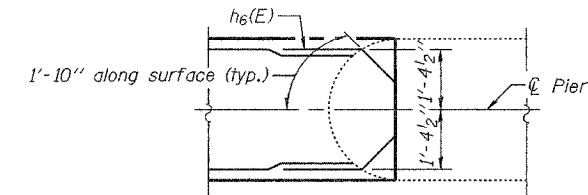
ROUTE NO.	SECTION	COUNTY	TOTAL SHEETS	SHEET NO.
F.A.P. 309	7VBR	WHITESIDE	146	76
FED. ROAD DIST. NO. 7	ILLINOIS	FED. AID PROJECT		

Contract #84883

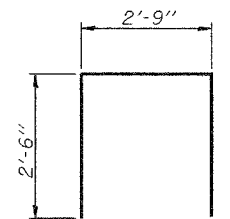
SHEET NO. 16  
22 SHEETS



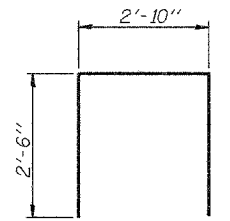
PLAN



DETAIL A



BAR u3(E)

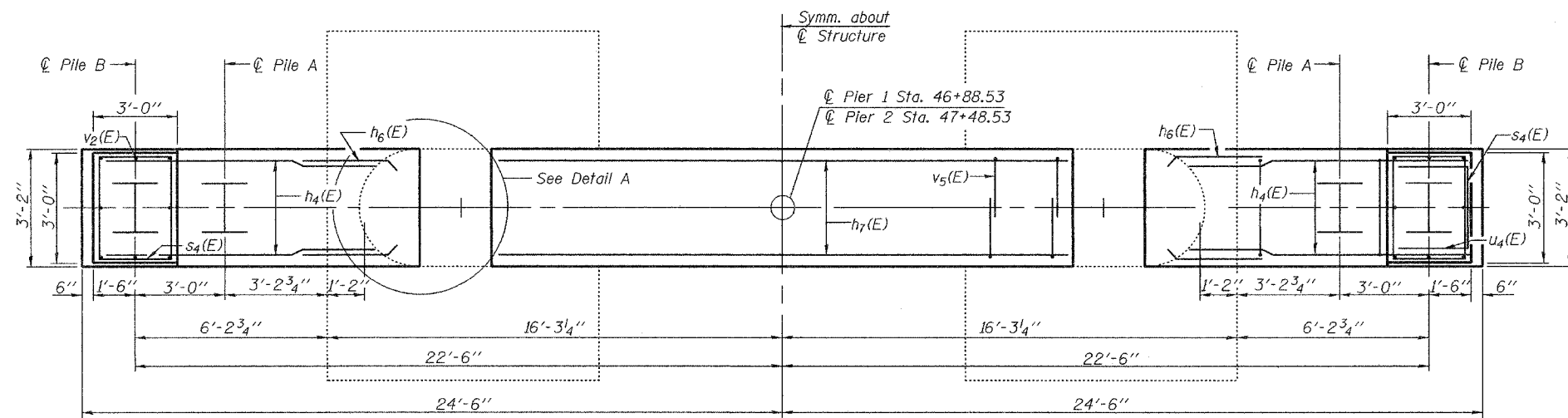


BAR u4(E)

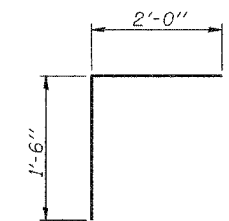
TWO PIERS  
BILL OF MATERIAL

Bar	No.	Size	Length	Shape
h4(E)	80	#5	9'-0"	—
h5(E)	12	#5	10'-7"	—
h6(E)	88	#5	3'-3"	—
h7(E)	6	#5	17'-9"	—
p3(E)	8	#6	3'-3"	—
p4(E)	32	#6	7'-4"	—
s4(E)	52	#4	11'-5"	□
s5(E)	24	#4	11'-3"	□
u3(E)	40	#5	7'-9"	—
u4(E)	44	#5	7'-10"	—
v2(E)	32	#6	14'-0"	—
v3(E)	32	#6	4'-7"	—
v4(E)	80	#5	9'-9"	—
v5(E)	72	#5	3'-6"	—
Reinforcement Bars, Epoxy Coated		Pound	4920	
Concrete Structures		Cu. Yds.	77.8	
Structure Excavation		Cu. Yds.	72	
Furnishing Steel Piles HP 12x53		Foot	488	

Reinforcement bars designated (E) shall be epoxy coated.



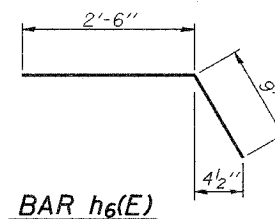
FOOTING



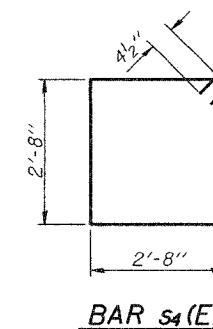
BAR v5(E)

\*Bars shall be grouted into 9" deep holes according to Section 584 of the Standard Specifications.

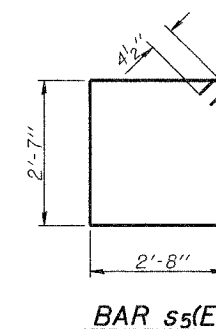
Notes: Space reinforcement in cap to miss anchor bolts.  
All edges shall have standard 3/4" chamfers except as noted.  
For anchor bolt installation details see sheet 18 of 22.



BAR h6(E)



BAR s4(E)



BAR s5(E)

PIER DETAILS  
F.A.P. RT. 309 SEC. 7VBR  
WHITESIDE COUNTY  
STATION 47+18.53  
STRUCTURE No. 098-6001

DESIGNED	Patrick M. Petrone
CHECKED	Stephen M. Ryan
DRAWN	R. Sommer
CHECKED	P.M.P./S.M.R.

EXAMINED	October 11, 2005 Thomas J. Domagala ENGINEER OF BRIDGE DESIGN
PASSED	Ralph E. Anderson ENGINEER OF BRIDGES AND STRUCTURES