

F.A.U. RTE.	SECTION	COUNTY	TOTAL SHEETS	SHEET NO.
6371	93-00295-02-PV	MCLEAN	117	1
ILLINOIS				

CONTRACT NO. 87267

INDEX OF SHEETS

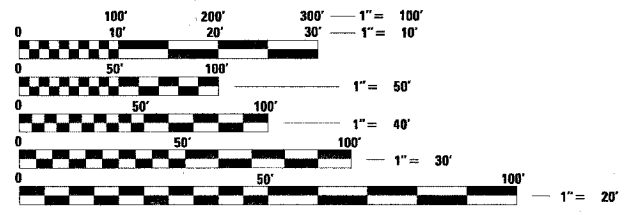
SHEET NO.	DESCRIPTION
1	TITLE SHEET
2	GENERAL NOTES
3	HIGHWAY STANDARDS AND LEGEND
4-10	SUMMARY OF QUANTITIES
11-12	SCHEDULE OF QUANTITIES
13	EXISTING TYPICAL SECTIONS
14	PROPOSED TYPICAL SECTIONS
15	HORIZONTAL ALIGNMENT LAYOUT AND CONTROL
16	SUPERELEVATION TRANSITION TABLES
17	STORM WATER POLLUTION PREVENTION PLAN
18-26	STAGE CONSTRUCTION AND MAINTENANCE OF TRAFFIC PLANS
27-33	REMOVALS/RELOCATIONS PLANS
34-40	PLAN AND PROFILE - HAMILTON ROAD
41-45	PLAN AND PROFILE - MORRIS AVENUE
46	OUTFALL STORM SEWER PLAN AND PROFILE
47-50	PAVEMENT JOINT PLANS
51-52	INTERSECTION DETAILS
53-58	PAVEMENT MARKING PLANS
59-60	PAVEMENT MARKING DETAILS
61-71	WATER MAIN PLANS
72-73	WATER MAIN DETAILS
74-79	SANITARY SEWER PLANS
80-81	SANITARY DETAILS
82-85	TRAFFIC SIGNAL PLANS - HAMILTON ROAD/ MORRIS AVENUE
86	TRAFFIC SIGNAL SYSTEM INTERCONNECT PLANS
87	TREE PLANTING PLAN
88-91	MISCELLANEOUS DETAILS
92-104	CROSS SECTIONS - HAMILTON ROAD
105-107	CROSS SECTIONS - HAMILTON ROAD TEMPORARY PAVEMENT
108-117	CROSS SECTIONS - MORRIS AVENUE

STATE OF ILLINOIS
DEPARTMENT OF TRANSPORTATION
DIVISION OF HIGHWAYS
PLANS FOR PROPOSED
STREET IMPROVEMENTS
SURFACE TRANSPORTATION URBAN PROGRAM
CITY OF BLOOMINGTON, ILLINOIS
McLEAN COUNTY
CITY SECTION 93-00295-02-PV PROJECT: ACM-5227(042)
C-93-074-04
HAMILTON ROAD-F.A.U. RTE. 6371
MORRIS AVENUE-F.A.U. RTE. 6391

SCALES

PLAN	1 INCH = 20 FEET
PROFILE HORIZ.	1 INCH = 20 FEET
PROFILE VERT.	1 INCH = 5 FEET
CROSS SECTIONS HORIZ.	1 INCH = 10 FEET
CROSS SECTIONS VERT.	1 INCH = 5 FEET

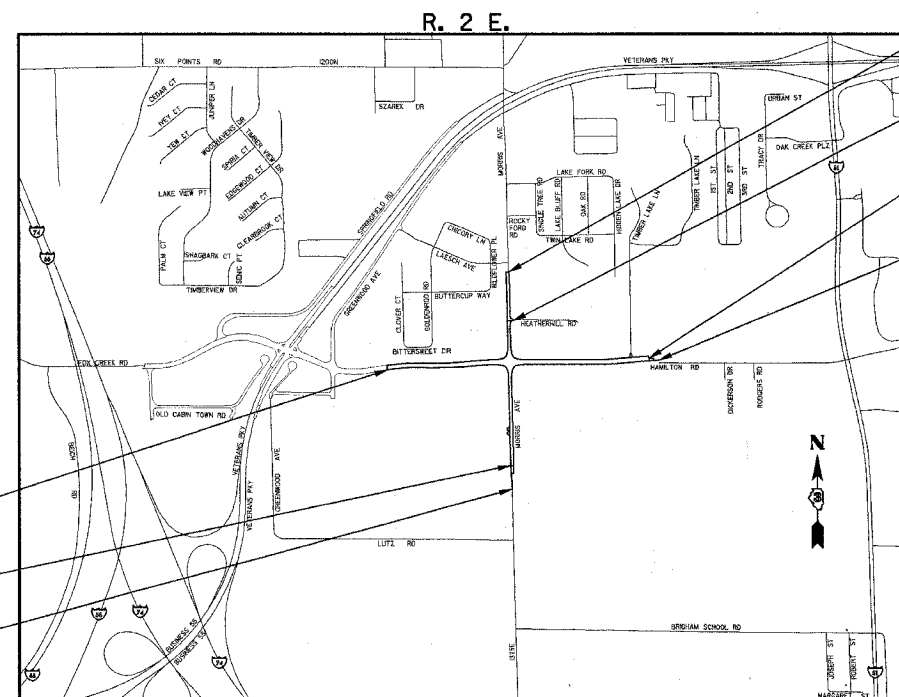
ILLINOIS HIGHWAY STANDARD DRAWINGS
(SEE SHEET NO. 3)



FULL SIZE PLANS HAVE BEEN PREPARED USING STANDARD ENGINEERING SCALES. REDUCED SIZED PLANS WILL NOT CONFORM TO STANDARD SCALES, IN MAKING MEASUREMENTS ON REDUCED PLANS, THE ABOVE SCALES MAY BE USED.

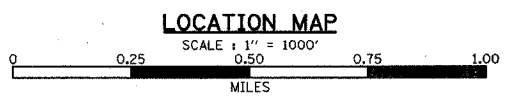
J.U.L.I.E.
JOINT UTILITY LOCATION INFORMATION FOR EXCAVATION
1-800-892-0123

CONTRACT NO. 87267



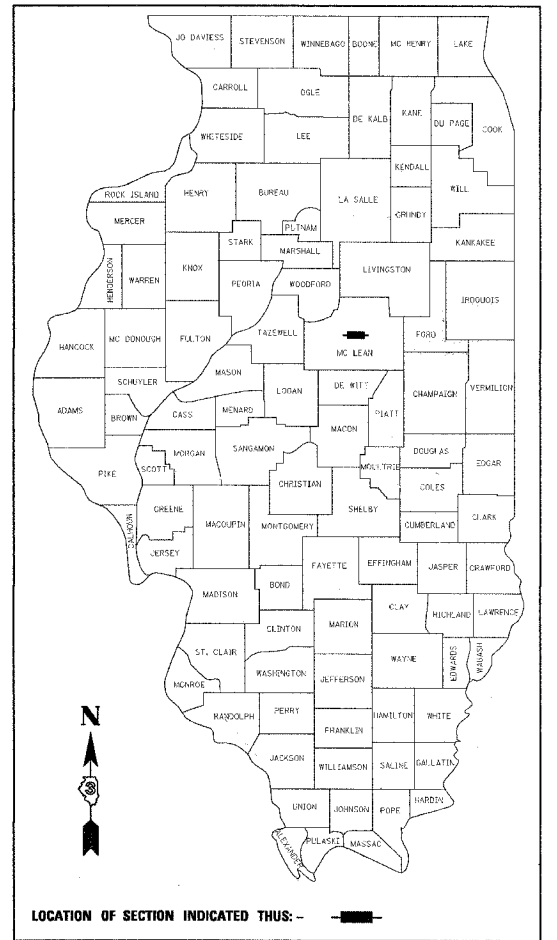
END PROJECT MORRIS AVE. STA. 910+15.00
 END IMPROVEMENTS MORRIS AVENUE STA. 904+63.50
 END IMPROVEMENTS HAMILTON ROAD STA. 240+90.00
 END PROJECT HAMILTON RD. STA. 242+00.00

BEGIN IMPROVEMENTS HAMILTON ROAD STA. 211+65.00
 BEGIN IMPROVEMENTS MORRIS AVENUE STA. 888+40.00
 BEGIN PROJECT MORRIS AVE. STA. 885+73.00



TOTAL LENGTH OF HAMILTON ROAD IMPROVEMENT = 2925.00 FEET = 0.55 MILES
 TOTAL LENGTH OF MORRIS AVENUE IMPROVEMENT = 1568.48 FEET = 0.30 MILES
 TOTAL LENGTH OF IMPROVEMENTS = 4493.48 FEET = 0.85 MILES

DESIGN DESIGNATION
 HAMILTON ROAD
 1830 (25) MINOR ARTERIAL 1.10 (PCC 20)
 MORRIS AVENUE
 1217 (25) COLLECTOR 0.50 (PCC 20)
 FOR STREET CLASSIFICATIONS AND TRAFFIC VOLUMES SEE TYPICAL SECTION SHEETS.



STATE OF ILLINOIS
DEPARTMENT OF TRANSPORTATION
DIVISION OF HIGHWAYS

APPROVED APRIL 6 20 05
Greg Manton
REGION 2 ENGINEER

PASSED APRIL 6 20 05
Justin
DISTRICT ENGINEER OF LOCAL ROADS AND STREETS

CITY OF BLOOMINGTON

APPROVED BY:
Earl M. ... 3/17/2005
DIRECTOR OF ENGINEERING DATE

DATE: 3-16-05
 LICENSE EXPIRES 11-30-05

Clark Dietz
 CHAMPAIGN, ILLINOIS
 CHICAGO, ILLINOIS
 EVANSVILLE, INDIANA
 INDIANAPOLIS, INDIANA
 KENOSHA, WISCONSIN
 DESIGN FIRM REGISTRATION NO. IB4-00450