

| F.A.U. RTE. | SECTION | COUNTY | TOTAL SHEETS | SHEET NO. |
|--------------------|----------------|--------|--------------|-----------|
| 6371 | 93-00295-02-PV | MCLEAN | 117 | 22 |
| STA. | TO STA. | | ILLINOIS | |
| CONTRACT NO. 87267 | | | | |

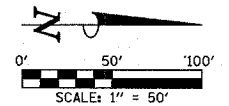
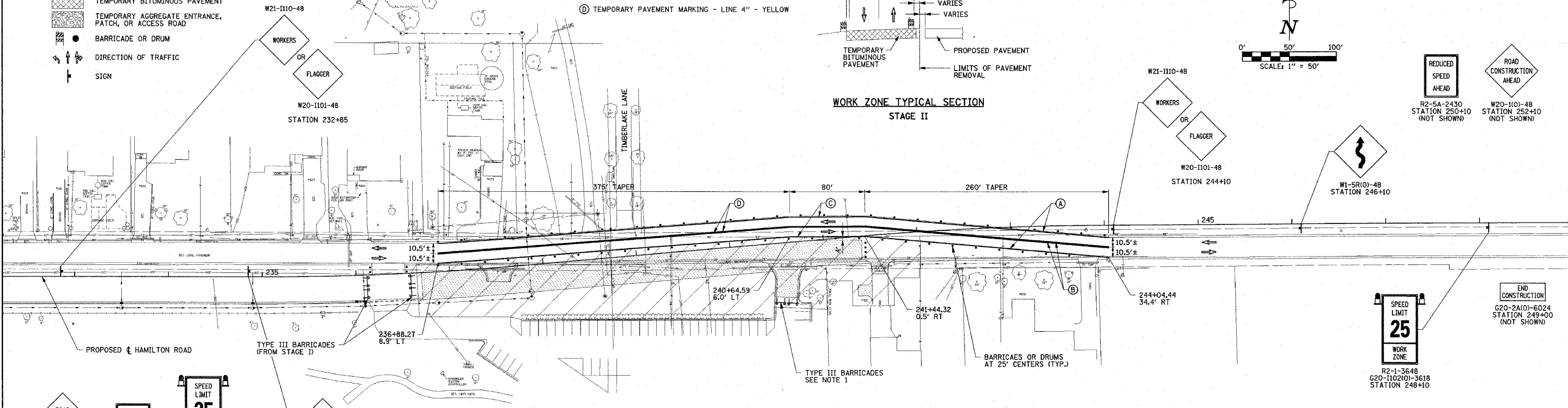
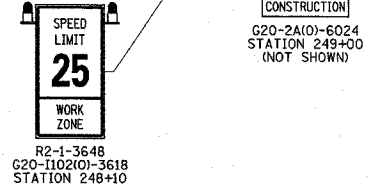
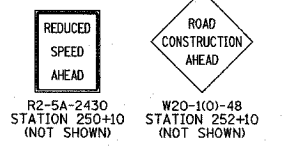
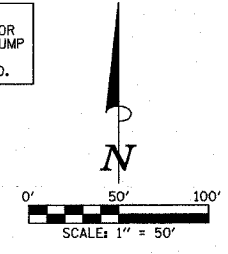
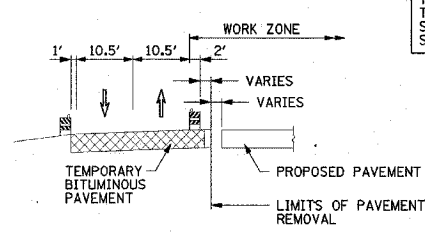
LEGEND

- CONSTRUCTION WORK ZONE
- LIMITS OF PROPOSED CONSTRUCTION
- TEMPORARY BITUMINOUS PAVEMENT
- TEMPORARY AGGREGATE ENTRANCE, PATCH, OR ACCESS ROAD
- BARRICADE OR DRUM
- DIRECTION OF TRAFFIC
- SIGN

WORK ZONE PAVEMENT MARKING LEGEND

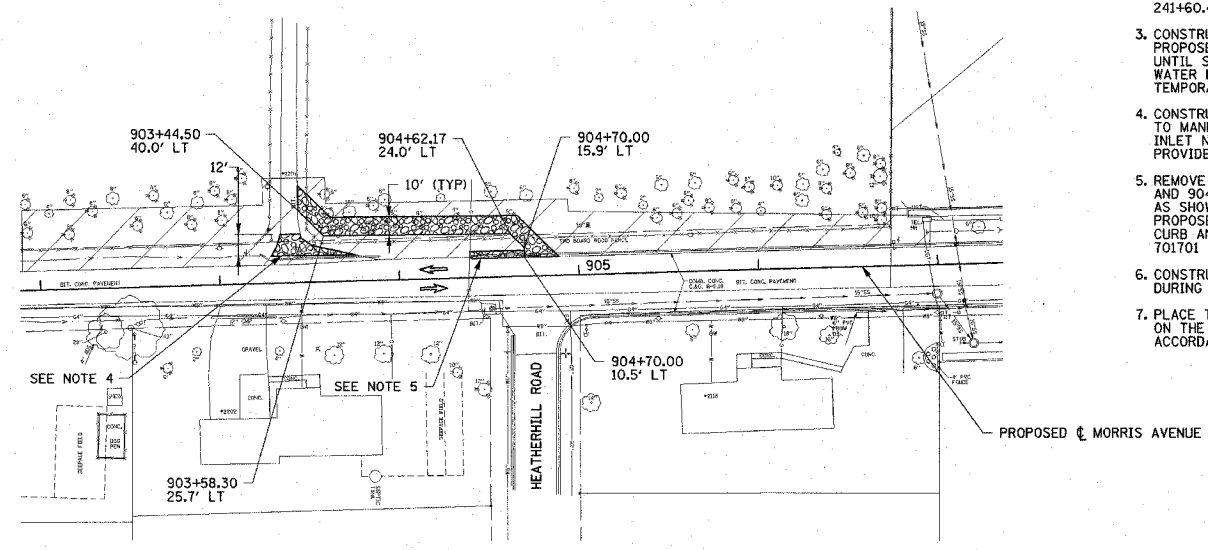
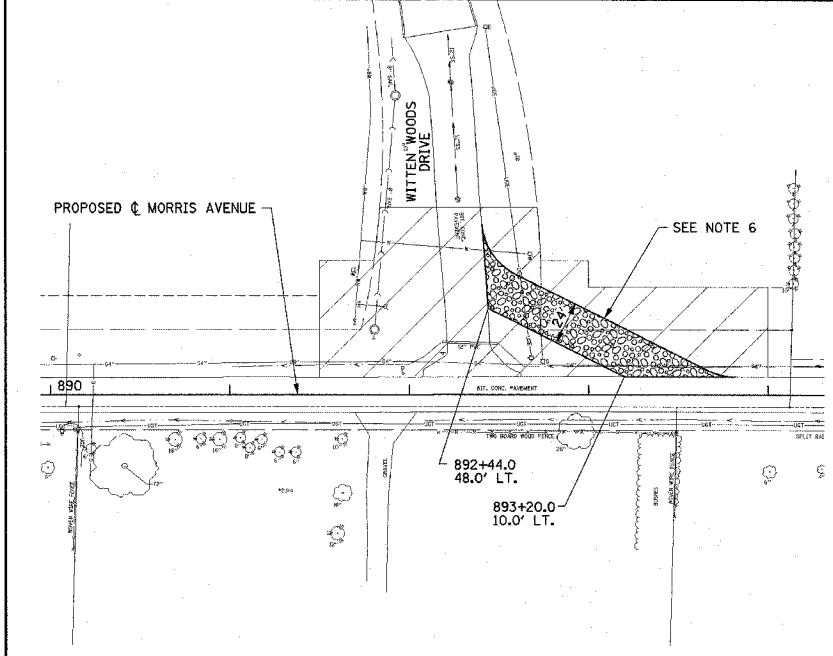
- (A) PAVEMENT MARKING TAPE, TYPE III 4" - WHITE
- (B) PAVEMENT MARKING TAPE, TYPE III 4" - YELLOW
- (C) TEMPORARY PAVEMENT MARKING - LINE 4" - WHITE
- (D) TEMPORARY PAVEMENT MARKING - LINE 4" - YELLOW

NOTE:
THE ADDITIONAL TRAFFIC CONTROL DEVICES SHOWN FOR THIS STAGE SHALL BE INCLUDED IN THE CONTRACT LUMP SUM PRICE FOR TRAFFIC CONTROL AND PROTECTION, STANDARD 701606, SPECIAL UNLESS OTHERWISE NOTED.



SUGGESTED STAGE II CONSTRUCTION SEQUENCE

- EXISTING MORRIS AVENUE SHALL REMAIN CLOSED TO ALL TRAFFIC AT STATIONS 896+00 AND 900+15 IN ACCORDANCE WITH STANDARD BLR 21. CLOSE THE EAST ENTRANCE TO THE PRAIRIE VISTA GOLF COURSE CLUB HOUSE PARKING LOT, RT. STATION 240+63.5, WITH TYPE III BARRICADES AS SHOWN ON THE TRAFFIC CONTROL PLANS. OPEN THE PREVIOUSLY CONSTRUCTED WEST ENTRANCE TO THE PRAIRIE VISTA GOLF COURSE CLUB HOUSE PARKING LOT, RT. STATION 236+35. HAMILTON ROAD SHALL REMAIN CLOSED WITH TYPE III BARRICADES AT STATION 211+60. THE PREVIOUSLY CONSTRUCTED STAGE I SECTION OF HAMILTON ROAD SHALL BE CLOSED TO TRAFFIC.
- THE RESIDENTS AT LT. STATION 898+70 SHOULD ACCESS THEIR PROPERTY FROM THE TEMPORARY ENTRANCE AT LT. STATION 895+80 PREVIOUSLY CONSTRUCTED IN STAGE I DURING THIS STAGE. THE RESIDENTS AT RT. STATION 241+60.4 SHOULD PARK IN THE PRAIRIE VISTA GOLF COURSE CLUB HOUSE PARKING LOT DURING THIS STAGE.
- CONSTRUCT THE SOUTH HALF OF HAMILTON ROAD BETWEEN STATIONS 236+70.00 AND 242+00.00. CONSTRUCT THE PROPOSED WATER MAIN AT STATION 239+42.0 TO 3' \pm LEFT OF THE CENTERLINE. TEMPORARILY CAP THE WATER MAIN UNTIL STAGE III WHEN IT WILL BE COMPLETED. DO NOT CONNECT TO THE EXISTING WATER MAIN UNTIL THE PROPOSED WATER MAIN IS IN SERVICE (STAGE IV). CONSTRUCT THE STORM SEWER LATERALS TO 3' \pm LEFT OF THE CENTERLINE. TEMPORARILY PLUG THE LATERALS UNTIL STAGE III WHEN THEY WILL BE COMPLETED.
- CONSTRUCT THE PROPOSED SANITARY SEWER FROM MANHOLE NO. 4 TO LT. STATION 906+94 AND FROM MANHOLE NO. 11 TO MANHOLE NO. 12. CONSTRUCT THE STORM SEWER ON MORRIS AVENUE FROM PROPOSED MANHOLE NO. 93 TO PROPOSED INLET NO. 100. PATCH THE EXISTING ENTRANCE AT LT. STATION 903+40.0 WITH AGGREGATE FOR TEMPORARY ACCESS. PROVIDE TRAFFIC CONTROL ON EXISTING MORRIS AVENUE IN ACCORDANCE WITH STANDARD 701701 FOR SHOULDER OPERATIONS.
- REMOVE THE CONCRETE CURB AND GUTTER ALONG THE WEST SIDE OF MORRIS AVENUE BETWEEN STATIONS 903+44.50 AND 904+90.00. CONSTRUCT THE TEMPORARY AGGREGATE ACCESS ROAD BETWEEN STATIONS 903+44.50 AND 904+90.00 AS SHOWN ON THE TRAFFIC CONTROL PLANS. THE EAST EDGE OF THE ACCESS ROAD IS 5' \pm FROM THE CENTER OF THE PROPOSED STORM SEWER. PLACE ADDITIONAL AGGREGATE FOR TEMPORARY ACCESS TO FILL THE VOID LEFT FROM THE CURB AND GUTTER REMOVAL. PROVIDE TRAFFIC CONTROL ON EXISTING MORRIS AVENUE IN ACCORDANCE WITH STANDARD 701701 FOR SHOULDER OPERATIONS.
- CONSTRUCT THE TEMPORARY ACCESS ROAD BETWEEN LT. STATION 892+44 AND LT. STATION 893+90 TO BE USED DURING STAGE III CONSTRUCTION.
- PLACE TEMPORARY PAVEMENT MARKING ON THE PREVIOUSLY CONSTRUCTED SECTIONS OF HAMILTON ROAD AS SHOWN ON THE TRAFFIC CONTROL PLANS FOR STAGE III. PROVIDE TRAFFIC CONTROL ON EXISTING HAMILTON ROAD IN ACCORDANCE WITH STANDARD 701311 AS REQUIRED.



ILLINOIS DEPARTMENT OF TRANSPORTATION
STAGE CONSTRUCTION AND MAINTENANCE OF TRAFFIC PLAN
STAGE II

DATE : 3-05
DRAWN BY : J.A.J.
CHECKED BY : R.L.H.