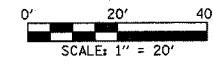


MATCH LINE - 150.00' LT. HAMILTON ROAD  
SEE OUTFALL STORM SEWER PLAN AND PROFILE SHEET FOR ADDITIONAL REMOVALS AND RELOCATIONS

F.A.U. RTE.	SECTION	COUNTY	TOTAL SHEETS	SHEET NO.
6371	93-00295-02-PV	MCLEAN	117	30
STA. 235+00.00		TO STA. 243+00.00		
ILLINOIS				
CONTRACT NO. 87267				



**NOTE 1**  
THE CONTRACTOR SHALL REMOVE THE RAILROAD TIES AND THE LANDSCAPING AS DIRECTED BY THE ENGINEER AND DISPOSE OF OFF SITE. THE COST OF THIS WORK SHALL BE CONSIDERED AS INCIDENTAL AND SHALL BE INCLUDED WITHIN THE CONTRACT UNIT PRICE FOR EARTH EXCAVATION.

**ABANDON EXISTING WATER MAIN**  
THE EXISTING WATER MAINS ALONG HAMILTON ROAD AND MORRIS AVENUE WITHIN THE PROJECT LIMITS WILL BE ABANDONED IN PLACE INCLUDING THE DOMESTIC WATER SERVICE VALVES, BOXES, AND SERVICE LINES. SEE THE WATER MAIN PLANS FOR ADDITIONAL INFORMATION.

FOR LOCATIONS OF TREES TO BE TRANSPLANTED SEE THE TREE PLANTING PLAN SHEETS.

FOR PROPOSED CONSTRUCTION IN THIS AREA SEE PLAN AND PROFILE SHEET NO'S. 39 & 40.

MAILBOXES SHALL BE RELOCATED AS DIRECTED BY THE ENGINEER IN ACCORDANCE WITH ARTICLE 107.20 OF THE STANDARD SPECIFICATIONS.

SEE PLAN AND PROFILE SHEETS FOR STORM SEWER REMOVAL AND STRUCTURE REMOVAL AND ADJUSTMENT SCHEDULES.

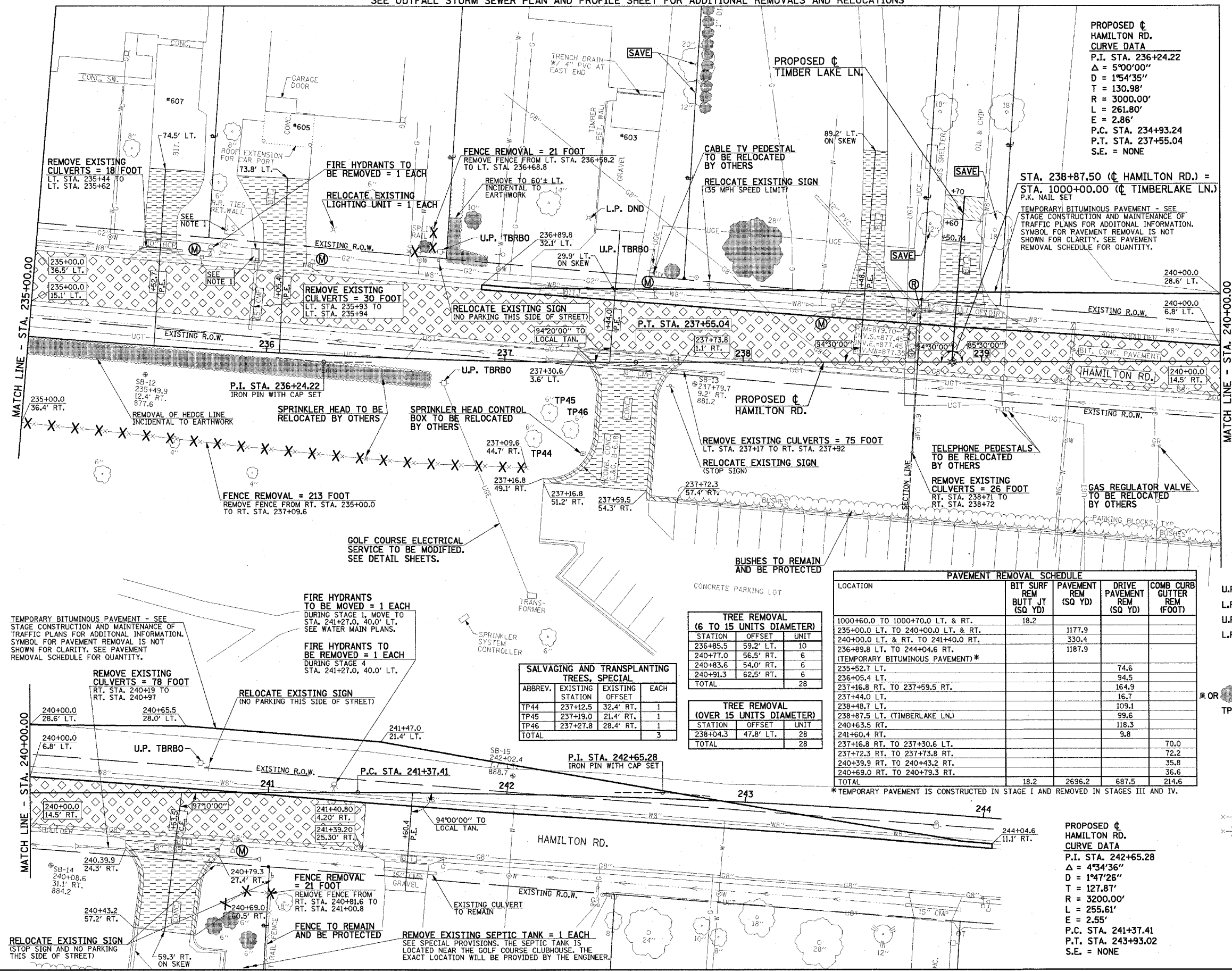
EXISTING PAVEMENTS, CURBS AND GUTTERS, AND SIDEWALKS IN WHICH THE TOP SURFACE IS TO BE JOINED TO THE PROPOSED WORK SHALL BE SO JOINED THROUGH SAW CUT JUNCTURES.

THE REMOVAL AND RELOCATION OF VARIOUS TRAFFIC SIGNS NOTED HEREON SHALL BE AS DIRECTED BY THE ENGINEER AND AS SPECIFIED IN GENERAL NOTE NO. 10 ON THE GENERAL NOTE SHEET. THIS WORK SHALL NOT BE PAID FOR SEPARATELY AND IS CONSIDERED INCIDENTAL TO THE CONTRACT.

**PROPOSED  $\phi$  HAMILTON RD. CURVE DATA**  
P.I. STA. 236+24.22  
 $\Delta = 5^{\circ}00'00''$   
D = 154'35"  
T = 130.98'  
R = 3000.00'  
L = 261.80'  
E = 2.86'  
P.C. STA. 234+93.24  
P.T. STA. 237+55.04  
S.E. = NONE

STA. 238+87.50 ( $\phi$  HAMILTON RD.) = STA. 1000+00.00 ( $\phi$  TIMBERLAKE LN.)  
P.K. NAIL SET

TEMPORARY BITUMINOUS PAVEMENT - SEE STAGE CONSTRUCTION AND MAINTENANCE OF TRAFFIC PLANS FOR ADDITIONAL INFORMATION. SYMBOL FOR PAVEMENT REMOVAL IS NOT SHOWN FOR CLARITY. SEE PAVEMENT REMOVAL SCHEDULE FOR QUANTITY.



**TREE REMOVAL (6 TO 15 UNITS DIAMETER)**

STATION	OFFSET	UNIT
236+85.5	59.2' RT.	10
240+77.0	56.5' RT.	6
240+83.6	54.0' RT.	6
240+91.3	62.5' RT.	6
<b>TOTAL</b>		<b>28</b>

**TREE REMOVAL (OVER 15 UNITS DIAMETER)**

STATION	OFFSET	UNIT
238+04.3	47.8' LT.	28
<b>TOTAL</b>		<b>28</b>

**SALVAGING AND TRANSPLANTING TREES, SPECIAL**

ABBREV.	EXISTING STATION	EXISTING OFFSET	EACH
TP44	237+12.5	32.4' RT.	1
TP45	237+19.0	21.4' RT.	1
TP46	237+27.8	28.4' RT.	1
<b>TOTAL</b>			<b>3</b>

**PAVEMENT REMOVAL SCHEDULE**

LOCATION	BIT SURF REM BUTT JT (SQ YD)	PAVEMENT REM (SQ YD)	DRIVE PAVEMENT REM (SQ YD)	COMB CURB GUTTER REM (FOOT)
1000+60.0 TO 1000+70.0 LT. & RT.	18.2			
235+00.0 LT. TO 240+00.0 LT. & RT.		1177.9		
240+00.0 LT. & RT. TO 241+40.0 RT.		330.4		
236+89.8 LT. TO 244+04.6 RT. (TEMPORARY BITUMINOUS PAVEMENT)*		1187.9		
235+52.7 LT.			74.6	
236+05.4 LT.			94.5	
237+16.8 RT. TO 237+59.5 RT.			164.9	
237+44.0 LT.			16.7	
238+48.7 LT.			109.1	
238+87.5 LT. (TIMBERLAKE LN.)			99.6	
240+63.5 RT.			118.3	
241+60.4 RT.			9.8	
237+16.8 RT. TO 237+30.6 LT.				70.0
237+72.3 RT. TO 237+73.8 RT.				72.2
240+39.9 RT. TO 240+43.2 RT.				35.8
240+69.0 RT. TO 240+79.3 RT.				36.6
<b>TOTAL</b>	<b>18.2</b>	<b>2696.2</b>	<b>687.5</b>	<b>214.6</b>

\* TEMPORARY PAVEMENT IS CONSTRUCTED IN STAGE I AND REMOVED IN STAGES III AND IV.

- LEGEND**
- U.P. DND - UTILITY POLE DO NOT DISTURB
  - L.P. DND - LIGHT POLE DO NOT DISTURB
  - U.P. TBRBO - UTILITY POLE TO BE RELOCATED BY OTHERS
  - L.P. TBRBO - LIGHT POLE TO BE RELOCATED BY OTHERS
  - (M) - MAILBOX TO BE RELOCATED
  - (A) - STRUCTURE TO BE ADJUSTED
  - (R) - STRUCTURE TO BE REMOVED
  - (T) - TREE REMOVAL
  - (TP1) - EXISTING TREE TO BE TRANSPLANTED
  - (Hatched) - BITUMINOUS SURFACE REMOVAL-BUTT JOINT (SEE DETAIL SHEET)
  - (Hatched) - BITUMINOUS SURFACE REMOVAL 1/2" (SEE DETAIL SHEET)
  - (Hatched) - PAVEMENT REMOVAL
  - (Hatched) - DRIVEWAY PAVEMENT REMOVAL
  - (Hatched) - COMBINATION CURB AND GUTTER REMOVAL
  - (Hatched) - SIDEWALK REMOVAL
  - (X-X-X) - EXISTING FENCE
  - (X) - FENCE REMOVAL
  - (X) - REMOVAL ITEM (INCIDENTAL TO THE CONTRACT)

**PROPOSED  $\phi$  HAMILTON RD. CURVE DATA**  
P.I. STA. 242+65.28  
 $\Delta = 4^{\circ}34'36''$   
D = 147'26"  
T = 127.87'  
R = 3200.00'  
L = 255.61'  
E = 2.55'  
P.C. STA. 241+37.41  
P.T. STA. 243+93.02  
S.E. = NONE

ILLINOIS DEPARTMENT OF TRANSPORTATION  
**REMOVALS/RELOCATIONS PLAN**  
DATE : 3-05  
DRAWN BY : J.L.B.  
CHECKED BY : R.L.H.  
SCALE : 1"=20'