

SEE STORM SEWER OUTFALL PLAN AND PROFILE SHEET FOR CONTINUATION OF STORM SEWER FROM STR. NO. 58

MATCH EXIST. ENTRANCE 237+44.0, 55.5' LT. (ON SKEW) 20.0' P.E. (PCC) @ -8.7% CONSTRUCT ENTRANCE WITH CONCRETE APRON TO 34.7' LT. ON SKEW AT +4.0% AND TAPER CONCRETE TO 89.2' LT. ON SKEW AT -8.0%. SEE DETAIL SHEET AND CROSS SECTIONS.

MATCH EXIST. ENTRANCE 238+48.7, 89.2' LT. (ON SKEW) 16.0' P.E. (PCC) @ -8.0% CONSTRUCT ENTRANCE WITH CONCRETE APRON TO 34.7' LT. ON SKEW AT +4.0% AND TAPER CONCRETE TO 89.2' LT. ON SKEW AT -8.0%. SEE DETAIL SHEET AND CROSS SECTIONS.

SEC. 18, T.23 N., R.2 E., 3rd P.M. MCLEAN COUNTY, ILLINOIS

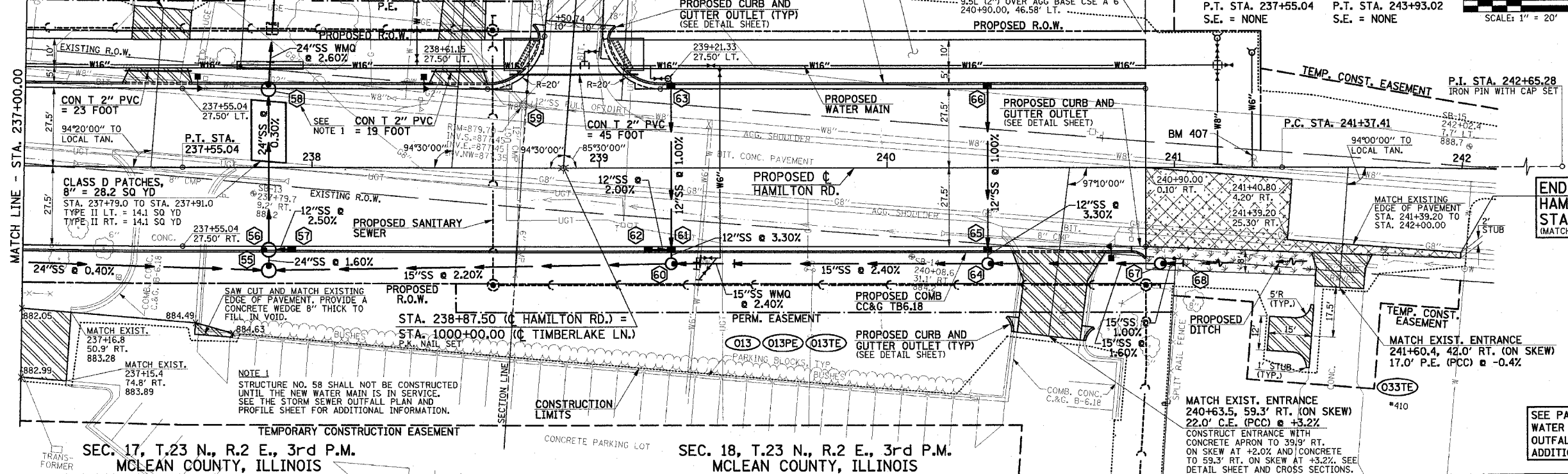
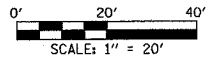
END IMPROVEMENTS HAMILTON RD. STA. 240+90.00

PROPOSED HAMILTON RD. CURVE DATA  
P.I. STA. 236+24.22  
D = 5°00'00"  
Δ = 1°54'35"  
T = 130.98'  
R = 3000.00'  
L = 261.80'  
E = 2.86'  
P.C. STA. 234+93.24  
P.T. STA. 237+55.04  
S.E. = NONE

PROPOSED HAMILTON RD. CURVE DATA  
P.I. STA. 242+65.28  
D = 4°34'36"  
Δ = 1°47'26"  
T = 127.87'  
R = 3200.00'  
L = 255.61'  
E = 2.55'  
P.C. STA. 241+37.41  
P.T. STA. 243+93.02  
S.E. = NONE

F.A.U. RTE.	SECTION	COUNTY	TOTAL SHEETS	SHEET NO.
6371	93-00295-02-PV	MCLEAN	117	40
STA. 237+00.00		TO STA. 242+00.00		

- CONTRACT NO. 87267
- LEGEND**
- PROPOSED SIDEWALK RAMP (SEE DETAIL)
  - PROPOSED TRANSITION PAVEMENT INCIDENTAL BITUMINOUS SURFACING (8" THICK) OVER AGGREGATE BASE COURSE, TYPE A 6"
  - PROPOSED PCC DRIVEWAY PAVEMENT (6" FOR P.E. - 8" FOR C.E.)
  - PROPOSED INCIDENTAL BITUMINOUS SURFACING (VARIABLE THICKNESS)
  - PROPOSED SODDING FOR DITCH LINING



END PROJECT HAMILTON RD. STA. 242+00.00 (MATCH EXISTING)

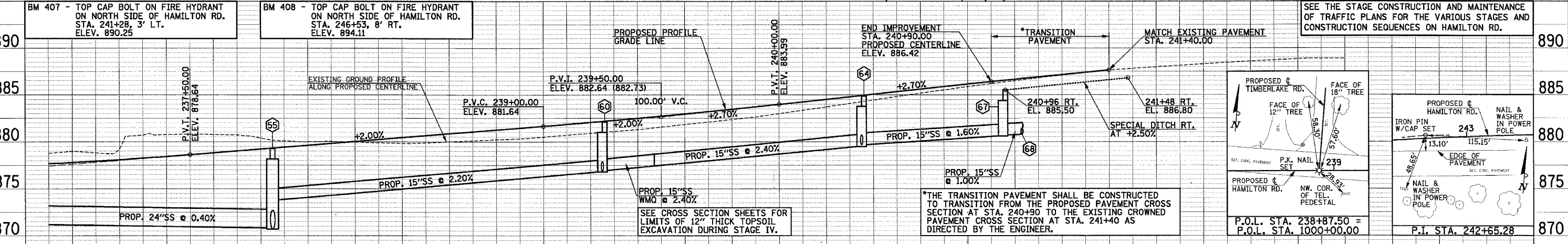
FOR REMOVAL/RELOCATION PLAN IN THIS AREA SEE SHEET NO. 30.

SEE HORIZONTAL ALIGNMENT LAYOUT AND CONTROL SHEETS FOR ADDITIONAL INFORMATION.

SEE SCHEDULE OF QUANTITIES FOR TYPICAL SECTION PAVEMENT PAY ITEMS AND THEIR LOCATIONS.

SEE PAVEMENT JOINTS, INTERSECTION DETAILS, WATER MAIN, SANITARY SEWER, AND STORM SEWER OUTFALL PLAN AND PROFILE SHEETS FOR ADDITIONAL INFORMATION.

SEE THE STAGE CONSTRUCTION AND MAINTENANCE OF TRAFFIC PLANS FOR THE VARIOUS STAGES AND CONSTRUCTION SEQUENCES ON HAMILTON RD.



STR. NO.	STRUCTURE TYPE	OFF-SET SIDE	STA. OF C/L 2 FT. OPENING	OFFSET OF C/L 2 FT. OPENING	STA. OF C/L STR.	OFFSET OF C/L STR.	EX. T/O FRAME/GRATE ELEV.	PR. T/O FRAME/GRATE ELEV.	INVERT IN FLAT SLAB TOP ELEV.	U.S. STR. NO.	INVERT OUT ELEV.	D.S. STR. NO.
55	RD MAN TA 5 DIA T1 OPEN	RT	237+85.00	34.50	237+85.00	36.00	879.30	878.20	870.82	52	870.70	56
56	RD MAN TA 5 DIA T3 F&G	RT	237+83.50	28.80	237+85.00	28.80	878.79	877.69	870.65	55	870.60	58
57	INLETS SPECIAL TYPE H	RT	237+93.00	28.60	237+93.00	28.60	878.95	---	874.44	---	874.80	56
58	MAN TA 5 DIA T3 F&G	LT	237+85.00	28.80	237+85.00	27.30	878.79	---	870.44	56	870.35	69
59	REMOVE INLET	LT	238+73.00	21.50	---	---	879.70	---	877.45	SOUTH	877.35	NORTH
60	RD MAN TA 4 DIA T1 OPEN	RT	239+26.00	33.50	239+25.00	33.50	882.10	881.00	876.90	61	876.80	55

STR. NO.	STRUCTURE TYPE	OFF-SET SIDE	STA. OF C/L 2 FT. OPENING	OFFSET OF C/L 2 FT. OPENING	STA. OF C/L STR.	OFFSET OF C/L STR.	EX. T/O FRAME/GRATE ELEV.	PR. T/O FRAME/GRATE ELEV.	INVERT IN FLAT SLAB TOP ELEV.	U.S. STR. NO.	INVERT OUT ELEV.	D.S. STR. NO.
61	INLETS SPECIAL TYPE H	RT	239+25.00	28.60	239+25.00	28.60	881.61	---	877.30	62	877.00	60
62	INLETS SPECIAL TYPE H	RT	239+17.00	28.60	239+17.00	28.60	881.44	---	877.04	63	877.00	61
63	INLETS SPECIAL TYPE H	LT	239+25.00	28.60	239+25.00	28.60	881.61	---	877.60	61	877.60	61
64	RD MAN TA 4 DIA T1 OPEN	RT	240+36.00	33.50	240+35.00	33.50	884.87	883.77	879.70	65	879.50	60
65	INLETS SPECIAL TYPE H	RT	240+35.00	28.60	240+35.00	28.60	884.38	---	879.84	66	879.80	64
66	INLETS SPECIAL TYPE H	LT	240+35.00	28.60	240+35.00	28.60	884.38	---	880.40	65	880.40	65
67	RD MAN TA 4 DIA T37M GRATE	RT	240+96.00	33.50	240+95.00	33.50	885.50	884.40	880.70	68	880.60	64
68	PIPE STUB PLUGGED	RT	---	---	241+03.00	33.50	---	---	880.76	67	---	---

LOCATION STR. - STR. OR STA., O.S.	STORM SEWER REM 12 (FOOT)	CONCRETE COLLAR (EACH)	SS 2 WMQ 15 (FOOT)	CL A 1 12 (FOOT)	CL A 2 12 (FOOT)	CL A 2 15 (FOOT)	CL A 2 24 (FOOT)	GRADE %	TRENCH BACKFILL (CU YD)
55 - 56							3	1.60	3.0
56 - 57								2.50	0.6
56 - 58								0.30	54.0
55 - 60								2.20	
59	142								28.8
60 - 61								3.30	0.7
61 - 62								2.00	0.7
61 - 63								1.00	10.7
60 - 64		1	20					2.40	
64 - 65								3.30	0.7
65 - 66								1.00	10.5
64 - 67								1.60	22.1
64 - 68								1.00	

CONCRETE COLLARS SHALL BE USED TO CONNECT STORM SEWERS OF DIFFERENT MATERIAL TYPES

