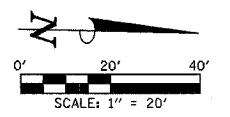


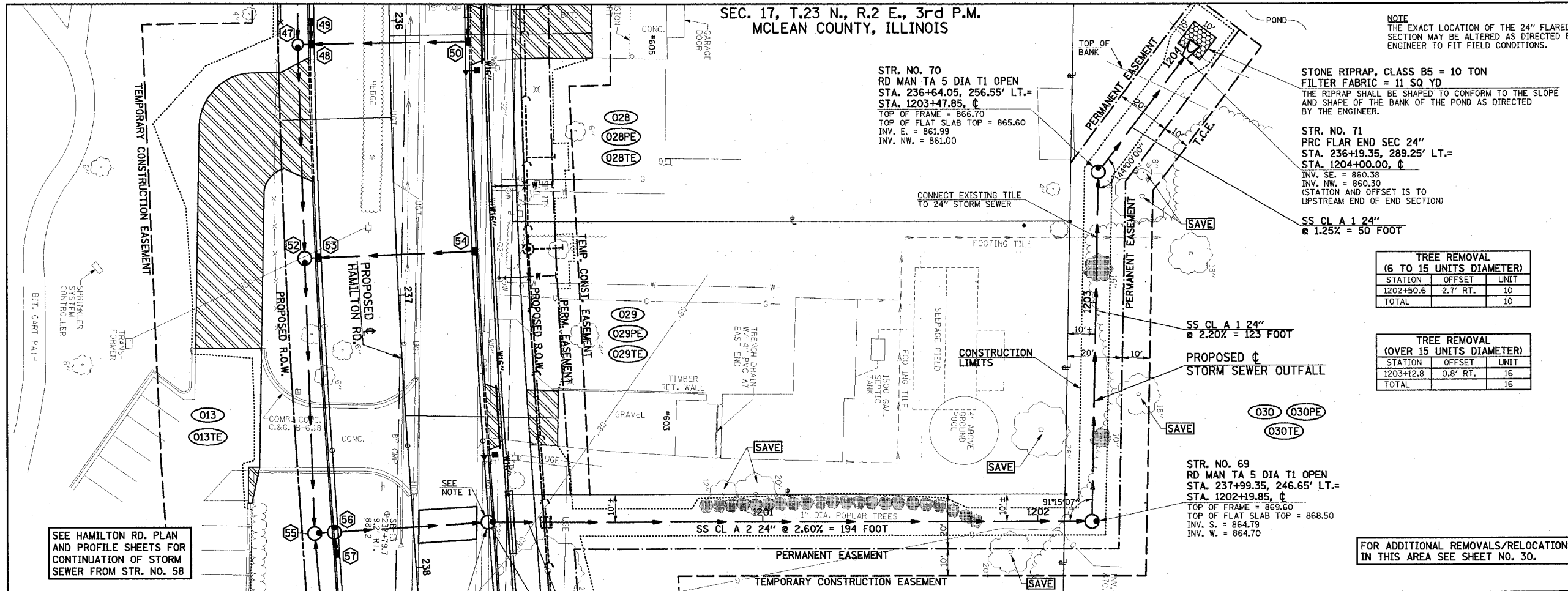
SEC. 17, T.23 N., R.2 E., 3rd P.M.  
MCLEAN COUNTY, ILLINOIS

F.A.U. RTE.	SECTION	COUNTY	TOTAL SHEETS	SHEET NO.
6371	93-00295-02-PV	MCLEAN	117	46
STA. 1200+00.00 TO STA. 1204+00.00			ILLINOIS	
CONTRACT NO. 87267				

NOTE  
THE EXACT LOCATION OF THE 24" FLARED END SECTION MAY BE ALTERED AS DIRECTED BY THE ENGINEER TO FIT FIELD CONDITIONS.



**LEGEND**  
 - PROPOSED PCC DRIVEWAY PAVEMENT (6" FOR P.E. - 8" FOR C.E.)



STONE RIPRAP, CLASS B5 = 10 TON  
 FILTER FABRIC = 11 SQ YD  
 THE RIPRAP SHALL BE SHAPED TO CONFORM TO THE SLOPE AND SHAPE OF THE BANK OF THE POND AS DIRECTED BY THE ENGINEER.

STR. NO. 71  
 PRC FLAR END SEC 24"  
 STA. 236+19.35, 289.25' LT.=  
 STA. 1204+00.00, C  
 INV. SE. = 860.38  
 INV. NW. = 860.30  
 (STATION AND OFFSET IS TO UPSTREAM END OF END SECTION)

TREE REMOVAL (6 TO 15 UNITS DIAMETER)		
STATION	OFFSET	UNIT
1202+50.6	2.7' RT.	10
TOTAL		10

TREE REMOVAL (OVER 15 UNITS DIAMETER)		
STATION	OFFSET	UNIT
1203+12.8	0.8' RT.	16
TOTAL		16

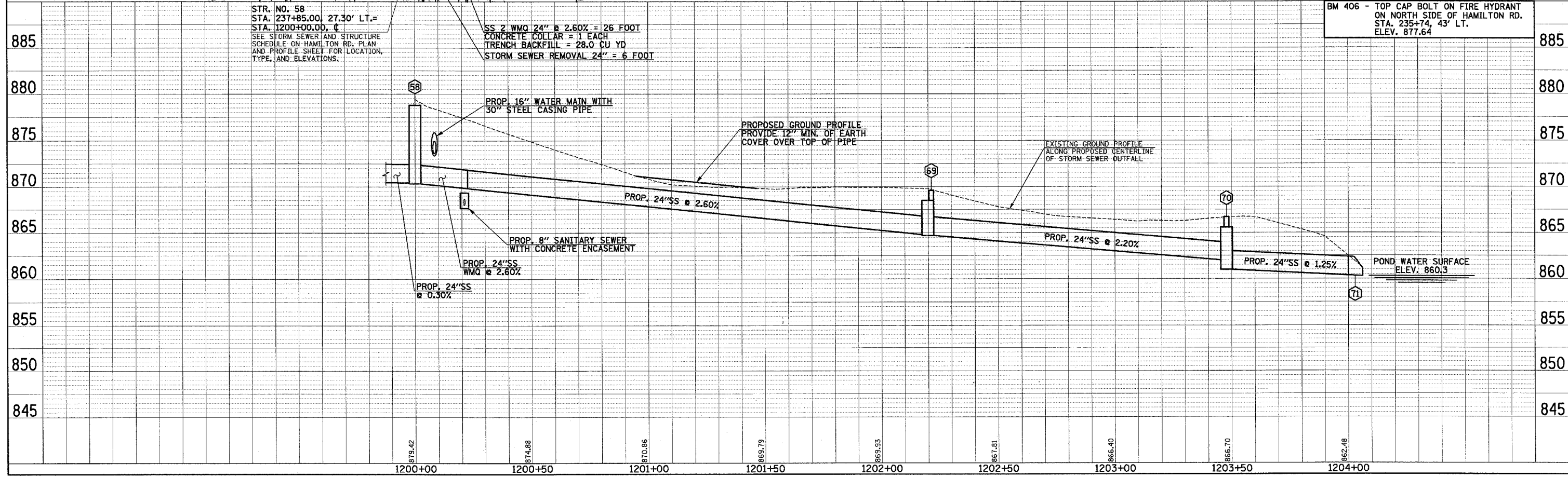
**NOTE 1**  
 STRUCTURE NO. 58 SHALL NOT BE CONSTRUCTED UNTIL THE NEW WATER MAIN IS IN SERVICE AND THE EXISTING WATER MAIN CAN BE ABANDONED. TO MAINTAIN DRAINAGE, THE STORM SEWER, TYPE 2 WMO 24" PIPE SHALL BE CONSTRUCTED CONTINUOUS THROUGH THE AREA WHERE STR. NO. 58 IS PLANNED AND TEMPORARILY CONNECTED TO THE NEW 24" STORM SEWER UNDER HAMILTON ROAD. AFTER THE NEW WATER MAIN IS IN SERVICE, A PORTION OF THE 24" STORM SEWER CAN BE REMOVED AND THE MAINHOLE CONSTRUCTED. THIS WORK WILL BE PAID FOR AT THE CONTRACT UNIT PRICE PER FOOT FOR STORM SEWER, TYPE 2, WATER MAIN QUALITY 24" AND STORM SEWER REMOVAL 24" AND NO ADDITIONAL COMPENSATION WILL BE ALLOWED.

FOR ADDITIONAL REMOVALS/RELOCATIONS IN THIS AREA SEE SHEET NO. 30.

SEE HORIZONTAL ALIGNMENT LAYOUT AND CONTROL SHEET FOR ADDITIONAL INFORMATION.

DATE	
BY	
PLANNED	
CHECKED	
NOTED	
FILED	

DATE	
BY	
PROFILING	
CHECKED	
NOTED	
FILED	



STR. NO. 58  
 STA. 237+85.00, 27.30' LT.=  
 STA. 1200+00.00, C  
 SEE STORM SEWER AND STRUCTURE SCHEDULE ON HAMILTON RD. PLAN AND PROFILE SHEET FOR LOCATION, TYPE, AND ELEVATIONS.

SS 2 WMO 24" @ 2.60% = 26 FOOT  
 CONCRETE COLLAR = 1 EACH  
 TRENCH BACKFILL = 28.0 CU YD  
 STORM SEWER REMOVAL 24" = 6 FOOT

BM 406 - TOP CAP BOLT ON FIRE HYDRANT ON NORTH SIDE OF HAMILTON RD. STA. 235+74.43' LT. ELEV. 877.64