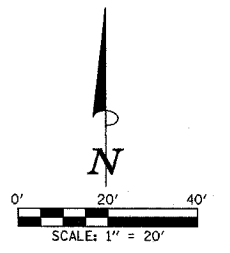


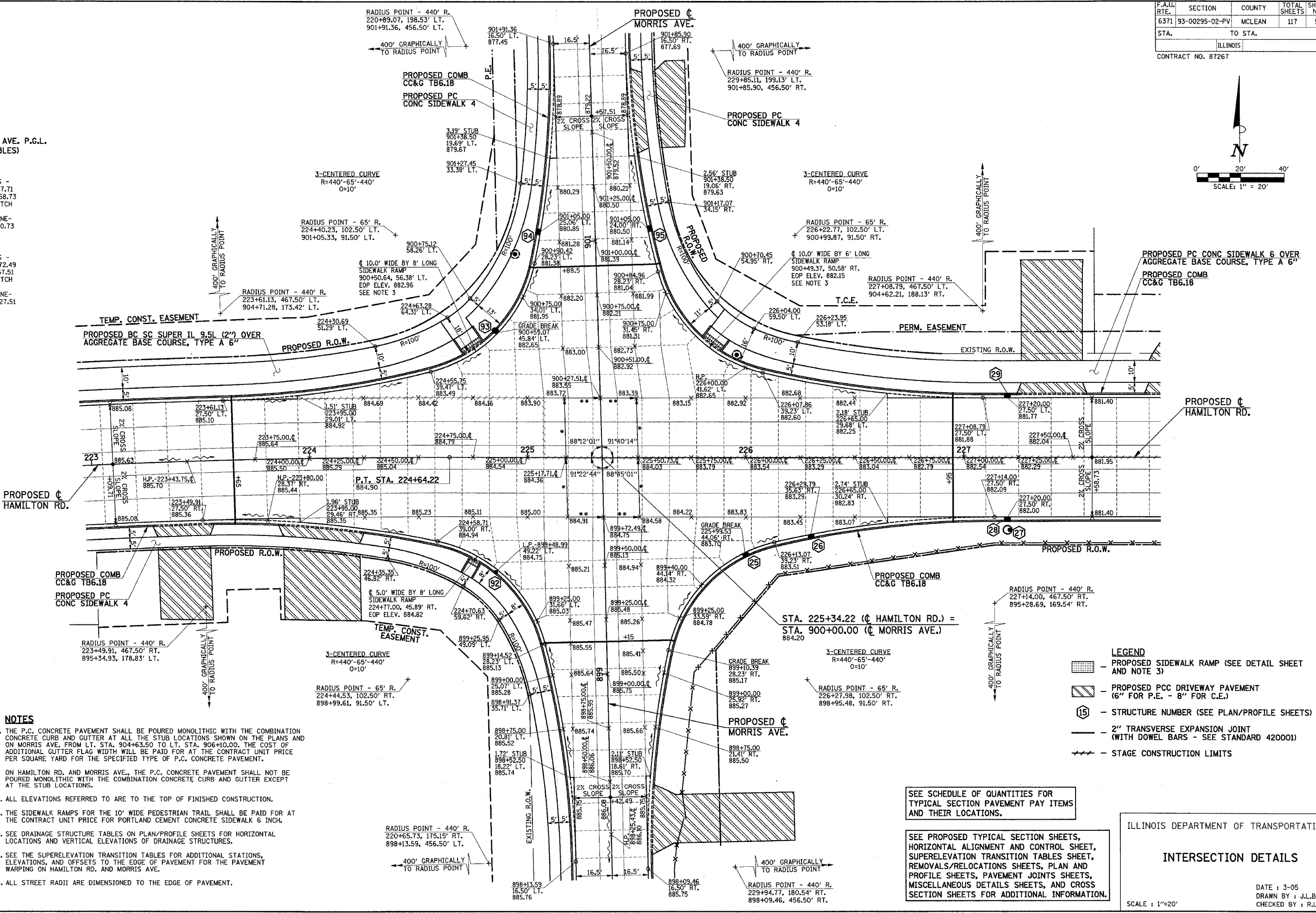
F.A.U. RTE.	SECTION	COUNTY	TOTAL SHEETS	SHEET NO.
6371	93-00295-02-PV	MCLEAN	117	51
STA.	TO STA.		ILLINOIS	
CONTRACT NO. 87267				



PROPOSED ϕ HAMILTON RD. CURVE DATA
P.I. STA. 223+20.04
 $\Delta = 5^{\circ}10'00''$
 $D = 1^{\circ}47'26''$
 $T = 144.38'$
 $R = 3200.00'$
 $L = 288.56'$
 $E = 3.26'$
P.C. STA. 221+75.66
P.T. STA. 224+64.22
S.E. = TO MATCH MORRIS AVE. P.G.L.
(SEE S.E. TRANSITION TABLES)

HAMILTON ROAD
SUPER ELEVATION TRANSITIONS -
STA. 223+09.71 TO STA. 225+17.71
STA. 225+50.73 TO STA. 227+58.73
* FULL SUPER ELEVATION TO MATCH INTERSECTING MORRIS AVENUE CENTERLINE PROFILE GRADE LINE - STA. 225+17.71 TO STA. 225+50.73

MORRIS AVENUE
SUPER ELEVATION TRANSITIONS -
STA. 898+42.49 TO STA. 899+72.49
STA. 900+27.51 TO STA. 901+57.51
** FULL SUPER ELEVATION TO MATCH INTERSECTING HAMILTON ROAD CENTERLINE PROFILE GRADE LINE - STA. 899+72.49 TO STA. 900+27.51



- NOTES**
1. THE P.C. CONCRETE PAVEMENT SHALL BE POURED MONOLITHIC WITH THE COMBINATION CONCRETE CURB AND GUTTER AT ALL THE STUB LOCATIONS SHOWN ON THE PLANS AND ON MORRIS AVE. FROM LT. STA. 904+63.50 TO LT. STA. 906+10.00, THE COST OF ADDITIONAL GUTTER FLAG WIDTH WILL BE PAID FOR AT THE CONTRACT UNIT PRICE PER SQUARE YARD FOR THE SPECIFIED TYPE OF P.C. CONCRETE PAVEMENT.
 2. ON HAMILTON RD. AND MORRIS AVE., THE P.C. CONCRETE PAVEMENT SHALL NOT BE POURED MONOLITHIC WITH THE COMBINATION CONCRETE CURB AND GUTTER EXCEPT AT THE STUB LOCATIONS.
 3. ALL ELEVATIONS REFERRED TO ARE TO THE TOP OF FINISHED CONSTRUCTION.
 4. THE SIDEWALK RAMP FOR THE 10' WIDE PEDESTRIAN TRAIL SHALL BE PAID FOR AT THE CONTRACT UNIT PRICE FOR PORTLAND CEMENT CONCRETE SIDEWALK 6 INCH.
 5. SEE DRAINAGE STRUCTURE TABLES ON PLAN/PROFILE SHEETS FOR HORIZONTAL LOCATIONS AND VERTICAL ELEVATIONS OF DRAINAGE STRUCTURES.
 6. SEE THE SUPERELEVATION TRANSITION TABLES FOR ADDITIONAL STATIONS, ELEVATIONS, AND OFFSETS TO THE EDGE OF PAVEMENT FOR THE PAVEMENT WARPING ON HAMILTON RD. AND MORRIS AVE.
 7. ALL STREET RADII ARE DIMENSIONED TO THE EDGE OF PAVEMENT.

SEE SCHEDULE OF QUANTITIES FOR TYPICAL SECTION PAVEMENT PAY ITEMS AND THEIR LOCATIONS.

SEE PROPOSED TYPICAL SECTION SHEETS, HORIZONTAL ALIGNMENT AND CONTROL SHEET, SUPERELEVATION TRANSITION TABLES SHEET, REMOVALS/RELOCATIONS SHEETS, PLAN AND PROFILE SHEETS, PAVEMENT JOINTS SHEETS, MISCELLANEOUS DETAILS SHEETS, AND CROSS SECTION SHEETS FOR ADDITIONAL INFORMATION.

ILLINOIS DEPARTMENT OF TRANSPORTATION

INTERSECTION DETAILS

DATE : 3-05
DRAWN BY : J.L.B.
CHECKED BY : R.L.H.

SCALE : 1"=20'