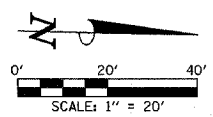


SEC. 17, T.23 N., R.2 E., 3rd P.M.
MCLEAN COUNTY, ILLINOIS

P.A.U. RTE.	SECTION	COUNTY	TOTAL SHEETS	SHEET NO.
6371	93-00295-02-PV	MCLEAN	117	69
STA. 891+50.00		TO STA. 896+50.00		
ILLINOIS				
CONTRACT NO. 87267				



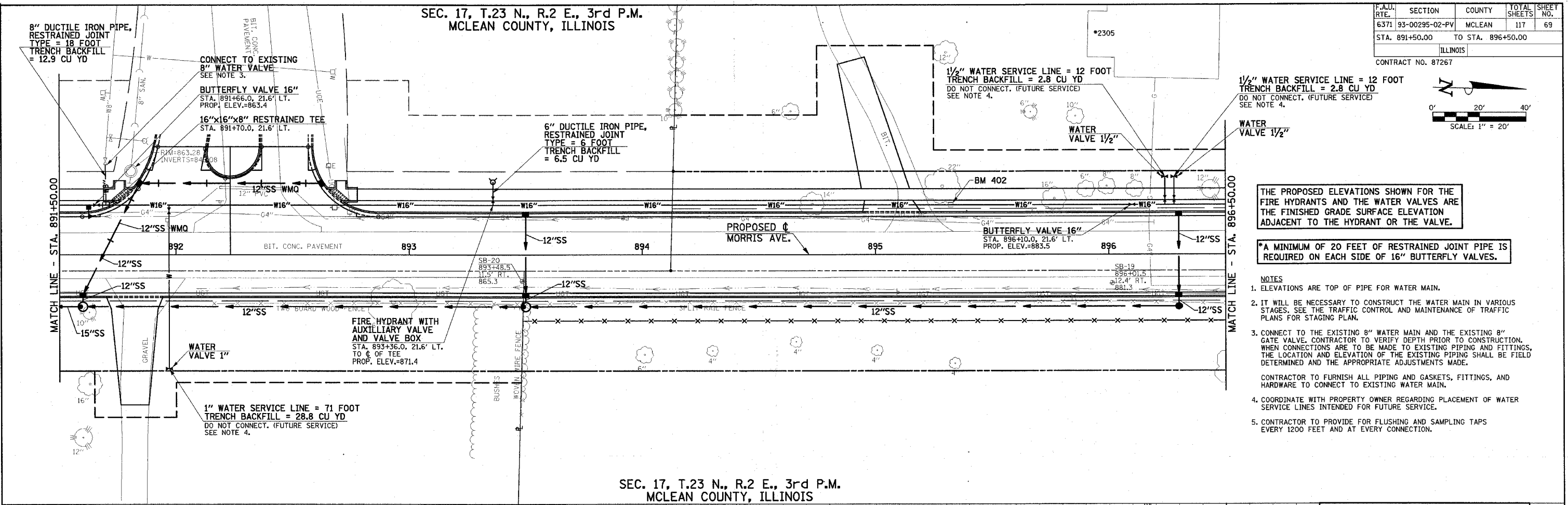
THE PROPOSED ELEVATIONS SHOWN FOR THE FIRE HYDRANTS AND THE WATER VALVES ARE THE FINISHED GRADE SURFACE ELEVATION ADJACENT TO THE HYDRANT OR THE VALVE.

*A MINIMUM OF 20 FEET OF RESTRAINED JOINT PIPE IS REQUIRED ON EACH SIDE OF 16" BUTTERFLY VALVES.

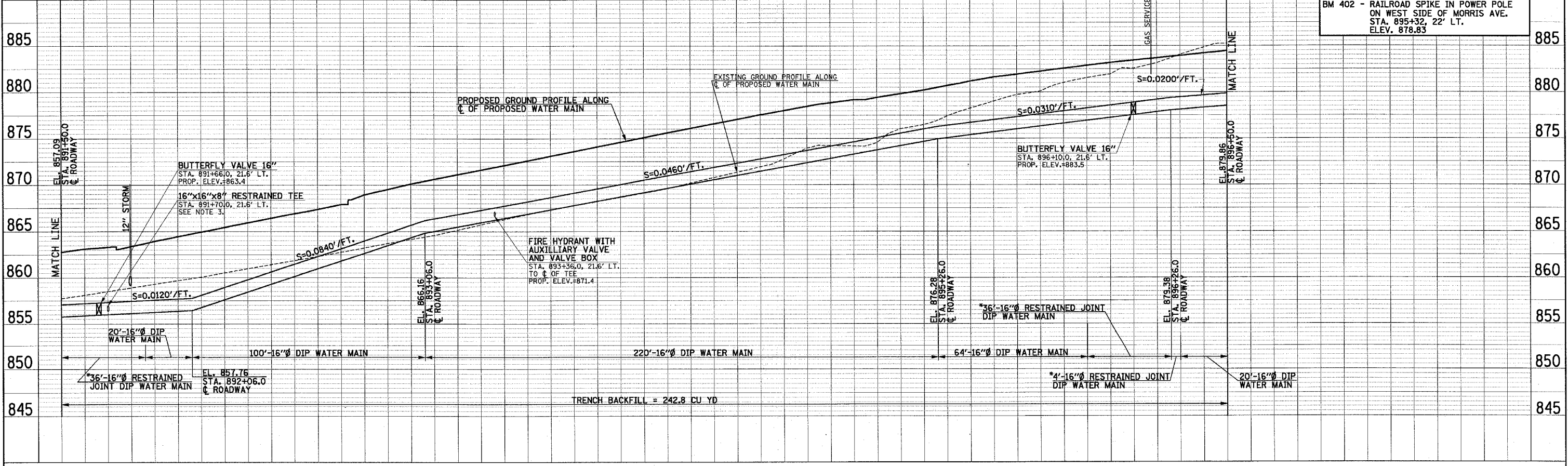
- NOTES
- ELEVATIONS ARE TOP OF PIPE FOR WATER MAIN.
 - IT WILL BE NECESSARY TO CONSTRUCT THE WATER MAIN IN VARIOUS STAGES. SEE THE TRAFFIC CONTROL AND MAINTENANCE OF TRAFFIC PLANS FOR STAGING PLAN.
 - CONNECT TO THE EXISTING 8" WATER MAIN AND THE EXISTING 8" GATE VALVE. CONTRACTOR TO VERIFY DEPTH PRIOR TO CONSTRUCTION. WHEN CONNECTIONS ARE TO BE MADE TO EXISTING PIPING AND FITTINGS, THE LOCATION AND ELEVATION OF THE EXISTING PIPING SHALL BE FIELD DETERMINED AND THE APPROPRIATE ADJUSTMENTS MADE.
CONTRACTOR TO FURNISH ALL PIPING AND GASKETS, FITTINGS, AND HARDWARE TO CONNECT TO EXISTING WATER MAIN.
 - COORDINATE WITH PROPERTY OWNER REGARDING PLACEMENT OF WATER SERVICE LINES INTENDED FOR FUTURE SERVICE.
 - CONTRACTOR TO PROVIDE FOR FLUSHING AND SAMPLING TAPS EVERY 1200 FEET AND AT EVERY CONNECTION.

DATE	BY	REVISION

DATE	BY	REVISION



SEC. 17, T.23 N., R.2 E., 3rd P.M.
MCLEAN COUNTY, ILLINOIS



BM 402 - RAILROAD SPIKE IN POWER POLE ON WEST SIDE OF MORRIS AVE. STA. 895+32.22' LT. ELEV. 878.83