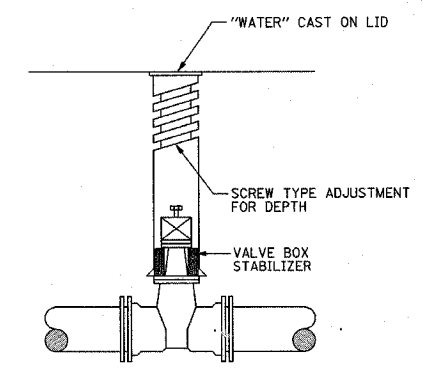


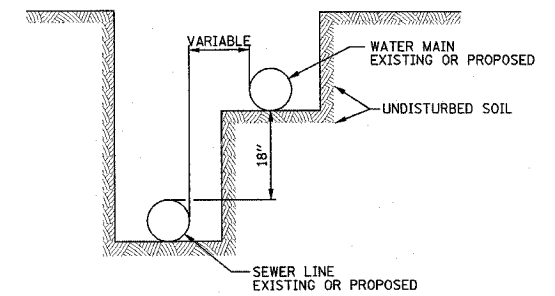
WATER/SEWER SEPARATION DETAIL
SCALE: NONE

- NOTES**
- THIS DETAIL IS TO SATISFY THE REQUIREMENTS FOR WATER AND SEWER SEPARATION SO THAT NO STORM SEWER JOINTS ARE WITHIN THE 10 FOOT HORIZONTAL SEPARATION LIMITS.
 - THIS WORK WILL NOT BE PAID FOR SEPARATELY AND SHALL BE INCLUDED IN THE COST OF THE STORM SEWERS.

THIS DETAIL APPLIES FOR STORM SEWERS AT THE FOLLOWING STATIONS:
 213+00, 214+75, 216+50, 218+25, 219+60, 220+80, 222+00, 227+20, 228+30, 229+50, 230+50, 233+50, 234+90, 236+08, 236+85, 239+42, 240+35, 888+85, 890+15, 893+50, 896+30, AND 902+80.



VALVE BOX INSTALLATION
SCALE: NONE

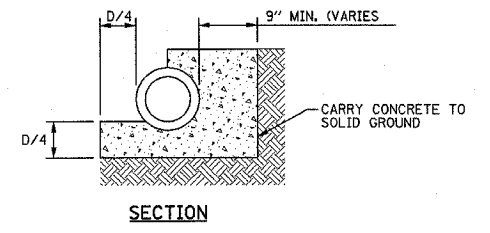
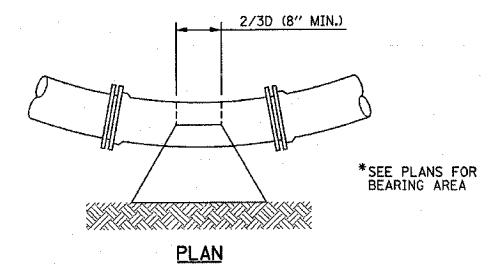


SEWER/WATER SEPARATION DETAIL
SCALE: NONE

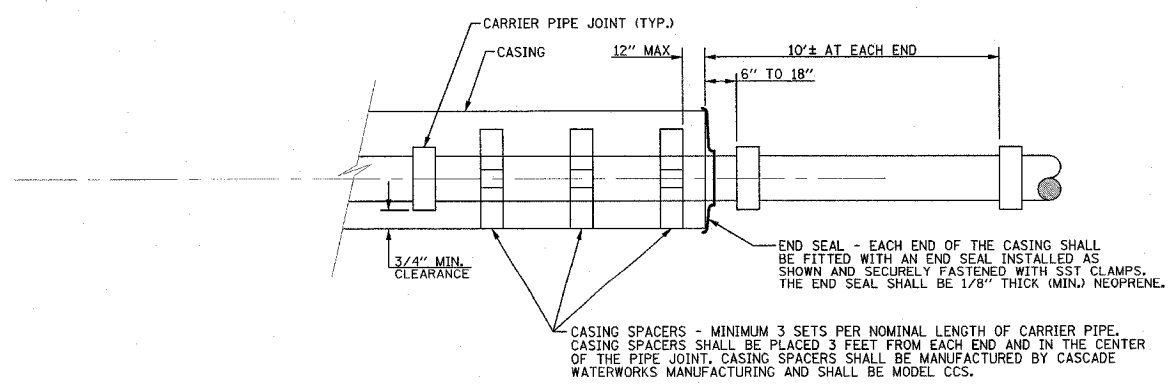
CROSSING SPECIFICATIONS

	CARRIER PIPE	CASING PIPE
CONTENTS TO BE HANDLED	WATER	CARRIER PIPE
PIPE MATERIAL	DUCTILE IRON PIPE (DIP)	WELDED STEEL
PIPE CLASS OR GRADE	52	B
ACTUAL WORKING PRESSURE	100 PSI	NONE
TYPE OF JOINT	RESTRAINED JOINT	WELDED
METHOD OF INSTALLATION	---	BORE & JACK OR OPEN CUT
LINING - INTERIOR	---	AWWA C203 COAL TAR
LINING - EXTERIOR	---	30 MIL HEAVY DUTY COAL TAR
NOMINAL INSIDE DIAMETER - PIPE	8", 12", OR 16"	20", 24", 30"
OUTSIDE DIAMETER - JOINT	UP TO 14.4", 19.1", 24"	---
PIPE WALL THICKNESS	0.33", 0.37", 0.40"	0.375" MIN

- CASING PIPE SHALL CONFORM TO ASTM A139, GRADE B, WITH 60,000 PSI MINIMUM TENSILE STRENGTH AND BE OF LEAKPROOF CONSTRUCTION.
- THE BORE DIAMETER SHALL BE ESSENTIALLY THE SAME SIZE AS THE OUTSIDE DIAMETER OF THE CASING PIPE. IF VOIDS DEVELOP DURING INSTALLATION, REMEDIAL MEASURES AS APPROVED BY THE ENGINEER SHALL BE UNDERTAKEN. BORING OPERATIONS SHALL BE CONTINUOUS.



THRUST BLOCK FOR HORIZONTAL BEND DETAIL
SCALE: NONE



CASING PIPE DETAIL
SCALE: NONE

ILLINOIS DEPARTMENT OF TRANSPORTATION

WATER MAIN DETAILS

DATE : 3-05
 DRAWN BY : J.L.B.
 CHECKED BY : R.L.H.

SCALE : NONE