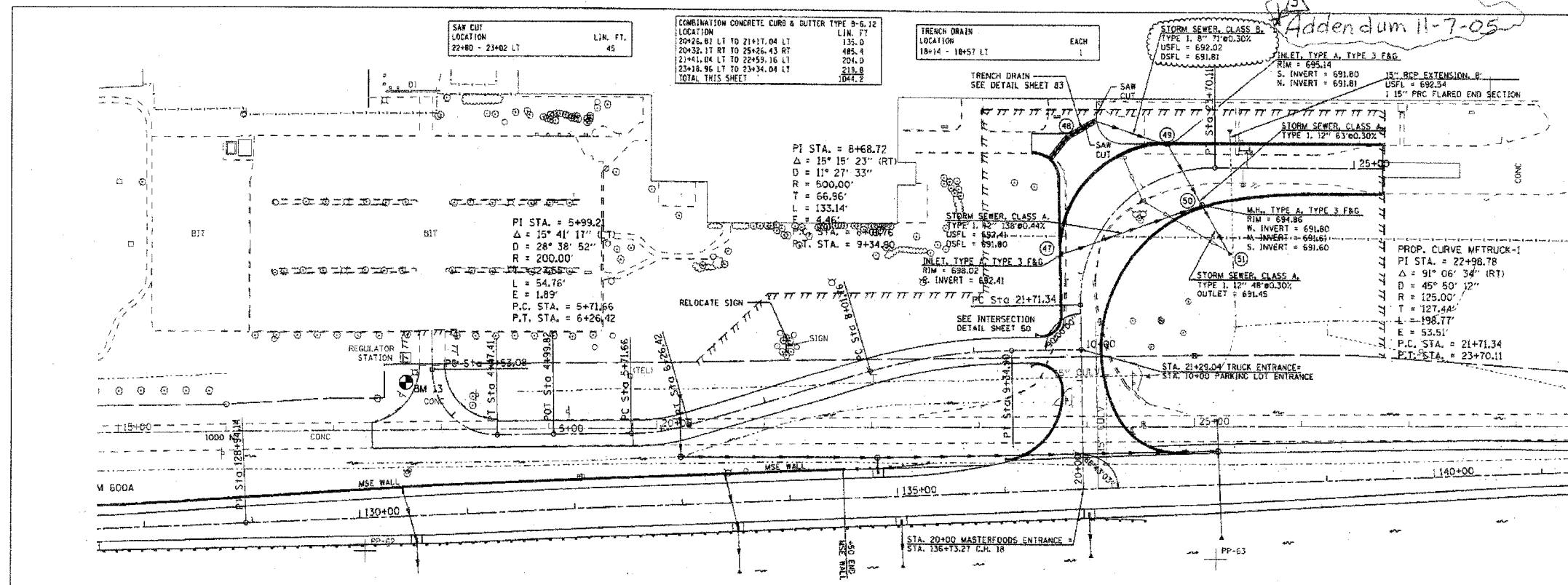


CONTRACT = 91292  
 SHEET NO. 157 OF 50  
 COUNTY COLES  
 ILLINOIS FED. AID PROJECT

Addendum 11-7-05



PROF. DRIVEWAY PAVEMENT, B'  
 LOCATION 50.00'  
 136+08.22 LT TO 132+60.06 LT 4509.4

BITUMINOUS PRIME COAT  
 LOCATION 84.1  
 130+13.60 LT TO 132+60.06 LT

INCIDENTAL BITUMINOUS SURFACING  
 LOCATION 70.6  
 130+13.60 LT TO 132+60.06 LT

