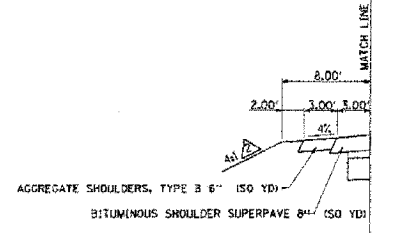


CONTRACT 91292			
F.A.S. RTE. 1	SECTION	COUNTY	TOTAL SHEET NO.
642 199-00124-08-PV		COLES	157 6
STA.	TO STA.		
FED. ROAD DIST. NO.	ILLINOIS	FED. AID PROJECT	

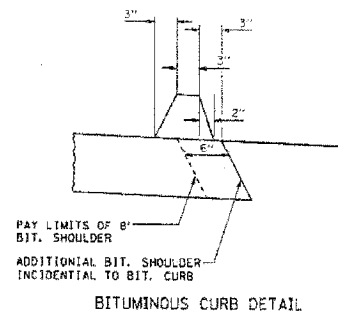
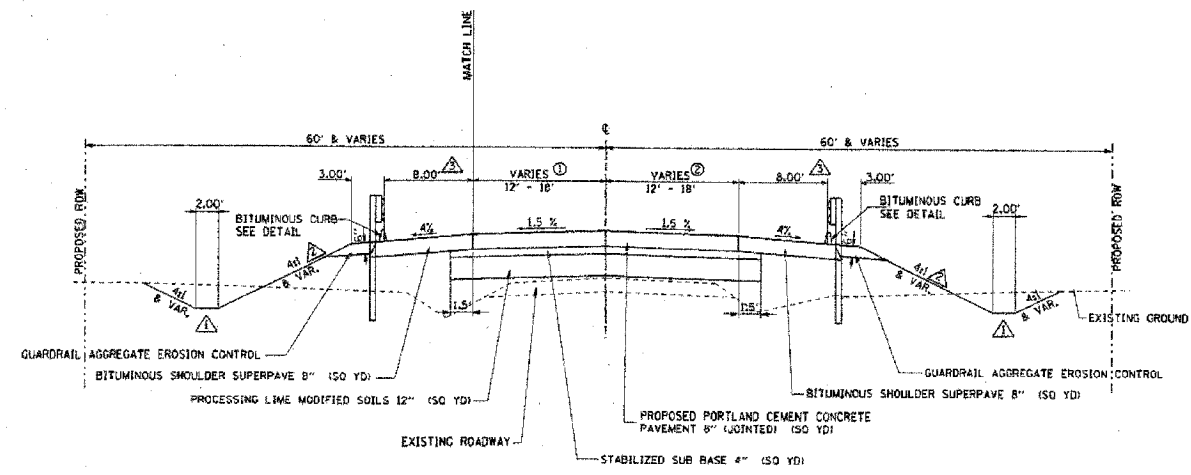
③ PROPOSED TYPICAL CROSS SECTION
COUNTY HIGHWAY 18 (BA) = BRIDGE APPROACH

18.00'	TO 12.00'	STA 108+16.81 TO STA 119+54.52
18.00'	TO 12.00'	STA 110+54.52 TO STA 115+44.36
12.00'		STA 115+44.36 TO STA 120+00.67
18.00'	TO 30.00'	STA 134+50.00 TO STA 135+00.19
18.00'	TO 30.00'	STA 135+00.19 TO STA 136+06.79
30.00'		STA 136+06.79 TO STA 137+31.00

18.00'	TO 12.00'	STA 108+16.81 TO STA 111+96.74
18.00'	TO 12.00'	STA 111+96.74 TO STA 117+33.66
12.00'		STA 117+33.66 TO STA 120+00.67
18.00'		STA 134+50.00 TO STA 137+31.00



LT STA 108+11.77 TO STA 109+76.85
LT STA 135+32.37 TO STA 137+28.00



- NOTES:
 ⚠ SEE CROSS SECTIONS FOR DITCH ELEVATIONS
 ⚠ FOR FILL SLOPES GREATER THAN 25', USE 2:1 SLOPES WITH GUARDRAIL.
 ⚠ FLARE SHOULDER OUT WITH GUARDRAIL AT TERMINAL END SECTIONS

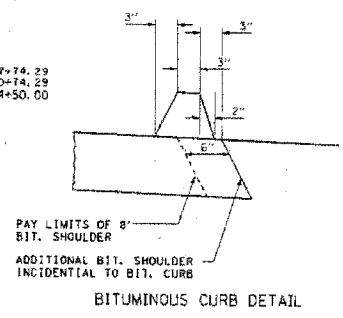
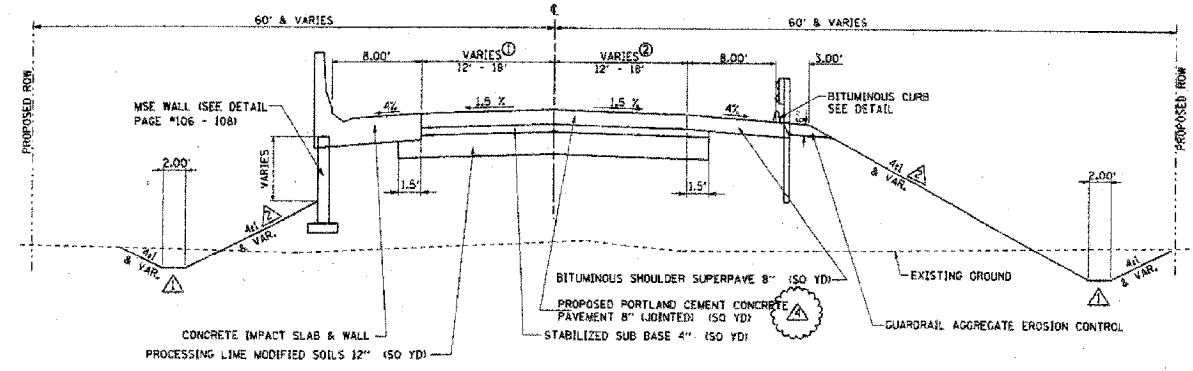
② STA 108+11.77 TO STA 120+00.67 (BA)
④ STA 134+50.00 TO STA 137+31.00 ②

STRUCTURAL DESIGN TRAFFIC (2015) = 5080
 PV = 20%, SU = 6%, MU = 4%
 PERCENT OF STRUCTURAL DESIGN TRAFFIC IN DESIGN LANE = 50%
 CLASS II ROAD
 TRAFFIC FACTOR = 1.13
 EXISTING A.D.T. = 2,300 V.P.D. STA. 134+50.07 TO STA. 137+28.00
 EXISTING A.D.T. = 1,200 V.P.D. STA. 108+11.77 TO STA. 120+00.67

④ PROPOSED TYPICAL CROSS SECTION
COUNTY HIGHWAY 18 (BA) = BRIDGE APPROACH

12.00'	TO 18.00'	STA 123+71.40 TO STA 127+74.29
12.00'	TO 18.00'	STA 127+74.29 TO STA 130+74.29
18.00'		STA 130+74.29 TO STA 134+50.00

12.00'	TO 18.00'	STA 123+71.40 TO STA 127+74.29
12.00'	TO 18.00'	STA 127+74.29 TO STA 130+74.29
18.00'		STA 130+74.29 TO STA 134+50.00



- NOTES:
 ⚠ SEE CROSS SECTIONS FOR DITCH ELEVATIONS
 ⚠ FOR FILL SLOPES GREATER THAN 25', USE 2:1 SLOPES WITH GUARDRAIL.
 ⚠ FLARE SHOULDER OUT WITH GUARDRAIL AT TERMINAL END SECTIONS
 ⚠ USE CONTINUOUSLY REINFORCED CONCRETE PAVEMENT 8" FROM STATION 123+75.50 TO STATION 123+97.88

(BA) STA 123+71.40 TO STA 134+50.00 ③

⚠ * Addendum 11-7-05

STRUCTURAL DESIGN TRAFFIC (2015) = 5080
 PV = 20%, SU = 6%, MU = 4%
 PERCENT OF STRUCTURAL DESIGN TRAFFIC IN DESIGN LANE = 50%
 CLASS II ROAD
 TRAFFIC FACTOR = 1.13
 EXISTING A.D.T. = 2,300 V.P.D.

REVISIONS	
NAME	DATE

ILLINOIS DEPARTMENT OF TRANSPORTATION
PROPOSED TYPICAL SECTIONS
COUNTY HIGHWAY 18
 SCALE: VERT. DATE #DATE#
 DRAWN BY SJF
 CHECKED BY MED

F.A.S. RTE.	SECTION	COUNTY	TOTAL SHEETS	SHEET NO.
642	99-00124-01-PV	COLES	157	14
STA.	TO STA.			
FED. ROAD DIST. NO.	ILLINOIS	FED. AID PROJECT		

SUMMARY OF QUANTITIES

PAY LIMITS = 102+50 TO 141+25 C.H. 18 (BRIDGE & APPROACHES ONLY)
 ZCC ELIGIBLE
 PAY LIMITS = 102+50 TO 141+25 C.H. 18
 ZCC ELIGIBLE
 PAY LIMITS = 100+00 TO 102+50 C.H. 18
 141+25 TO 168+00 C.H. 18

ITEM NUMBER	ITEM	UNIT	TOTAL QUANTITY	X571-2A (1)	J000-2A	X571-2A (2)
20200100	EARTH EXCAVATION	CU YD	162453	141629	14934	5890
20400800	FURNISHED EXCAVATION	CU YD	91921	84782	3603	3536
20700400	POROUS GRANULAR EMBANKMENT (SPECIAL)	CU YD	362	362		
20800150	TRENCH BACKFILL	CU YD	163	154		9
21301052	EXPLORATION TRENCH 52" DEPTH	FOOT	5565	3420		2145
25000200	SEEDING, CLASS 2	ACRE	34.1	8.9	17.5	7.7
25000350	SEEDING, CLASS 7	ACRE	34.1	8.9	17.5	7.7
25000400	NITROGEN FERTILIZER NUTRIENT	POUND	3065	801	1575	689
25000500	PHOSPHORUS FERTILIZER NUTRIENT	POUND	3065	801	1575	689
25000600	POTASSIUM FERTILIZER NUTRIENT	POUND	3065	801	1575	689
25000700	AGRICULTURAL GROUND LIMESTONE	TON	68	17.8	35	15.2
25000750	MOWING	ACRE	34.1			34.1
25100115	MULCH, METHOD 2	ACRE	68.1	17.8	35	15.3
25100630	EROSION CONTROL BLANKET	SQ YD	19743	18728		1015
28000250	TEMPORARY EROSION CONTROL SEEDING	POUND	3290			3290
28000300	TEMPORARY DITCH CHECKS	EACH	64	11	41	12
28000400	PERIMETER EROSION BARRIER	FOOT	4314	2987	430	897
28000500	INLET AND PIPE PROTECTION	EACH	25	9	2	14
28100107	STONE RIPRAP, CLASS A4	SQ YD	18			18
28200200	FILTER FABRIC	SQ YD	18			18
30200650	PROCESSING MODIFIED SOIL 12"	SQ YD	29761	12128	6246	11387
30201500	LIME	TON	670	273	141	256
31101200	SUBBASE GRANULAR MATERIAL, TYPE B 4"	SQ YD	2502		2219	283
31200100	STABILIZED SUB-BASE 4"	SQ YD	29761	12128	6246	11387
35100100	AGGREGATE BASE COURSE, TYPE A	TON	137	18		119
40200800	AGGREGATE SURFACE COURSE, TYPE B	TON	154	154		
40600100	BITUMINOUS MATERIALS (PRIME COAT)	GALLON	1260		1260	
40600300	AGGREGATE (PRIME COAT)	TON	18		18	
40600980	BITUMINOUS SURFACE REMOVAL - BUTT JOINT	SQ YD	160		160	
40600990	TEMPORARY RAMP	SQ YD	112		112	
40800010	BITUMINOUS MATERIALS (PRIME COAT)	GALLON	133	93		40
40800040	INCIDENTAL BITUMINOUS SURFACING	TON	152	106		46
42000301	PORTLAND CEMENT CONCRETE PAVEMENT 8" (JOINTED)	SQ YD	27578	8816	7377	11385
42001165	BRIDGE APPROACH PAVEMENT	SQ YD	138	138		
42001300	PROTECTIVE COAT	SQ YD	28080	28080		
42001400	BRIDGE APPROACH PAVEMENT (SPECIAL)	SQ YD	141		141	
42001420	BRIDGE APPROACH PAVEMENT CONNECTOR (PCC)	SQ YD	61	61		
42100100	Continuously Reinforced Concrete Pavement 8"	SQ YD	60	60		
42300400	PORTLAND CEMENT CONCRETE DRIVEWAY PAVEMENT, 8 INCH	SQ YD	5527		5527	
42100100	Pavement Reinforcement	SQ YD	60	60		
44000100	PAVEMENT REMOVAL	SQ YD	10615	7327	1096	2192
44000200	DRIVEWAY PAVEMENT REMOVAL	SQ YD	4707		2719	1988
44000500	COMBINATION CURB AND GUTTER REMOVAL	FOOT	1458	155	331	972
44002500	GUTTER OUTLET REMOVAL	EACH	2	2		
44002805	ISLAND REMOVAL	SQ FT	415	415		
44003100	MEDIAN REMOVAL	SQ FT	992	992		
44004250	PAVED SHOULDER REMOVAL	SQ YD	130		130	
44004300	PAVEMENT BREAKING	SQ YD	2822	2822		
44100300	PAVEMENT REPLACEMENT (SPECIAL)	SQ YD	86	86		
44200089	PAVEMENT PATCHING, TYPE I, 8"	SQ YD	36	9		27
44200094	PAVEMENT PATCHING, TYPE II, 8"	SQ YD	15	15		
44300200	STRIP REFLECTIVE CRACK CONTROL TREATMENT	FOOT	2730		2730	
48101500	AGGREGATE SHOULDERS, TYPE B 6"	SQ YD	4564	387	2439	1738
48201000	BITUMINOUS SHOULDERS	TON	47		47	
48202600	BITUMINOUS SHOULDERS SUPERPAVE 8"	SQ YD	7940	5703	1676	561
48300300	PORTLAND CEMENT CONCRETE SHOULDERS 8"	SQ YD	142	142		
50104400	CONCRETE HEADWALL REMOVAL	EACH	2	2		
50105220	PIPE CULVERT REMOVAL	FOOT	1261	444		817
50200100	STRUCTURE EXCAVATION	CU YD	618	312		306
50300100	FLOOR DRAINS	EACH	8	4		4
50300225	CONCRETE STRUCTURES	CU YD	767	75	336	356
50300255	CONCRETE SUPERSTRUCTURES	CU YD	486.8	261		225.8
50300260	BRIDGE DECK GROOVING	SQ YD	1337	722		615

⚠ 30200650
 ⚠ 30201500
 ⚠ 42000301
 ⚠ 42001420
 ⚠ 42100100
 ⚠ 42300400
 ⚠ 42100100
 ⚠ 44000100
 ⚠ 48202600

⚠ Addendum 11-7-05
 ⚠ Addendum 10-31-05
 ⚠ Addendum 11-2-05

REVISIONS		ILLINOIS DEPARTMENT OF TRANSPORTATION
NAME	DATE	
		<p align="center">SUMMARY OF QUANTITIES</p> <p>SCALE: VERT. DRAWN BY RLH HORIZ. CHECKED BY MED DATE 09/02/2005</p>

TUG PROJ. #3191022-5
 ... SHEET - W.dgn
 09/02/2005

F.A.S. RTE.	SECTION	COUNTY	TOTAL SHEETS	SHEET NO.
642	99-00124-01-PV	COLES	157	15
STA.		TO STA.		
FED. ROAD DIST. NO.		ILLINOIS	FED. AID PROJECT	

SUMMARY OF QUANTITIES

PAY LIMITS = 141+25 C.H. 18
102+50 TO 141+25 C.H. 18
(BRIDGE & APPROACHES ONLY)
ZCC ELIGIBLE

PAY LIMITS = 141+25 C.H. 18
102+50 TO 141+25 C.H. 18
ZCC ELIGIBLE

PAY LIMITS = 100+00 TO 102+50 C.H. 18
141+25 TO 166+00 C.H. 18
ZCC ELIGIBLE

ITEM NUMBER	ITEM	UNIT	TOTAL QUANTITY	X571-2A (1)	5000-2A	X571-2A (2)
50300300	PROTECTIVE COAT	SQ YD	1672	903		769
50500105	FURNISHING AND ERECTING STRUCTURAL STEEL	L SUM	1	0.5		0.5
50500505	STUD SHEAR CONNECTORS	EACH	2400	1296		1104
50800105	REINFORCEMENT BARS	POUND	250	57		193
50800205	REINFORCEMENT BARS, EPOXY COATED	POUND	202620	107815		94805
51100100	SLOPE WALL, 4"	SO YD	825	428		397
51201900	FURNISHING STEEL PILES HP 14X89	FOOT	2687	1451		1236
51202700	DRIVING STEEL PILES	FOOT	2687	1451		1236
51203900	TEST PILE, STEEL HP 14X89	EACH	2	2		
51500100	NAME PLATES	EACH	1	1		
54200430	PIPE CULVERTS, TYPE 1 RCCP 15"	FOOT	8		8	
54200433	PIPE CULVERTS, TYPE 1 RCCP 18"	FOOT	144		16	128
54200439	PIPE CULVERTS, TYPE 1 RCCP 24"	FOOT	296	296		
54200451	PIPE CULVERTS, TYPE 1 RCCP 36"	FOOT	80			80
54201291	PIPE CULVERTS, TYPE 2 RCCP 36"	FOOT	98	98		
54204861	PIPE CULVERTS, TYPE 7 RCCP 36"	FOOT	160	160		
54207171	PIPE CULVERTS, TYPE 1, REINFORCE CONCRETE - ELLIPTICAL, EQ RS 36"	FOOT	292	64	152	76
54207783	PIPE CULVERTS, TYPE 1, CORRUGATED STEEL OR ALUMINUM, EQ RS 18"	FOOT	43	43		
54207789	PIPE CULVERTS, TYPE 1, CORRUGATED STEEL OR ALUMINUM, EQ RS 24"	FOOT	283	88		195
54207801	PIPE CULVERTS, TYPE 1, CORRUGATED STEEL OR ALUMINUM, EQ RS 36"	FOOT	55			55
5421D012	PIPE CULVERTS, CLASS D, TYPE 1 12" (TEMPORARY)	FOOT	222	68		154
5421D024	PIPE CULVERTS, CLASS D, TYPE 1 24" (TEMPORARY)	FOOT	70	70		
54213657	PRECAST REINFORCED CONCRETE FLARED END SECTIONS 12"	EACH	1			1
54213660	PRECAST REINFORCED CONCRETE FLARED END SECTIONS 15"	EACH	1		1	
54213663	PRECAST REINFORCED CONCRETE FLARED END SECTIONS 18"	EACH	6		2	4
54213669	PRECAST REINFORCED CONCRETE FLARED END SECTIONS 24"	EACH	5	4		1
54213681	PRECAST REINFORCED CONCRETE FLARED END SECTIONS 36"	EACH	8	4		4
54214731	PRECAST REINFORCED CONCRETE FLARED END SECTIONS - ELL EQ RS 36"	EACH	8	2	4	2
54215547	METAL END SECTIONS 12"	EACH	17	17		
54215763	METAL END SECTIONS, EQUIVALENT ROUND-SIZE 18"	EACH	2	2		
54215769	METAL END SECTIONS, EQUIVALENT ROUND-SIZE 24"	EACH	12	4		8
54215781	METAL END SECTIONS, EQUIVALENT ROUND-SIZE 36"	EACH	2			2
550A0030	STORM SEWERS, CLASS A, TYPE 1 8"	FOOT	71		71	
550A0050	STORM SEWERS, CLASS A, TYPE 1 12"	FOOT	486	237	249	
550A0120	STORM SEWERS, CLASS A, TYPE 1 24"	FOOT	233	233		
550A0410	STORM SEWERS, CLASS A, TYPE 2 24"	FOOT	317	317		
550B0160	STORM SEWERS, CLASS B, TYPE 1 36"	FOOT	1144			1144
55100500	STORM SEWER REMOVAL 12"	FOOT	197	61	136	
60100945	PIPE DRAINS 12"	FOOT	1032	1032		
60218500	MANHOLES, TYPE A, 4' DIAMETER, TYPE 3 FRAME AND GRATE	EACH	1		1	
60221100	MANHOLES, TYPE A, 5'-DIAMETER, TYPE 1 FRAME, CLOSED LID	EACH	3	1		2
60221700	MANHOLES, TYPE A, 5'-DIAMETER, TYPE 8 GRATE	EACH	2	1		1
60223100	MANHOLES, TYPE A, SPECIAL, 5'-DIAMETER, TYPE 1 FRAME, CLOSED LID	EACH	1	1		
60235700	INLETS, TYPE A, TYPE 3 FRAME AND GRATE	EACH	2		2	
60500060	REMOVE INLETS	EACH	7	5	2	
60600095	CLASS SI CONCRETE (OUTLET)	CU YD	4		4	
60603500	COMBINATION CONCRETE CURB AND GUTTER, TYPE B-6.06	FOOT	11		11	
60603800	COMBINATION CONCRETE CURB AND GUTTER, TYPE B-6.12	FOOT	1044		1044	
60605000	COMBINATION CONCRETE CURB AND GUTTER, TYPE B-6.24	FOOT	453		453	
60605500	COMBINATION CONCRETE CURB AND GUTTER, TYPE B-6.24 (VMGF)	FOOT	18		18	
60614600	PAVED DITCH (SPECIAL)	FOOT	50			50
60618300	CONCRETE MEDIAN SURFACE, 4 INCH	SQ FT	89		89	
60900515	CONCRETE THRUST BLOCKS	EACH	18	18		
61000115	TYPE E INLET BOX, STANDARD 610001	EACH	14	14		
61000120	TYPE E INLET BOX, STANDARD 610001 (SPECIAL)	EACH	9	9		
61100605	MISCELLANEOUS CONCRETE	CU YD	16	16		
61101005	STORM SEWER PROTECTED, CLASS A, 4"	FOOT	120			120
61101007	STORM SEWER PROTECTED, CLASS A, 6"	FOOT	120			120
61101009	STORM SEWER PROTECTED, CLASS A, 8"	FOOT	120			120
61101011	STORM SEWER PROTECTED, CLASS A 10"	FOOT	120			120
61101013	STORM SEWER PROTECTED, CLASS A, 12"	FOOT	120			120



③ Addendum 11-7-05

REVISIONS		ILLINOIS DEPARTMENT OF TRANSPORTATION
NAME	DATE	
		<p align="center">SUMMARY OF QUANTITIES</p> <p>SCALE: VERT. DRAWN BY RLH HORIZ. CHECKED BY MED DATE 09/02/2005</p>

TUG PROJ. #13197022-5
 ...SHEET-W.GDP
 09/02/2005

NOTE: SEE RIGHT OF WAY PLAN SHEETS FOR RIGHT OF WAY AND EASEMENT INFORMATION

PROP. CURVE CURV2
 PI STA. = 113+94.19
 $\Delta = 3^\circ 23' 01''$ (LT)
 $D = 0^\circ 29' 54''$
 $R = 11,500.00'$
 $T = 339.67'$
 $L = 679.14'$
 $E = 5.02'$
 P.C. STA. = 110+54.52
 P.T. STA. = 117+33.66

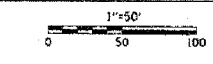
STEEL PLATE BEAM GUARDRAIL, TYPE A	TERMINAL MARKER, DIRECT APPLIED	R.O.W. MARKER	STEEL TRAFFIC BARRIER TERMINAL, TYPE E
LOCATION	LOCATION	LOCATION	LOCATION
108+64.00 RT TO 119+90.47 RT	108+64.00 RT	117+00.00, 85' LT	119+90.47 RT TO 120+20.47 RT
110+29.00 LT TO 120+05.21 LT	110+29.00 LT	116+00.00, 95' LT	120+05.21 LT TO 120+35.21 LT
123+66.84 RT TO 126+00.00 RT	123+66.84 RT	120+39.96, 85' LT	123+36.84 RT TO 123+66.84 RT
TOTAL THIS SHEET	TOTAL THIS SHEET	TOTAL THIS SHEET	TOTAL THIS SHEET
2337	2	5	3

STEEL TRAFFIC BARRIER TERMINAL, TYPE E SPECIAL FLARED
LOCATION
108+14.00 RT TO 108+64.00 RT
109+78.00 LT TO 110+29.00 LT
TOTAL THIS SHEET
2

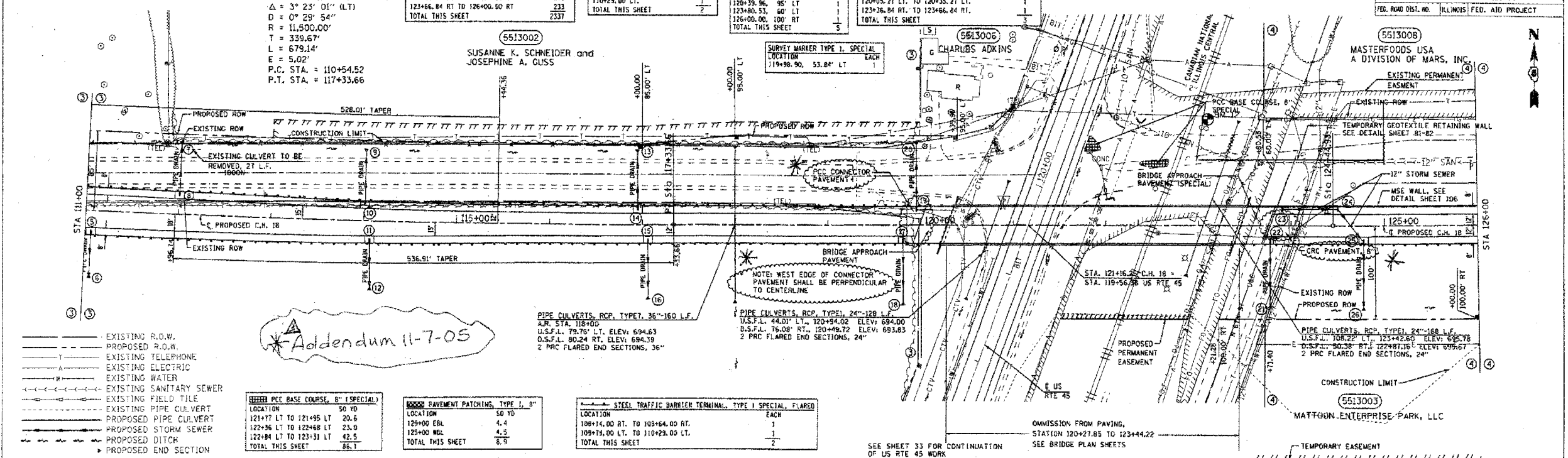
STEEL TRAFFIC BARRIER TERMINAL, TYPE I SPECIAL FLARED
LOCATION
108+14.00 RT TO 108+64.00 RT
109+78.00 LT TO 110+29.00 LT
TOTAL THIS SHEET
2

STEEL TRAFFIC BARRIER TERMINAL, TYPE I SPECIAL FLARED
LOCATION
108+14.00 RT TO 108+64.00 RT
109+78.00 LT TO 110+29.00 LT
TOTAL THIS SHEET
2

SEE SHEET 34 FOR CONTINUATION OF US RTE 45 WORK



CONTRACT - 91292			
F.A.S. DIST.	SECTION	COUNTY	TOTAL SHEET NO.
6-42	99-00124-01-PV	COLES	157
STA. 111+00	TO STA. 126+00		
ILLINOIS FED. AID PROJECT			

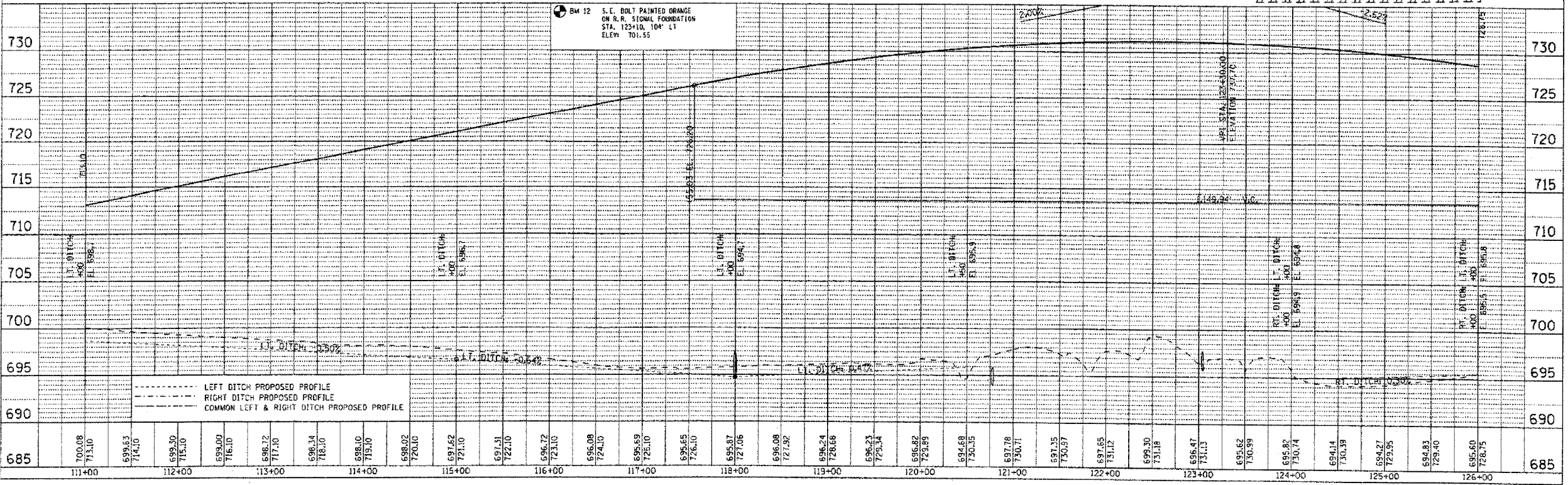


- EXISTING R.O.W.
- - - PROPOSED R.O.W.
- - - EXISTING TELEPHONE
- - - EXISTING ELECTRIC
- - - EXISTING WATER
- - - EXISTING SANITARY SEWER
- - - EXISTING FIELD TILE
- - - EXISTING PIPE CULVERT
- - - PROPOSED PIPE CULVERT
- - - PROPOSED STORM SEWER
- - - PROPOSED DITCH
- - - PROPOSED END SECTION

STEEL TRAFFIC BARRIER TERMINAL, TYPE I, B"
LOCATION
121+77 LT TO 121+95 LT
122+36 LT TO 122+68 LT
122+84 LT TO 123+31 LT
TOTAL THIS SHEET
56.7

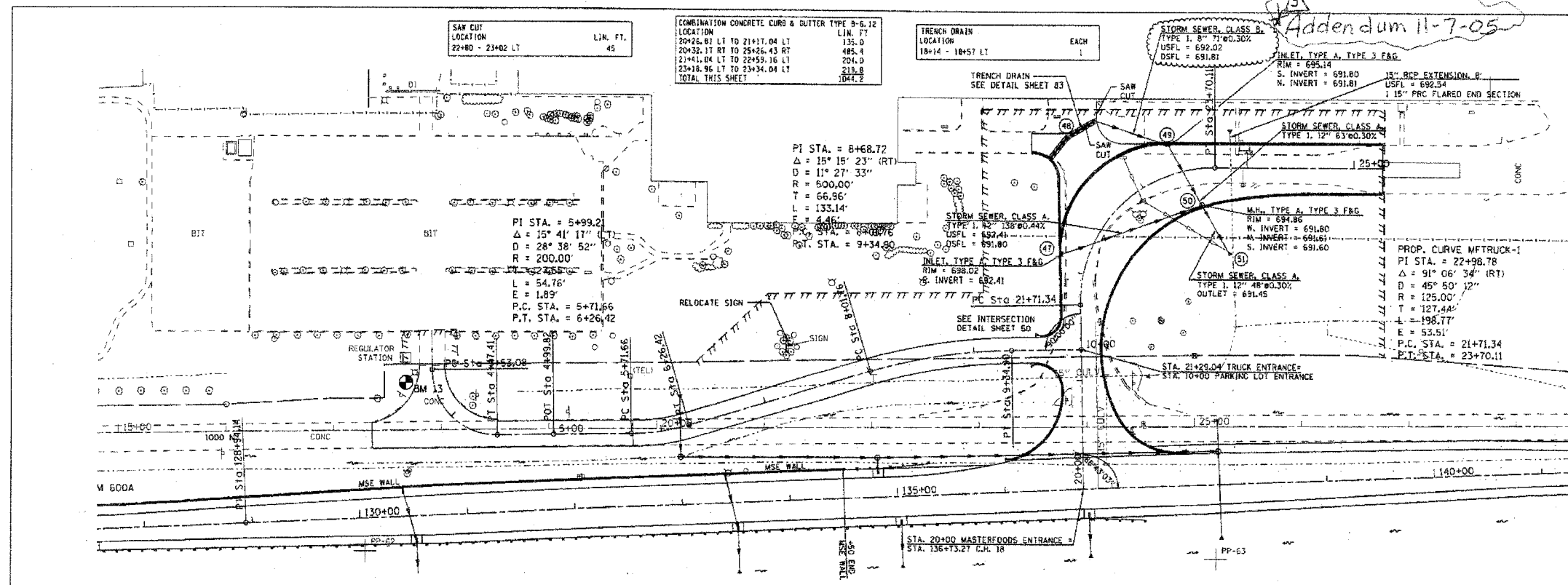
ASPH. PAVEMENT PATCHING, TYPE I, B"
LOCATION
125+00 EBL
125+00 WBL
TOTAL THIS SHEET
8.9

STEEL TRAFFIC BARRIER TERMINAL, TYPE I SPECIAL FLARED
LOCATION
108+14.00 RT TO 108+64.00 RT
109+78.00 LT TO 110+29.00 LT
TOTAL THIS SHEET
2

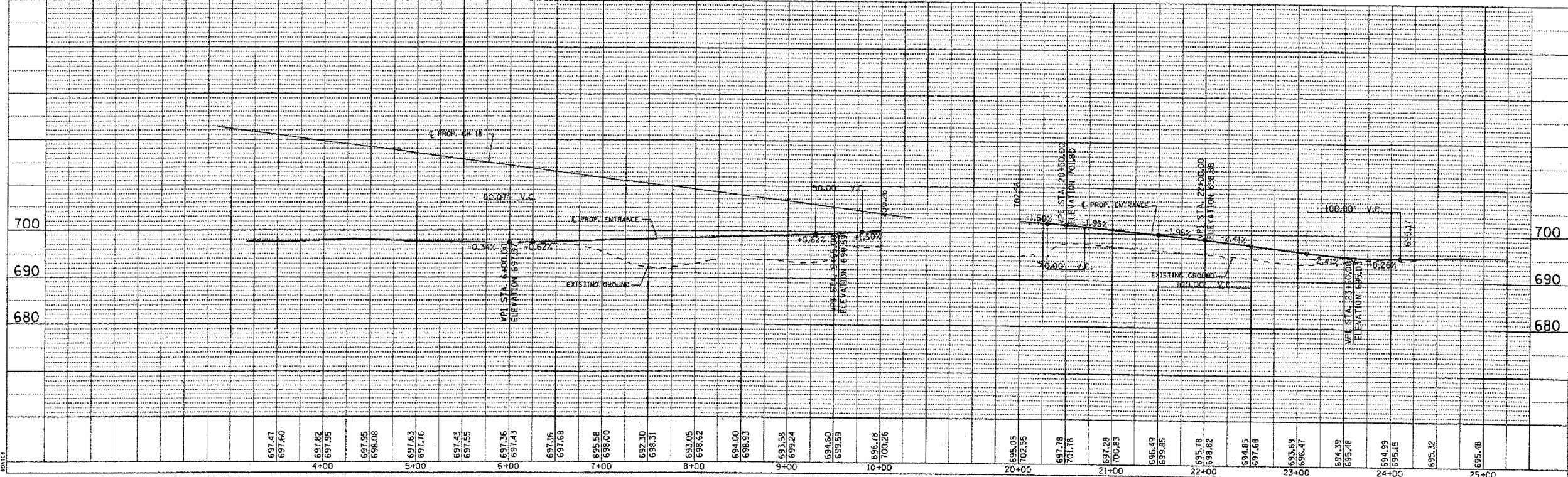


CONTRACT = 91292
 SECTION COUNTY TOTAL SHEET
 642 99-0024-01-PV COLES 157 50
 STA. TO STA.
 FED. ROAD DIST. NO. ILLINOIS FED. AID PROJECT

Addendum 11-7-05



BITUMINOUS PRIME COAT
 LOCATION 130+13.60, LT TO 132+60.06, LT 84.1 GALLONS
 BITUMINOUS SURFACE TACK COAT
 LOCATION 130+13.60, LT TO 132+60.06, LT 70.6 GALLONS



F.A.P. RTE.	SECTION	COUNTY	TOTAL SHEETS	SHEET NO.
642	99-00124-01-PV	COLES	157	85
STA.		TO STA.		
FED. ROAD DIST. NO.		ILLINOIS FED. AID PROJECT		

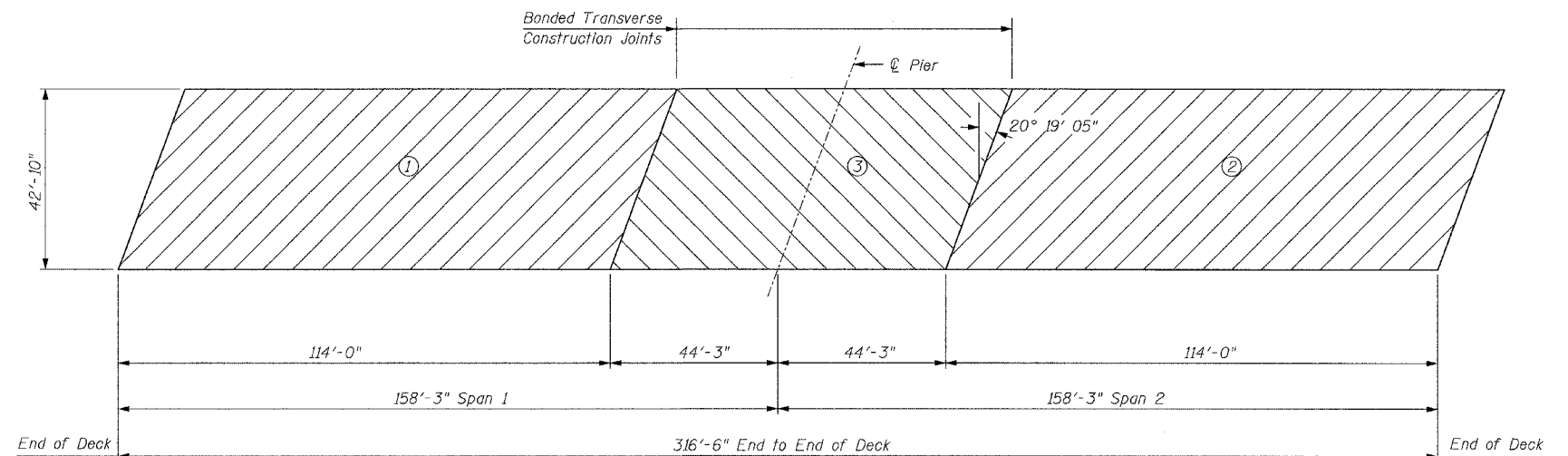
GENERAL NOTES

1. Fasteners shall be high strength bolts. Bolts 7/8" diameter, open holes 15/16" ϕ , unless otherwise noted.
2. Calculated weight of Structural Steel = 455,990 lbs (AASHTO M270, Grade 50).
28,470 lbs (AASHTO M270, Grade 36).
3. Field welding of construction accessories will not be permitted to beams or girders.
4. Anchor bolts shall be set before bolting cross frames over supports.
5. The main load carrying member components subject to tensile stress shall conform to the Supplemental Requirements for Notch Toughness Zone 2. These components are the tension flanges, webs and all splice plate material except fill plates.
6. Reinforcement bars shall conform to the requirements of AASHTO M31 or M322 Grade 60.
7. Slope Wall shall be reinforced with welded wire fabric 6"x6" - W4.0 x W4.0, weighing 58 lbs. per 100 sq. ft.
8. The embankment configuration shown shall be the minimum embankment that must be constructed prior to construction of the abutments.
9. Bearing seat surfaces shall be constructed or adjusted to the designated elevations within a tolerance of 1/8 inch. Adjustment shall be made either by grinding the surface or by shimming the bearing. Two 1/8" adjusting shims, of the dimensions of the bottom bearing plate, shall be provided for each bearing in addition to all other plates or shims.
10. Piles at abutments shall be driven in holes precored through the embankment according to Article 512.10 (c) of the Standard Specifications. Pre-coring of the embankment will be done prior to driving abutment piles even though # piles are not on the list of piles requiring such pre-coring per the Standard Specification Article.
11. The Contractor shall drive 2 Steel HP14x89 test piles in a permanent location, one at the Pier and one at the west abutment, as directed by the Engineer before ordering the remainder of the piles.
12. All construction joints shall be bonded.
13. When the Deck pour is stopped for the day at one or more of the transverse Bonded Construction Joints in the Deck Pouring Sequence as shown, The next pour shall not be made until both of the following requirements are met:
 1. At least 72 hours shall have elapsed from the end of the previous pour.
 2. The concrete strength shall have attained a minimum flexural strength of 650 psi or a minimum compressive strength of 3500 psi
14. The inorganic zinc rich primer/ Acrylic/ Acrylic Paint System shall be used for shop and field painting of new structural steel except where otherwise noted. The color of the final finish coat for all interior steel surfaces shall be light gray, Munsell No. 10Y7/1. The color of the final finish coat for the exterior and bottom flange of the fascia beams shall be Interstate Green Munsell color standard 7.5G 4/8. See special provision for "Cleaning and Painting New Metal Structures."

3 Addendum 11-7-05

TOTAL BILL OF MATERIAL

ITEM	UNIT	SUPER	SUB	TOTAL
Porous Granular Embankment (Special)	Cu. Yd.		362	362
Structure Excavation	Cu. Yd.		618	618
Bridge Deck Grooving	Sq. Yd.	1337		1337
Protective Coat	Sq. Yd.	1672		1672
Concrete Structures	Cu. Yd.		142.4	142.4
Concrete Superstructure	Cu. Yd.	486.8		486.8
Reinforcement Bars, Epoxy Coated	Lb	102270	26640	128910
Floor Drains	Each	8		8
Name Plates	Each		1	1
Furnishing Steel Piles HP 14X89	Ft.		2687	2687
Driving Steel Piles	Ft.		2687	2687
Test Pile Steel HP 14x89	Each	2		2
Furnishing and Erecting Structural Steel	L. Sum	1		1
Stud Shear Connectors	Each	2400		2400
Slope Wall 4 inch	Sq. Yd.		825	825
Bar Splicers	Each	80		80



DECK POURING SEQUENCE

The Concrete Deck Segments shall be poured in the numerical order shown above
Pour ① and ② shall be completed on the same day

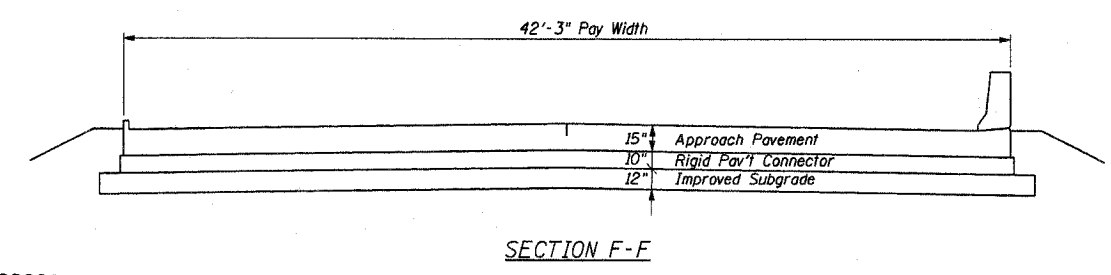
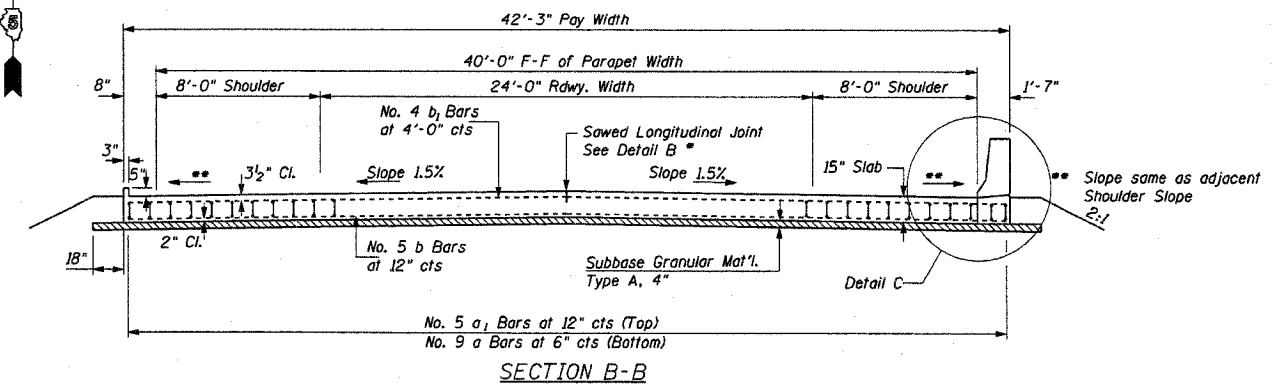
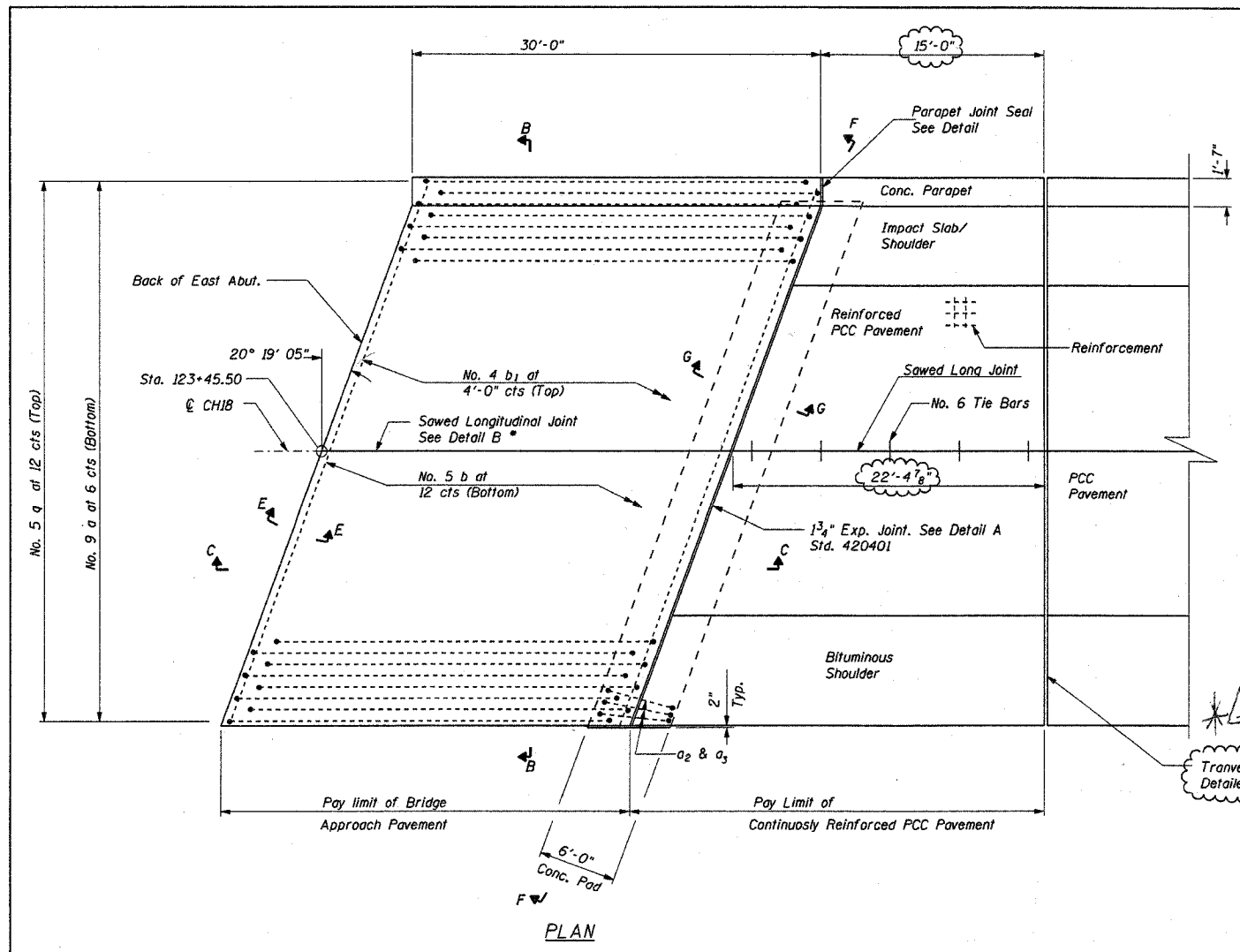
THE UPCHURCH GROUP

HILLSIDE, IL. (708) 449-2321
MATTYON, IL. (217) 235-3177

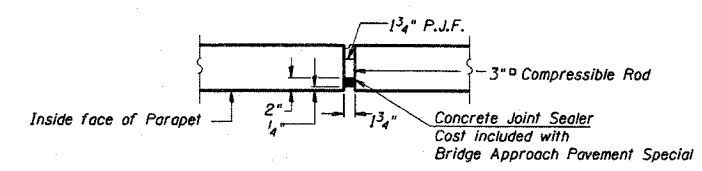
REVISIONS	
NAME	DATE

ILLINOIS DEPARTMENT OF TRANSPORTATION
GENERAL NOTES, BILL OF MATERIAL
CH 18 OVER US 45 AND CN/IC RR
FAS 642 SECTION 99-00124-01-PV
COLES COUNTY
STA. 121+87.25 STR. No. 015-3400
SCALE: DRAWN BY LMP
DATE: 6/21/05 CHECKED BY MJS

F.A.P. RTE.	SECTION	COUNTY	TOTAL SHEETS	SHEET NO.
642	99-00124-01-PV	COLES	157	105
STA.		TO STA.		
FED. ROAD DIST. NO.		ILLINOIS FED. AID PROJECT		



Transverse Contraction Joint as Detailed on Standard 4200001
 * Saw & or Lane Edge if poured two or more lane widths at a time

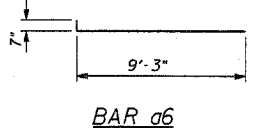
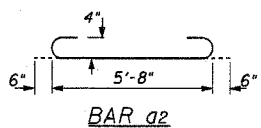
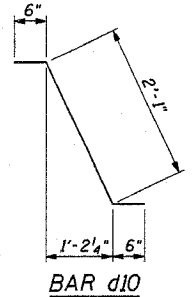
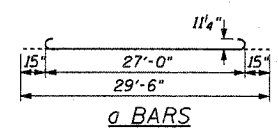
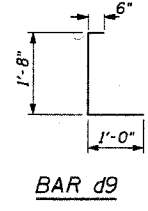
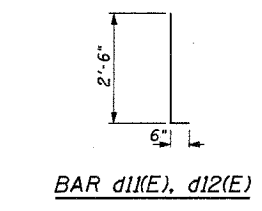
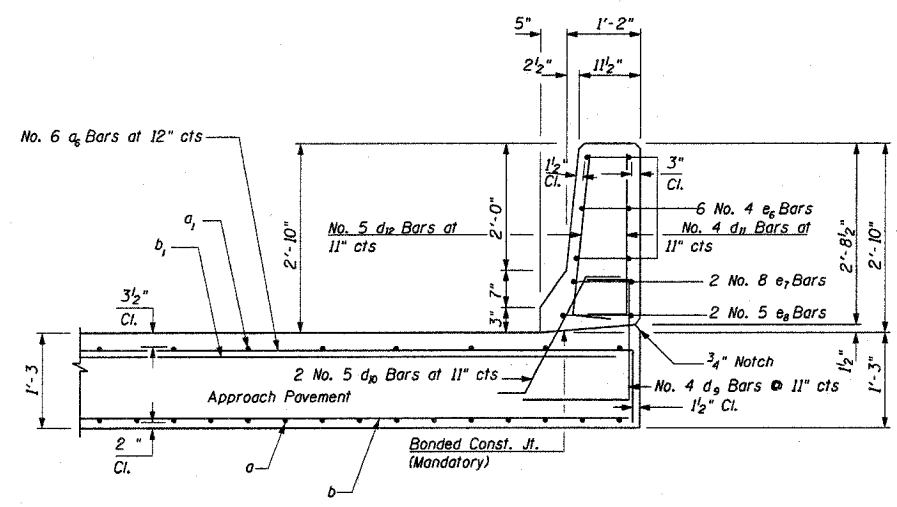


PARAPET JOINT SEAL
 (Cost of Joint Seal included with Concrete Superstructure)

BILL OF MATERIAL

Item	Unit	Qty
Bridge Approach Pavement Special	S.Y.	141

- Notes:**
- 1 Bridge Approach Pavement Special shall be constructed to the dimensions shown on this drawing.
 - 2 See "Bridge Approach Pavement" Std. 420401-01 for Section C-C, Section G-G-Rigid Pavement, Section E-E, Detail A, and Detail B.
 - 3 All Reinforcement bars shall be epoxy coated.
 - 4 See Std. 421001 for reinforcement details not shown.
 - 5 See Std 420001 for details of Joints not shown.
 - 6 All Parapet Corners chamfered 3/4"x3/4"



DESIGN STRESSES

f'c = 3500 psi
 fy = 60000 psi
 n = 8.5

THE UPCHURCH GROUP
 HILLSIDE, IL. (708) 449-2321
 MATTOON, IL. (217) 235-3177

DETAIL C

* Addendum 11-7-05

REVISIONS	
NAME	DATE

ILLINOIS DEPARTMENT OF TRANSPORTATION
 BRIDGE APPROACH PAVEMENT SPECIAL
 CH 18 OVER US 45 AND CN/IC RR
 FAS 642 SECTION 99-00124-01-PV
 COLES COUNTY
 STA. 121+87.25 STR. No. 015-3400
 SCALE: DATE: 1-21-2004
 DRAWN BY LMP
 CHECKED BY MJS