

NOTE: SEE RIGHT OF WAY PLAN SHEETS FOR RIGHT OF WAY AND EASEMENT INFORMATION

PROP. CURVE CURV2  
 PI STA. = 113+94.19  
 $\Delta = 3^\circ 23' 01''$  (LT)  
 $D = 0^\circ 29' 54''$   
 $R = 11,500.00'$   
 $T = 339.67'$   
 $L = 679.14'$   
 $E = 5.02'$   
 P.C. STA. = 110+54.52  
 P.T. STA. = 117+33.66

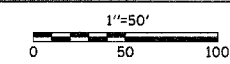
STEEL PLATE BEAM GUARDRAIL, TYPE A	
LOCATION	LN. FT.
108+64.00 RT TO 119+90.47 RT	1128
110+29.00 LT TO 120+05.27 LT	976
123+66.84 RT TO 126+00.00 RT	233
TOTAL THIS SHEET	2337

TERMINAL MARKER, DIRECT APPLIED	
LOCATION	EACH
108+64.00 RT.	1
110+29.00 LT.	1
TOTAL THIS SHEET	2

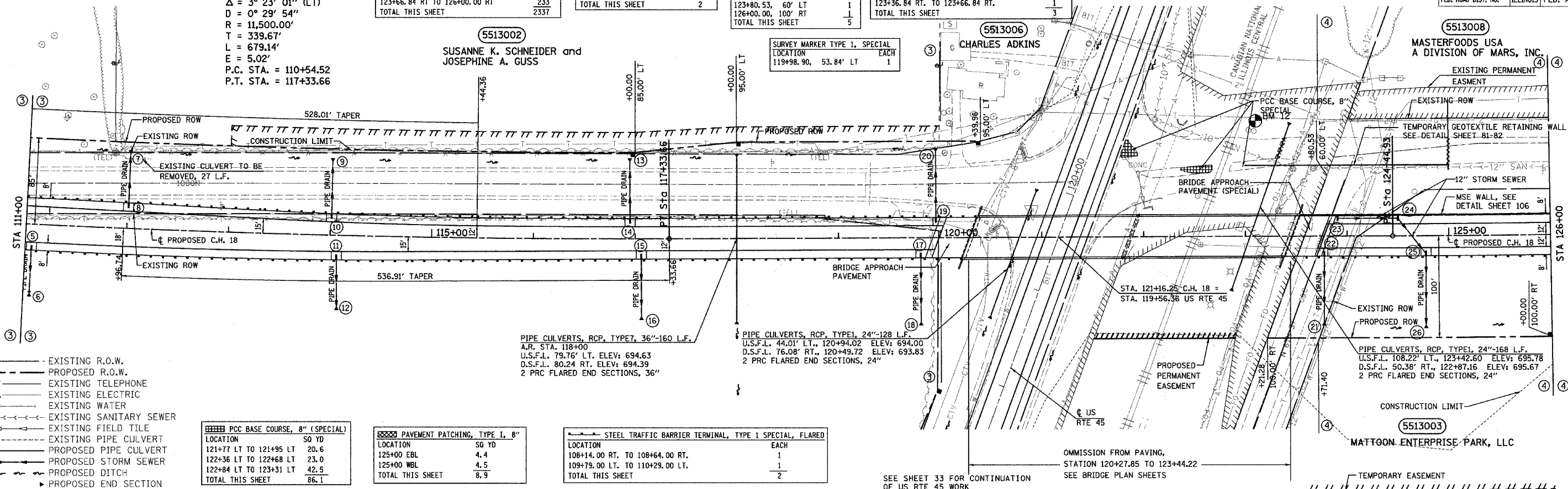
R.O.W. MARKER	
LOCATION	EACH
117+00.00, 85' LT	1
118+00.00, 95' LT	1
120+39.96, 95' LT	1
123+80.53, 60' LT	1
126+00.00, 100' RT	1
TOTAL THIS SHEET	5

STEEL TRAFFIC BARRIER TERMINAL, TYPE 6	
LOCATION	EACH
119+90.47 RT. TO 120+20.47 RT.	1
120+05.27 LT. TO 120+35.27 LT.	1
123+36.84 RT. TO 123+66.84 RT.	1
TOTAL THIS SHEET	3

SEE SHEET 34 FOR CONTINUATION OF US RTE 45 WORK



F.A.S. RTE.	SECTION	COUNTY	TOTAL SHEETS	SHEET NO.
642	99-00124-01-PV	COLES	157	26
STA. 111+00	TO STA. 126+00			
FED. ROAD DIST. NO.	ILLINOIS	FED. AID PROJECT		



- EXISTING R.O.W.
- - - PROPOSED R.O.W.
- T EXISTING TELEPHONE
- A EXISTING ELECTRIC
- W EXISTING WATER
- — — EXISTING SANITARY SEWER
- — — EXISTING FIELD TILE
- — — EXISTING PIPE CULVERT
- — — PROPOSED PIPE CULVERT
- — — PROPOSED STORM SEWER
- — — PROPOSED DITCH
- ▶ PROPOSED END SECTION

PCC BASE COURSE, 8" (SPECIAL)	
LOCATION	SQ YD
121+77 LT TO 121+95 LT	20.6
122+36 LT TO 122+68 LT	23.0
122+84 LT TO 123+31 LT	42.5
TOTAL THIS SHEET	86.1

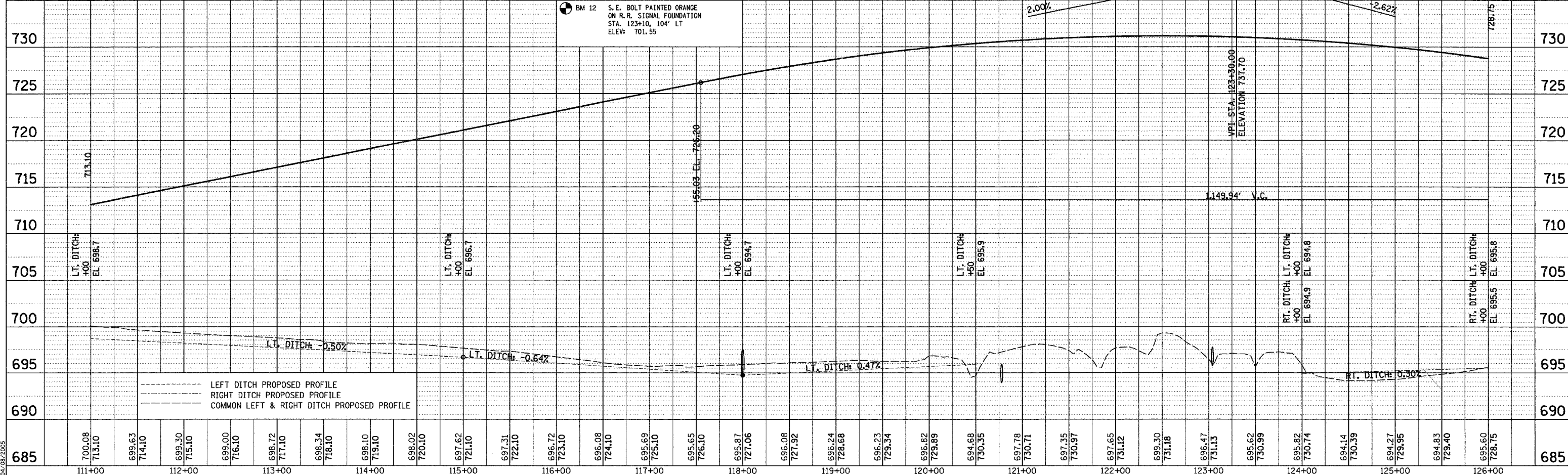
PAVEMENT PATCHING, TYPE I, 8"	
LOCATION	SQ YD
125+00 EBL	4.4
125+00 WBL	4.5
TOTAL THIS SHEET	8.9

STEEL TRAFFIC BARRIER TERMINAL, TYPE 1 SPECIAL, FLARED	
LOCATION	EACH
108+14.00 RT. TO 108+64.00 RT.	1
109+79.00 LT. TO 110+29.00 LT.	1
TOTAL THIS SHEET	2

PIPE CULVERTS, RCP, TYPE2, 36"-160 L.F.  
 A.R. STA. 118+00  
 U.S.F.L. 79.76' LT. ELEV: 694.63  
 D.S.F.L. 80.24 RT. ELEV: 694.39  
 2 PRC FLARED END SECTIONS, 36"

PIPE CULVERTS, RCP, TYPE1, 24"-128 L.F.  
 U.S.F.L. 44.01' LT., 120+94.02 ELEV: 694.00  
 D.S.F.L. 76.08' RT., 120+49.72 ELEV: 693.83  
 2 PRC FLARED END SECTIONS, 24"

PIPE CULVERTS, RCP, TYPE1, 24"-168 L.F.  
 U.S.F.L. 108.22' LT., 123+42.60 ELEV: 695.78  
 D.S.F.L. 50.38' RT., 122+87.16 ELEV: 695.67  
 2 PRC FLARED END SECTIONS, 24"



--- LEFT DITCH PROPOSED PROFILE  
 --- RIGHT DITCH PROPOSED PROFILE  
 --- COMMON LEFT & RIGHT DITCH PROPOSED PROFILE

DRAWN BY: S.F.  
 CHECKED BY: MED  
 TITLE: PROJ. #397022-5  
 SHEET: P1-R-W.dgn  
 DATE: 08/20/05