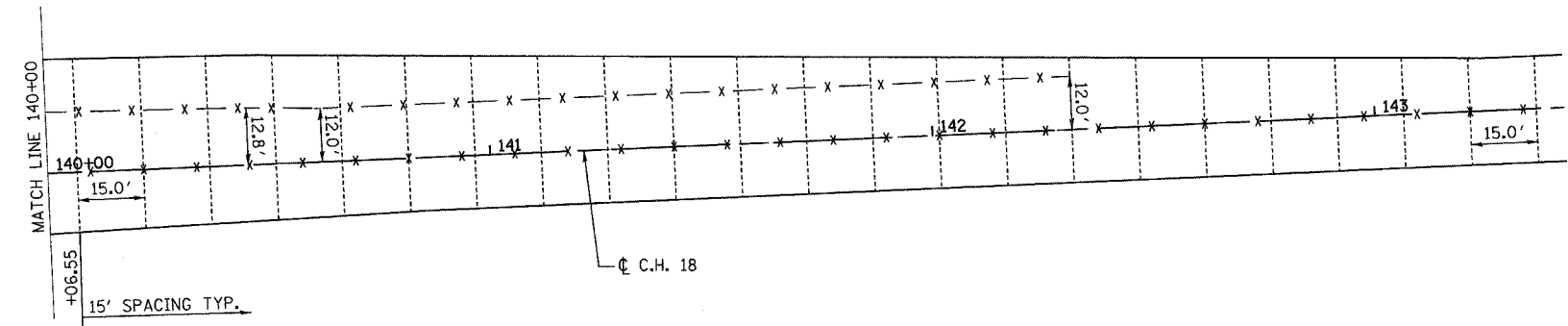
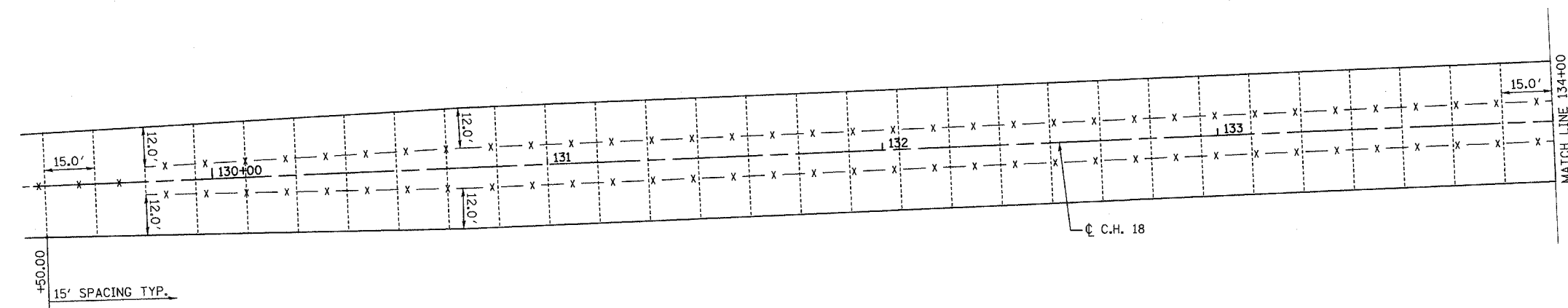


F.A.S. RTE.	SECTION	COUNTY	TOTAL SHEETS	SHEET NO.
642	99-00124-01-PV	COLES	157	53
STA.		TO STA.		
FED. ROAD DIST. NO.		ILLINOIS	FED. AID PROJECT	



LEGEND

- KEYED CONSTRUCTION JOINT
- SAWED LONGITUDINAL JOINT OR LONGITUDINAL CONSTRUCTION JOINT
- TRANSVERSE SAWED CONTRACTION JOINT

REVISIONS	
NAME	DATE

ILLINOIS DEPARTMENT OF TRANSPORTATION
PAVEMENT JOINTING PLAN
C.H. 18 & MASTERFOODS ENTRANCE

SCALE: VERT. DRAWN BY RLH
 HORIZ. 1"=20'
 DATE 04/08/2005 CHECKED BY MED

TUG PROJ # 04/08/2005-5
 SHEET 01 of 11
 04/08/2005