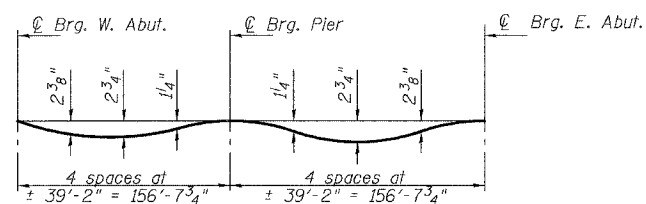


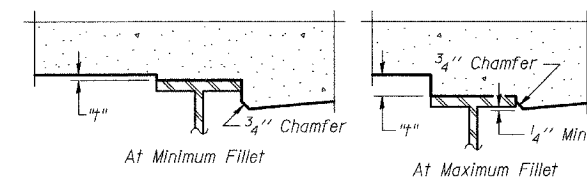
F.A.P. RTE.	SECTION	COUNTY	TOTAL SHEETS	SHEET NO.
642	99-00124-01-PV	COLES	157	87
STA.		TO STA.		
FED. ROAD DIST. NO.	ILLINOIS	FED. AID PROJECT		



DEAD LOAD DEFLECTION DIAGRAM

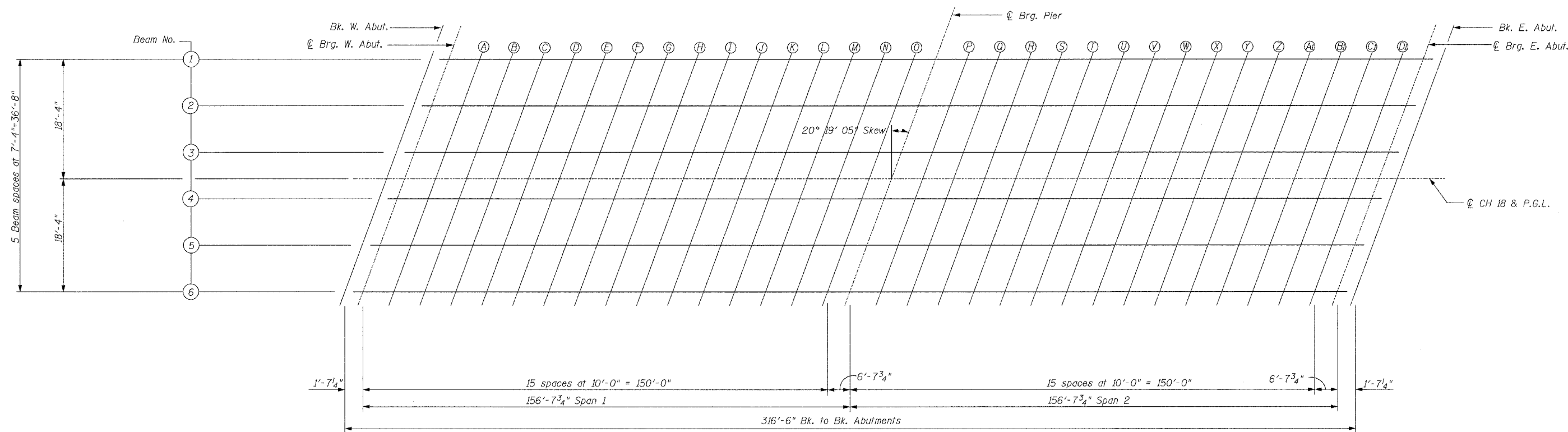
(Includes weight of concrete only.)

Note: The above deflections are not to be used in the field if the engineer is working from the grade elevations adjusted for dead load deflections as shown on Sheets 5 and 6.



To determine "t": After all structural steel has been erected, elevations of the top flanges of the beams shall be taken at intervals shown below. These elevations subtracted from the "Theoretical Grade Elevations Adjusted for Dead Load Deflection" shown on Sheets 5 and 6, minus slab thickness, equals the fillet heights "t" above top flange of beams.

FILLET HEIGHTS



PLAN



Note: Work this Sheet with Sheets 5 and 6 of 21.

THE UPCHURCH GROUP

HILLSIDE, IL. (708) 449-2321
MATTOON, IL. (217) 235-8177

E-S 4-30-97

REVISIONS	
NAME	DATE

ILLINOIS DEPARTMENT OF TRANSPORTATION
TOP OF SLAB ELEVATIONS
CH 18 OVER US 45 AND CN/IC RR
FAS 642 SECTION 99-00124-01-PV
COLES COUNTY
STA. 121+87.25 STR. No. 015-3400
SCALE: N.T.S. DRAWN BY B.J.F.
DATE: 01-21-2004 CHECKED BY M.J.S.