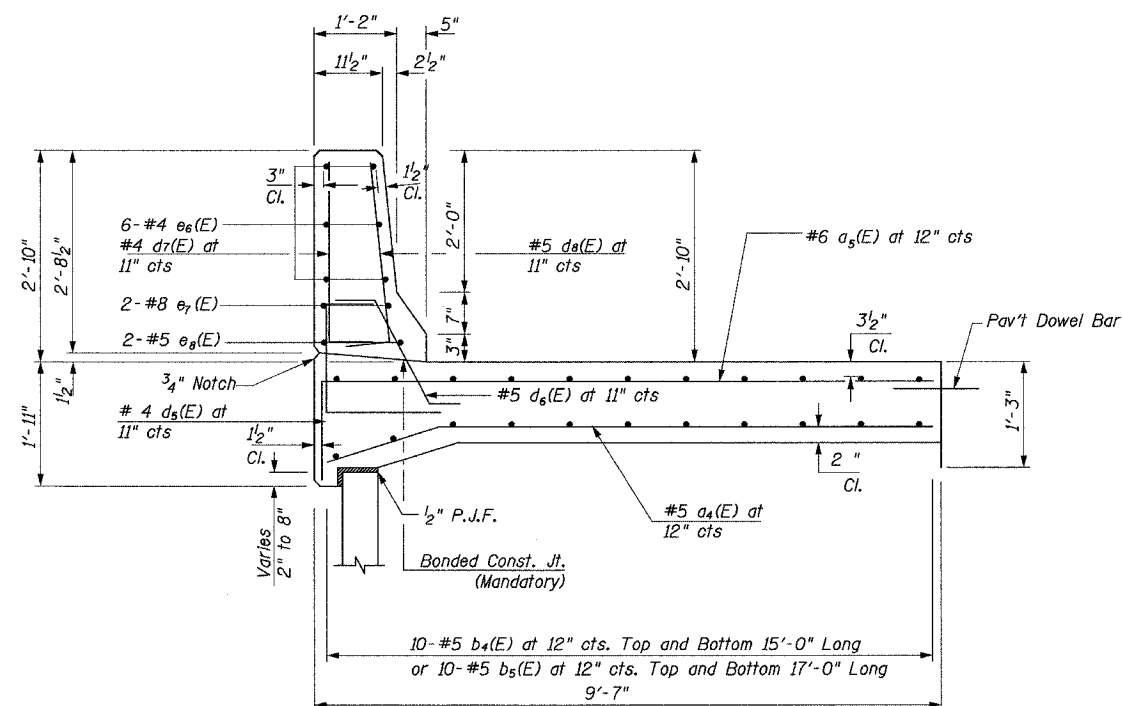


F.A.P. RTE.	SECTION	COUNTY	TOTAL SHEETS	SHEET NO.
642	99-00124-01-PV	COLES	157	108
STA.		TO STA.		
FED. ROAD DIST. NO.	ILLINOIS	FED. AID PROJECT		



**TYPICAL SECTION A-A**

(Longitudinal Construction Joints in Parapet Impact Slab at 15'-0" centers. See note 1)

(70 Slabs 15'-0" Long Required  
1 Slab 17'-0" Long Required)

**BILL OF MATERIAL**

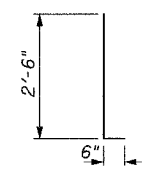
Bar	No.	Size	Length (ft)	Shape
a4(E)	1068	#5	9'-3"	—
a5(E)	1068	#6	10'-8"	—
b4(E)	1400	#5	14'-8"	—
b5(E)	20	#5	16'-8"	—
d4(E)	1165	#4	3'-2"	┌
d5(E)	1165	#5	3'-1"	└
d7(E)	1165	#4	3'-0"	—
d8(E)	1165	#5	3'-0"	—
e6(E)	216	#4	29'-8"	—
e7(E)	72	#8	29'-8"	—
e8(E)	72	#5	29'-8"	—
Item		Unit	Qty.	
Reinforcement Bars, Epoxy Coated		lb	73580	
Concrete Structures		Cu. Yd.	624.6	

**MIN. BAR LAP PARAPET**

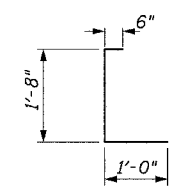
- #4 bars = 1'-4"
- #5 bars = 1'-8"
- #8 bars = 3'-5"

**Notes:**

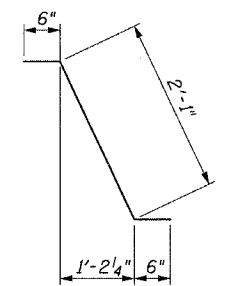
- Provide Bulkhead Longitudinal Construction Joint in Parapet Impact Slab as detailed on Standard 420001 at 15'-0" centers.
- Construction Joints in Parapet shall either be at the same location as the Joints in the Parapet Impact Slab or the Parapet Wall may be continuously slip formed.
- Reinforcement bars designated (E) shall be epoxy coated.
- Work this sheet with sheet 1 and 2 of 3



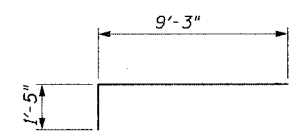
**BAR d7(E), d8(E)**



**BAR d5**



**BAR d6**



**BAR a5**

**THE UPCHURCH GROUP**

HILLSIDE, IL. (708) 449-2321  
MATTOON, IL. (217) 235-3177

REVISIONS	
NAME	DATE

ILLINOIS DEPARTMENT OF TRANSPORTATION  
**REINFORCEMENT DETAILS**  
RETAINING WALL ON CH 18  
FAS 642 SECTION 99-00124-01-PV  
COLES COUNTY STR. No. 015-3412  
STA. 123+53.07 TO STA. 135+50.07

SCALE: DRAWN BY LMP  
DATE: 1-21-2004 CHECKED BY MJS