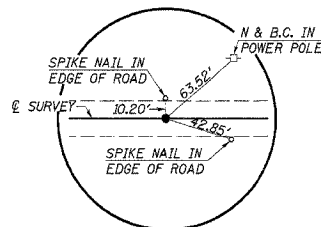


SW 1/4 SEC. 25, T. 16 N., R. 6 E., 3RD P.M.

ROUTE	SECTION	COUNTY	TOTAL SHEETS	SHEET NO.
C.H. 16	04-00209	PIATT	18	3
STA. 26+50.00 TO STA. 33+00.00				
ILLINOIS				

CONTRACT NO. 91339



**P.O.T. STA. 26+50
NAIL & BOTTLE CAP**

CHANNEL EXCAVATION

CHANNEL SILTATION SHALL BE CLEANED OUT AS SHOWN WITHIN LIMITS OF PROPOSED BRIDGE DECK AND TAPERED TO EXISTING CONDITIONS AT R.O.W. LINES

CHANNEL EXCAVATION = 640 CU. YD.

U.S.G.S. GAGING STATION

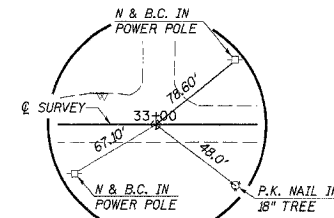
GAGE NO. 05590800
GAGE STATION TO REMAIN IN PLACE AT S.E. WING
PHONE 217-344-0037 FOR INFORMATION

TRAFFIC BARRIER TERMINAL, TYPE 2

RT. STA. 30+52.52 TO RT. STA. 30+65.02 = 1 EACH
TOTAL = 1 EACH

TRAFFIC BARRIER TERMINAL, TYPE 5A

RT. STA. 28+73.35 TO RT. STA. 28+86.60 = 1 EACH
LT. STA. 30+23.41 TO LT. STA. 30+36.66 = 1 EACH
RT. STA. 30+39.27 TO RT. STA. 30+52.52 = 1 EACH
TOTAL = 3 EACH



**P.O.T. STA. 33+00
NAIL & BOTTLE CAP**

GUARDRAIL REMOVAL

LT. STA. 28+31 TO LT. STA. 28+72 = 41 FOOT
RT. STA. 28+45 TO RT. STA. 28+85 = 40 "
LT. STA. 30+24 TO LT. STA. 30+65 = 41 "
RT. STA. 30+39 TO RT. STA. 30+79 = 40 "
TOTAL = 162 FOOT

EXISTING STRUCTURE

S.N. 074-0034, 3-SPAN CONTINUOUS STEEL WIDE-FLANGE BEAM BRIDGE WITH C.I.P. CONCRETE DECK, R.C. HAMMERHEAD PIERS AND CLOSED CONCRETE ABUTMENTS, 152'-1" BK.-BK. ABUTMENTS, 3-SPANS @ 46'-6", 54'-9", 46'-6" c.c. BRGS., 26'-0" ROADWAY, 32'-0" o.o. DECK, SKEW = 25° RT. REMOVAL OF EXISTING CONCRETE DECK = 1 EACH

OVERHEAD POWER

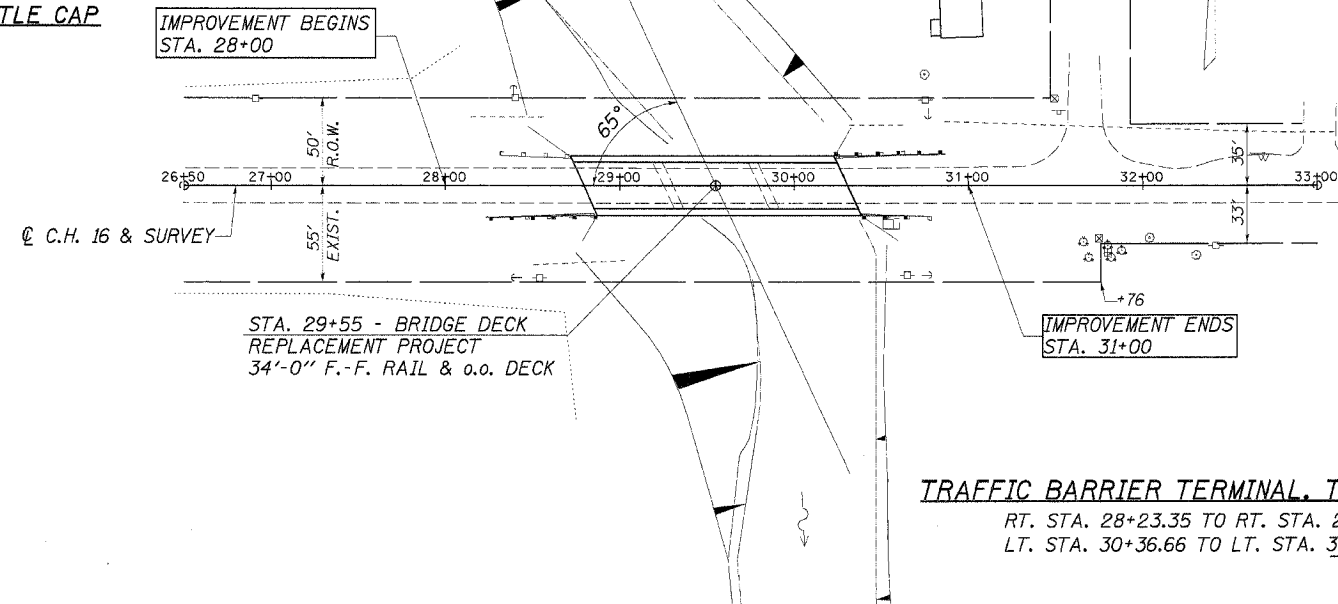
ILLINOIS POWER

BURIED & OVERHEAD CABLE

ILLINOIS CONSOLIDATED TELEPHONE CO.

BURIED GAS LINE

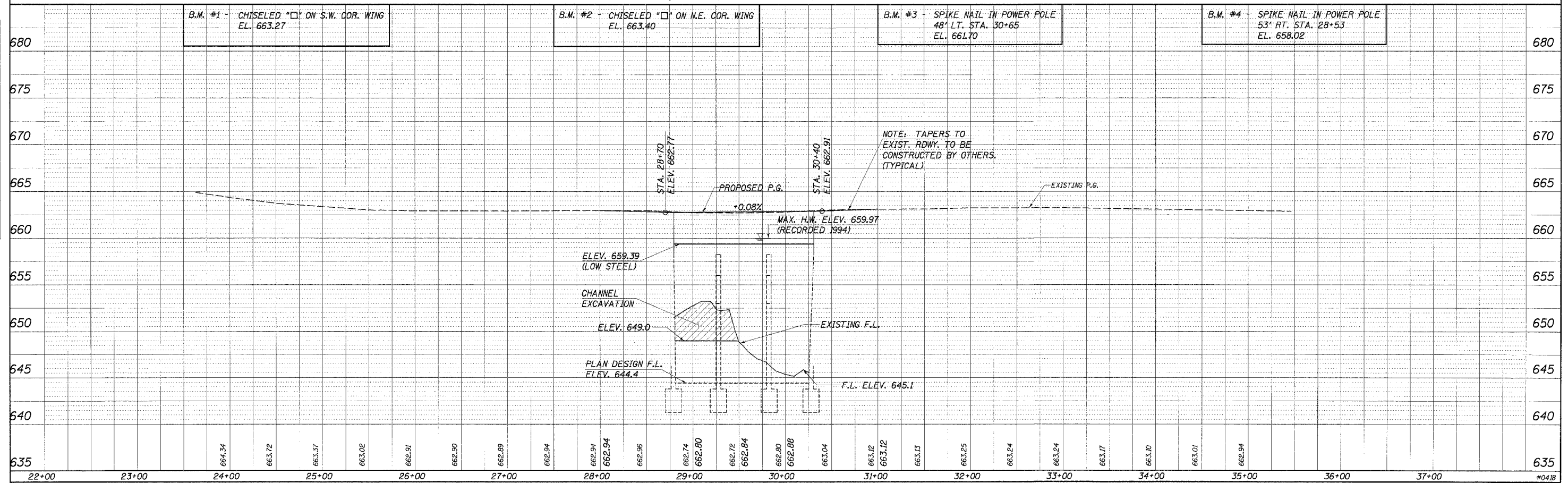
AMEREN CILCO



TRAFFIC BARRIER TERMINAL, TYPE 1, SPECIAL (TANGENT)

RT. STA. 28+23.35 TO RT. STA. 28+73.35 = 1 EACH
LT. STA. 30+36.66 TO LT. STA. 30+86.66 = 1 EACH
TOTAL = 2 EACH

NW 1/4 SEC. 36, T. 16 N., R. 6 E., 3RD P.M.



DATE: _____
BY: _____
CHECKED: _____
DATE: _____

DATE: _____
BY: _____
CHECKED: _____
DATE: _____